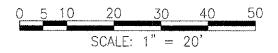
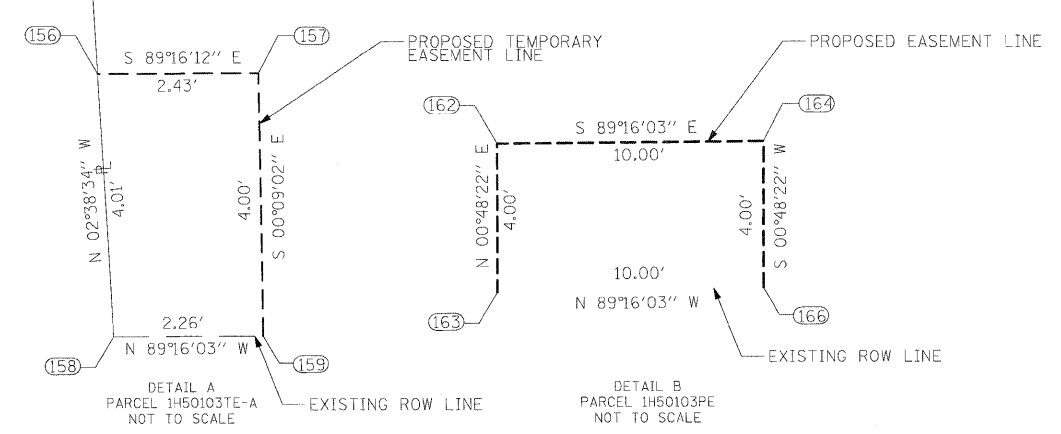
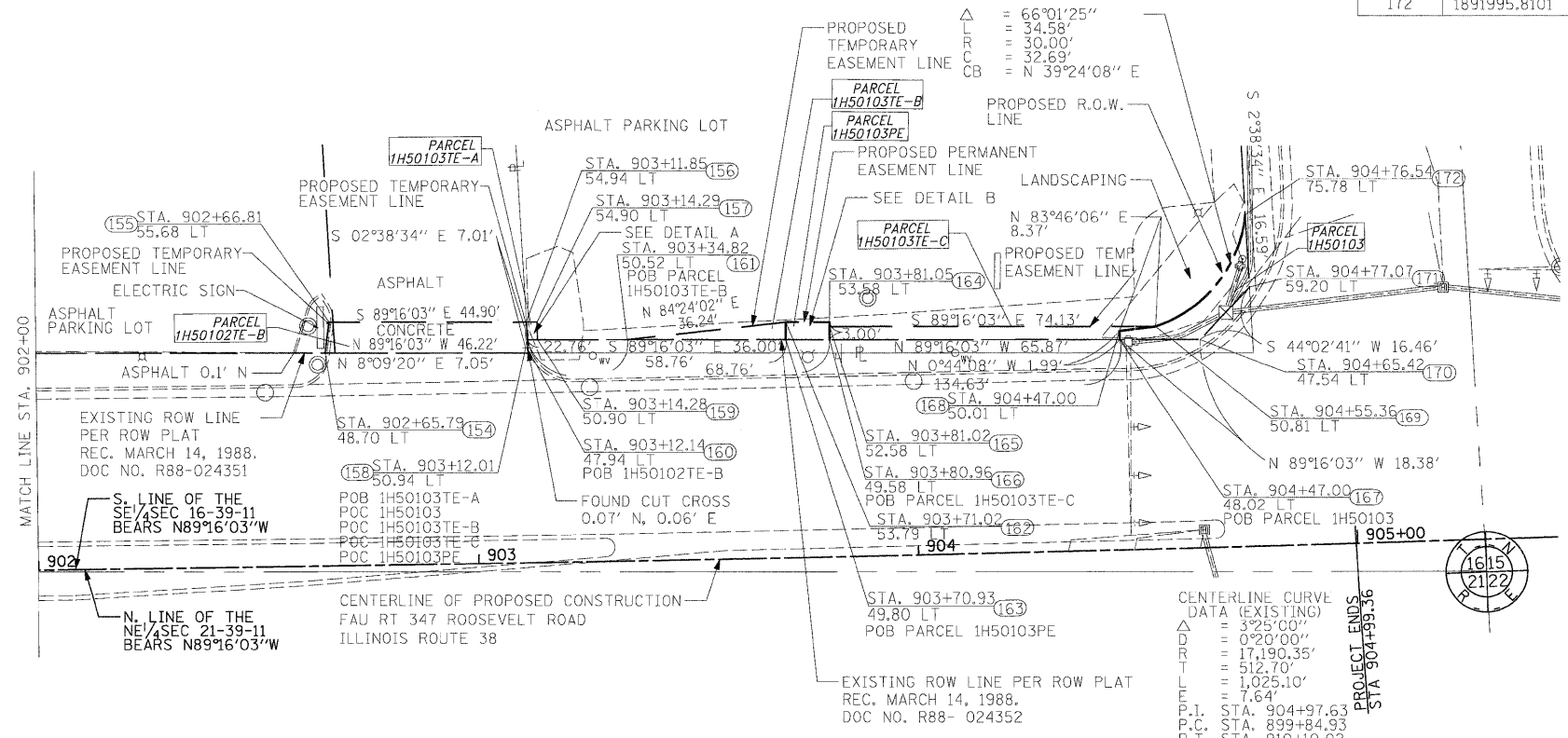


PROJECT COORDINATES ARE SURFACE COORDINATES, AND CAN BE CONVERTED TO STATE PLANE COORDINATES, EAST ZONE, NAD 83 BY MULTIPLYING THE COORDINATES BY 0.99997097.

POINT TABLE		
NUMBER	NORTHING	EASTING
148	1891974.2817	1080543.4853
149	1891970.2820	1080543.6699
150	1891973.9708	1080567.9160
151	1891984.9699	1080568.0520
152	1891984.4631	1080607.5476
153	1891969.4679	1080607.3506
154	1891966.9618	1080803.5940
155	1891973.9442	1080804.5946
156	1891973.3721	1080849.4907
157	1891973.3411	1080851.9245
158	1891969.3702	1080849.6754
159	1891969.3411	1080851.9350
160	1891966.3682	1080849.8140
161	1891969.0782	1080872.4162
162	1891972.6140	1080908.4813
163	1891968.6192	1080908.4251
164	1891972.4911	1080918.4815
165	1891971.4907	1080918.4680
166	1891968.4913	1080918.4278
167	1891967.6495	1080984.2933
168	1891969.6394	1080984.2678
169	1891970.5483	1080992.5921
170	1891967.4145	1081002.6682
171	1891979.2431	1081014.1088
172	1891995.8101	1081013.3439



TOTAL HOLDING DEPICTION
PARCELS 1H50102TE-A, 1H50102TE-B, 1H50103,
1H50103TE-A, 1H50103TE-B, 1H50103TE-C, 1H50103PE



CENTERLINE CURVE DATA (EXISTING)
 Δ = 325.00'
 R = 0.20'00"
 L = 17,190.35'
 T = 512.70'
 E = 1,025.10'
 $P.I.$ = 7.64'
 $P.I.$ STA. 904+97.63
 $P.C.$ STA. 899+84.93
 $P.T.$ STA. 910+10.02

FILE NAME =
D163197-sht-ropplan05.dgn

USER NAME	IDOT	DESIGNED	DA/SC	REVISED	10/24/2011
		DRAWN	BM/CC/BB	REVISED	
		CHECKED	DA	REVISED	
		DATE	06/08/2011	REVISED	

STATE OF ILLINOIS
DEPARTMENT OF TRANSPORTATION

RIGHT OF WAY PLAN
STA 900+00 TO STA 905+00

SCALE: AS SHOWN SHEET NO. 5 OF 8 SHEETS STA. TO STA.

F.A.P. RTE.	SECTION	COUNTY	TOTAL SHEETS	SHEET NO.
347	02-00077-00-SW	DUPAGE	73	32
CONTRACT NO. 63197				
FED. ROAD DIST. NO. ILLINOIS FED. AID PROJECT				