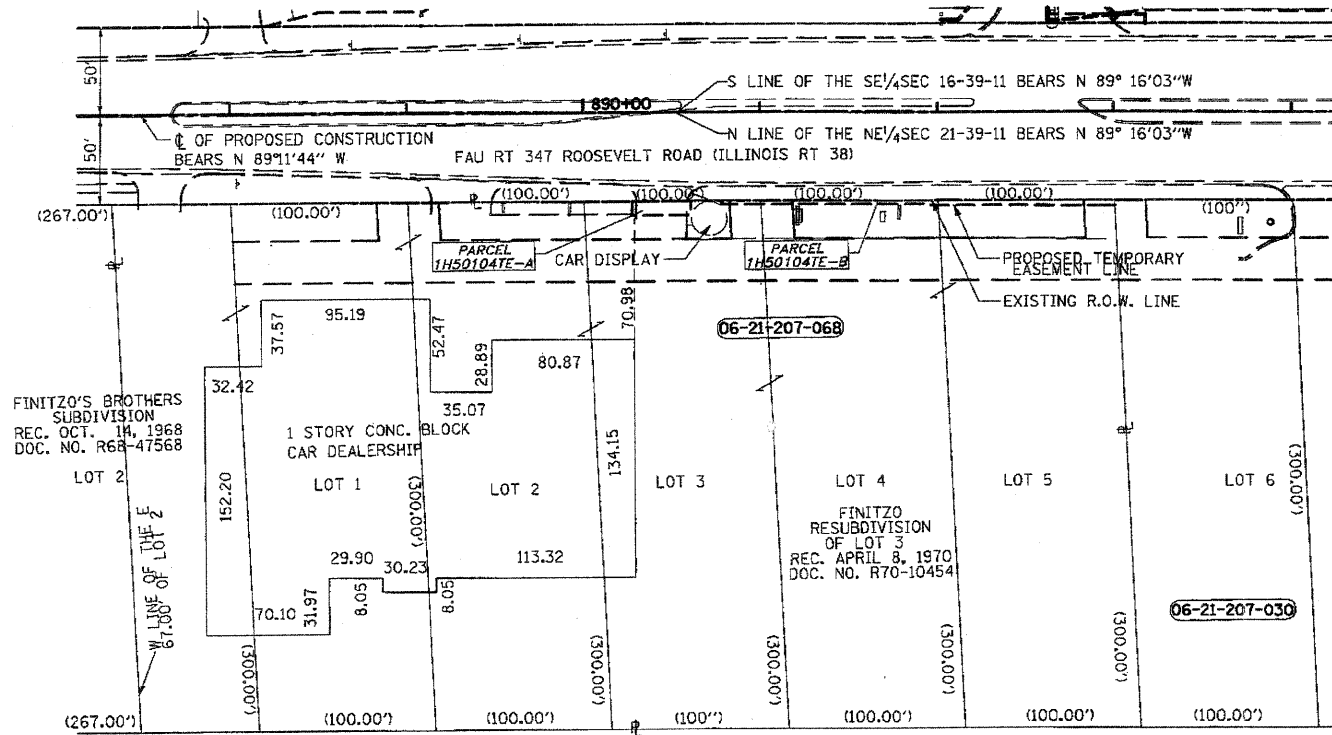


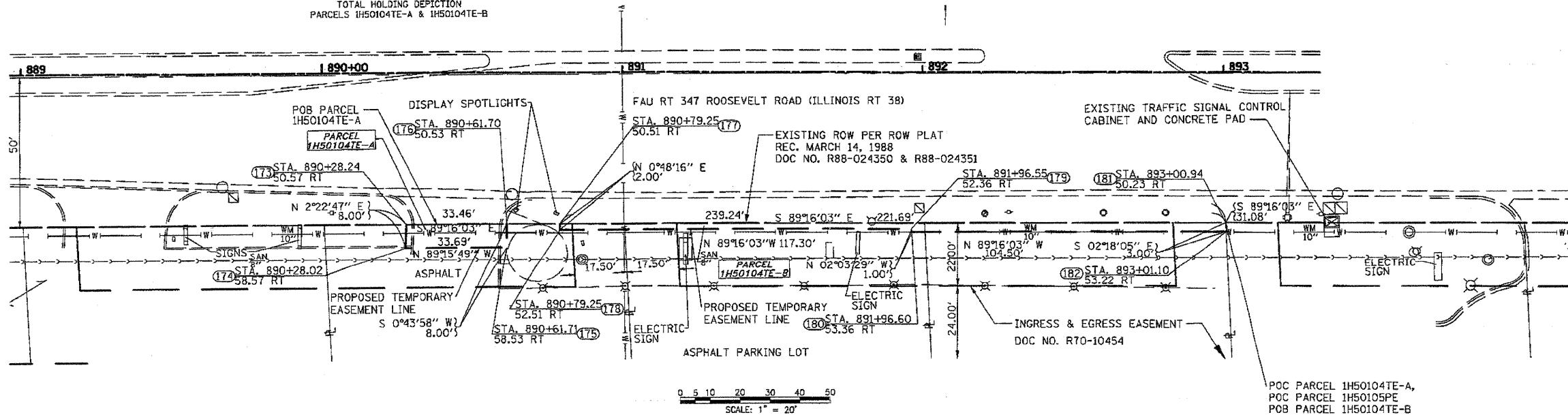


PARCEL NUMBER	OWNER	TOTAL HOLDING ACRES	PART TAKEN ACRES	REMAINDER ACRES	PREV. DEP. ACRES	EASEMENT ACRES	EASEMENT PURPOSE	PERMANENT TAX INDEX NUMBER	PROPERTY ACQUIRED BY
IH50104TE-A	LSALLE NATIONAL BANK (OR ITS SUCCESSOR) AS TRUSTEE UNDER TRUST AGREEMENT DATED MAY 15, 1972 KNOWN AS TRUST NO. 44094	3.902 ACRES				269 SQ. FT. 0.006 ACRES	CONSTRUCTION	06-21-207-068	
IH50104TE-B						0.013 ACRES	CONSTRUCTION		



PROJECT COORDINATES ARE SURFACE COORDINATES, AND CAN BE CONVERTED TO STATE PLANE COORDINATES, EAST ZONE, NAD 83 BY MULTIPLYING THE COORDINATES BY 0.99997097.

POINT TABLE		
NUMBER	NORTHING	EASTING
173	1891882.7781	1079565.5481
174	1891874.7820	1079565.2158
175	1891874.3489	1079598.9031
176	1891882.3504	1079599.0054
177	1891882.1260	1079616.5540
178	1891880.1221	1079616.5259
179	1891878.6251	1079733.8164
180	1891877.6245	1079733.8524
181	1891879.2922	1079838.2222
182	1891876.2932	1079838.3427



POC PARCEL IH50104TE-A,
POC PARCEL IH50105PE
POB PARCEL IH50104TE-B

FILE NAME = D:\S\97-shr-traveler\88.dgn	USER NAME IDDT	DESIGNED DA/SC	REVISIONS	10/24/2011	STATE OF ILLINOIS DEPARTMENT OF TRANSPORTATION	RIGHT OF WAY PLAN STA 887+20 TO STA 894+10		F.A.P. RTE.	SECTION	COUNTY	TOTAL SHEETS	SHEET NO.
		DRAWN BM/CC/BB	REVISIONS			347	02-00077-00-SW	DUPAGE	73	33		
		CHECKED DA	REVISIONS			SCALE: AS SHOWN SHEET NO. 6 OF 8 SHEETS STA. TO STA.						
		DATE 06/08/2011	REVISIONS			CONTRACT NO. 63197						
							FED. ROAD DIST. NO.		ILLINOIS FED. AID PROJECT			