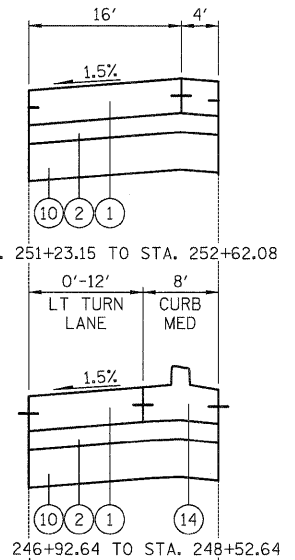
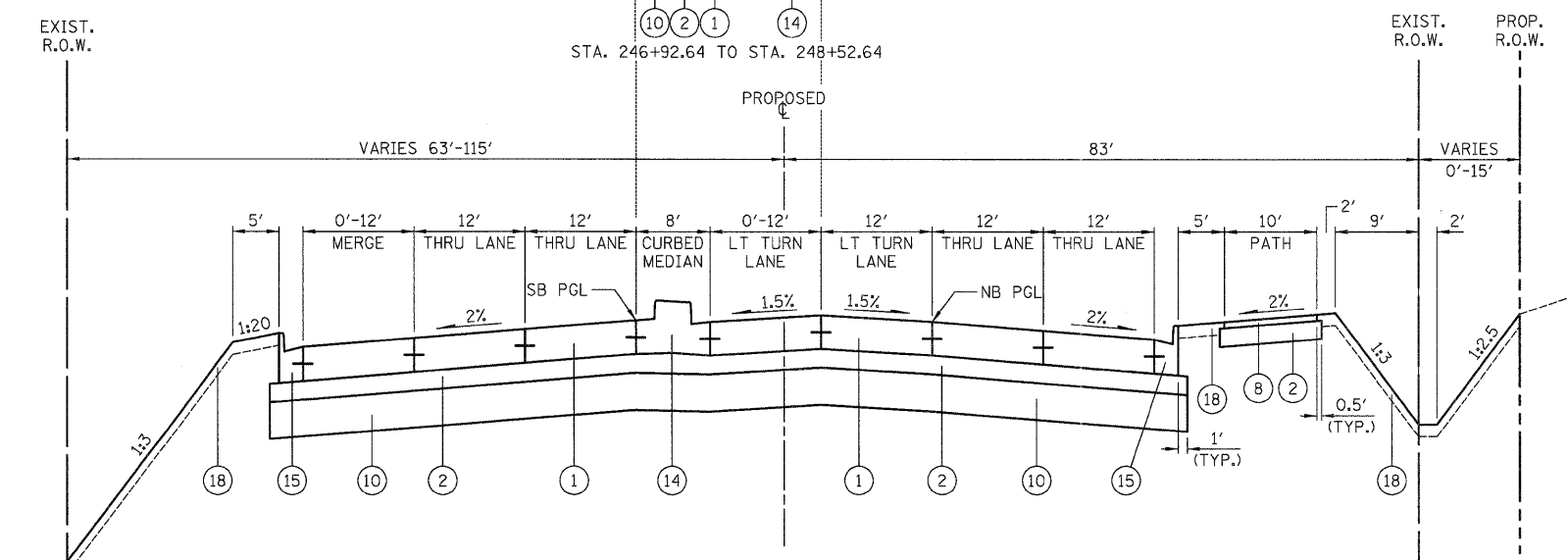


ILLINOIS ROUTE 31  
STA. 243+81.39 TO STA. 246+92.64



ILLINOIS ROUTE 31  
STA. 251+23.15 TO STA. 252+62.08



ILLINOIS ROUTE 31  
STA. 246+92.64 TO STA. 252+62.08

PROPOSED LEGEND

- ① PORTLAND CEMENT CONCRETE PAVEMENT, 10" (JOINTED)
- ② SUB-BASE GRANULAR MATERIAL, TYPE B, 6"
- ③ POLYMERIZED HOT-MIX ASPHALT SURFACE COURSE, MIX "F", N90 (IL 9.5mm), 1 3/4"
- ④ POLYMERIZED HOT-MIX ASPHALT BINDER COURSE, IL-19.0, N90, 12 1/4"
- ⑤ HOT-MIX ASPHALT SURFACE COURSE, MIX "D", N70, 2"
- ⑥ HOT-MIX ASPHALT BINDER COURSE, IL-19.0, N70, 2"
- ⑦ HOT-MIX ASPHALT BINDER COURSE, IL-19.0, N50, 11 1/2"
- ⑧ HOT-MIX ASPHALT SURFACE COURSE, MIX "D", N50, 2"
- ⑨ HOT-MIX ASPHALT BINDER COURSE, IL-19.0, N50, 4"
- ⑩ AGGREGATE SUBGRADE, 12"
- ⑪ POROUS GRANULAR EMBANKMENT, SUBGRADE, VARIABLE DEPTH - SEE TABLE ON SHEET NO. 12
- ⑫ NUMBER NOT USED
- ⑬ CONCRETE MEDIAN, TYPE SB-6.12
- ⑭ CONCRETE MEDIAN, TYPE SB-6.24
- ⑮ COMBINATION CONCRETE CURB AND GUTTER, B-6.24
- ⑯ HOT-MIX ASPHALT SHOULDERS, 6"
- ⑰ AGGREGATE SHOULDERS, TYPE B 6"
- ⑱ TOPSOIL FURNISH AND PLACE, 4" SEEDING, FERTILIZER, AND EROSION MAT

FILE NAME =	USER NAME = dte	DESIGNED - KWH	REVISED -	<b>STATE OF ILLINOIS DEPARTMENT OF TRANSPORTATION</b>	<b>PROPOSED TYPICAL SECTIONS</b>			F.A.U. RTE.	SECTION	COUNTY	TOTAL SHEETS	SHEET NO.
Y:\2278 Virginia Klassen\ced\sheet\03-Typ	cale\2278_TYP_02.dgn	DRAWN - CTB	REVISED -					3887	96-00209-01-PV	McHENRY	271	13
PLOT SCALE = 1/8" = 1' / in.	CHECKED - GAB	REVISED -	REVISED -		SCALE: NONE SHEET NO. 5 OF 8 SHEETS STA. TO STA.			CONTRACT NO. 63553				
PLOT DATE = 10/24/2011	DATE - 10/24/11	REVISED -	REVISED -		FED. ROAD DIST. NO. 1 ILLINOIS FED. AID PROJECT HPP-406(1003)							