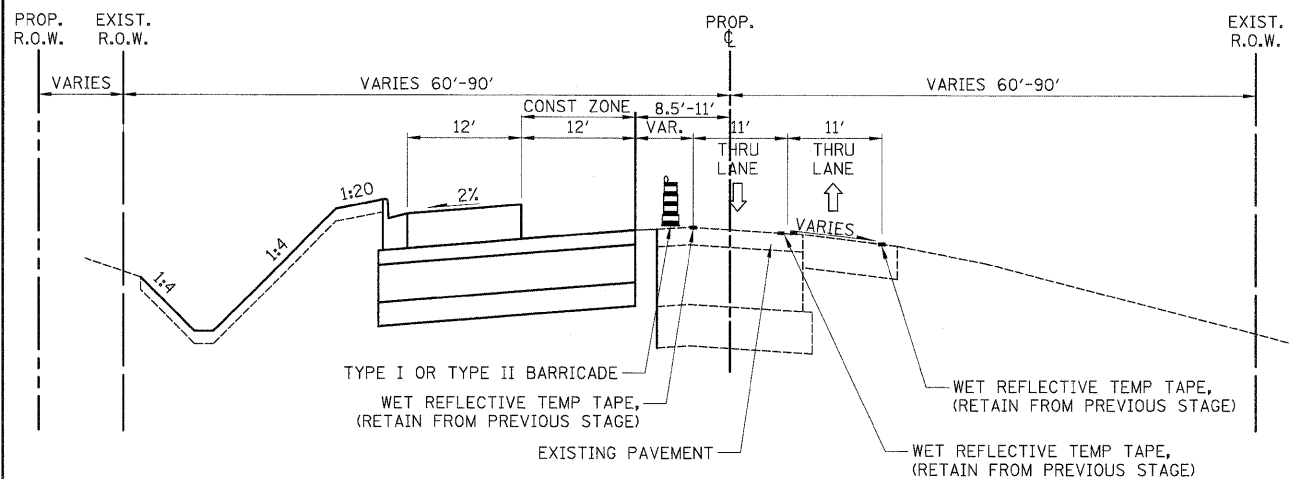


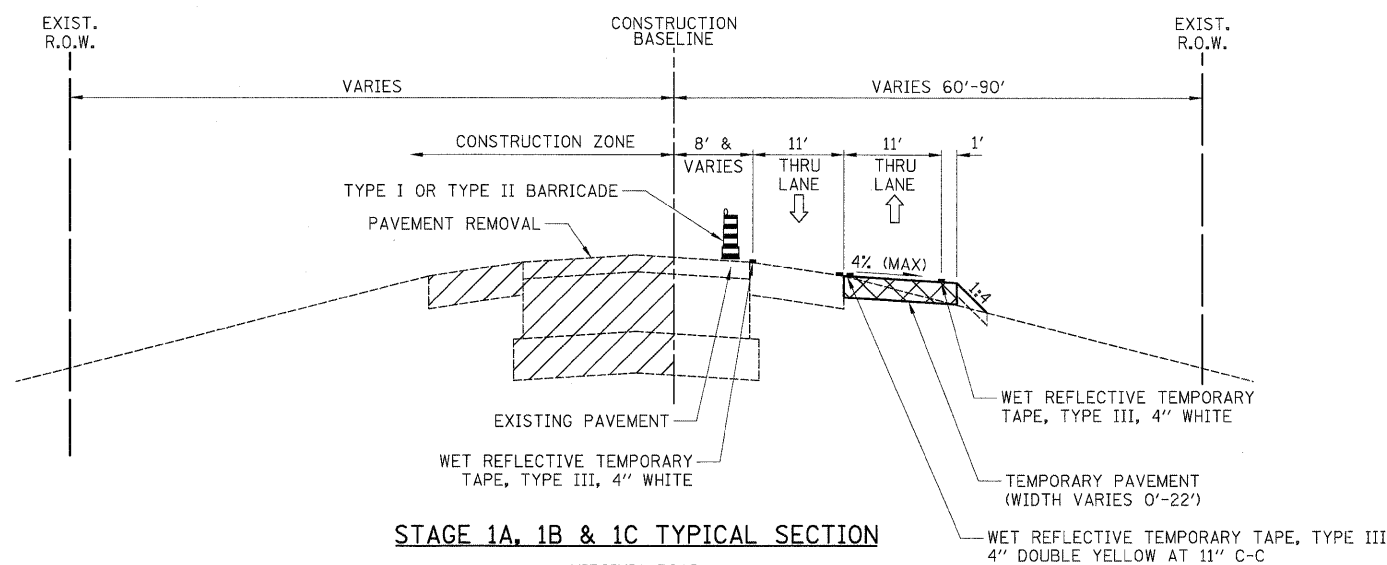
**STAGE 1A TYPICAL SECTION**

ILLINOIS ROUTE 31  
STA. 208+78.12 TO STA. 279+44.88



**STAGE 1B TYPICAL SECTION**

ILLINOIS ROUTE 31  
STA. 208+78.12 TO STA. 279+44.88



**STAGE 1A, 1B & 1C TYPICAL SECTION**

VIRGINIA ROAD  
STA. 89+00 TO STA. 95+00

PRE-STAGE 1A

- CONSTRUCT CULVERTS ON ILLINOIS ROUTE 31 AT STATIONS 221+05, 235+15 AND 265+47. DAILY LANE CLOSURES OF THE SINGLE THRU LANES IN EACH DIRECTION WILL BE ALLOWED IN ACCORDANCE WITH STANDARD 70201. THE EXISTING PAVEMENT SHALL BE PATCHED WITH CLASS D PATCHES, 10 INCH AND SHALL BE PAID AS SUCH.
- CONSTRUCT STORM SEWER ACROSS THE EXISTING PAVEMENT ON VIRGINIA ROAD AT STATION 93+70. DAILY LANE CLOSURES OF THE SINGLE THRU LANES IN EACH DIRECTION WILL BE ALLOWED IN ACCORDANCE WITH STANDARD 70201. THE EXISTING PAVEMENT SHALL BE PATCHED WITH CLASS D PATCHES, 10 INCH AND SHALL BE PAID AS SUCH.
- CONSTRUCT TEMPORARY PAVEMENT ON VIRGINIA ROAD.
- CONSTRUCT TEMPORARY PAVEMENT ON EAST SIDE OF ILLINOIS ROUTE 31.
- INSTALL TEMPORARY TRAFFIC SIGNALS.

STAGE 1A

- INSTALL EROSION CONTROL MEASURES.
- REMOVE CONFLICTING PAVEMENT MARKINGS.
- INSTALL TEMPORARY PAVEMENT MARKINGS.
- CLOSE OFF SOUTHBOUND LANE OF ILLINOIS ROUTE 31. SHIFT TRAFFIC ONTO THE EAST SIDE OF ILLINOIS ROUTE 31.
- CLOSE OFF THE NORTH SIDE OF VIRGINIA ROAD BETWEEN STATIONS 90+00 AND 95+00. SHIFT THE TRAFFIC ON VIRGINIA ROAD TO THE TEMPORARY PAVEMENT.
- REMOVE EXISTING PAVEMENT SHOULDER AND OTHER COMPONENTS.
- GRADE THE SOUTHBOUND LANES, CONSTRUCT STORM SEWER AND OUTSIDE LANE PAVEMENT ON WEST SIDE OF ILLINOIS ROUTE 31.
- CONSTRUCT STORM SEWER AND PAVEMENT FOR RELOCATED VIRGINIA ROAD BETWEEN STATIONS 95+00 AND ILLINOIS ROUTE 31.
- RECONSTRUCT DRIVEWAYS AND DRIVEWAY CULVERTS.
- GRADE THE DITCHES.

PRE-STAGE 1B

- NOTICE OF CLOSURE OF TRINITY ROAD.
- INSTALL REGIONAL DETOUR FOR TRINITY ROAD CLOSURE.

STAGE 1B

- CLOSE TRINITY DRIVE TO COMPLETE CONSTRUCTION OF TRINITY DRIVE AND ILLINOIS ROUTE 31 INTERSECTION
- CONSTRUCT INSIDE LANE PAVEMENT ON WEST SIDE OF ILLINOIS ROUTE 31.
- CONTINUE CONSTRUCTION FOR RELOCATED VIRGINIA ROAD BETWEEN STATIONS 95+00 AND ILLINOIS ROUTE 31.

PRE-STAGE 1C

- INSTALL TEMPORARY PAVEMENT MARKING ON TEMPORARY PAVEMENT ON EAST SIDE OF ILLINOIS ROUTE 31.
- CONSTRUCT TEMPORARY PAVEMENT ON ILLINOIS ROUTE 31. DAILY LANE CLOSURES OF THE SINGLE THRU LANES IN EACH DIRECTION WILL BE ALLOWED IN ACCORDANCE WITH STANDARD 70201.
- INSTALL TEMPORARY PAVEMENT MARKING ON ILLINOIS ROUTE 31 TEMPORARY PAVEMENT.
- CONSTRUCT TEMPORARY PAVEMENT AND TEMPORARY PAVEMENT MARKINGS ON WESTBOUND LANES OF VIRGINIA ROAD AT ILLINOIS ROUTE 31.
- COMPLETE CONSTRUCTION OPERATIONS ON RELOCATED VIRGINIA ROAD, RECONSTRUCT DRIVEWAYS AND DRIVEWAY CULVERTS. GRADE THE DITCHES.
- SHIFT TEMPORARY SIGNAL HEADS

STAGE 1C

- SHIFT TRAFFIC TO TEMPORARY PAVEMENT
- COMPLETE PAVEMENT GAP FROM STATION 248+70 TO 249+44 ON THE WEST SIDE OF ILLINOIS ROUTE 31.
- COMPLETE RECONSTRUCT DRIVEWAYS AND DRIVEWAY CULVERTS. GRADE THE DITCHES.

FILE NAME =	USER NAME = dte	DESIGNED - DTE	REVISED -	<b>STATE OF ILLINOIS DEPARTMENT OF TRANSPORTATION</b>	<b>MAINTENANCE OF TRAFFIC TYPICAL SECTIONS</b>	F.A.U. RTE.	SECTION	COUNTY	TOTAL SHEETS	SHEET NO.	
Y:\2278 Virginia Klassen\cad\sheet\06-MO	\2278_MOT_1.TYP.dgn	DRAWN - DTE	REVISED -			3887	96-00209-01-PV	McHENRY	271	24	
	PLOT SCALE = 1/8" = 1' / in.	CHECKED - GAB	REVISED -			CONTRACT NO. 63553					
	PLOT DATE = 10/28/2011	DATE - 10/24/11	REVISED -			SCALE: NONE	SHEET NO. 1 OF 31 SHEETS	STA.	TO STA.	FED. ROAD DIST. NO. 1   ILLINOIS   FED. AID PROJECT HPP-4064003	