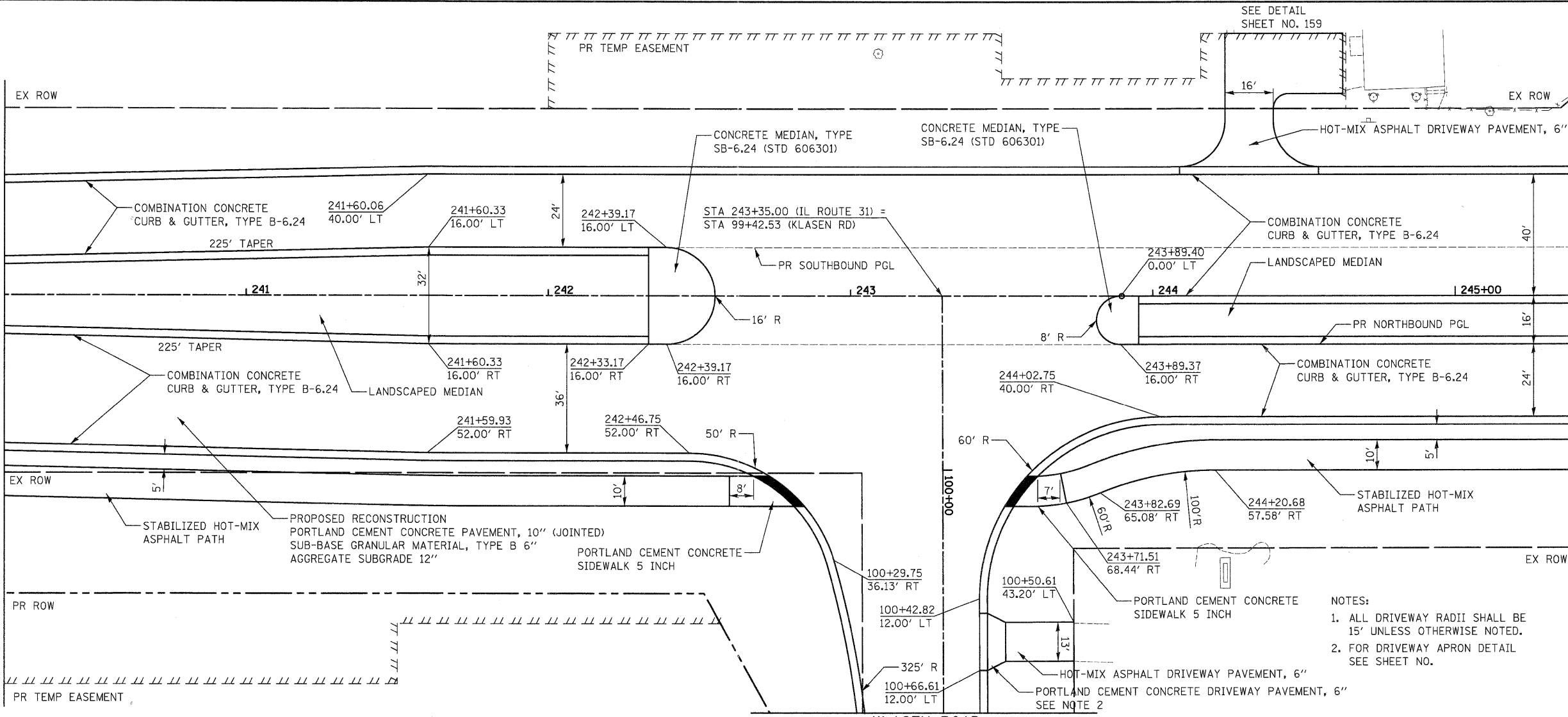


DATE	
BY	
REVIEWED	
PLANNED	
NOTE BOOK	
NO.	

DATE	
BY	
REVIEWED	
PLANNED	
NOTE BOOK	
NO.	

MATCH LINE STA. 240+20  
SEE SHEET NO. 74

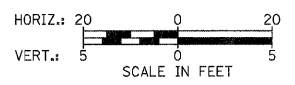
MATCH LINE STA. 245+40  
SEE SHEET NO. 76



KLASEN ROAD  
MATCH LINE STA. 100+80  
SEE SHEET NO. 83

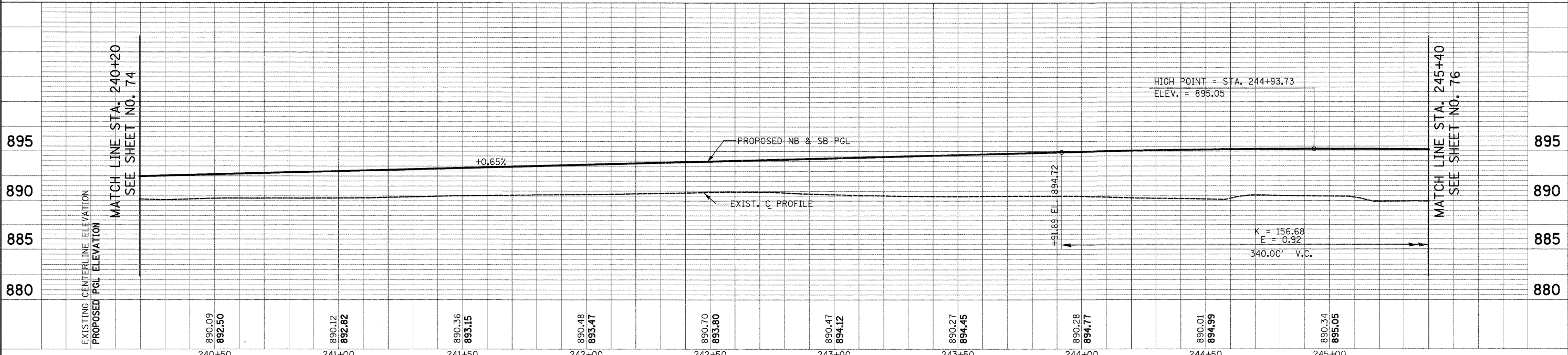
SEE DETAIL SHEET NO. 162 & 163

ILLINOIS ROUTE 31



MATCH LINE STA. 240+20  
SEE SHEET NO. 74

MATCH LINE STA. 245+40  
SEE SHEET NO. 76



FILE NAME = Y:\2278 Virginia Klase\cad\sheet\28-Plan	USER NAME = dte	DESIGNED - KWH	REVISED -	<b>STATE OF ILLINOIS DEPARTMENT OF TRANSPORTATION</b>	<b>PLAN AND PROFILE</b>	F.A.J. RTE. 3887	SECTION 96-00209-01-PV	COUNTY MCHENRY	TOTAL SHEETS 271	SHEET NO. 75		
PLOT SCALE = 20.0000' / in.	CHECKED - GAB	DATE - 10/24/11	REVISED -			SCALE: 1" = 20'	SHEET NO. 7 OF 19 SHEETS	STA. 240+20 TO STA. 245+40	FED. ROAD DIST. NO. 1 ILLINOIS FED. AID PROJECT HPP-40640031			
PLOT DATE = 10/24/2011	DATE - 10/24/11	REVISED -	REVISED -			CONTRACT NO. 63553						