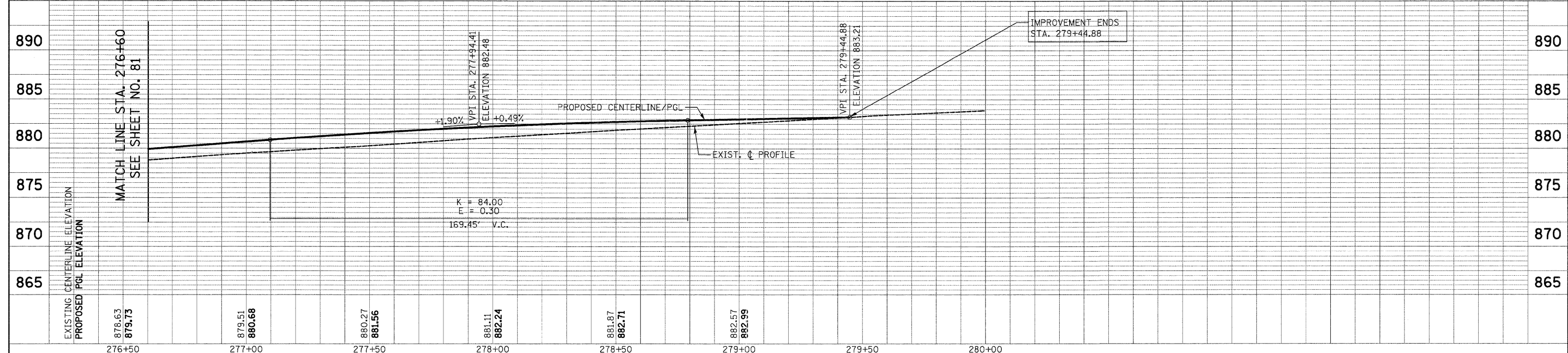
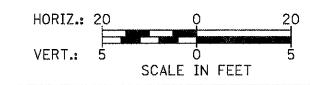


NOTES:
 1. ALL DRIVEWAY RADII SHALL BE 15' UNLESS OTHERWISE NOTED

ILLINOIS ROUTE 31



PLAN	DATE
BY	
REVIEWED	
PLOTTED	
ALIGNMENT CHECKED	
NOTE BOOK	
NO.	
CADD FILE NAME	

PROFILE	DATE
BY	
REVIEWED	
PLOTTED	
GRADES CHECKED	
NOTE BOOK	
NO.	
STRUCTURE NOTATIONS CIP/D	

FILE NAME =	USER NAME = dte	DESIGNED - KWH	REVISED -	STATE OF ILLINOIS DEPARTMENT OF TRANSPORTATION	PLAN AND PROFILE	F.A.U. RTE. 3887	SECTION 96-00209-01-PV	COUNTY McHENRY	TOTAL SHEETS 271	SHEET NO. 82	
Y:\2278 Virginia Klassen\load\sheet\08-Plan	nd\Profile\2278_P&P_14.dgn	DRAWN - DTE	REVISED -			SCALE: 1" = 20'	SHEET NO. 14 OF 19 SHEETS	STA. 276+60	TO STA. 279+44.88	FED. ROAD DIST. NO. 1	ILLINOIS FED. AID PROJECT HPP-406(003)
PLOT SCALE = 20.0000' / in.	CHECKED - GAB	REVISED -	REVISED -			CONTRACT NO. 63553					
PLOT DATE = 10/24/2011	DATE - 10/24/11	REVISED -	REVISED -								