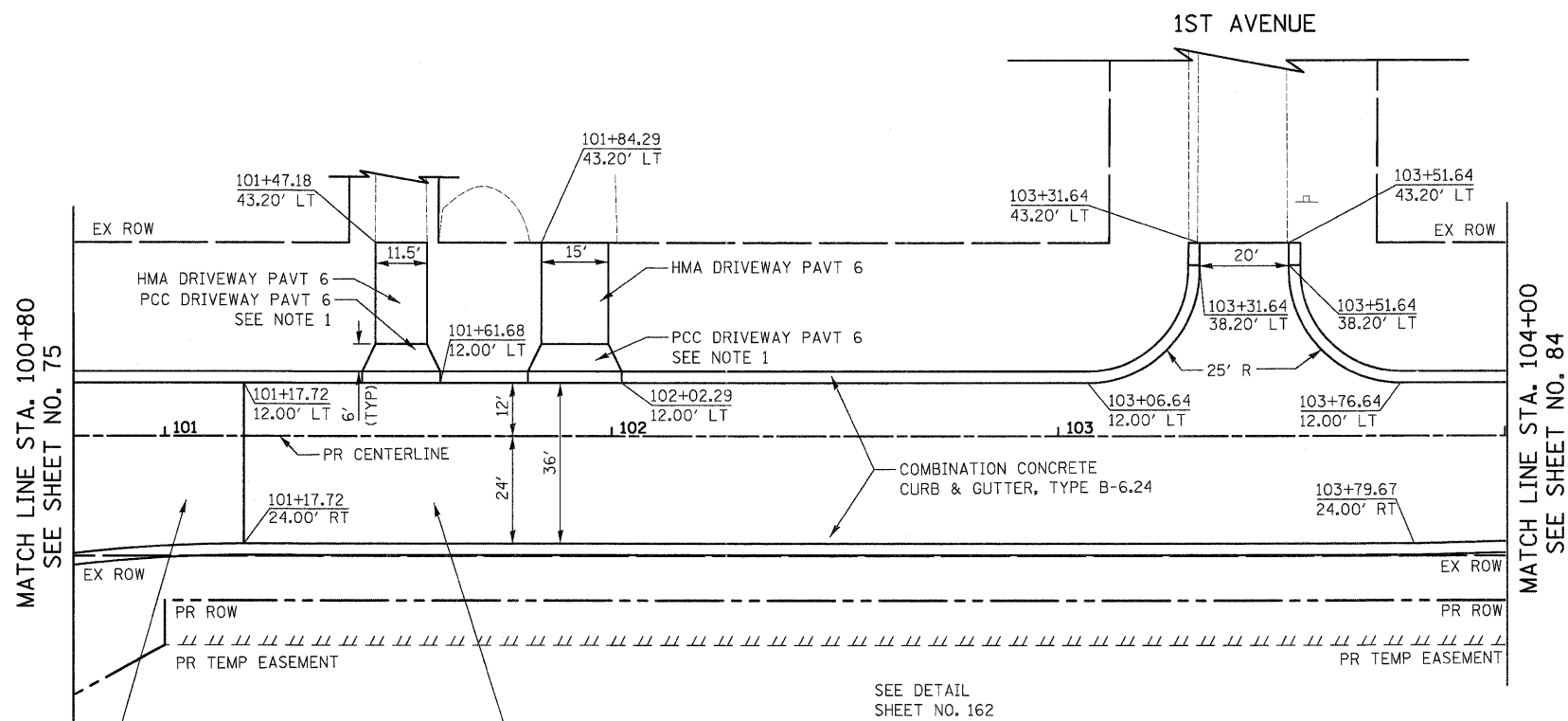


PLAN	SURVEYED	BY	DATE
	PLOTTED		
	ALIGNED		
	CHECKED		
	PAID FILE NAME		
	NO.		

PROFILE	SURVEYED	BY	DATE
	GRADES CHECKED		
	STRUCTURE NOTATIONS CHECKED		
	NO.		



PROPOSED RECONSTRUCTION  
 PORTLAND CEMENT CONCRETE PAVEMENT, 10" (JOINTED)  
 SUB-BASE GRANULAR MATERIAL, TYPE B 6"  
 AGGREGATE SUBGRADE 12"

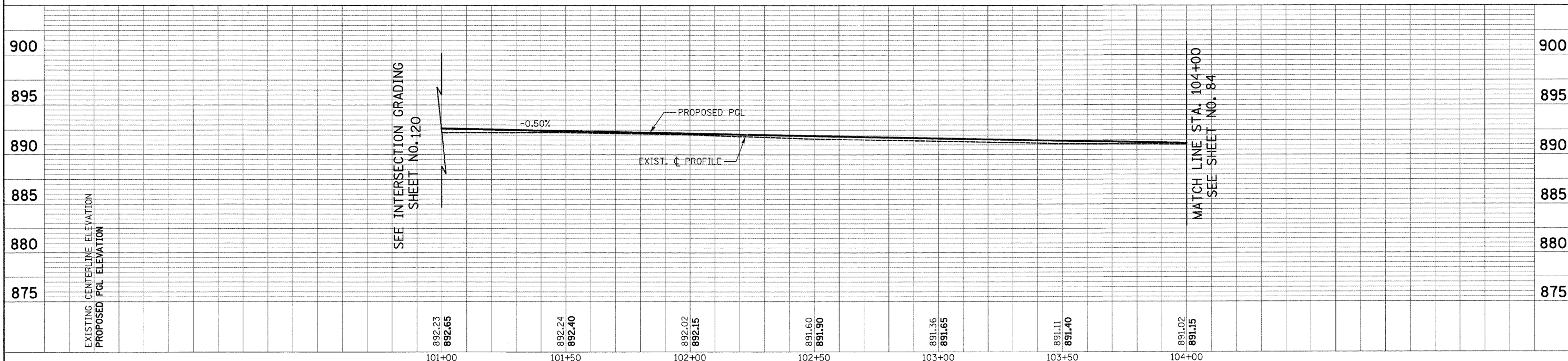
PROPOSED RECONSTRUCTION  
 HOT-MIX ASPHALT SURFACE COURSE, MIX "D", N50, 2"  
 HOT-MIX ASPHALT BINDER COURSE, IL-19.0, N50, 4"  
 AGGREGATE SUBGRADE, 12"  
 POROUS GRANULAR EMBANKMENT, SUBGRADE, VARIABLE DEPTH

SEE DETAIL  
 SHEET NO. 162

NOTES:  
 1. FOR DRIVEWAY APRON DETAIL  
 SEE SHEET NO.



KLASEEN ROAD



FILE NAME =	USER NAME = dte	DESIGNED - KWH	REVISED -	<b>STATE OF ILLINOIS DEPARTMENT OF TRANSPORTATION</b>	<b>PLAN AND PROFILE</b>	F.A.U. RTE.	SECTION	COUNTY	TOTAL SHEETS	SHEET NO.	
Y:\2278 Virginia Klaseen\cad\sheet\88-Plan	ndProfile\2278_P&P_15.dgn	DRAWN - DTE	REVISED -			3887	96-00209-01-PV	McHENRY	271	83	
	PLOT SCALE = 28.0000' / 1in.	CHECKED - GAB	REVISED -			SCALE: 1" = 20'		SHEET NO. 15 OF 19 SHEETS		STA. 100+80 TO STA. 104+00	CONTRACT NO. 63553
	PLOT DATE = 10/24/2011	DATE - 10/24/11	REVISED -			FED. ROAD DIST. NO. 1 ILLINOIS   FED. AID PROJECT HPP-40640031					