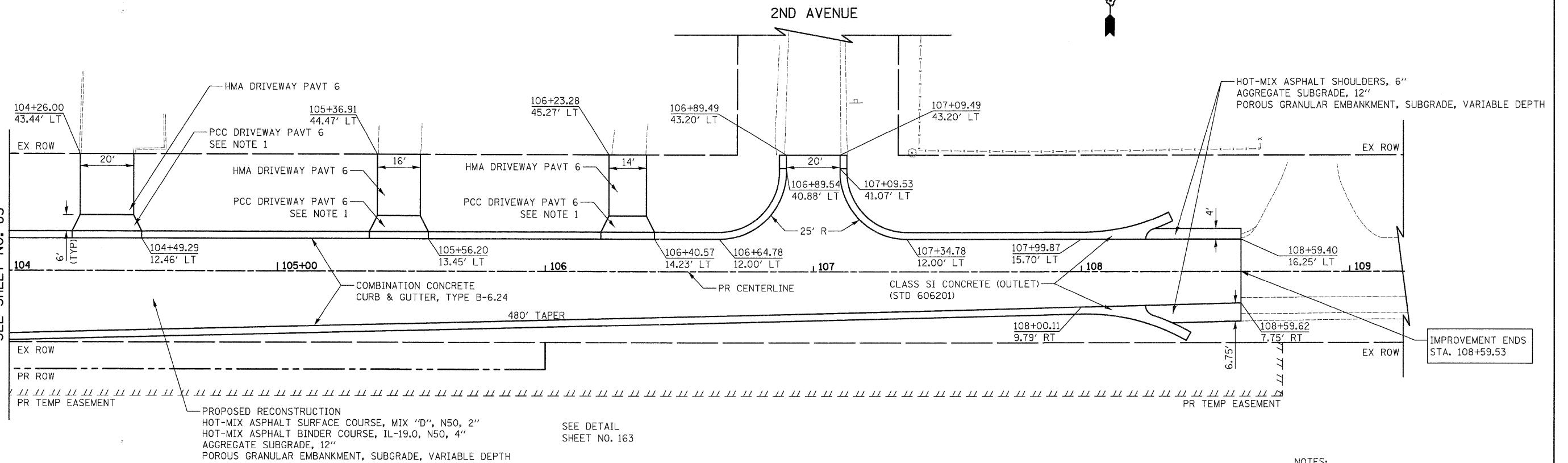


DATE	
BY	
REVIEWED	
PLANNED	
ALIGNED	
CHECKED	
NO.	
NOTE BOOK	
NO.	
FILE NAME	

DATE	
BY	
REVIEWED	
PLANNED	
ALIGNED	
CHECKED	
NO.	
NOTE BOOK	
NO.	
FILE NAME	

MATCH LINE STA. 104+00  
SEE SHEET NO. 83

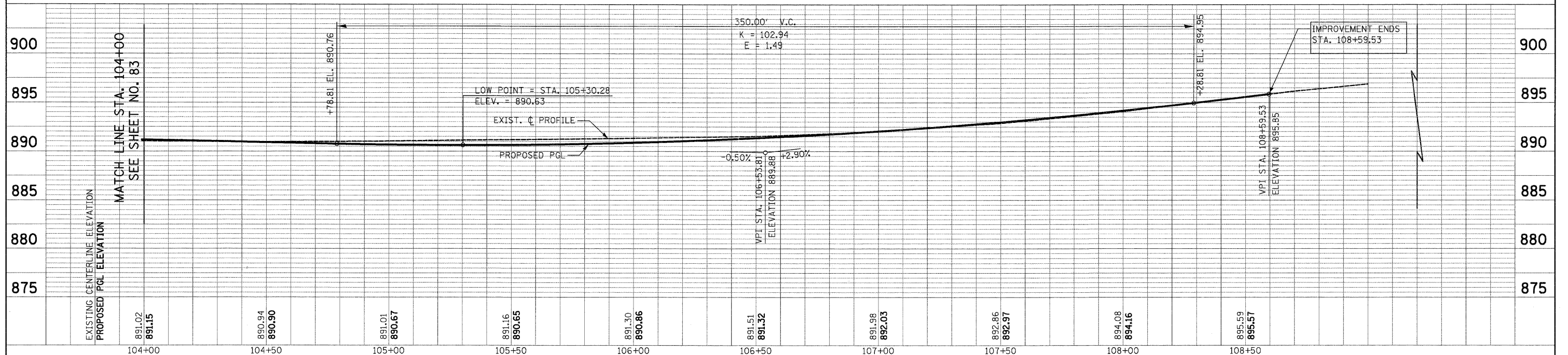
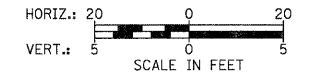


PROPOSED RECONSTRUCTION  
HOT-MIX ASPHALT SURFACE COURSE, MIX "D", N50, 2"  
HOT-MIX ASPHALT BINDER COURSE, IL-19.0, N50, 4"  
AGGREGATE SUBGRADE, 12"  
POROUS GRANULAR EMBANKMENT, SUBGRADE, VARIABLE DEPTH

SEE DETAIL  
SHEET NO. 163

NOTES:  
1. FOR DRIVEWAY APRON DETAIL  
SEE SHEET NO.

KLASEN ROAD



FILE NAME =	USER NAME = dse	DESIGNED - KWH	REVISED -	<b>STATE OF ILLINOIS DEPARTMENT OF TRANSPORTATION</b>	<b>PLAN AND PROFILE</b>	F.A.J. RTE.	SECTION	COUNTY	TOTAL SHEETS	SHEET NO.	
Y:\2278 Virginia Klassen\cad\sheet\28-Plan and Profile\2278_P&P_16.dgn		DRAWN - DTE	REVISED -			3887	96-00209-01-PV	McHENRY	271	84	
PLOT SCALE = 20.0000' / 1 in.		CHECKED - GAB	REVISED -			CONTRACT NO. 63553					
PLOT DATE = 10/24/2011		DATE - 10/24/11	REVISED -			FED. ROAD DIST. NO. 1 ILLINOIS FED. AID PROJECT HPP-40640031					

SCALE: 1" = 20' SHEET NO. 16 OF 19 SHEETS STA. 104+00 TO STA. 108+59.53