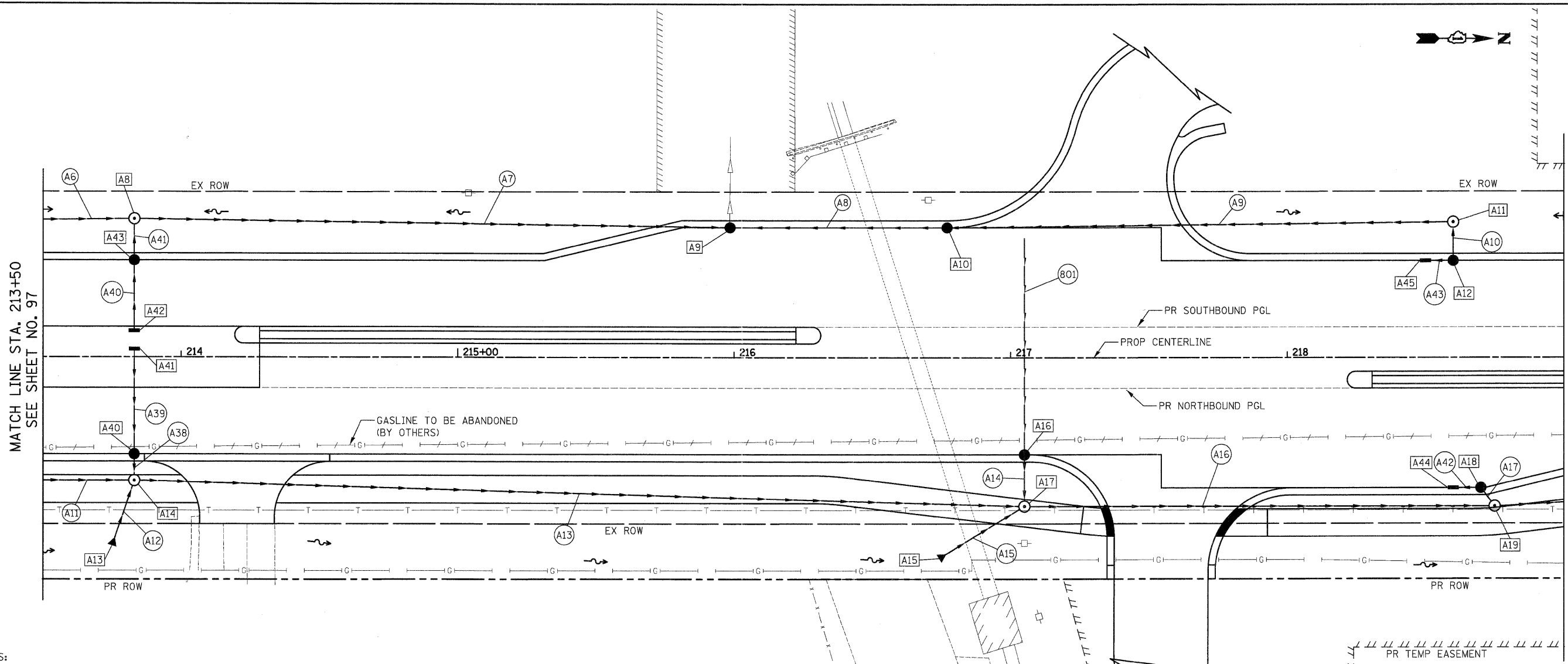
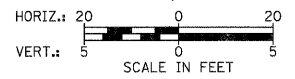


DATE	
BY	
PLAN	
NO.	
NO.	
NO.	
NO.	
NO.	

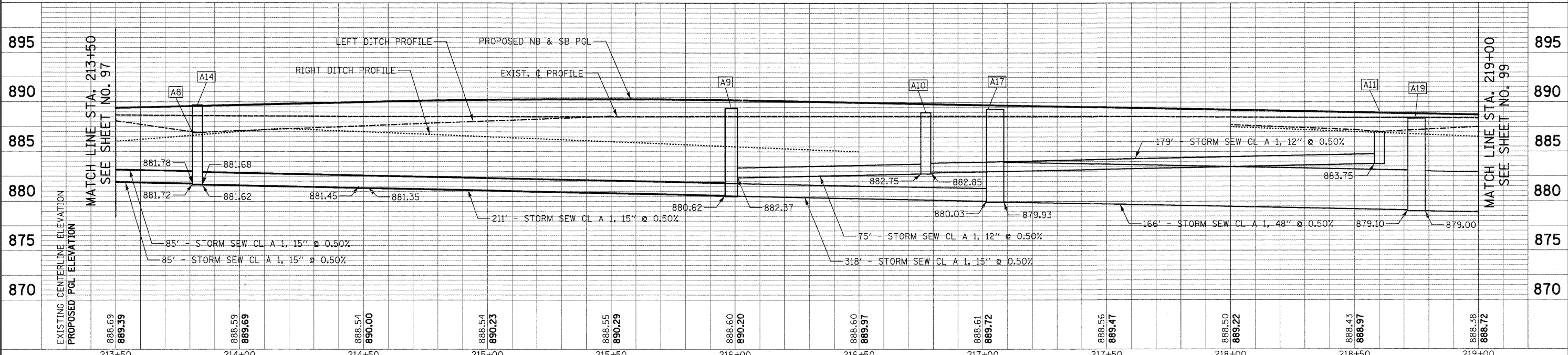
DATE	
BY	
PROFILE	
NO.	
NO.	
NO.	
NO.	
NO.	



NOTES:
1. SEE SHEET NO. 116 FOR DRAINAGE CALLOFFS



ILLINOIS ROUTE 31



888.69 889.39	888.59 889.69	888.54 890.00	888.54 890.23	888.55 890.29	888.60 890.20	888.60 889.97	888.61 889.72	888.56 889.47	888.50 889.22	888.43 888.97	888.38 888.72
213+50	214+00	214+50	215+00	215+50	216+00	216+50	217+00	217+50	218+00	218+50	219+00

FILE NAME = Y:\2278 Virginia Klassen\cadd\sheet\11-DrainageAndUtilities\2278.D&U.02.dgn	USER NAME = dte	DESIGNED - KWH	REVISED -	STATE OF ILLINOIS DEPARTMENT OF TRANSPORTATION	DRAINAGE AND UTILITY PLAN	F.A.U. RTE. 3887	SECTION 96-00209-01-PV	COUNTY McHENRY	TOTAL SHEETS 271	SHEET NO. 98
PLOT SCALE = 20.0000' / in.	CHECKED - GAB	REVISOR -	SCALE: 1" = 20'			SHEET NO. 2 OF 23 SHEETS	STA. 213+50 TO STA. 219+00	FED. ROAD DIST. NO. 1 ILLINOIS		FED. AID PROJECT HPP-4064(003)
PLOT DATE = 10/24/2011	DATE - 10/24/11	REVISOR -	CONTRACT NO. 63553							