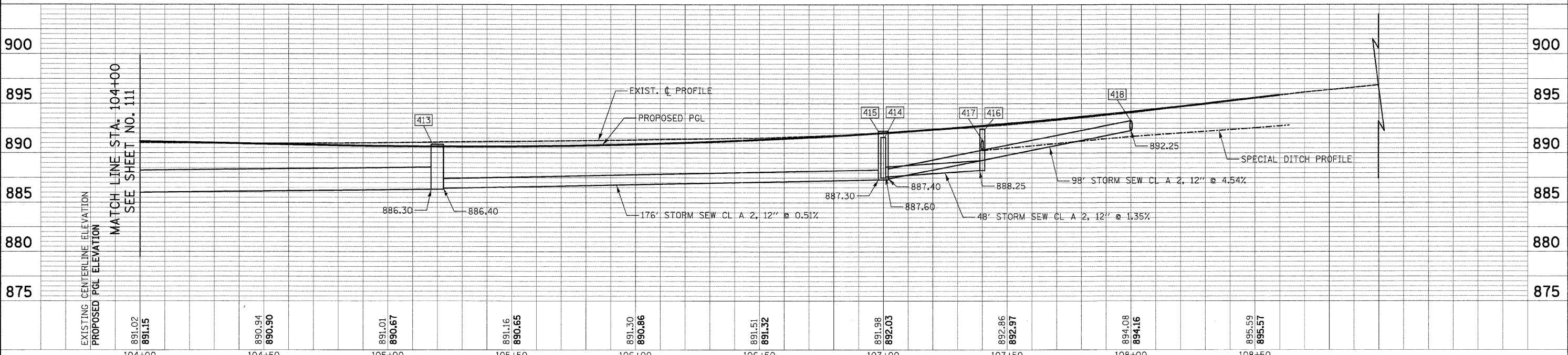
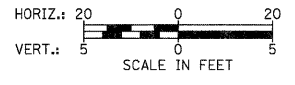
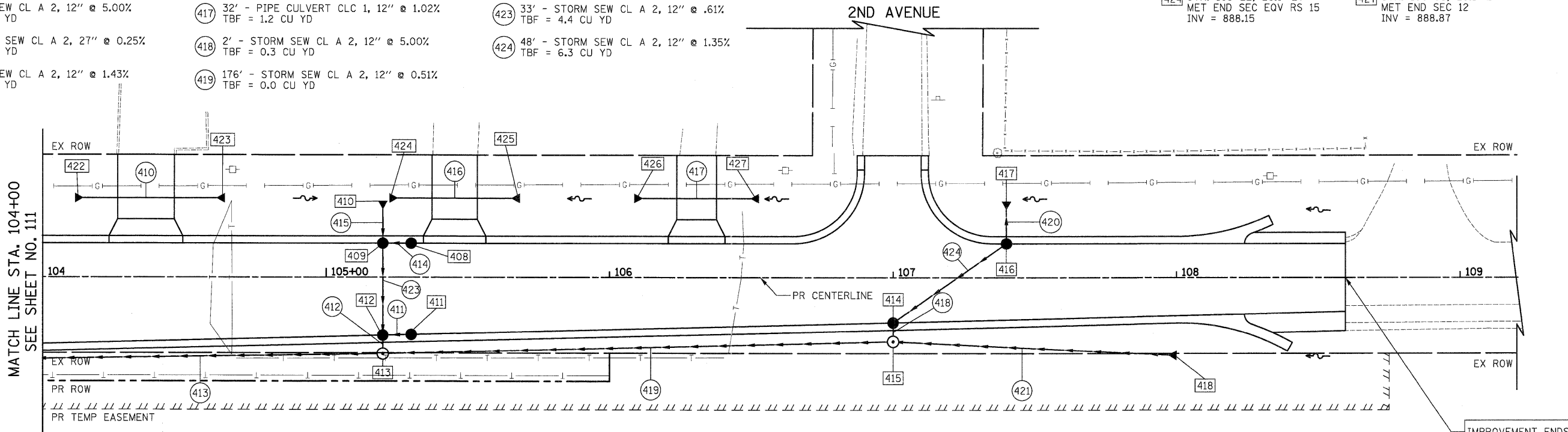


- 408 STA. 105+30, 13.0' LT
CB TC T24F&G
RIM = 890.27
INV = 887.00 (W)
- 409 STA. 105+20, 14.0' LT
CB TA 4 DIA T24F&G
RIM = 890.27
INV = 886.90 (N)
INV = 886.90 (E)
INV = 886.80 (S)
- 410 STA. 105+20, 27.0' LT
PRC FLAR END SEC 12
INV = 888.10 (S)
- 411 STA. 105+30, 21.5' RT
CB TC T24F&G
RIM = 890.10
INV = 886.70 (W)
- 412 STA. 105+20, 22.5' RT
CB TA 4 DIA T24F&G
RIM = 890.11
INV = 886.60 (E)
INV = 886.60 (N)
INV = 886.50 (S)
- 413 STA. 105+20, 28.1' RT
MAN TA 4 DIA TIF CL
RIM = 890.85
INV = 886.40 (E)
INV = 886.40 (N)
INV = 886.30 (W)
- 414 STA. 107+00, 17.5' RT
CB TA 4 DIA T24F&G
RIM = 891.59
INV = 887.60 (NW)
INV = 887.50 (S)
- 415 STA. 107+00, 22.6' RT
MAN TA 4 DIA TIF CL
RIM = 892.22
INV = 887.80 (E)
INV = 887.40 (N)
INV = 887.30 (W)
- 416 STA. 107+40, 13.5' LT
CB TA 4 DIA T24F&G
RIM = 892.42
INV = 888.75 (N)
INV = 888.25 (SW)
- 417 STA. 107+40, 27.1' LT
PRC FLAR END SEC 12
INV = 890.30 (S)
- 418 STA. 108+00, 27.5' RT
PRC FLAR END SEC 12
INV = 892.25 (W)
- 420 5' - STORM SEW CL A 2, 12" @ 12.92%
TBF = 0.3 CU YD
- 421 92' - STORM SEW CL A 2, 12" @ 4.54%
TBF = 0.0 CU YD
- 422 34' - PIPE CULVERTS CLC 1, EQRS 15" @ 0.14%
TBF = 1.1 CU YD
- 423 2' - STORM SEW CL A 2, 12" @ 5.00%
TBF = 0.5 CU YD
- 424 48' - STORM SEW CL A 2, 12" @ 1.35%
TBF = 6.3 CU YD
- 425 5' - STORM SEW CL A 2, 12" @ 10.91%
TBF = 0.3 CU YD
- 426 32' - PIPE CULVERTS CLC 1, 12" @ 1.02%
TBF = 1.2 CU YD
- 427 2' - STORM SEW CL A 2, 12" @ 5.00%
TBF = 0.3 CU YD
- 428 176' - STORM SEW CL A 2, 12" @ 0.51%
TBF = 0.0 CU YD
- 429 33' - STORM SEW CL A 2, 12" @ .61%
TBF = 4.4 CU YD
- 430 2' - STORM SEW CL A 2, 12" @ 0.25%
TBF = 0.0 CU YD
- 431 6' - STORM SEW CL A 2, 12" @ 1.43%
TBF = 0.9 CU YD
- 432 2' - STORM SEW CL A 2, 12" @ 5.00%
TBF = 0.3 CU YD
- 433 41' - PIPE CULVERT CLC 1, EQRS 15" @ 0.53%
TBF = 1.7 CU YD
- 434 6' - STORM SEW CL A 2, 12" @ 1.43%
TBF = 0.9 CU YD
- 435 2' - STORM SEW CL A 2, 12" @ 5.00%
TBF = 0.5 CU YD
- 436 2' - STORM SEW CL A 2, 12" @ 10.91%
TBF = 1.1 CU YD
- 437 32' - PIPE CULVERTS CLC 1, 12" @ 1.02%
TBF = 1.2 CU YD
- 438 2' - STORM SEW CL A 2, 12" @ 5.00%
TBF = 0.3 CU YD
- 439 176' - STORM SEW CL A 2, 12" @ 0.51%
TBF = 0.0 CU YD
- 440 2' - STORM SEW CL A 2, 12" @ 5.00%
TBF = 0.3 CU YD
- 441 6' - STORM SEW CL A 2, 12" @ 1.43%
TBF = 0.9 CU YD
- 442 2' - STORM SEW CL A 2, 12" @ 5.00%
TBF = 0.3 CU YD
- 443 2' - STORM SEW CL A 2, 12" @ 5.00%
TBF = 0.3 CU YD
- 444 2' - STORM SEW CL A 2, 12" @ 5.00%
TBF = 0.3 CU YD
- 445 2' - STORM SEW CL A 2, 12" @ 5.00%
TBF = 0.3 CU YD
- 446 2' - STORM SEW CL A 2, 12" @ 5.00%
TBF = 0.3 CU YD
- 447 2' - STORM SEW CL A 2, 12" @ 5.00%
TBF = 0.3 CU YD
- 448 2' - STORM SEW CL A 2, 12" @ 5.00%
TBF = 0.3 CU YD
- 449 2' - STORM SEW CL A 2, 12" @ 5.00%
TBF = 0.3 CU YD
- 450 2' - STORM SEW CL A 2, 12" @ 5.00%
TBF = 0.3 CU YD
- 451 2' - STORM SEW CL A 2, 12" @ 5.00%
TBF = 0.3 CU YD
- 452 2' - STORM SEW CL A 2, 12" @ 5.00%
TBF = 0.3 CU YD
- 453 2' - STORM SEW CL A 2, 12" @ 5.00%
TBF = 0.3 CU YD
- 454 2' - STORM SEW CL A 2, 12" @ 5.00%
TBF = 0.3 CU YD
- 455 2' - STORM SEW CL A 2, 12" @ 5.00%
TBF = 0.3 CU YD
- 456 2' - STORM SEW CL A 2, 12" @ 5.00%
TBF = 0.3 CU YD
- 457 2' - STORM SEW CL A 2, 12" @ 5.00%
TBF = 0.3 CU YD
- 458 2' - STORM SEW CL A 2, 12" @ 5.00%
TBF = 0.3 CU YD
- 459 2' - STORM SEW CL A 2, 12" @ 5.00%
TBF = 0.3 CU YD
- 460 2' - STORM SEW CL A 2, 12" @ 5.00%
TBF = 0.3 CU YD
- 461 2' - STORM SEW CL A 2, 12" @ 5.00%
TBF = 0.3 CU YD
- 462 2' - STORM SEW CL A 2, 12" @ 5.00%
TBF = 0.3 CU YD
- 463 2' - STORM SEW CL A 2, 12" @ 5.00%
TBF = 0.3 CU YD
- 464 2' - STORM SEW CL A 2, 12" @ 5.00%
TBF = 0.3 CU YD
- 465 2' - STORM SEW CL A 2, 12" @ 5.00%
TBF = 0.3 CU YD
- 466 2' - STORM SEW CL A 2, 12" @ 5.00%
TBF = 0.3 CU YD
- 467 2' - STORM SEW CL A 2, 12" @ 5.00%
TBF = 0.3 CU YD
- 468 2' - STORM SEW CL A 2, 12" @ 5.00%
TBF = 0.3 CU YD
- 469 2' - STORM SEW CL A 2, 12" @ 5.00%
TBF = 0.3 CU YD
- 470 2' - STORM SEW CL A 2, 12" @ 5.00%
TBF = 0.3 CU YD
- 471 2' - STORM SEW CL A 2, 12" @ 5.00%
TBF = 0.3 CU YD
- 472 2' - STORM SEW CL A 2, 12" @ 5.00%
TBF = 0.3 CU YD
- 473 2' - STORM SEW CL A 2, 12" @ 5.00%
TBF = 0.3 CU YD
- 474 2' - STORM SEW CL A 2, 12" @ 5.00%
TBF = 0.3 CU YD
- 475 2' - STORM SEW CL A 2, 12" @ 5.00%
TBF = 0.3 CU YD
- 476 2' - STORM SEW CL A 2, 12" @ 5.00%
TBF = 0.3 CU YD
- 477 2' - STORM SEW CL A 2, 12" @ 5.00%
TBF = 0.3 CU YD
- 478 2' - STORM SEW CL A 2, 12" @ 5.00%
TBF = 0.3 CU YD
- 479 2' - STORM SEW CL A 2, 12" @ 5.00%
TBF = 0.3 CU YD
- 480 2' - STORM SEW CL A 2, 12" @ 5.00%
TBF = 0.3 CU YD
- 481 2' - STORM SEW CL A 2, 12" @ 5.00%
TBF = 0.3 CU YD
- 482 2' - STORM SEW CL A 2, 12" @ 5.00%
TBF = 0.3 CU YD
- 483 2' - STORM SEW CL A 2, 12" @ 5.00%
TBF = 0.3 CU YD
- 484 2' - STORM SEW CL A 2, 12" @ 5.00%
TBF = 0.3 CU YD
- 485 2' - STORM SEW CL A 2, 12" @ 5.00%
TBF = 0.3 CU YD
- 486 2' - STORM SEW CL A 2, 12" @ 5.00%
TBF = 0.3 CU YD
- 487 2' - STORM SEW CL A 2, 12" @ 5.00%
TBF = 0.3 CU YD
- 488 2' - STORM SEW CL A 2, 12" @ 5.00%
TBF = 0.3 CU YD
- 489 2' - STORM SEW CL A 2, 12" @ 5.00%
TBF = 0.3 CU YD
- 490 2' - STORM SEW CL A 2, 12" @ 5.00%
TBF = 0.3 CU YD
- 491 2' - STORM SEW CL A 2, 12" @ 5.00%
TBF = 0.3 CU YD
- 492 2' - STORM SEW CL A 2, 12" @ 5.00%
TBF = 0.3 CU YD
- 493 2' - STORM SEW CL A 2, 12" @ 5.00%
TBF = 0.3 CU YD
- 494 2' - STORM SEW CL A 2, 12" @ 5.00%
TBF = 0.3 CU YD
- 495 2' - STORM SEW CL A 2, 12" @ 5.00%
TBF = 0.3 CU YD
- 496 2' - STORM SEW CL A 2, 12" @ 5.00%
TBF = 0.3 CU YD
- 497 2' - STORM SEW CL A 2, 12" @ 5.00%
TBF = 0.3 CU YD
- 498 2' - STORM SEW CL A 2, 12" @ 5.00%
TBF = 0.3 CU YD
- 499 2' - STORM SEW CL A 2, 12" @ 5.00%
TBF = 0.3 CU YD
- 500 2' - STORM SEW CL A 2, 12" @ 5.00%
TBF = 0.3 CU YD



PLAN	SURVEYED	DATE
	PLOTTED	
	CHECKED	
	ALIGNED	
	FILED	
	NO.	

PROFILE	SURVEYED	DATE
	PLOTTED	
	CHECKED	
	GRADES	
	STRUCTURE	
	NOTATIONS	
	NO.	

FILE NAME =	USER NAME = dtc	DESIGNED - KWH	REVISED -	STATE OF ILLINOIS DEPARTMENT OF TRANSPORTATION	DRAINAGE AND UTILITY PLAN	F.A.U. RTE.	SECTION	COUNTY	TOTAL SHEETS	SHEET NO.	
Y:\2278 Virginia Klaseen\road\sheet\11-D\road\Utilities\2278_D&U_16.dgn	PLOT SCALE = 20,0000' / in.	DRAWN - DTE	REVISED -			3887	96-00209-01-PV	MOHENTRY	271	112	
	PLOT DATE = 10/24/2011	CHECKED - GAB	REVISED -			CONTRACT NO. 63553					
		DATE - 10/24/11	REVISED -			FED. ROAD DIST. NO. 1 ILLINOIS FED. AID PROJECT HPP-4064003					