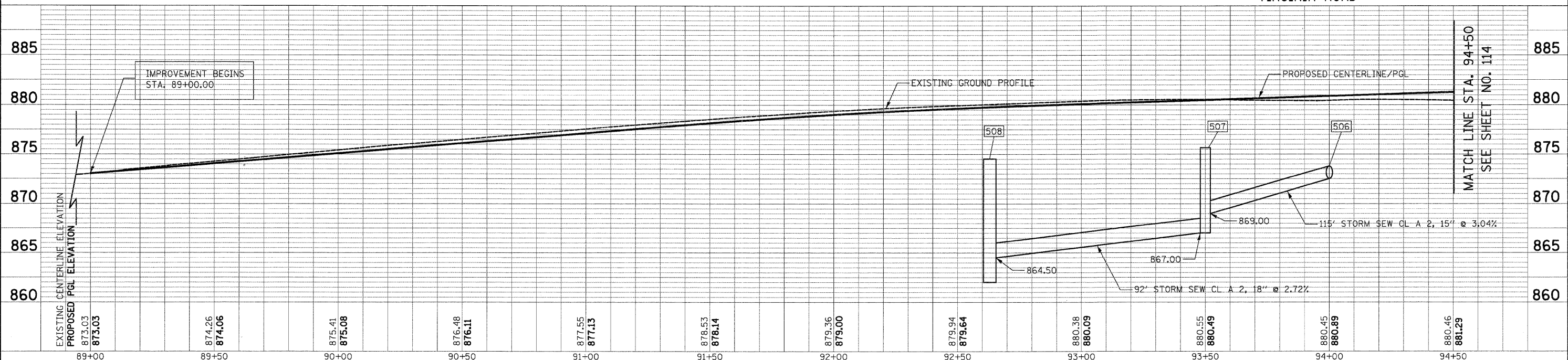
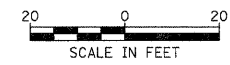
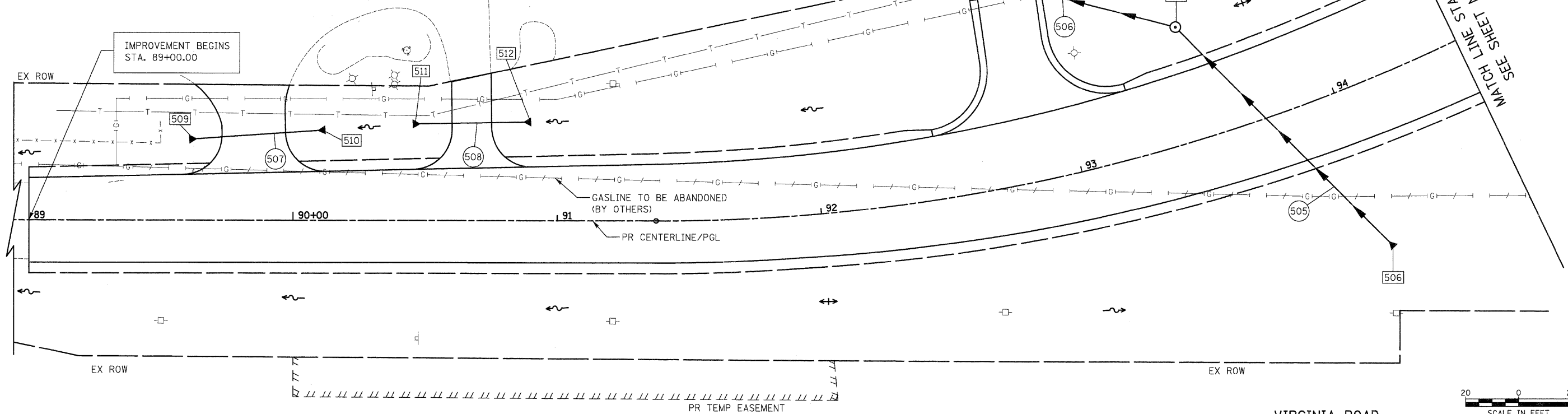


- 506 STA. 94+00, 62.8' RT
PRC FLAR END SEC 18
INV = 872.50 (N)
- 507 STA. 93+50, 43.4' LT
MAN TA 4 DIA TIF CL
RIM = 875.65
INV = 869.00 (S)
INV = 867.00 (W)
- 508 STA. 92+63, 86.1' LT
MAN TA 5 DIA TIF CL
RIM = 874.53
INV = 864.50 (SE)
INV = 862.10 EX (E)
INV = 862.00 EX (N)
- 509 STA. 89+61, 30.6' LT
END SEC EQV R-S 15
INV = 871.67
- 510 STA. 90+12, 34.2' LT
END SEC EQV R-S 15
INV = 872.08
- 511 STA. 90+45, 36.5' LT
END SEC EQV R-S 12
INV = 872.35
- 512 STA. 90+90, 37.4' LT
END SEC EQV R-S 12
INV = 873.29
- 505 110' - STORM SEW CL A 2, 18" @ 3.04%
TBF = 61.8 CU YD
- 506 85' - STORM SEW CL A 2, 18" @ 2.72%
TBF = 45.6 CU YD
- 507 40' - PIPE CULVERT CLC 1, EQRS 15" @ 0.80%
TBF = 2.2 CU YD
- 508 33' - PIPE CULVERT CLC 1, EQRS 15" @ 2.09%
TBF = 5.5 CU YD



| | |
|-----------|------|
| PLAN | DATE |
| BY | |
| REVISIONS | |
| NO. | |

| | |
|-----------|------|
| PROFILE | DATE |
| BY | |
| REVISIONS | |
| NO. | |