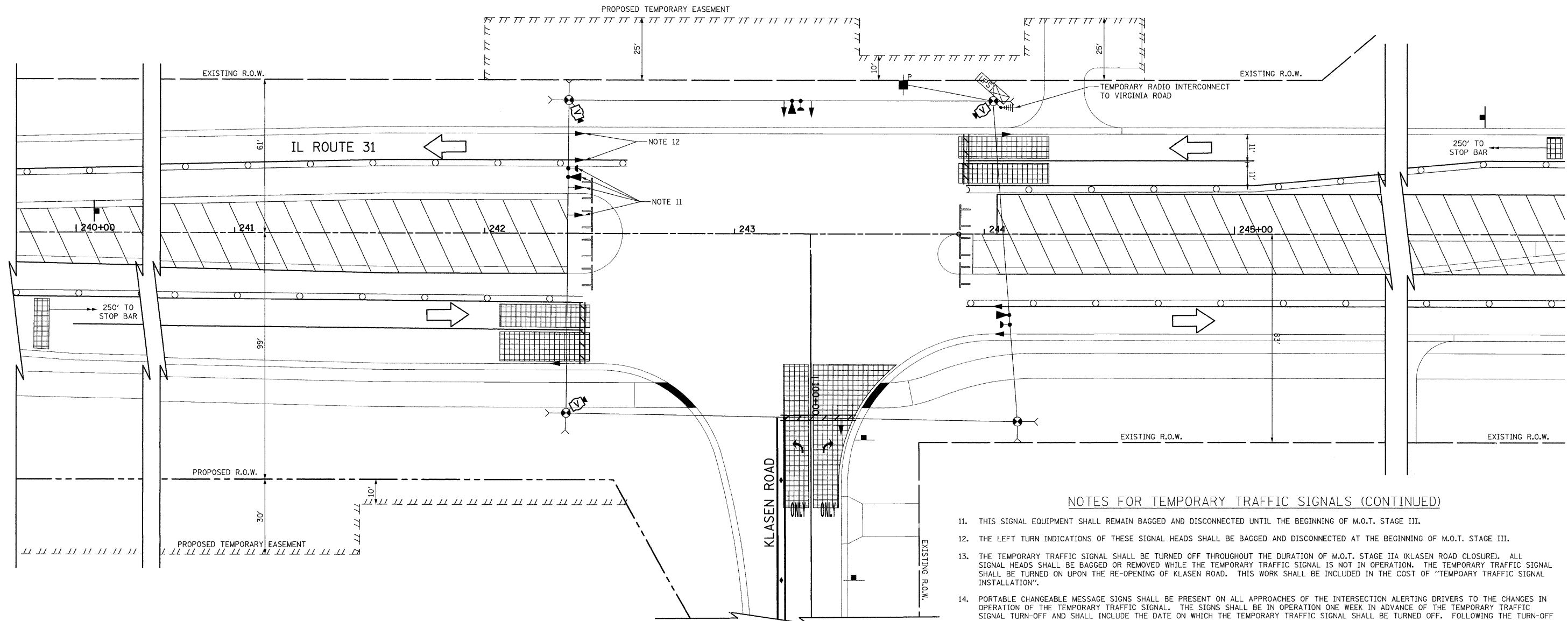
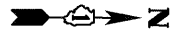


NOTES FOR TEMPORARY TRAFFIC SIGNALS

1. ALL CONTROL EQUIPMENT INCLUDING EMERGENCY VEHICLE PRE-EMPTION AND COMMUNICATION DEVICES FOR THE TEMPORARY TRAFFIC SIGNAL(S) SHALL BE FURNISHED BY THE CONTRACTOR.
2. ONLY CONTROLLERS SUPPLIED BY ONE OF THE DISTRICT APPROVED CLOSED LOOP EQUIPMENT MANUFACTURERS WILL BE APPROVED FOR USE AT TEMPORARY SIGNAL LOCATIONS. ALL CONTROLLERS USED FOR TEMPORARY TRAFFIC SIGNALS SHALL BE FULLY ACTUATED NEMA MICROPROCESSOR BASED WITH RS232 DATA ENTRY PORTS COMPATIBLE WITH EXISTING MONITORING SOFTWARE APPROVED BY IDOT DISTRICT 1, INSTALLED IN A NEMA TS2 CABINET. ONLY ONE BRAND OF CONTROLLER WILL BE ACCEPTED FOR ANY ONE CONTRACT.
3. ALL TRAFFIC SIGNAL SECTIONS AND PEDESTRIAN SIGNAL SECTIONS SHALL BE L.E.D. AND 12" (300 mm) DIAMETER. HEADS SHALL BE PLACED AS INDICATED ON THE TEMPORARY TRAFFIC SIGNAL PLAN OR AS DIRECTED BY THE ENGINEER. PEDESTRIAN SIGNALS SHALL USE SOLID INTERNATIONAL SYMBOLS. PEDESTRIAN SIGNALS WITH COUNTDOWN TIMERS SHALL BE USED WHEN THE EXISTING INSTALLATION UTILIZES COUNTDOWN TYPE OR AS DIRECTED BY THE ENGINEER. COUNTDOWN TYPE PEDESTRIAN SIGNALS ARE NOT TO BE INSTALLED AT A RAILROAD INTERSECTION. THE CONTRACTOR SHALL FURNISH ENOUGH CABLE SLACK TO RELOCATE HEADS TO ANY POSITION ON THE SPAN WIRE OR AT LOCATIONS ILLUSTRATED ON THE PLANS FOR CONSTRUCTION STAGING. THE TEMPORARY TRAFFIC SIGNAL SHALL REMAIN IN OPERATION DURING ALL SIGNAL HEAD RELOCATIONS. EACH TEMPORARY TRAFFIC SIGNAL HEAD SHALL HAVE ITS OWN CABLE FROM THE CONTROLLER CABINET TO THE SIGNAL HEAD.
4. ALL EXISTING STREET NAME AND INTERSECTION REGULATORY SIGNS SHALL BE REMOVED FROM EXISTING POLES, RELOCATED AND SECURELY FASTENED TO THE SPAN WIRE OR WOOD POLE AS DIRECTED BY THE ENGINEER.
5. ANY TEMPORARY SIGNAL WITHIN AN EXISTING CLOSED LOOP TRAFFIC SIGNAL SYSTEM SHALL BE INTERCONNECTED TO THAT SYSTEM USING SIMILAR BRAND CONTROL EQUIPMENT.
6. THE TEMPORARY TRAFFIC SIGNAL SHALL HAVE THE SIGNAL HEAD DISPLAYS, SIGNAL HEAD PLACEMENTS, AND CONTROLLER PHASING MATCH THE EXISTING TRAFFIC SIGNAL AT THE TIME OF THE TURN ON, IF NO TRAFFIC STAGING IS IN PLACE OR WILL NOT BE STAGED ON THE DAY OF THE TURN ON.

7. UNINTERRUPTIBLE POWER SUPPLY (UPS) SYSTEMS SHALL BE INSTALLED AND MADE OPERATIONAL AT TEMPORARY TRAFFIC SIGNAL INSTALLATIONS WHERE UPS IS INSTALLED AT THE EXISTING TRAFFIC SIGNAL, TEMPORARY TRAFFIC SIGNALS AT RAILROAD INTERSECTIONS, AND TEMPORARY TRAFFIC SIGNALS AT INTERSECTIONS WITH FIRE STATION ACTUATED EMERGENCY VEHICLE PRE-EMPTION, OR WHEN INDICATED ON THE PLANS.
8. TRAFFIC SIGNAL MANAGEMENT SYSTEMS SHALL BE MAINTAINED IN OPERATION AS INDICATED ON THE PLANS OR AS DIRECTED BY THE ENGINEER. REQUIRED EQUIPMENT SHALL BE AS SHOWN ON THE PLANS AND THE CONTRACTOR SHALL PLACE THE EQUIPMENT IN OPERATION TO THE SATISFACTION OF THE ENGINEER AND THE AGENCY RESPONSIBLE FOR THE TRAFFIC SIGNAL MANAGEMENT SYSTEM.
9. DETECTION AT TEMPORARY TRAFFIC SIGNALS SHALL BE INCLUDED FOR ALL APPROACHES OF THE INTERSECTION UNLESS INDICATED OTHERWISE ON THE PLANS. THE DETECTION SYSTEM MUST MEET THE SPECIFICATIONS OF DISTRICT 1 AND THE CONTRACTOR SHALL PLACE THE DETECTORS INTO OPERATION TO THE SATISFACTION OF THE ENGINEER.
10. WHEN PAN, TILT, ZOOM CAMERAS ARE INSTALLED AT THE EXISTING INTERSECTION OR ARE CALLED FOR IN THE PLANS, THE CONTRACTOR SHALL BE RESPONSIBLE FOR INSTALLING AND MAINTAINING THE CAMERAS TO THE SATISFACTION OF THE ENGINEER AND THE AGENCY RESPONSIBLE FOR THE CAMERAS.



NOTES FOR TEMPORARY TRAFFIC SIGNALS (CONTINUED)

11. THIS SIGNAL EQUIPMENT SHALL REMAIN BAGGED AND DISCONNECTED UNTIL THE BEGINNING OF M.O.T. STAGE III.
12. THE LEFT TURN INDICATIONS OF THESE SIGNAL HEADS SHALL BE BAGGED AND DISCONNECTED AT THE BEGINNING OF M.O.T. STAGE III.
13. THE TEMPORARY TRAFFIC SIGNAL SHALL BE TURNED OFF THROUGHOUT THE DURATION OF M.O.T. STAGE IIA (KLASEEN ROAD CLOSURE). ALL SIGNAL HEADS SHALL BE BAGGED OR REMOVED WHILE THE TEMPORARY TRAFFIC SIGNAL IS NOT IN OPERATION. THE TEMPORARY TRAFFIC SIGNAL SHALL BE TURNED ON UPON THE RE-OPENING OF KLASEEN ROAD. THIS WORK SHALL BE INCLUDED IN THE COST OF "TEMPORARY TRAFFIC SIGNAL INSTALLATION".
14. PORTABLE CHANGEABLE MESSAGE SIGNS SHALL BE PRESENT ON ALL APPROACHES OF THE INTERSECTION ALERTING DRIVERS TO THE CHANGES IN OPERATION OF THE TEMPORARY TRAFFIC SIGNAL. THE SIGNS SHALL BE IN OPERATION ONE WEEK IN ADVANCE OF THE TEMPORARY TRAFFIC SIGNAL TURN-OFF AND SHALL INCLUDE THE DATE ON WHICH THE TEMPORARY TRAFFIC SIGNAL SHALL BE TURNED OFF. FOLLOWING THE TURN-OFF OF THE TEMPORARY TRAFFIC SIGNAL, THE SIGNS SHALL DISPLAY A NEW MESSAGE THAT THE TEMPORARY TRAFFIC SIGNAL HAS BEEN TURNED OFF AND KLASEEN ROAD IS CLOSED TO THROUGH TRAFFIC.
15. ONE WEEK IN ADVANCE OF THE KLASEEN ROAD RE-OPENING, PORTABLE CHANGEABLE MESSAGE SIGNS SHALL DISPLAY A MESSAGE INCLUDING THE DATE ON WHICH THE TEMPORARY TRAFFIC SIGNAL WILL BE TURNED ON. FOLLOWING THE TURN-ON OF THE TEMPORARY TRAFFIC SIGNAL, THE SIGNS SHALL DISPLAY A NEW MESSAGE THAT THE TEMPORARY TRAFFIC SIGNAL IS TURNED ON AND KLASEEN ROAD IS OPEN TO TRAFFIC.

RESTORATION OF WORK AREA.
 RESTORATION OF THE TRAFFIC SIGNAL WORK AREA SHALL BE INCIDENTAL TO THE RELATED PAY ITEM SUCH AS FOUNDATION, CONDUIT, HANDHOLE, TRENCH AND BACKFILL, ETC., AND NO EXTRA COMPENSATION SHALL BE ALLOWED. ALL ROADWAY SURFACES SUCH AS SHOULDER, MEDIAN, SIDEWALKS, PAVEMENT, ETC. SHALL BE REPLACED IN KIND. ALL DAMAGE TO MOWED LAWNS SHALL BE REPLACED WITH AN APPROVED SALT TOLERANT SOD, AND ALL DAMAGE TO UNMOWED FIELDS SHALL BE SEEDED IN ACCORDANCE WITH STANDARD SPECIFICATIONS 252 AND 250 RESPECTIVELY.

NOTE:
 THE TRAFFIC SIGNAL CONTROLLER EQUIPMENT FOR THIS PROJECT SHALL BE "ECONOLITE" TO MATCH THE EXISTING ADJACENT SYSTEM.

FILE NAME = Y:\2278 Virginia Klaseen\cad\sheet\15-Tra	USER NAME = brd	DESIGNED - BRD	REVISED -	STATE OF ILLINOIS DEPARTMENT OF TRANSPORTATION	TEMPORARY TRAFFIC SIGNAL PLAN - M.O.T. STAGE III IL ROUTE 31 AT KLASEEN ROAD	F.A.U. RTE. 3887	SECTION 96-00209-01-PV	COUNTY MCHENRY	TOTAL SHEETS 271	SHEET NO. 134A	
PLOT SCALE = 28.0000' / in.	CHECKED - JJE	REVISOR - OJT	REVISOR -			SCALE: 1"=20'		SHEET NO. 1 OF 1 SHEETS		CONTRACT NO. 63553	
PLOT DATE = 12/7/2011	DATE - 10/24/11	REVISOR -	REVISOR -			STA. TO STA.		FED. ROAD DIST. NO. 1 ILLINOIS FED. AID PROJECT HPP-4064(003)			