

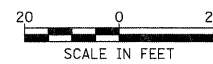
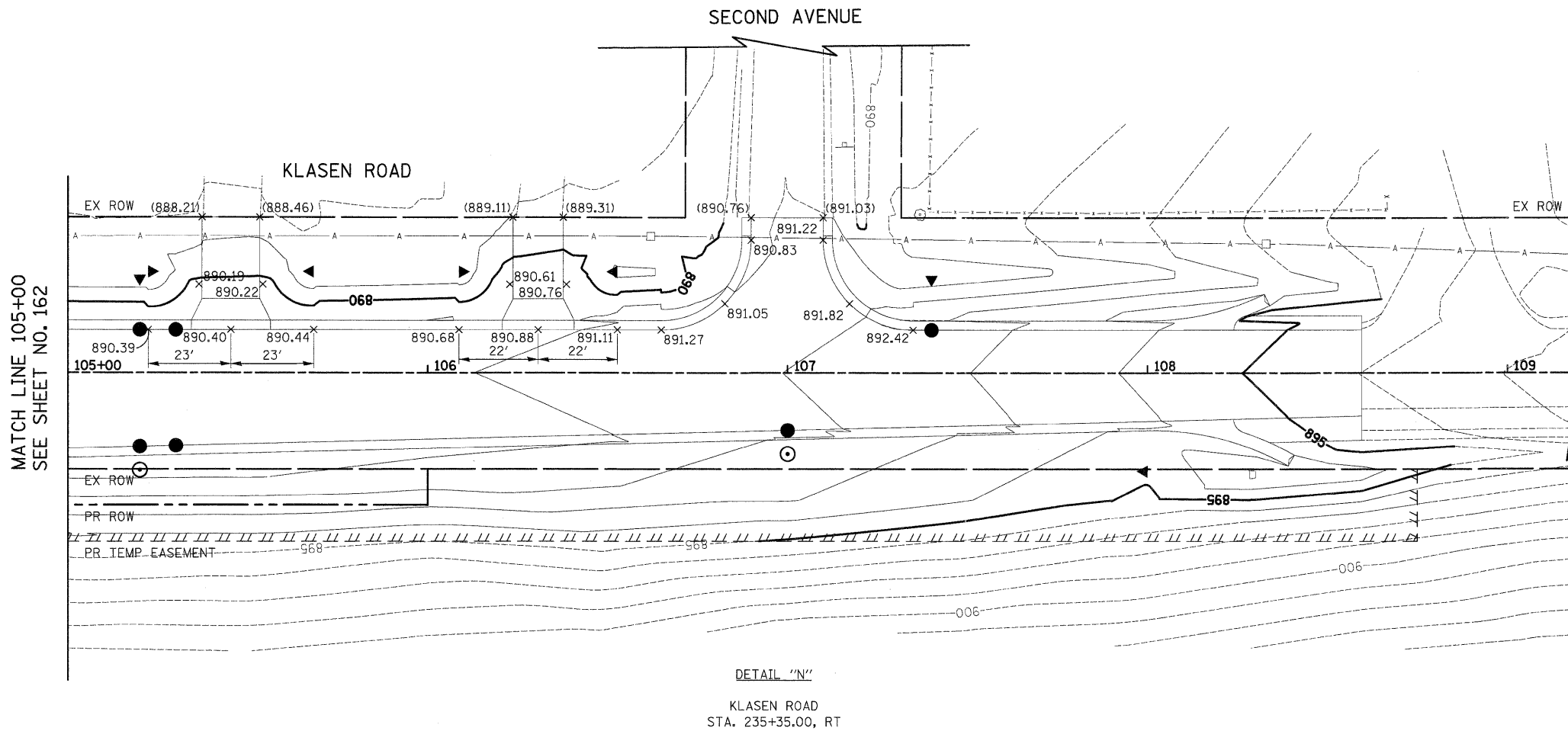
LEGEND

(XXX.XX) EXISTING PAVEMENT ELEVATION  
 XXX.XX PROPOSED PAVEMENT ELEVATION



PLAN	SURVEYED	DATE
	PLOTTED	
	CHECKED	
	BY	
	NOTE BOOK	
	NO.	
	FILE NAME	

PROFILE	SURVEYED	DATE
	PLOTTED	
	CHECKED	
	BY	
	NOTE BOOK	
	NO.	
	FILE NAME	



FILE NAME = Y:\2278 Virginia Klasen\oad\sheet\16-Detail	USER NAME = dta	DESIGNED - KWH	REVISED -	<b>STATE OF ILLINOIS DEPARTMENT OF TRANSPORTATION</b>	<b>GRADING DETAILS</b>			F.A.U. RTE. 3887	SECTION 96-00209-01-PV	COUNTY MCHENRY	TOTAL SHEETS 271	SHEET NO. 163
	a:\2278-aht-details_05.dgn	DRAWN - KWH	REVISED -		SCALE: 1" = 20'	SHEET NO. 6 OF 6 SHEETS	STA. 105+00 TO STA. 109+20	CONTRACT NO. 63553				
	PLOT SCALE = 20.0000' / in.	CHECKED - GAB	REVISED -		FED. ROAD DIST. NO. 1   ILLINOIS   FED. AID PROJECT HPP-40641003							
	PLOT DATE = 10/24/2011	DATE - 10/24/11	REVISED -									