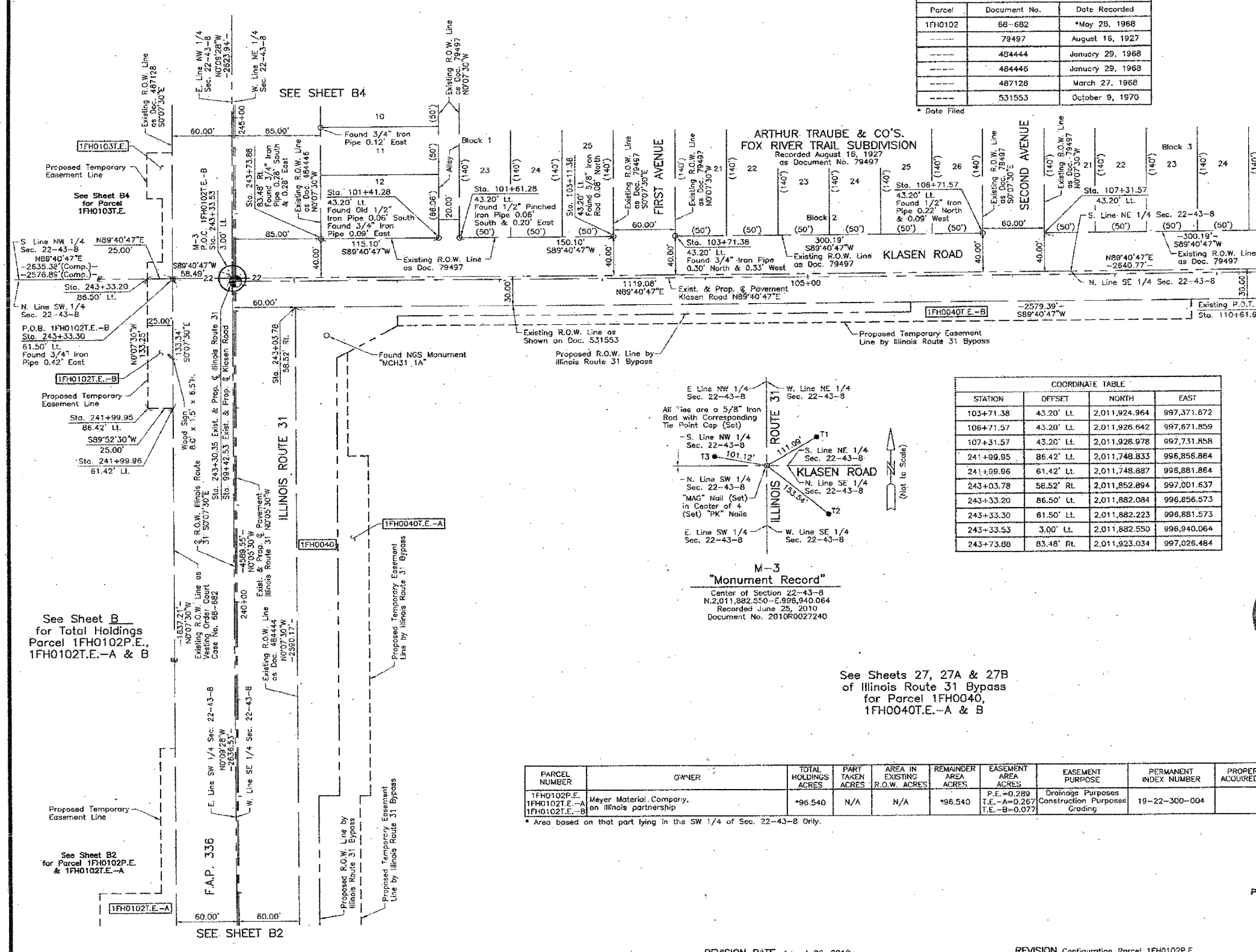
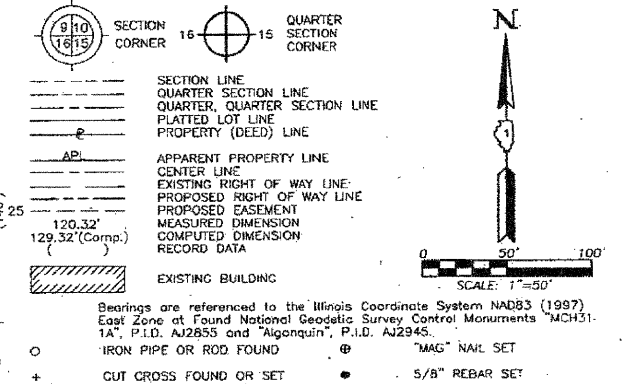


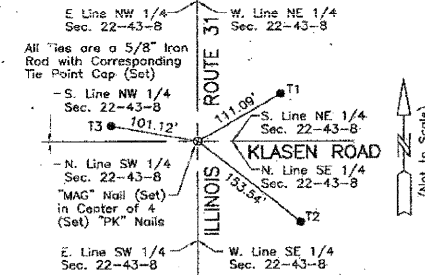
PART OF THE SOUTH 1/2 AND PART OF THE NORTH 1/2 OF SEC. 22, TWP. 43 N., R. 8 E. OF THE 3RD. P.M., IN McHENRY COUNTY, ILLINOIS.

Parcel	Document No.	Date Recorded
1FH0102	66-682	*May 28, 1968
---	79497	August 16, 1927
---	484444	January 29, 1968
---	484446	January 29, 1968
---	487128	March 27, 1968
---	531553	October 9, 1970

**LEGEND**



STATION	OFFSET	NORTH	EAST
103+71.38	43.20' LL	2,011,924.964	997,371.672
106+71.57	43.20' LL	2,011,926.642	997,671.859
107+31.57	43.20' LL	2,011,926.978	997,731.858
241+99.95	86.42' LL	2,011,748.833	996,856.864
241+99.96	61.42' LL	2,011,748.887	996,881.864
243+03.78	58.52' RL	2,011,852.894	997,001.637
243+33.20	86.50' LL	2,011,882.084	996,856.573
243+33.30	61.50' LL	2,011,882.223	996,881.573
243+33.53	3.00' LL	2,011,882.550	996,940.064
243+73.88	83.48' RL	2,011,923.034	997,026.484



**M-3 "Monument Record"**  
 Center of Section 22-43-8  
 N. 2,011,882,550 - E. 996,940.064  
 Recorded June 25, 2010  
 Document No. 2010R0027240

See Sheets 27, 27A & 27B of Illinois Route 31 Bypass for Parcel 1FH0040, 1FH0040T.E.-A & B

PARCEL NUMBER	OWNER	TOTAL HOLDINGS ACRES	PART TAKEN ACRES	AREA IN EXISTING R.O.W. ACRES	REMAINDER AREA ACRES	EASEMENT AREA ACRES	EASEMENT PURPOSE	PERMANENT INDEX NUMBER	PROPERTY ACQUIRED BY
1FH0102P.E., 1FH0102T.E.-A, 1FH0102T.E.-B	Meyer Material Company, an Illinois partnership	*96.540	N/A	N/A	*96.540	P.E.=0.289 T.E.-A=0.257 T.E.-B=0.077	Drainage Purposes Construction Purposes Grading	19-22-300-004	



**CHRISTIAN H. JORGENSEN, PRESIDENT**  
 ILLINOIS PROFESSIONAL LAND SURVEYOR NO. 35-2797  
 LICENSE EXPIRATION DATE: NOVEMBER 30, 2010  
 THIS PROFESSIONAL SERVICE CONFORMS TO THE CURRENT ILLINOIS MINIMUM STANDARDS FOR A BOUNDARY SURVEY.  
 COORDINATES ARE BASED ON THE PUBLISHED METRIC COORDINATE VALUES AT FOUND NATIONAL GEODETIC SURVEY CONTROL MONUMENT "MCH31 1A", P.I.D. A12855, OF N.613,205.182 - E.303,895.917.  
 NOTE: SURFACE COORDINATES ARE SHOWN.

STATION	OFFSET	NORTH	EAST
100+01.05	3.20' LL	2,011,882.894	997,001.572
101+41.28	43.20' LL	2,011,923.678	997,141.578
101+61.28	43.20' LL	2,011,923.790	997,161.578
103+11.38	43.20' LL	2,011,924.629	997,311.672

JORGENSEN & ASSOCIATES, INC.  
 120 PARK AVENUE  
 LAKE VILLA, ILLINOIS 60046  
 (847) 356-3371  
 SHEET 1 IS A COVER SHEET AND IS NOT RECORDED.

**PLAT OF HIGHWAYS**  
 STATE OF ILLINOIS  
 DEPARTMENT OF TRANSPORTATION  
 F.A.P. 336 (ILLINOIS ROUTE 31)  
 SECTION 96-00209-01-PV McHENRY COUNTY  
 PROJECT 99+42.53 TO STATION 110+61.61  
 STATION 237+00 TO STATION 245+00  
 SCALE: 1"=50' SHEET B3 OF

**BUREAU OF LAND ACQUISITION**  
 201 WEST CENTER COURT  
 SCHAMBURG, ILLINOIS 60196

RECEIVED  
 OCT 12 2010  
 PLATS & LEGALS

ROUTE F.A.P. 336 (ILLINOIS ROUTE 31) SECTION 96-00209-01-PV COUNTY McHENRY JOB NO. R-91-022-03 REVISION DATE August 26, 2010 REVISION Configuration Parcel 1FH0102P.E. MADE BY RECORDING: RECORDED ON AS DOCUMENT NO.