

F.A. RTE.	SECTION	COUNTY	TOTAL SHEETS	SHEET NO.
367	07-00154-11-TL	WILL	70	1
FED. ROAD DIST. NO.		ILLINOIS	CONTRACT NO. 63597	

FOR INDEX OF SHEETS, SEE SHEET NO. 2
 FOR LIST OF HIGHWAY STANDARDS, SEE SHEET NO. 2

TRAFFIC DATA
 DESIGN DESIGNATION:
 C.H. 52 (GOUGAR ROAD) = MINOR ARTERIAL (URBAN)
 U.S. ROUTE 30 = OTHER PRINCIPAL ARTERIAL

ADT:
 C.H. 52 (GOUGAR ROAD) = 11,048 (2014)
 PV = 91.6% SU = 5.2% MU = 3.2%

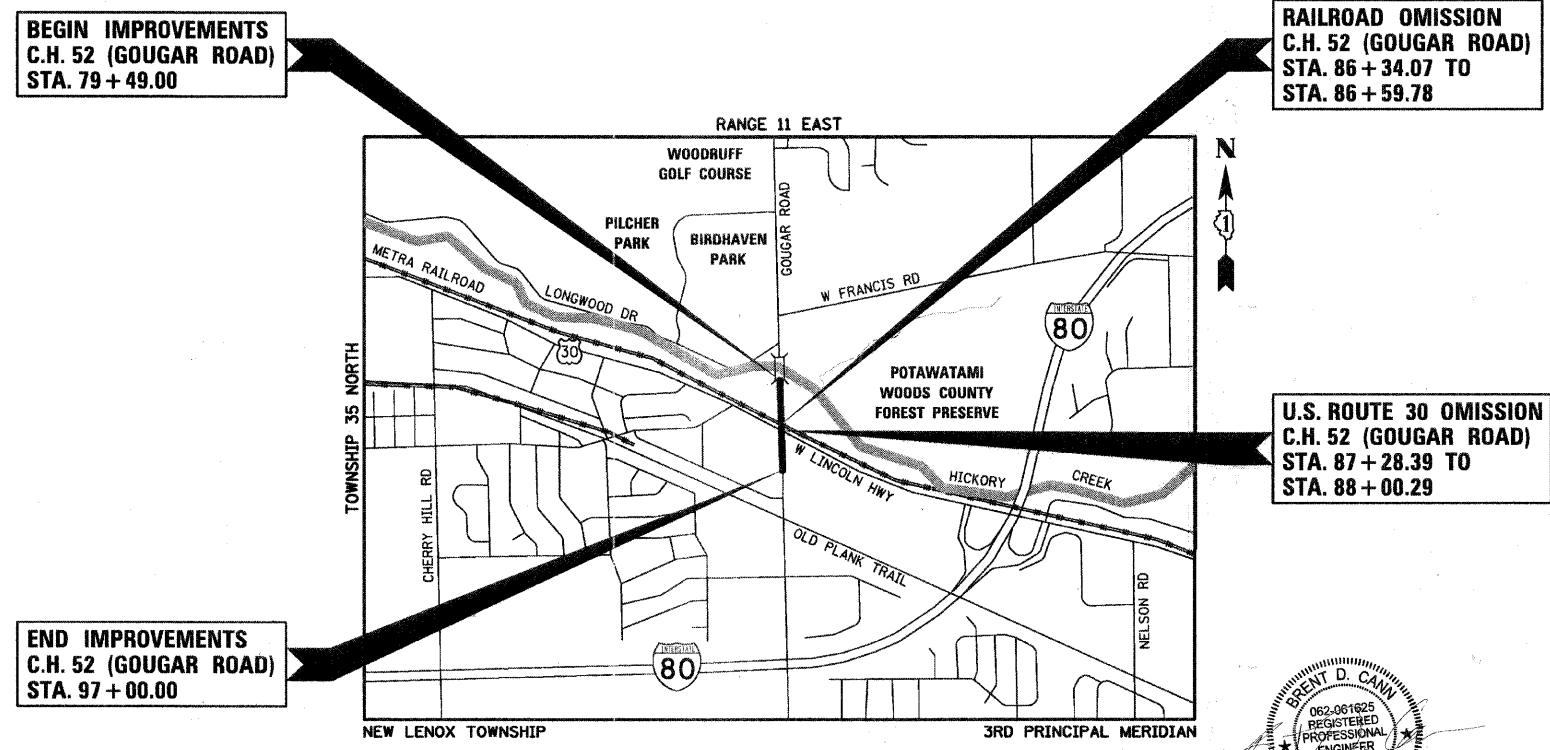
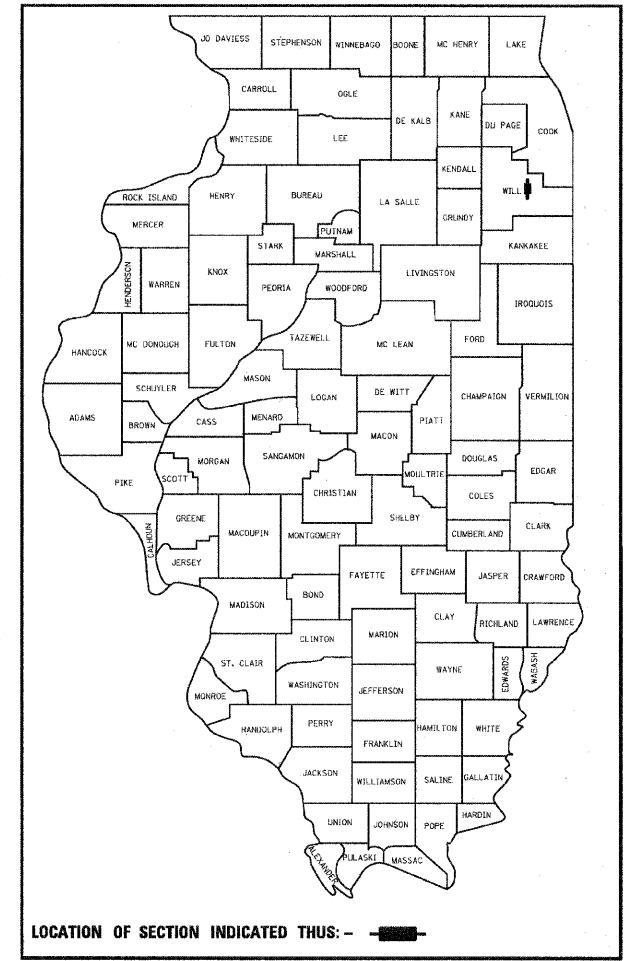
U.S. ROUTE 30 = 22,722 (2014)
 PV = 92.5% SU = 4.5% MU = 3.0%

DESIGN SPEED:
 C.H. 52 (GOUGAR ROAD) (NORTH LEG) = 50 MPH
 C.H. 52 (GOUGAR ROAD) (SOUTH LEG) = 45 MPH
 U.S. ROUTE 30 (WEST LEG) = 50 MPH
 U.S. ROUTE 30 (EAST LEG) = 45 MPH

POSTED SPEED:
 C.H. 52 (GOUGAR ROAD) (NORTH LEG) = 45 MPH
 C.H. 52 (GOUGAR ROAD) (SOUTH LEG) = 40 MPH
 U.S. ROUTE 30 (WEST LEG) = 45 MPH
 U.S. ROUTE 30 (EAST LEG) = 40 MPH

STATE OF ILLINOIS
 DEPARTMENT OF TRANSPORTATION
 DIVISION OF HIGHWAYS
**PLANS FOR PROPOSED
 FEDERAL AID HIGHWAY**

FAU ROUTE 367 / C.H. 52 (GOUGAR ROAD) AT
 U.S. ROUTE 30
 INTERSECTION IMPROVEMENTS
 SECTION NO. 07-00154-11-TL
 PROJECT NO.: CMM-9003(530)
 WILL COUNTY
 JOB NO.: C-91-189-10



END IMPROVEMENTS
 C.H. 52 (GOUGAR ROAD)
 STA. 97 + 00.00

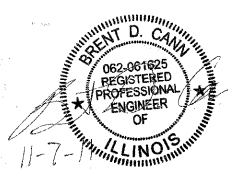
BEGIN IMPROVEMENTS
 C.H. 52 (GOUGAR ROAD)
 STA. 79 + 49.00

RAILROAD OMISSION
 C.H. 52 (GOUGAR ROAD)
 STA. 86 + 34.07 TO
 STA. 86 + 59.78

U.S. ROUTE 30 OMISSION
 C.H. 52 (GOUGAR ROAD)
 STA. 87 + 28.39 TO
 STA. 88 + 00.29

LOCATION MAP
 SCALE : N.T.S.

PROJECT GROSS AND NET LENGTH:
 GROSS LENGTH = C.H. 52 (GOUGAR ROAD) = 1,751 FEET (0.33 MILES)
 NET LENGTH = C.H. 52 (GOUGAR ROAD) = 1,653 FEET (0.31 MILES)
 RAILROAD OMISSION = 25.71 FEET
 U.S. ROUTE 30 OMISSION = 71.90 FEET



BRENT D. CANN, P.E.
 NO. 062-061625
 EXPIRES: 11/30/11
 HR GREEN

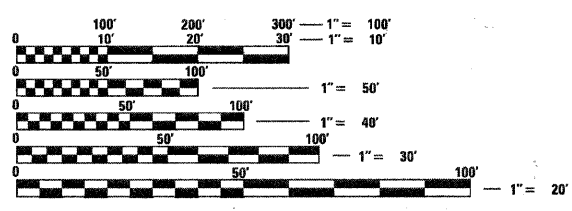
STATE OF ILLINOIS
 DEPARTMENT OF TRANSPORTATION
 DIVISION OF HIGHWAYS

APPROVED NOVEMBER 7TH 20 11
W. D. Smith
 WILL COUNTY ENGINEER

PASSED NOVEMBER 8 20 11
CHolt CHRISTOPHER HOLT
 DISTRICT 1 ENGINEER OF LOCAL ROADS & STREETS

RELEASING FOR BID
 BASED ON LIMITED
 REVIEW NOVEMBER 9, 20 11
Diane M. O'Keefe
 DEPUTY DIRECTOR OF HIGHWAYS, REGION 1 ENGINEER

PRINTED BY THE AUTHORITY
 OF THE STATE OF ILLINOIS



FULL SIZE PLANS HAVE BEEN PREPARED USING STANDARD ENGINEERING SCALES. REDUCED SIZED PLANS WILL NOT CONFORM TO STANDARD SCALES. IN MAKING MEASUREMENTS ON REDUCED PLANS, THE ABOVE SCALES MAY BE USED.

J.U.L.I.E.
 JOINT UTILITY LOCATION INFORMATION FOR EXCAVATION
 1-800-892-0123
 OR 811

CONTRACT NO. 63597

PROGRAM AND OFFICE ENGINEER: CHARLES F. RIDDLE, P.E. (847)705-4406 SCHAUMBURG, ILLINOIS