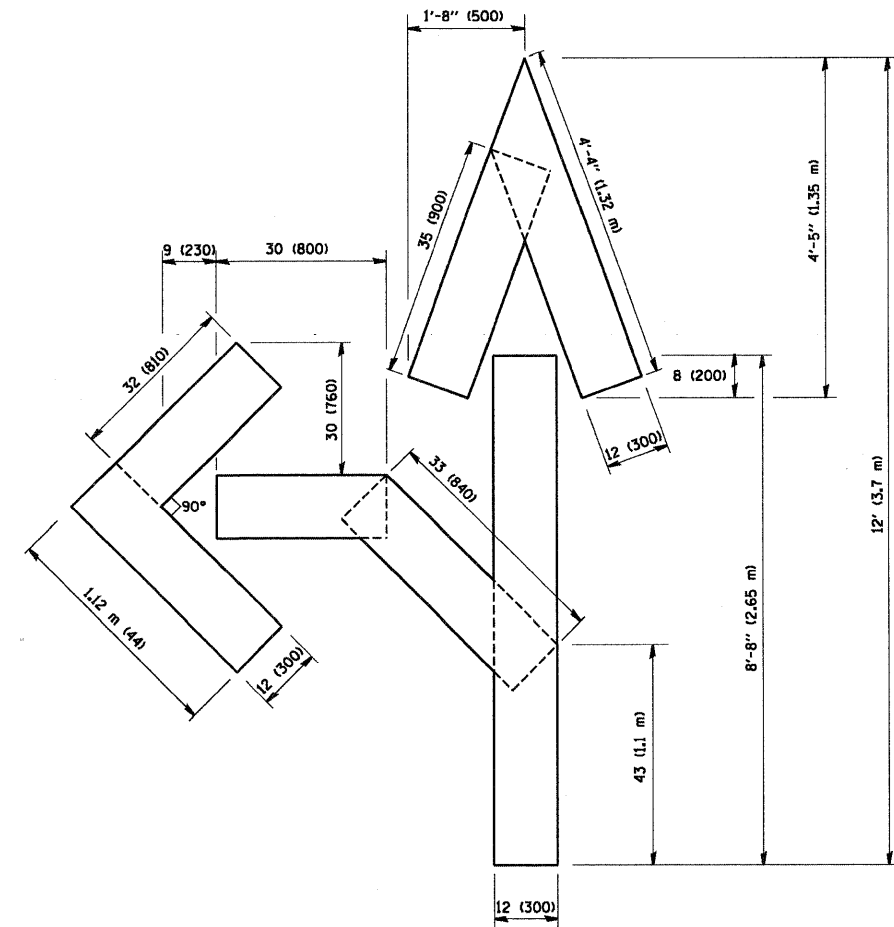
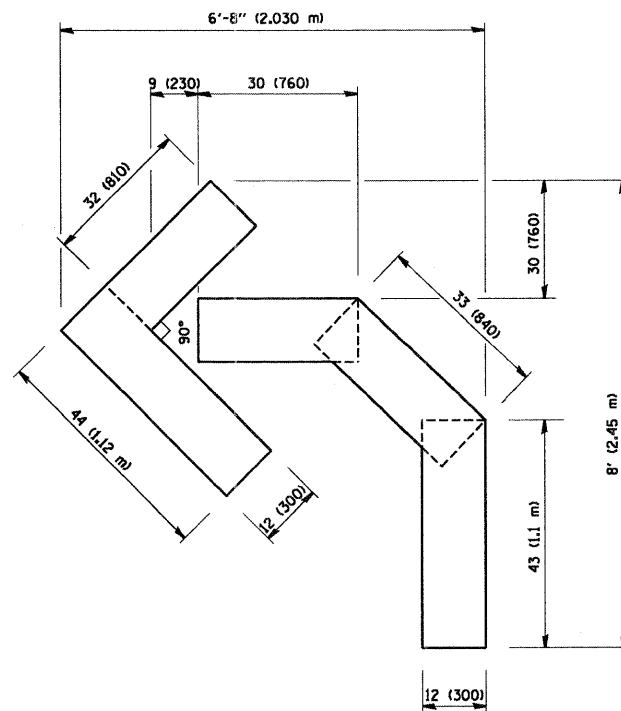


QUANTITY  
 4 (100) LINE = 64.1 ft. (19.7 m)  
 21.1 sq. ft. (1.97 sq. m)



QUANTITY  
 4 (100) LINE = 82.5 ft. (25.3 m)  
 27.5 sq. ft. (2.53 sq. m)



QUANTITY  
 4 (100) LINE = 45.5 ft. (13.9 m)  
 15.2 sq. ft. (1.39 sq. m)

All dimensions are in inches (millimeters) unless otherwise shown.

PROJECT: COUNTY OF WILL CO. ILL. PAV. MARKING LETTERS AND SYMBOLS FOR TRAFFIC STAGING  
 FILENAME: W070007.DWG  
 SEC. PROJ. NO. 070007  
 11/17/2001 10:30:25 AM

FILE NAME = W:\diststd\22x34\td16.dgn	USER NAME = goglianobt	DESIGNED - DRAWN - CHECKED - DATE - 09-18-94	REVISED - T. RAMMACHER 06-05-96 REVISED - T. RAMMACHER 11-04-97 REVISED - T. RAMMACHER 03-02-98 REVISED - E. GOMEZ 08-28-00
--	------------------------	---	--

**STATE OF ILLINOIS  
 DEPARTMENT OF TRANSPORTATION**

PAVEMENT MARKING LETTERS AND SYMBOLS FOR TRAFFIC STAGING			
SCALE: NONE	SHEET NO. 1 OF 1 SHEETS	STA.	TO STA.

F.A. RTE.	SECTION	COUNTY	TOTAL SHEETS	SHEET NO.
367	07-00154-11-TL	WILL	70	58
TC-16			CONTRACT NO. 63597	
FED. ROAD DIST. NO. 1 ILLINOIS FED. AID PROJECT				