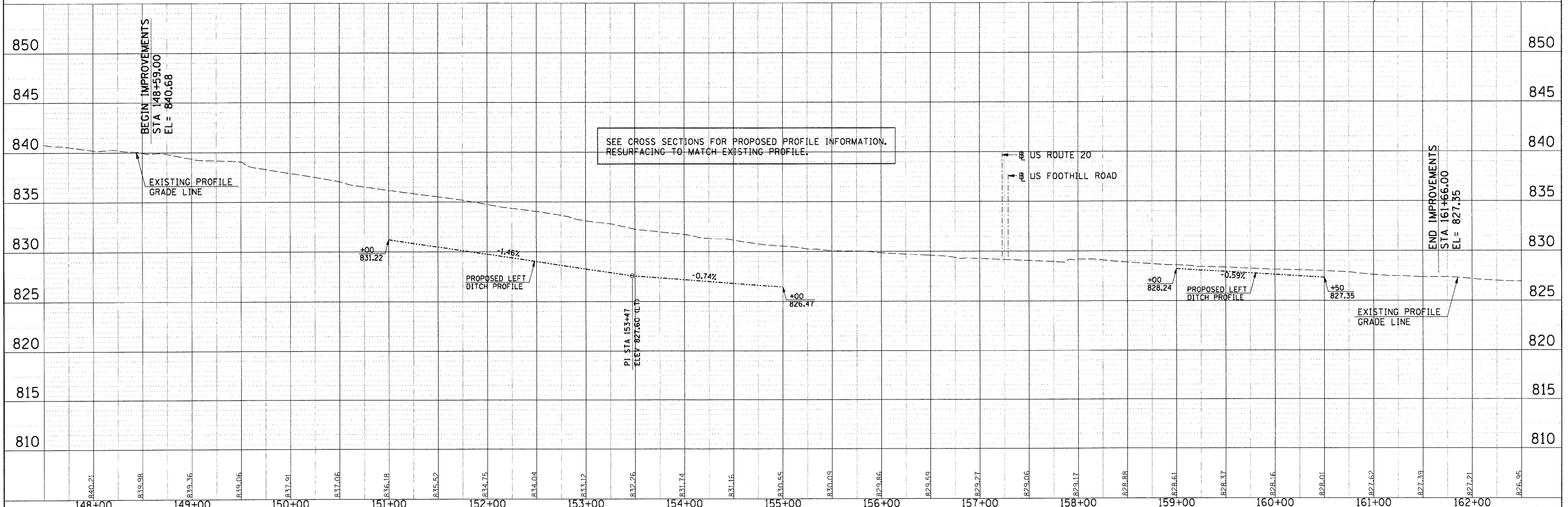
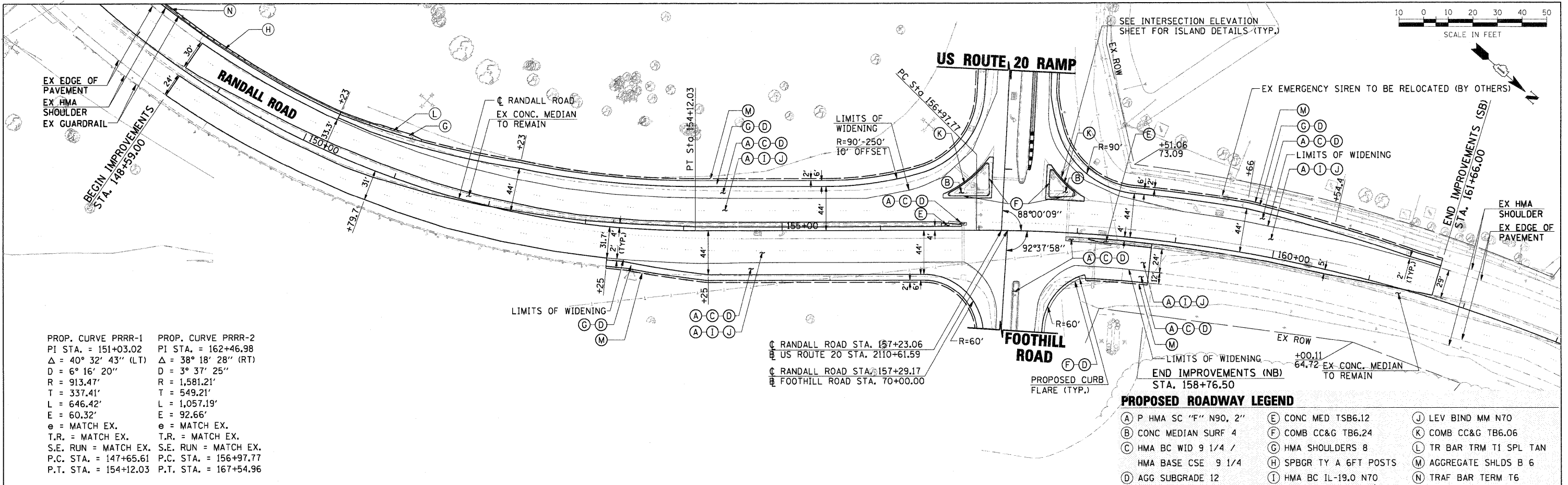


PLAN	SURVEYED	DATE
	ALIGNED	
	CHECKED	
	BY	
	NO.	

PROFILE	SURVEYED	DATE
	GRADES	
	NOTED	
	BY	
	NO.	



FILE NAME = D1157207-SHT-PLAN-01.DGN	USER NAME = malopez	DESIGNED - ML	REVISED -	STATE OF ILLINOIS DEPARTMENT OF TRANSPORTATION	RANDALL ROAD AT US ROUTE 20 (FOOTHILL ROAD) PROPOSED PLAN AND PROFILE	F.A.P. RTE. 336	SECTION 06-00345-00-CH	COUNTY KANE	TOTAL SHEETS 92	SHEET NO. 17	
PLOT SCALE = *SCALE*	CHECKED - DW	REVISED -	REVISED -			CONTRACT NO. 63623					
PLOT DATE = 10/24/2011	DATE - 04-04-11	REVISED -	REVISED -			FED. ROAD DIST. NO. 1 ILLINOIS FED. AID PROJECT					
SCALE: 50'=1'		SHEET NO. 1 OF 4 SHEETS				STA. TO STA.					