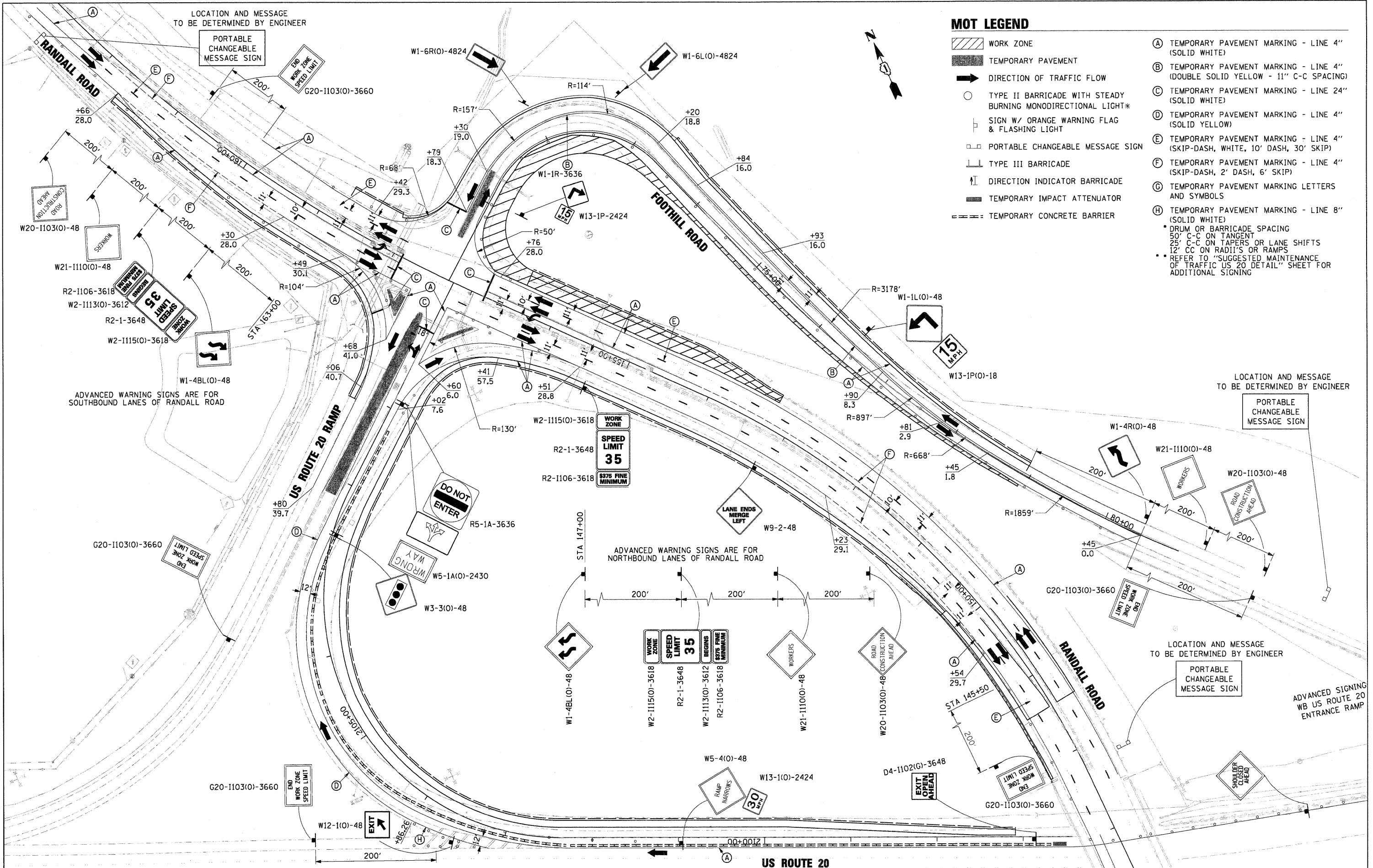


DATE	
BY	
APPROVED	
ALIGNED	
CHECKED	
NO. OF SHEETS	
NO. OF SHEETS CHECKED	
PLANNING	
NOTE BOOK	
NO.	

DATE	
BY	
APPROVED	
ALIGNED	
CHECKED	
NO. OF SHEETS	
NO. OF SHEETS CHECKED	
PLANNING	
NOTE BOOK	
NO.	



MOT LEGEND

- WORK ZONE
 - TEMPORARY PAVEMENT
 - DIRECTION OF TRAFFIC FLOW
 - TYPE II BARRICADE WITH STEADY BURNING MONODIRECTIONAL LIGHT*
 - SIGN W/ ORANGE WARNING FLAG & FLASHING LIGHT
 - PORTABLE CHANGEABLE MESSAGE SIGN
 - TYPE III BARRICADE
 - DIRECTION INDICATOR BARRICADE
 - TEMPORARY IMPACT ATTENUATOR
 - TEMPORARY CONCRETE BARRIER
- (A) TEMPORARY PAVEMENT MARKING - LINE 4" (SOLID WHITE)
 - (B) TEMPORARY PAVEMENT MARKING - LINE 4" (DOUBLE SOLID YELLOW - 11" C-C SPACING)
 - (C) TEMPORARY PAVEMENT MARKING - LINE 24" (SOLID WHITE)
 - (D) TEMPORARY PAVEMENT MARKING - LINE 4" (SOLID YELLOW)
 - (E) TEMPORARY PAVEMENT MARKING - LINE 4" (SKIP-DASH, WHITE, 10' DASH, 30' SKIP)
 - (F) TEMPORARY PAVEMENT MARKING - LINE 4" (SKIP-DASH, 2' DASH, 6' SKIP)
 - (G) TEMPORARY PAVEMENT MARKING LETTERS AND SYMBOLS
 - (H) TEMPORARY PAVEMENT MARKING - LINE 8" (SOLID WHITE)
- * DRUM OR BARRICADE SPACING
 50' C-C ON TANGENT
 25' C-C ON TAPERS OR LANE SHIFTS
 12' C-C ON RADII'S OR RAMP
 ** REFER TO "SUGGESTED MAINTENANCE OF TRAFFIC US 20 DETAIL" SHEET FOR ADDITIONAL SIGNING

FILE NAME = D:\157287-SHT-MOT-01A.DGN	USER NAME = molopez	DESIGNED - DW	REVISED -	STATE OF ILLINOIS DEPARTMENT OF TRANSPORTATION	RANDALL ROAD AT US ROUTE 20 (FOOTHILL ROAD) SUGGESTED MAINTENANCE OF TRAFFIC STAGE 1A PLANS			F.A.P. R.T.E. 336	SECTION 06-00345-00-CH	COUNTY KANE	TOTAL SHEETS 92	SHEET NO. 23
	PLOT SCALE = 1/8"=1'-0"	DRAWN - BH	REVISED -		SCALE: 50'-1'	SHEET NO. 2 OF 4 SHEETS	STA. TO STA.	CONTRACT NO. 63623				
	PLOT DATE = 10/24/2011	CHECKED - JC	REVISED -		FED. ROAD DIST. NO. 1 ILLINOIS FED. AID PROJECT							
		DATE - 04-29-11	REVISED -									