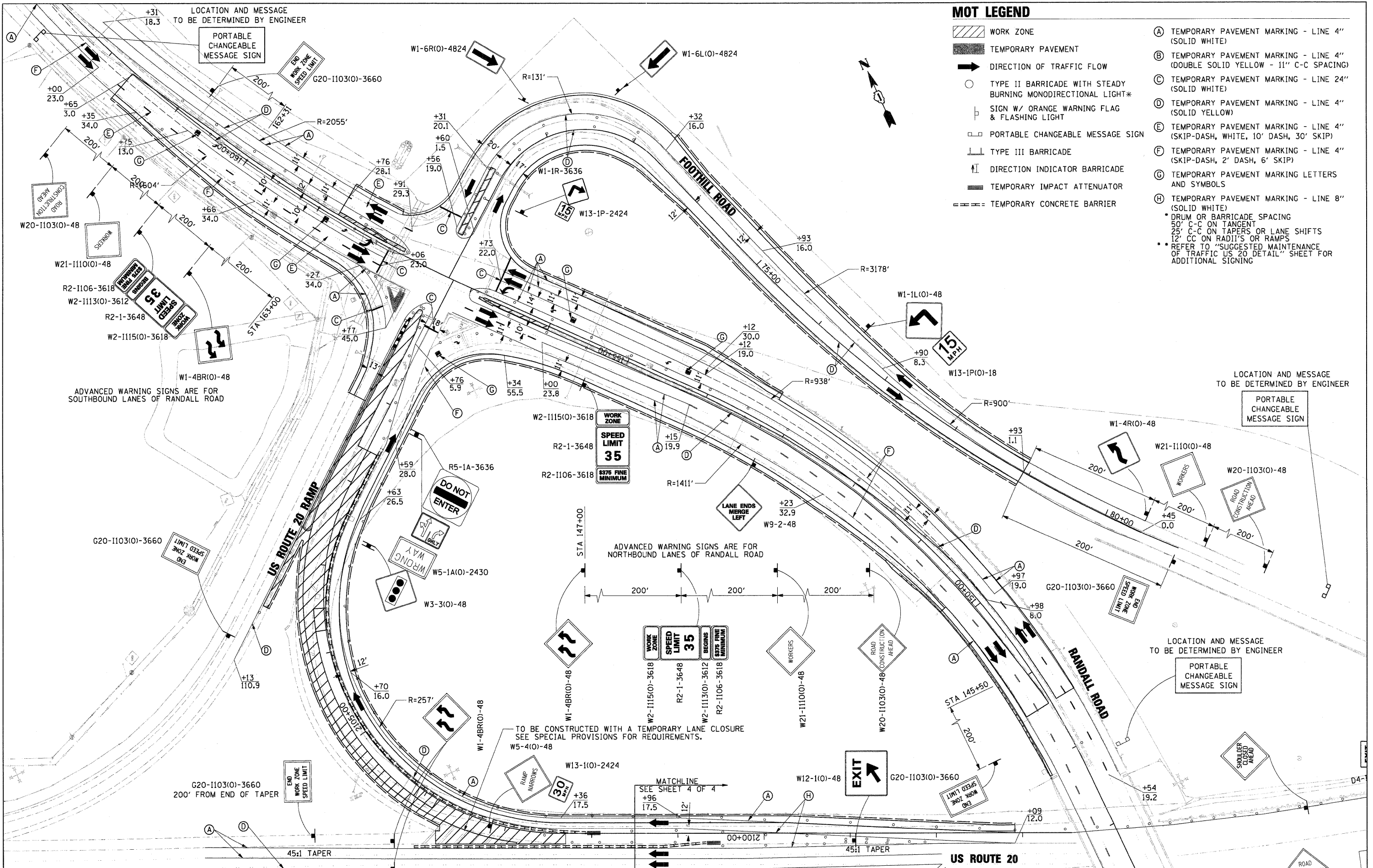


DATE	
BY	
REVISIONS	
NO.	
DESCRIPTION	
DATE	
BY	
APPROVED	
DATE	
BY	
DATE	
BY	
DATE	

DATE	
BY	
REVISIONS	
NO.	
DESCRIPTION	
DATE	
BY	
APPROVED	
DATE	
BY	
DATE	
BY	
DATE	



MOT LEGEND

- WORK ZONE
 - TEMPORARY PAVEMENT
 - DIRECTION OF TRAFFIC FLOW
 - TYPE II BARRICADE WITH STEADY BURNING MONODIRECTIONAL LIGHT*
 - SIGN W/ ORANGE WARNING FLAG & FLASHING LIGHT
 - PORTABLE CHANGEABLE MESSAGE SIGN
 - TYPE III BARRICADE
 - DIRECTION INDICATOR BARRICADE
 - TEMPORARY IMPACT ATTENUATOR
 - TEMPORARY CONCRETE BARRIER
- (A) TEMPORARY PAVEMENT MARKING - LINE 4" (SOLID WHITE)
 - (B) TEMPORARY PAVEMENT MARKING - LINE 4" (DOUBLE SOLID YELLOW - 11" C-C SPACING)
 - (C) TEMPORARY PAVEMENT MARKING - LINE 24" (SOLID WHITE)
 - (D) TEMPORARY PAVEMENT MARKING - LINE 4" (SOLID YELLOW)
 - (E) TEMPORARY PAVEMENT MARKING - LINE 4" (SKIP-DASH, WHITE, 10' DASH, 30' SKIP)
 - (F) TEMPORARY PAVEMENT MARKING - LINE 4" (SKIP-DASH, 2' DASH, 6' SKIP)
 - (G) TEMPORARY PAVEMENT MARKING LETTERS AND SYMBOLS
 - (H) TEMPORARY PAVEMENT MARKING - LINE 8" (SOLID WHITE)
 - DRUM OR BARRICADE SPACING
 - 50' C-C ON TANGENT
 - 25' C-C ON TAPERS OR LANE SHIFTS
 - 12' CC ON RADII'S OR RAMP
 - REFER TO "SUGGESTED MAINTENANCE OF TRAFFIC US 20 DETAIL" SHEET FOR ADDITIONAL SIGNING

FILE NAME = D1157287-SHT-MOT-02.DGN	USER NAME = mlopez	DESIGNED - DW	REVISED -	STATE OF ILLINOIS	RANDALL ROAD AT US ROUTE 20 (FOOTHILL ROAD)	F.A.P. RTE. 336	SECTION 06-00345-00-CH	COUNTY KANE	TOTAL SHEETS 92	SHEET NO. 24	
DRAWN - BH				DEPARTMENT OF TRANSPORTATION				SUGGESTED MAINTENANCE OF TRAFFIC STAGE 2 PLANS			
CHECKED - JC				SCALE: 50'-1"				SHEET NO. 3 OF 4 SHEETS			
DATE - 04-29-11				STA. TO STA.				CONTRACT NO. 63623			
FED. ROAD DIST. NO. 1 ILLINOIS FED. AID PROJECT											