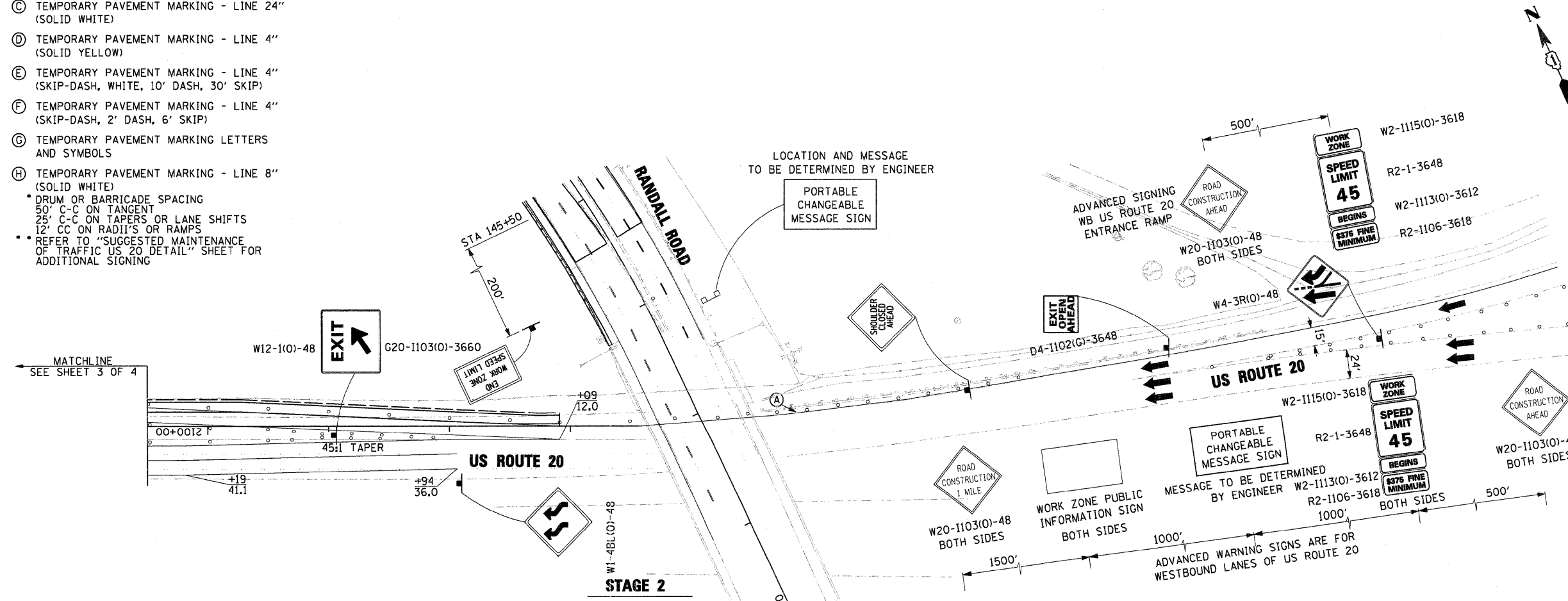
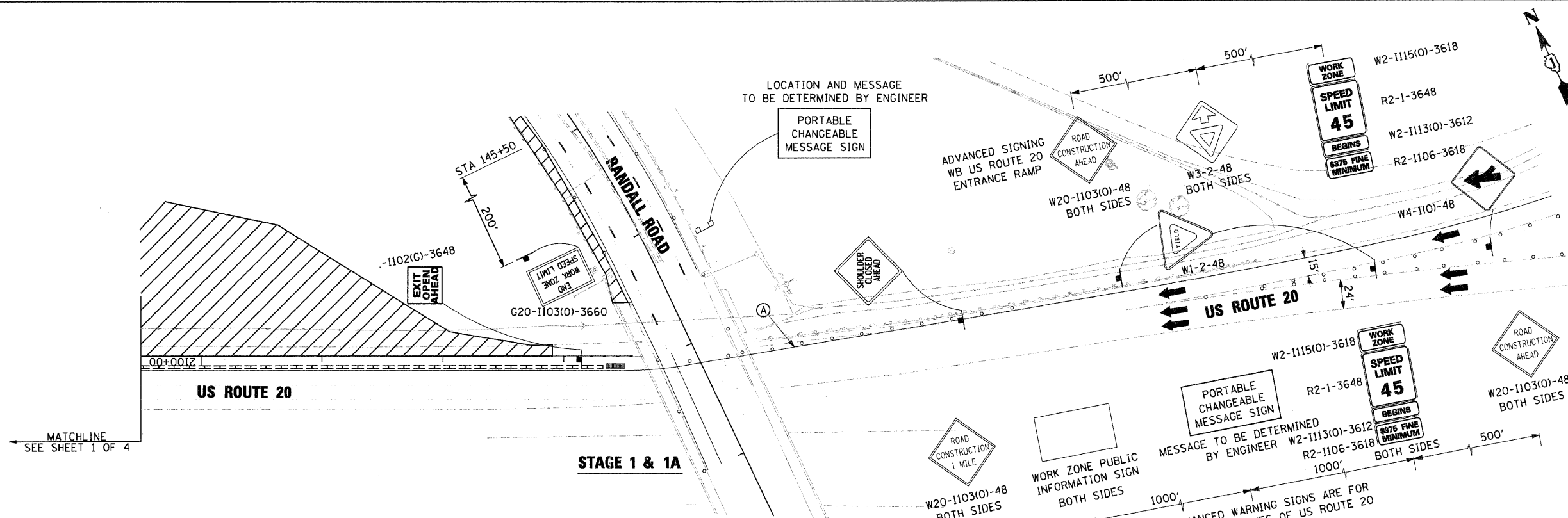


DATE	
BY	
SURVEYED	
ALIGNED	
CHECKED	
PLANNED	
NO.	

DATE	
BY	
SURVEYED	
GRADES	
CHECKED	
PLANNED	
NO.	

**MOT LEGEND**

- WORK ZONE
- TEMPORARY PAVEMENT
- DIRECTION OF TRAFFIC FLOW
- TYPE II BARRICADE WITH STEADY BURNING MONODIRECTIONAL LIGHT\*
- SIGN W/ ORANGE WARNING FLAG & FLASHING LIGHT
- PORTABLE CHANGEABLE MESSAGE SIGN
- TYPE III BARRICADE
- DIRECTION INDICATOR BARRICADE
- TEMPORARY IMPACT ATTENUATOR
- TEMPORARY CONCRETE BARRIER
- (A) TEMPORARY PAVEMENT MARKING - LINE 4" (SOLID WHITE)
- (B) TEMPORARY PAVEMENT MARKING - LINE 4" (DOUBLE SOLID YELLOW - 11" C-C SPACING)
- (C) TEMPORARY PAVEMENT MARKING - LINE 24" (SOLID WHITE)
- (D) TEMPORARY PAVEMENT MARKING - LINE 4" (SOLID YELLOW)
- (E) TEMPORARY PAVEMENT MARKING - LINE 4" (SKIP-DASH, WHITE, 10' DASH, 30' SKIP)
- (F) TEMPORARY PAVEMENT MARKING - LINE 4" (SKIP-DASH, 2' DASH, 6' SKIP)
- (G) TEMPORARY PAVEMENT MARKING LETTERS AND SYMBOLS
- (H) TEMPORARY PAVEMENT MARKING - LINE 8" (SOLID WHITE)
  - \* DRUM OR BARRICADE SPACING
  - 50' C-C ON TANGENT
  - 25' C-C ON TAPERS OR LANE SHIFTS
  - 12' CC ON RADII'S OR RAMP
  - \* REFER TO "SUGGESTED MAINTENANCE OF TRAFFIC US 20 DETAIL" SHEET FOR ADDITIONAL SIGNING



FILE NAME =	01157287-SHT-M01-03.DGN
USER NAME =	melopez
DESIGNED -	DW
REVISOR -	
DRAWN -	BH
REVISOR -	
CHECKED -	JC
REVISOR -	
DATE -	04-29-11
REVISOR -	

PLLOT SCALE =	SCALE*
PLLOT DATE =	10/24/2011

**STATE OF ILLINOIS  
DEPARTMENT OF TRANSPORTATION**

**RANDALL ROAD AT US ROUTE 20 (FOOTHILL ROAD)  
SUGGESTED MAINTENANCE OF TRAFFIC US 20 DETAIL**

SCALE: 50'-1"    SHEET NO. 4 OF 4 SHEETS    STA.    TO STA.

F.A.P. RTE.	SECTION	COUNTY	TOTAL SHEETS	SHEET NO.
336	06-00345-00-CH	KANE	92	25
FED. ROAD DIST. NO. 1 ILLINOIS FED. AID PROJECT			CONTRACT NO. 63623	