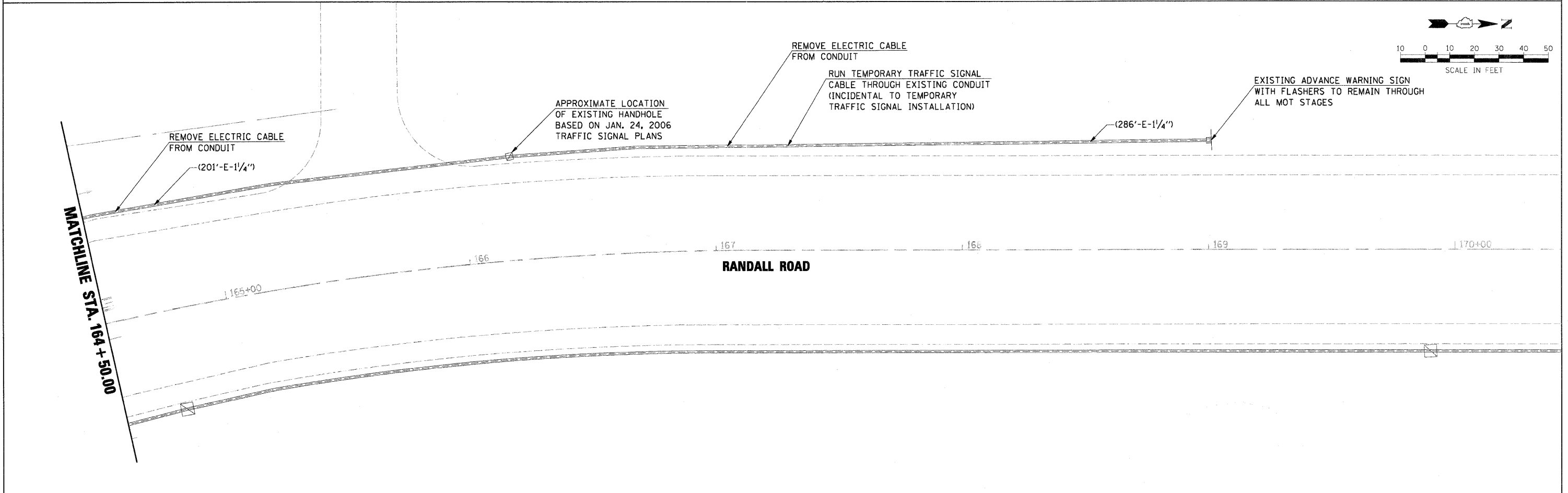
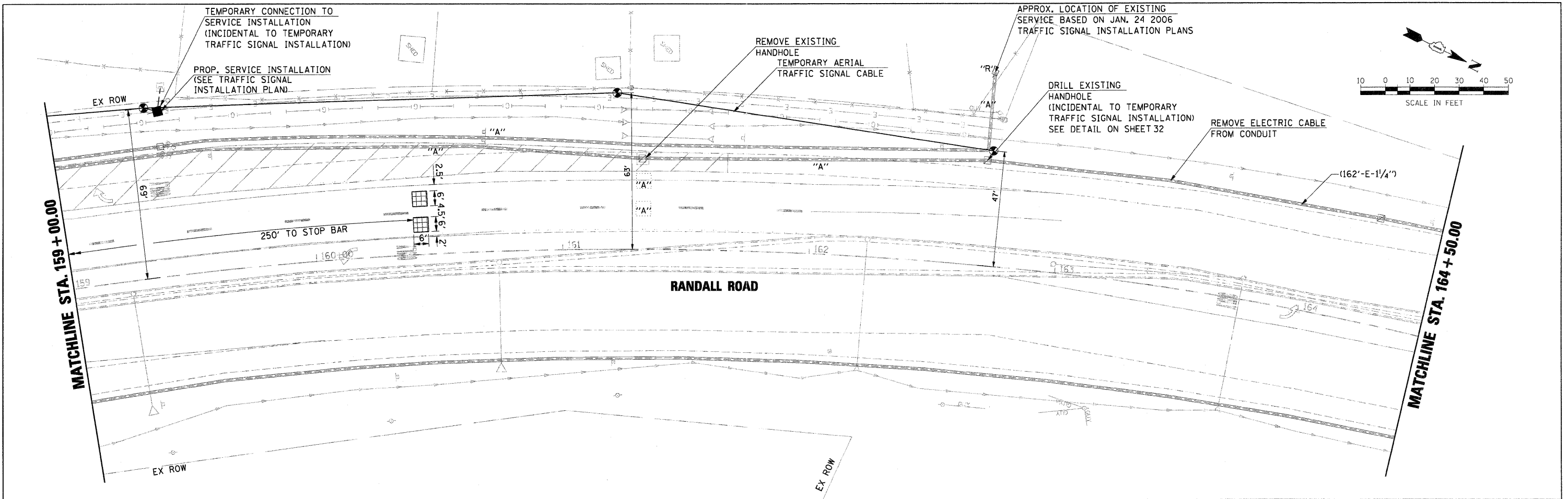


DATE	
BY	
SURVEYED	CHECKED
ALIGNMENT	CHECKED
PLAN	CHECKED
NOTE BOOK	CHECKED
NO.	

DATE	
BY	
SURVEYED	CHECKED
GRADES	CHECKED
PROFILE	CHECKED
NOTE BOOK	CHECKED
NO.	



FILE NAME = 01157207-SHT-TS02A-TPLAN01.DGN	USER NAME = molopez	DESIGNED - BH	REVISED -	STATE OF ILLINOIS DEPARTMENT OF TRANSPORTATION	TEMPORARY TRAFFIC SIGNAL INSTALLATION AND REMOVE EXISTING TRAFFIC SIGNAL EQUIPMENT PLAN - STAGE 1 RANDALL RD AT US RTE 20 WB OFF RAMP (FOOTHILL RD)	F.A.P. RTE. 336	SECTION 06-00345-00-CH	COUNTY KANE	TOTAL SHEETS 92	SHEET NO. 32A	
PLOT SCALE = SCALE	CHECKED - DWW	REVISED -	SCALE:			SHEET NO. OF SHEETS	STA. TO STA.	CONTRACT NO. 63623			
PLOT DATE = 11/29/2011	DATE - 05-09-2011	REVISED -	FED. ROAD DIST. NO. 1 ILLINOIS FED. AID PROJECT								