

DATE	
BY	
REVISION	
NO.	
DATE	
BY	
REVISION	
NO.	
DATE	
BY	
REVISION	
NO.	

DATE	
BY	
REVISION	
NO.	
DATE	
BY	
REVISION	
NO.	
DATE	
BY	
REVISION	
NO.	

**EXISTING EMERGENCY VEHICLE PREEMPTION SEQUENCE**

EXISTING EMERGENCY VEHICLE PREEMPTORS				
EMERGENCY VEHICLE PREEMPTORS	3	4	5	
MOVEMENT	←	←	↑	↑

**PROPOSED EMERGENCY VEHICLE PREEMPTION SEQUENCE**

PROPOSED EMERGENCY VEHICLE PREEMPTORS					
EMERGENCY VEHICLE PREEMPTORS	3	4	5	6	
MOVEMENT	←	↓	←	↑	↑

I.D.O.T TRAFFIC SIGNAL INSTALLATION ELECTRICAL SERVICE REQUIREMENTS					TOTAL WATTAGE
TYPE	NO. LAMPS	WATTAGE		% OPERATION	
		INCAND.	LED		
SIGNAL (RED)	18		17	0.50	153
(YELLOW)	18		25	0.25	112.5
(GREEN)	18		15	0.25	67.5
ARROW	4		12	0.10	4.8
CONT. RIGHT ARROW	2		15	1.00	30
CONTROLLER	1		100	1.00	100
UPS	1		25	1.00	25
TOTAL =					490.1

ENERGY COSTS TO: KANE COUNTY  
ST. CHARLES, ILLINOIS

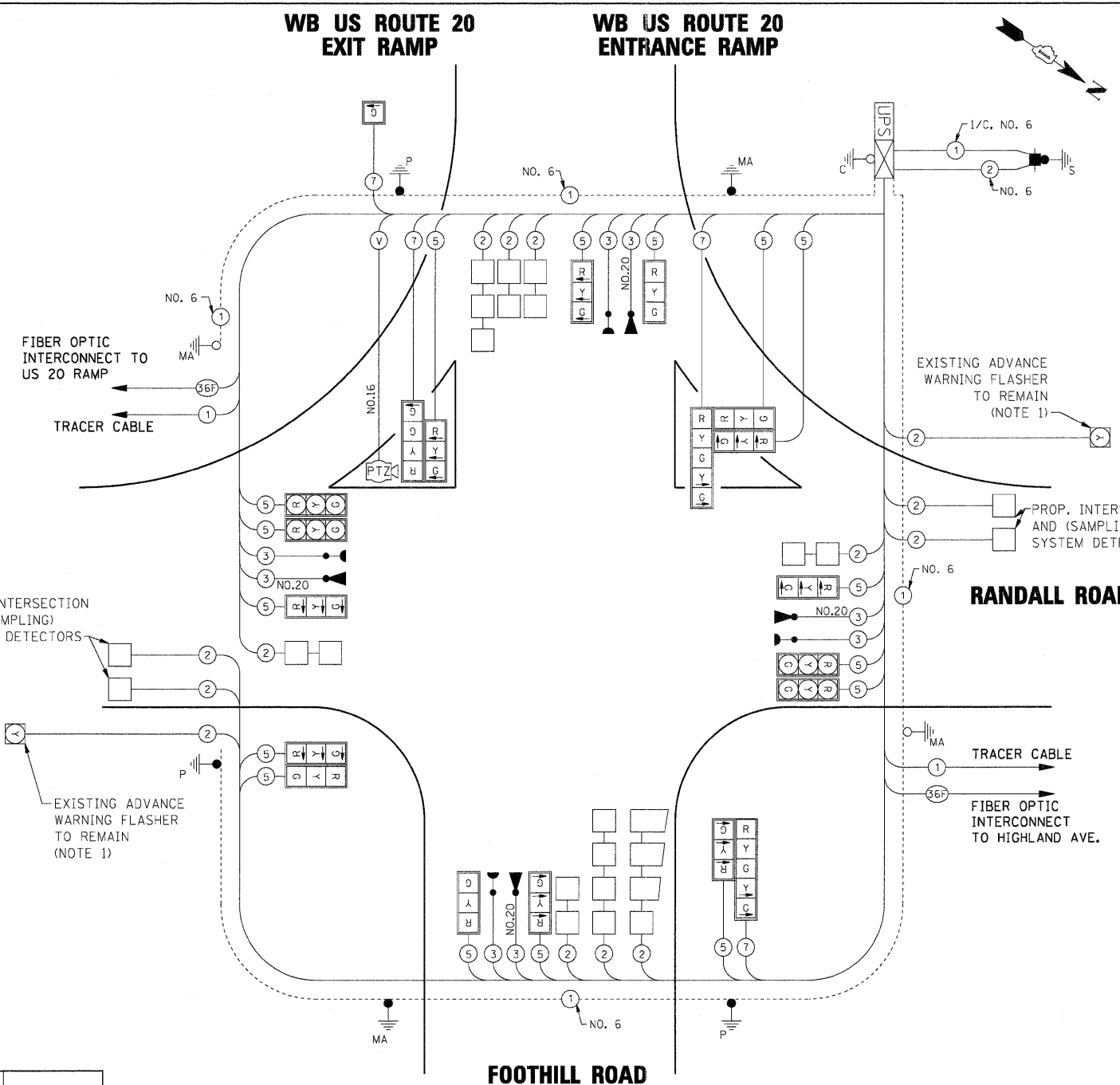
ENERGY SUPPLY CONTACT: CATHY NYSTROM  
PHONE: (847) 608-2331  
COMPANY: COMMONWEALTH EDISON

**NOTES:**

- EXISTING AMBER FLASHING BEACON SHALL BE ACTIVATED DURING STEADY AMBER AND RED SIGNAL INDICATIONS FOR SOUTHBOUND AND NORTHBOUND THROUGH PHASE.
- THE COORDINATED PHASES ARE 2 AND 6. THESE PHASES SHALL BE PLACED ON MIN. RECALL.
- PHASES 1 AND 5 SHALL HAVE ANTI-BACKUP FEATURE DISABLED.

IN ACCORDANCE WITH SECTION 806 OF THE STANDARD SPECIFICATIONS, GROUNDING ELECTRODES AND THE ASSOCIATED GROUNDING CONDUCTOR WILL NOT BE MEASURED FOR PAYMENT SEPARATELY BUT THE COST SHALL BE INCLUDED IN THE COST FOR THE ITEM BEING GROUNDING.

RESTORATION OF WORK AREA. RESTORATION OF THE TRAFFIC SIGNAL WORK AREA SHALL BE INCLUDED IN THE COST OF THE RELATED PAY ITEM SUCH AS FOUNDATION, CONDUIT, HANDHOLE, TRENCH AND BACKFILL, ETC., AND NO EXTRA COMPENSATION SHALL BE ALLOWED. ALL ROADWAY SURFACES SUCH AS SHOULDERS, MEDIANS, SIDEWALKS, PAVEMENT, ETC. SHALL BE REPLACED IN KIND. ALL DAMAGE TO MOWED LAWNS SHALL BE REPLACED WITH AN APPROVED SOD, AND ALL DAMAGE TO UNMOWED FIELDS SHALL BE SEEDED IN ACCORDANCE WITH STANDARD SPECIFICATIONS 252 AND 250 RESPECTIVELY.

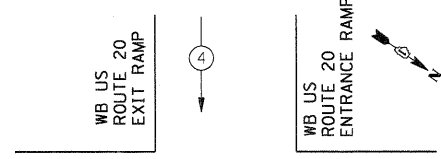


**SCHEDULE OF QUANTITIES**

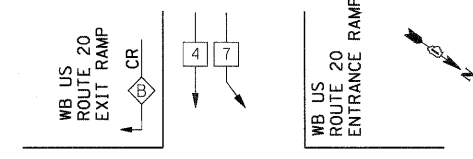
SERVICE INSTALLATION - GROUND MOUNTED UNDERGROUND CONDUIT, GALVANIZED STEEL, 2" DIA.	FOOT	1090
UNDERGROUND CONDUIT, GALVANIZED STEEL, 2 1/2" DIA.	FOOT	98
UNDERGROUND CONDUIT, GALVANIZED STEEL, 4" DIA.	FOOT	415
HANDHOLE	EACH	6
HEAVY DUTY HANDHOLE	EACH	4
DOUBLE HANDHOLE	EACH	1
ELECTRIC CABLE IN CONDUIT, SIGNAL NO. 14 2C	FOOT	2344
ELECTRIC CABLE IN CONDUIT, SIGNAL NO. 14 3C	FOOT	1036
ELECTRIC CABLE IN CONDUIT, SIGNAL NO. 14 5C	FOOT	3875
ELECTRIC CABLE IN CONDUIT, SIGNAL NO. 14 7C	FOOT	771
ELECTRIC CABLE IN CONDUIT, LEAD-IN, NO. 14 1 PAIR	FOOT	3232
TRAFFIC SIGNAL POST, GALVANIZED STEEL 10 FT.	EACH	1
TRAFFIC SIGNAL POST, GALVANIZED STEEL 14 FT.	EACH	1
TRAFFIC SIGNAL POST, GALVANIZED STEEL 16 FT.	EACH	1
STEEL MAST ARM ASSEMBLY AND POLE, 24 FT.	EACH	1
STEEL MAST ARM ASSEMBLY AND POLE, 34 FT.	EACH	1
CONCRETE FOUNDATION, TYPE A	FOOT	16
CONCRETE FOUNDATION, TYPE E 30-INCH DIAMETER	FOOT	10
CONCRETE FOUNDATION, TYPE E 36-INCH DIAMETER	FOOT	11
DRILL EXISTING HANDHOLE	EACH	5
SIGNAL HEAD, POLYCARBONATE, LED, 1-FACE, 1-SECTION, POST MOUNTED	EACH	1
SIGNAL HEAD, POLYCARBONATE, LED, 1-FACE, 3-SECTION, MAST ARM MOUNTED	EACH	6
SIGNAL HEAD, POLYCARBONATE, LED, 2-FACE, 3-SECTION, BRACKET MOUNTED	EACH	1
SIGNAL HEAD, POLYCARBONATE, LED, 2-FACE, 1-3-SECTION, 1-4-SECTION, BRACKET MOUNTED	EACH	1
SIGNAL HEAD, POLYCARBONATE, LED, 2-FACE, 1-3-SECTION, 1-5-SECTION, BRACKET MOUNTED	EACH	1
SIGNAL HEAD, POLYCARBONATE, LED, 3-FACE, 2-3-SECTION, 1-5-SECTION, BRACKET MOUNTED	EACH	1
TRAFFIC SIGNAL BACKPLATE, LOUVERED, ALUMINUM	EACH	16
INDUCTIVE LOOP DETECTOR	EACH	12
DETECTOR LOOP, TYPE I	FOOT	900
LIGHT DETECTOR	EACH	4
LIGHT DETECTOR AMPLIFIER	EACH	1
TEMPORARY TRAFFIC SIGNAL INSTALLATION	EACH	1
MODIFY EXISTING CONTROLLER	EACH	1
REMOVE ELECTRIC CABLE FROM CONDUIT	FOOT	971
REMOVE EXISTING TRAFFIC SIGNAL EQUIPMENT	EACH	1
REMOVE EXISTING HANDHOLE	EACH	10
REMOVE EXISTING DOUBLE HANDHOLE	EACH	1
REMOVE EXISTING CONCRETE FOUNDATION	EACH	4
REMOVE EXISTING JUNCTION BOX	EACH	2
ELECTRIC CABLE IN CONDUIT, NO. 20 3/C, TWISTED, SHIELDED	FOOT	1036
TEMPORARY TRAFFIC SIGNAL TIMING	EACH	1
CABLE, SPECIAL	FOOT	217
NETWORK CONFIGURATION	LSUM	1

OVERLAP LETTER	PERMISSIVE PHASE	PROTECTED PHASE
B	CONTINUOUS RIGHT	
D	8	1

**EXISTING CONTROLLER SEQUENCE**



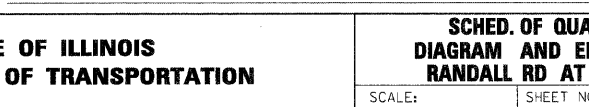
**PROPOSED CONTROLLER SEQUENCE**



**CONTROLLER SEQUENCE LEGEND**

- DUAL ENTRY PHASE
- SINGLE ENTRY PHASE
- OVERLAP
- CONTINUOUS RIGHT
- NUMBER REFERRING TO ASSOCIATED PHASE
- PEDESTRIAN PHASE

**EXISTING PHASE DESIGNATION DIAGRAM**



**PROPOSED PHASE DESIGNATION DIAGRAM**

