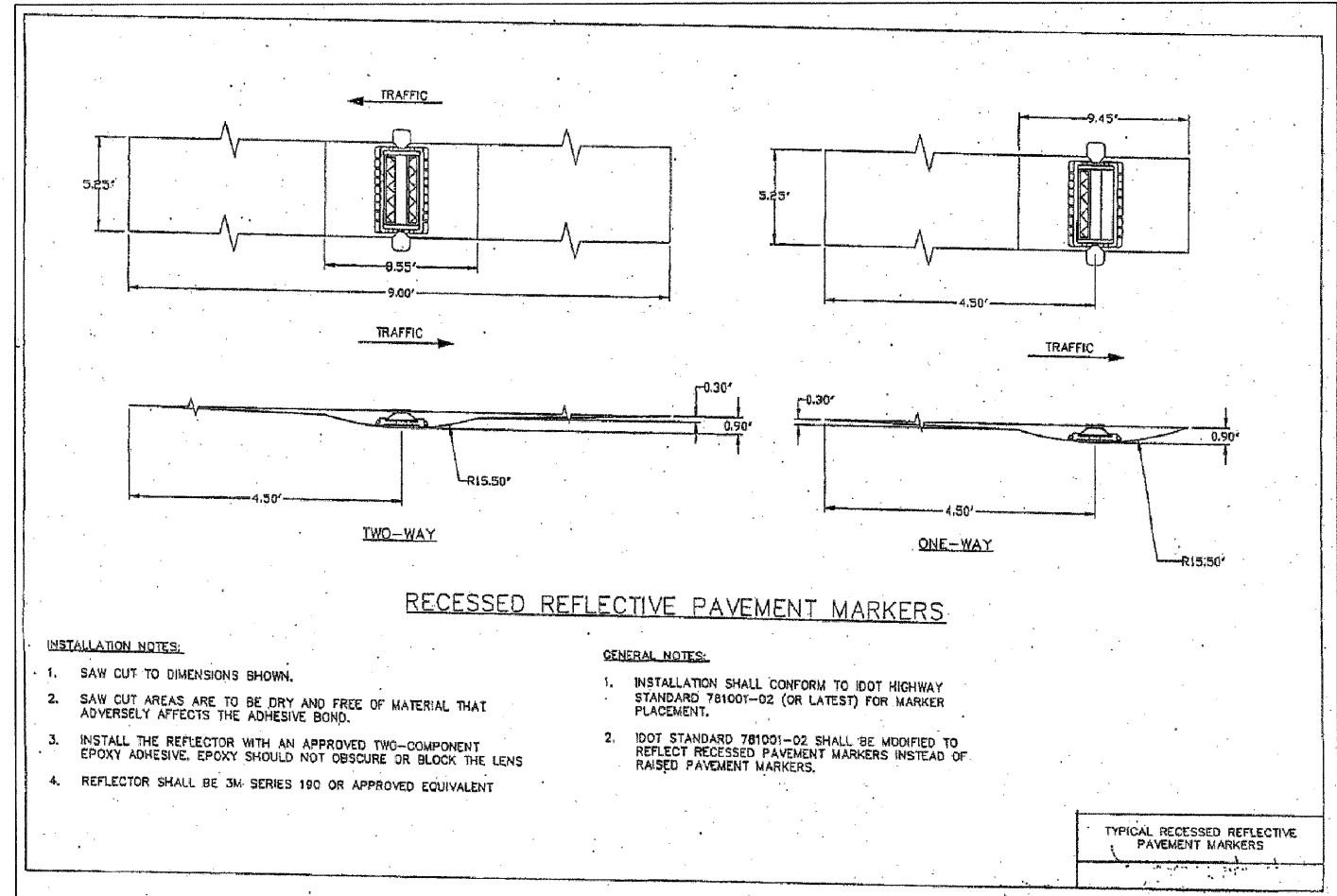
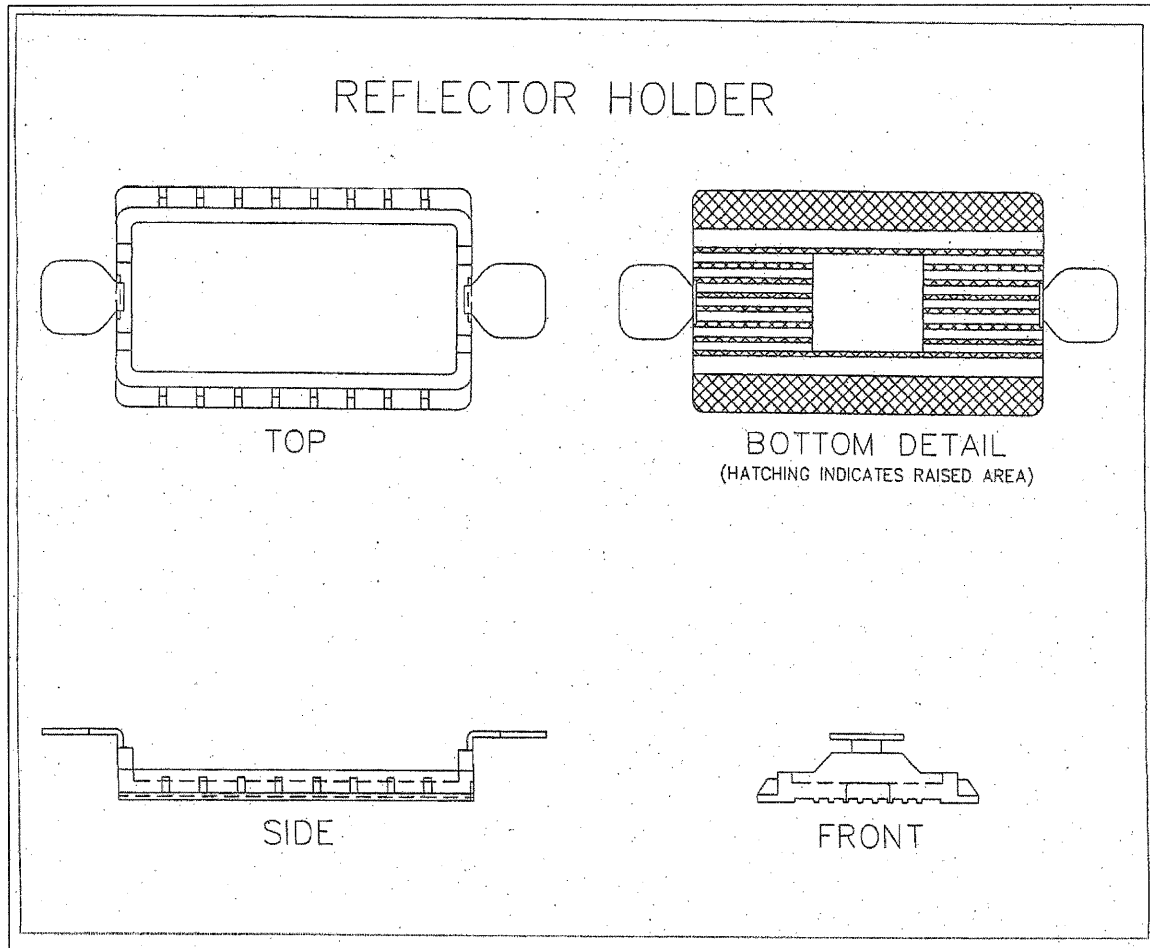


PLAN	DATE
SURVEYED	BY
ALIGNED	CHECKED
BY	NO.
NOTE BOOK	
NO.	
FILE NAME	

PROFILE	DATE
SURVEYED	BY
CHECKED	
GRADES	
BY	
NOTE BOOK	
NO.	
STRUCTURE NOTATIONS	



FILE NAME =
DI157207-SHT-DET-07.DGN

USER NAME = malopez
DESIGNED - ML
DRAWN - BH
CHECKED - DW
DATE - 05-03-11

REVISED -
REVISED -
REVISED -
REVISED -

**STATE OF ILLINOIS
DEPARTMENT OF TRANSPORTATION**

**RANDALL ROAD AT US ROUTE 20 (FOOTHILL ROAD)
MISCELLANEOUS DETAILS**

SCALE: NTS SHEET NO. OF SHEETS STA. TO STA.

F.A.P. RTE.	SECTION	COUNTY	TOTAL SHEETS	SHEET NO.
336	06-00345-00-CH	KANE	92	59
BD-32			CONTRACT NO. 63623	
FED. ROAD DIST. NO. 1 ILLINOIS FED. AID PROJECT				