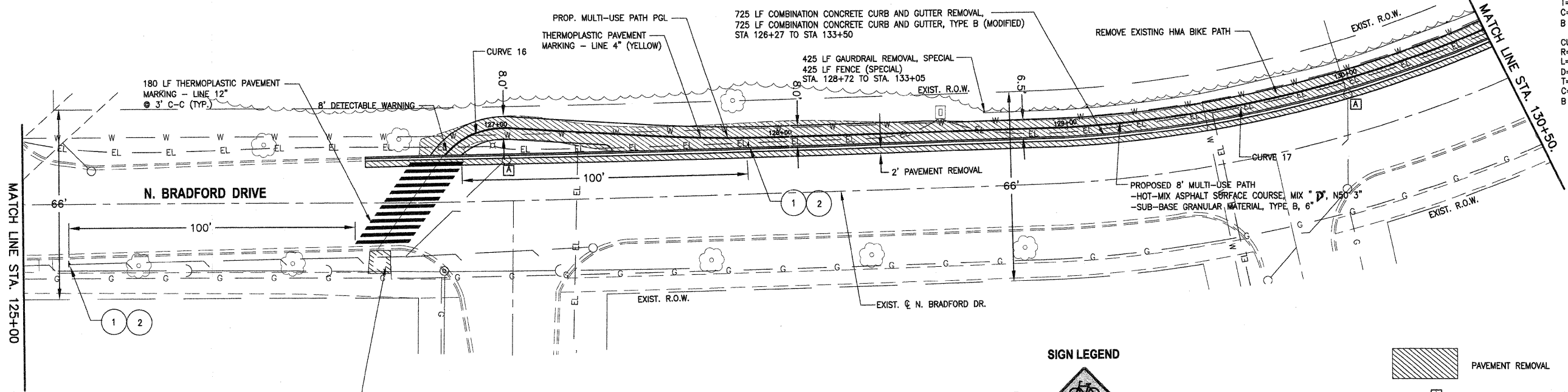


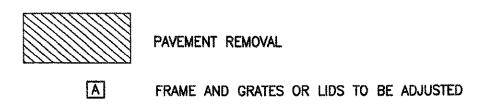
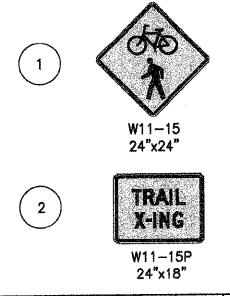


CURVE 16  
 R=27.70  
 L=25.39  
 D=52d30'59.4"  
 T=13.67  
 C=24.51  
 B of C=N 13'02'38.1" W

CURVE 17  
 R=421.75  
 L=199.37  
 D=27d5'6.1"  
 T=101.58  
 C=197.52  
 B of C=N 6'12'56.3" W

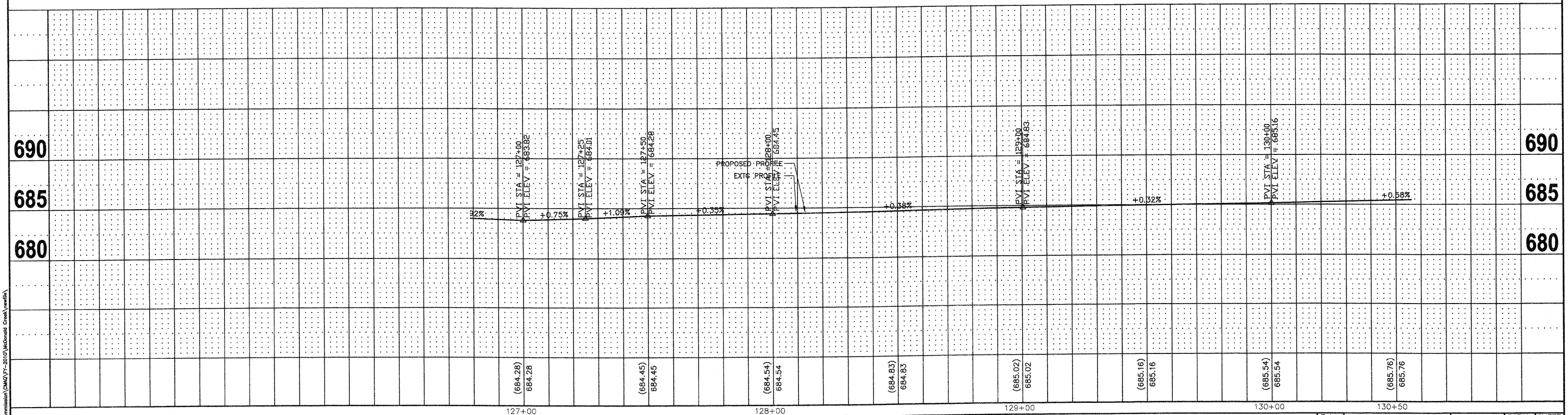


**SIGN LEGEND**



**NOTES:**

EXISTING BRUSH AND GARDEN MATERIALS IN CONFLICT WITH PROPOSED IMPROVEMENTS SHALL BE REMOVED AND OR RELOCATED AS DETERMINED BY THE ENGINEER AND INCLUDED IN THE COST OF EARTH EXCAVATION



DATE	
BY	
PLAN	
REVISED	
NOTES CHECKED	
NO.	
STRUCTURE NOTATIONS CHYD	

DATE	
BY	
PROFILE	
REVISED	
NOTES CHECKED	
NO.	
STRUCTURE NOTATIONS CHYD	

FILE NAME = 3d-phase1McDonald.dwg	USER NAME = chomuth	DESIGNED - BS	REVISED -	<b>STATE OF ILLINOIS DEPARTMENT OF TRANSPORTATION</b>	<b>MC DONALD CREEK MULTI USE PATH PLAN AND PROFILE</b>			F.A. RTE.	SECTION	COUNTY	TOTAL SHEETS	SHEET NO.
	LAYOUT NAME = 125+00-130+50	DRAWN - CH	REVISED -		HORIZ. 1"=20'				10-00196-00-BT	COOK	26	12
	PLOT SCALE = 20.00' / IN.	CHECKED - JM	REVISED -		SCALE: VERT. 1"=5'			SHEET NO.	OF SHEETS	STA. 125+00 TO STA. 130+50	CONTRACT NO. 63624	
	PLOT DATE = Oct 24, 2011 - 4:46pm	DATE - 04/12/2011	REVISED -		FED ROAD DIST NO. 1 ILLINOIS FED. AID PROJECT							