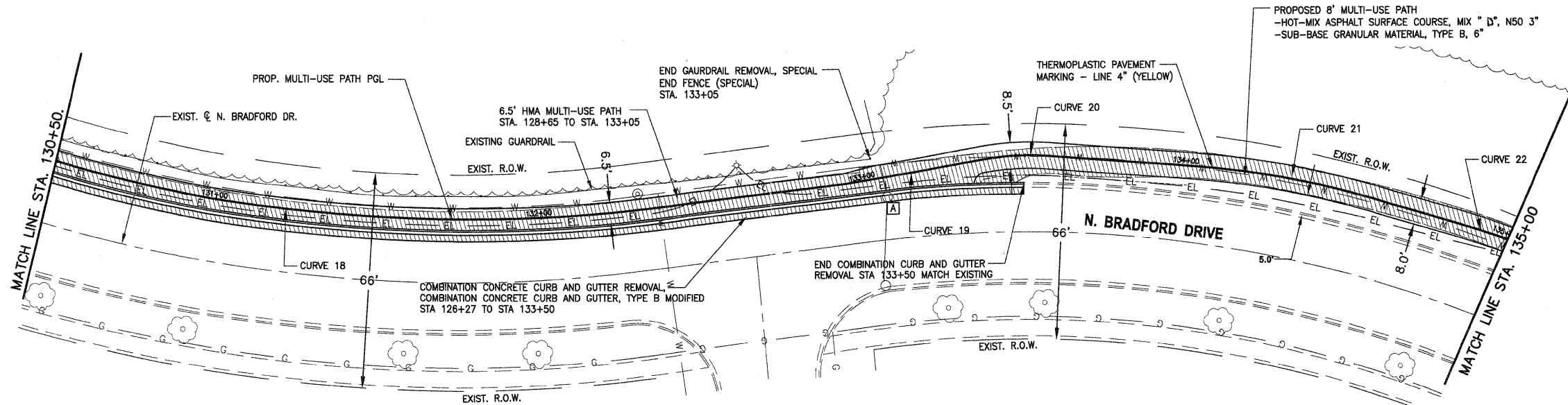


DATE	
BY	
DESIGNED	
DRAWN	
CHECKED	
IN CHARGE	
NO.	

DATE	
BY	
DESIGNED	
DRAWN	
CHECKED	
IN CHARGE	
NO.	



CURVE 18
 R=484.46
 L=149.74
 D=17d42'32.1"
 T=75.47
 C=149.14
 B of C=S 29'32'38.3" E

CURVE 19
 Radius=3035.82
 Length=42.41
 Delta=0d48'1.3"
 Tangent=21.20
 Chord=42.41
 B of C=S 39'46'11.7" E

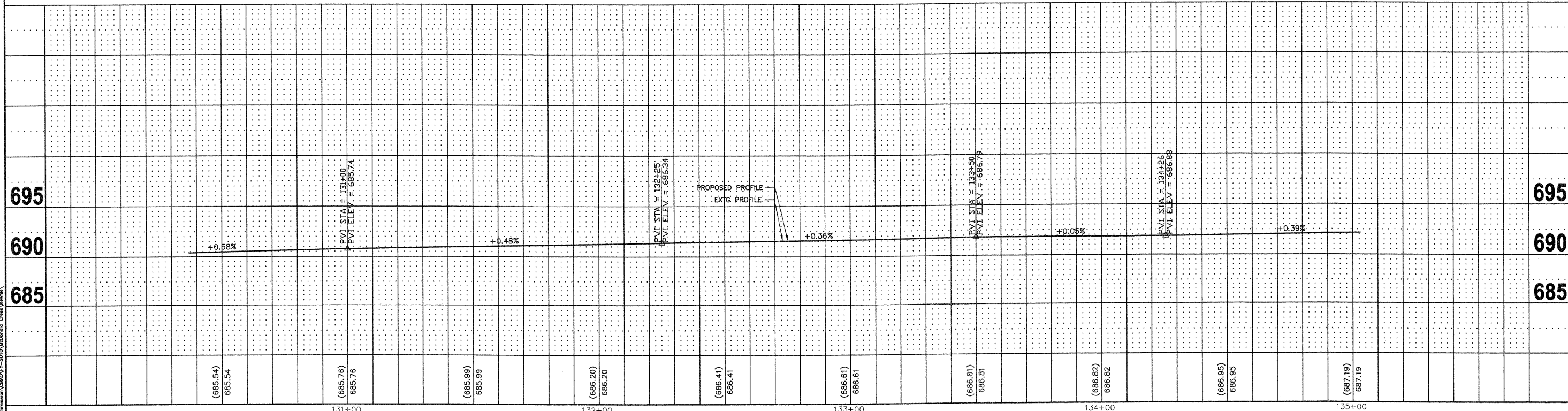
CURVE 20
 R=79.30
 L=20.06
 D=14d29'25.0"
 T=10.08
 C=20.00
 B of C=N 32'55'29.8" W

CURVE 21
 R=276.57
 L=63.51
 D=13d9'28.2"
 T=31.90
 C=63.37
 B of C=N 19'06'03.2" W

CURVE 22
 R=337.15
 L=117.98
 D=20d3'1.2"
 T=59.60
 C=117.38
 B of C=N 3'27'35.4" W

- PAVEMENT REMOVAL
- FRAME AND GRATES OR LIDS TO BE ADJUSTED

NOTES:
 EXISTING BRUSH AND GARDEN MATERIALS IN CONFLICT WITH PROPOSED IMPROVEMENTS SHALL BE REMOVED AND OR RELOCATED AS DETERMINED BY THE ENGINEER AND INCLUDED IN THE COST OF EARTH EXCAVATION



FILE NAME = 3d-phase1McDonald.dwg	USER NAME = chomuth	DESIGNED - BS	REVISED -	STATE OF ILLINOIS DEPARTMENT OF TRANSPORTATION	MC DONALD CREEK MULTI USE PATH PLAN AND PROFILE			F.A.R.T.E.	SECTION	COUNTY	TOTAL SHEETS	SHEET NO.
	LAYOUT NAME = 130+50-135+00	DRAWN - CH	REVISED -		HORIZ. 1"=20'			10-00196-00-BT	COOK	26	13	
	PLOT SCALE = 20.00' / IN.	CHECKED - JM	REVISED -		SCALE: VERT. 1"=5'			SHEET NO. OF SHEETS STA. 130+50 TO STA. 135+00			CONTRACT NO. 63624	
	PLOT DATE = Oct 24, 2011 - 4:31pm	DATE - 04/12/2011	REVISED -		FED ROAD DIST NO. 1 ILLINOIS FED. AID PROJECT							