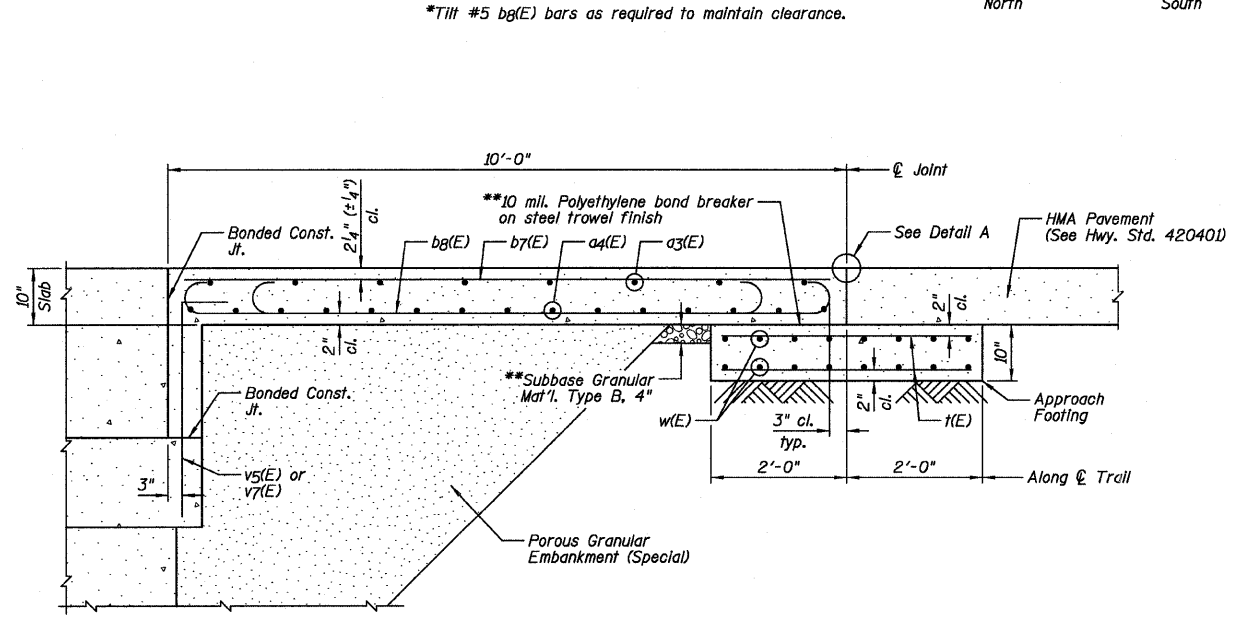
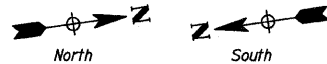


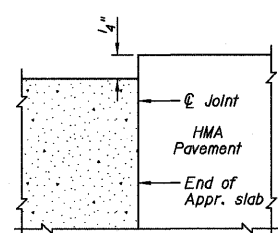
PLAN

*Tilt #5 bg(E) bars as required to maintain clearance.



SECTION A-A

**Cost Included with Concrete Superstructure.

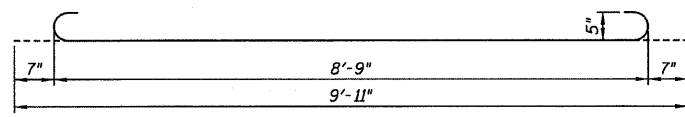


FLEXIBLE PAVEMENT

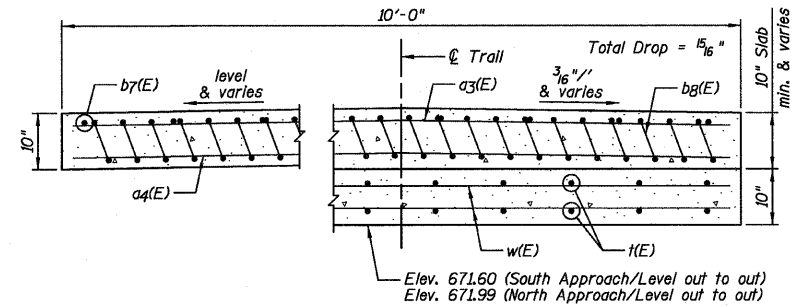
DETAIL A

**TWO APPROACHES
BILL OF MATERIAL**

Bar	No.	Size	Length	Shape
a3(E)	16	#4	9'-8"	—
a4(E)	30	#5	9'-8"	—
b7(E)	16	#4	9'-6"	—
bg(E)	46	#5	9'-11"	(U)
t(E)	40	#4	3'-8"	—
w(E)	32	#5	9'-8"	—
Item	Unit	Quantity		
Concrete Structures	Cu. Yd.	2.5		
Concrete Superstructure	Cu. Yd.	6.6		
Reinforcement Bars, Epoxy Coated	Pound	1,410		



BAR bg(E)



NEAR ABUTMENT

AT APPROACH FOOTING

SECTION B-B

See Plan for dimensions not shown.

NOTES:

- 1.) Approach Slab concrete shall be paid for as Concrete Superstructure.
- 2.) Approach Footing concrete shall be paid for as Concrete Structures.
- 3.) Reinforcement shall be paid for as Reinforcement Bars, Epoxy Coated.
- 4.) For v5(E) and v7(E) bar details, see Sheets B21 & B23.
- 5.) The Approach Footing maximum applied service bearing pressure (Qmax) = 2.0 ksf.
- 6.) Cost of excavation for Approach Footing Included with Concrete Structures.



DESIGNED - JML/JCZ	REVISED
CHECKED - JML	REVISED
DRAWN - DJM	REVISED
CHECKED - MSW	REVISED

**GENEVA PARK DISTRICT
GENEVA, ILLINOIS**

**BRIDGE APPROACH SLAB DETAILS
ISLAND PARK NORTH BRIDGE**

SHEET NO. B18 OF 31 SHEETS

F.A. RTE.	SECTION	COUNTY	TOTAL SHEETS	SHEET NO.
N/A	06-P4005-00-BR	KANE	42	27
CONTRACT NO. 63643			ILLINOIS FED. AID PROJECT	