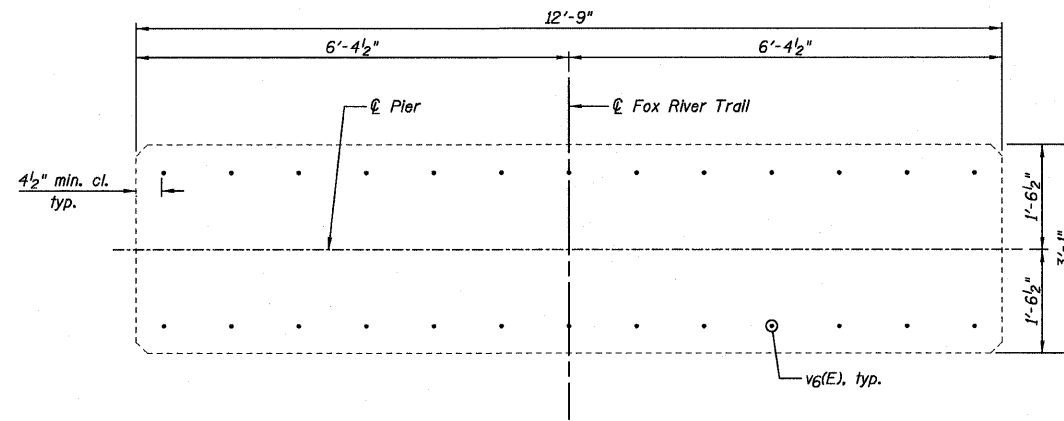
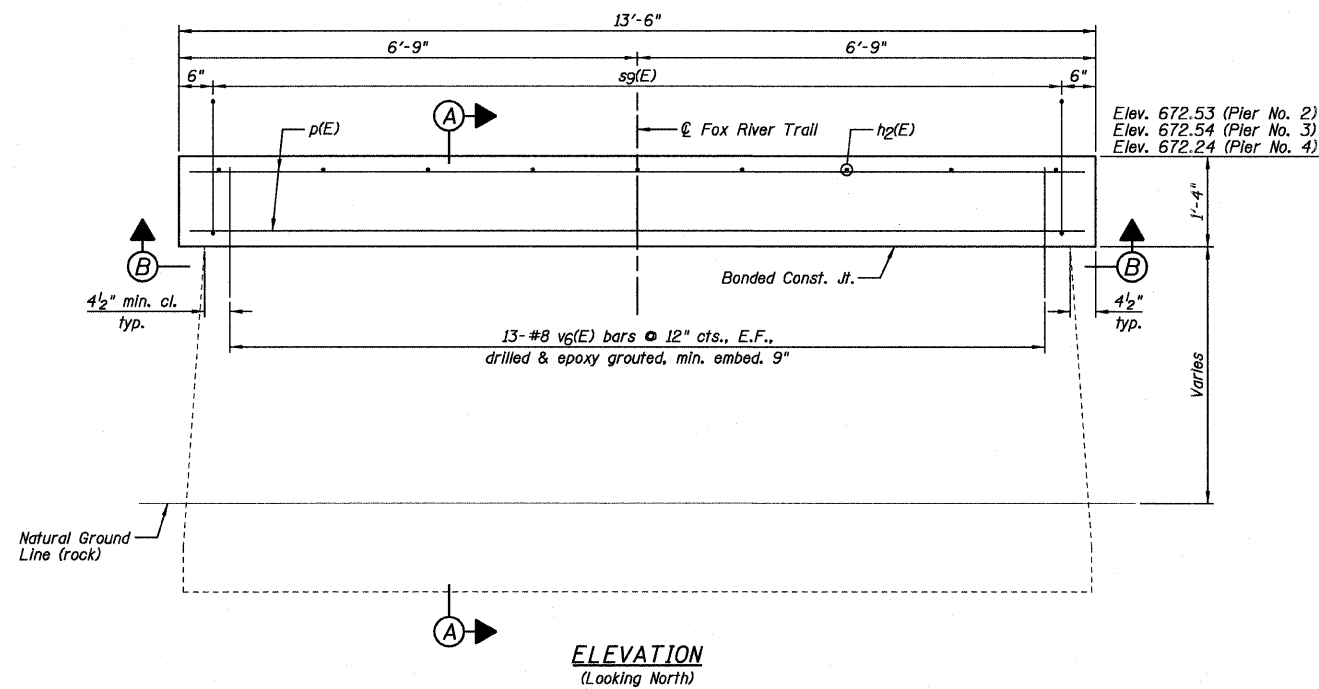


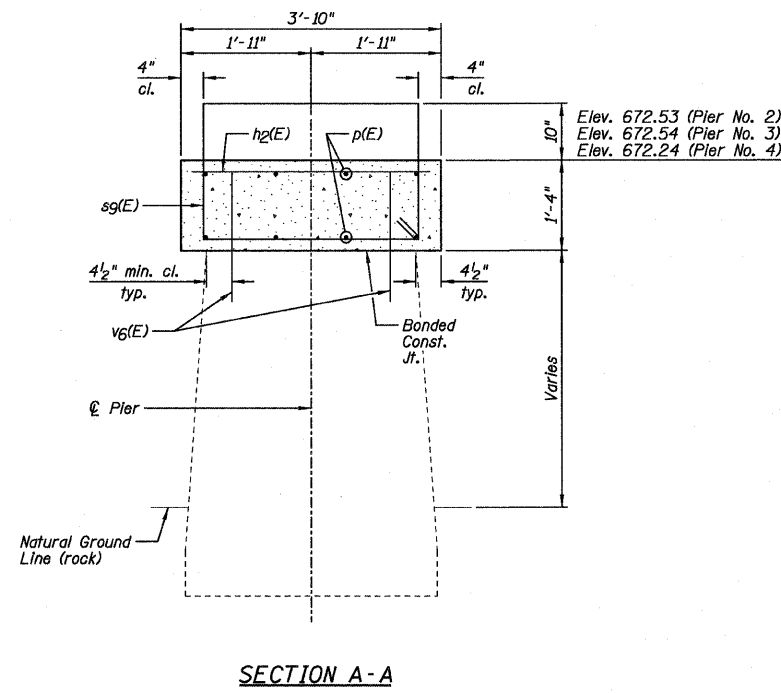
TOP PLAN VIEW



SECTION B-B



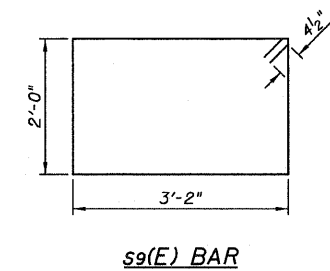
ELEVATION  
(Looking North)



SECTION A-A

PIER NO. 2 THRU PIER NO. 4  
BILL OF MATERIAL  
(For one pier only)

Bar	No.	Size	Length	Shape
h2(E)	9	#4	3'-6"	
p(E)	8	#7	13'-2"	
sg(E)	9	#4	11'-1"	□
v6(E)	26	#8	1'-11"	
Item		Unit	Quantity	
Concrete Structures		Cu. Yd.	2.5	
Reinforcement Bars, Epoxy Coated		Pound	440	



s9(E) BAR

- NOTES:
- 1.) E.F. denotes Each Face.
  - 2.) Drill & epoxy grout v6(E) bars in appropriate drilled holes according to Section 584 of the Standard Specifications. The type of epoxy grout shall be approved by the Engineer.

**Farnsworth**  
GROUP, INC.  
2709 McGraw Drive  
Bloomington, Illinois 61704  
309/663-8435, 309/663-1571 fax

DESIGNED - JML/JCZ	REVISED
CHECKED - JML	REVISED
DRAWN - DJM	REVISED
CHECKED - MSW	REVISED
DATE - 10/17/11	

GENEVA PARK DISTRICT  
GENEVA, ILLINOIS

PIER NO. 2 THRU PIER NO. 4 REPLACEMENT  
ISLAND PARK NORTH BRIDGE

SHEET NO. B27 OF 31 SHEETS

F.A. RTE.	SECTION	COUNTY	TOTAL SHEETS	SHEET NO.
N/A	06-P4005-00-BR	KANE	42	36
CONTRACT NO. 63643				
ILLINOIS FED. AID PROJECT				