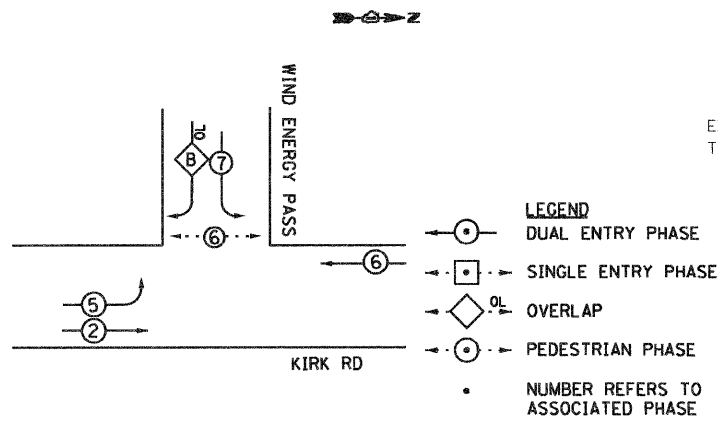
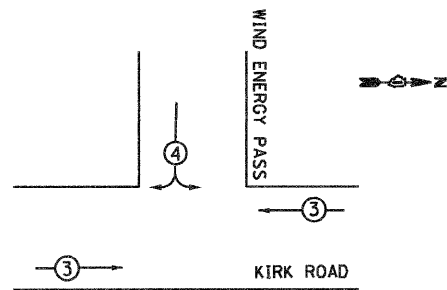
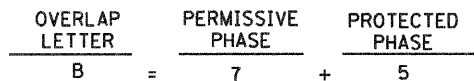


CONTROLLER SEQUENCE



RIGHT TURN OVERLAP PHASE DIAGRAM



PROPOSED EMERGENCY VEHICLE PREEMPTORS		
EMERGENCY VEHICLE PREEMPTOR	3	4
MOVEMENT	←→	↕

EMERGENCY VEHICLE PREEMPTION SEQUENCE NOTES FOR DUAL ENTRY OPERATION - ALL LEGS

I.D.O.T. TRAFFIC SIGNAL INSTALLATION ELECTRICAL SERVICE REQUIREMENTS				
TYPE	NO. OF LAMPS	WATTAGE	% OPERATION	TOTAL WATTAGE
SIGNAL (RED)	10	17	0.50	85
(YELLOW)	6	25	0.25	37.5
(GREEN)	6	15	0.25	22.5
YELLOW ARROW	4	12	0.25	12
GREEN ARROW	4	12	0.25	12
GN/YW LT ARROW	4	12	0.10	4.8
PED. SIGNAL	2	25	1.0	50
CONTROLLER	1	100	1.0	100
ILLUM. SIGN	0	25	1.0	0
FLASHER	0	-	-	0
TOTAL =				323.8

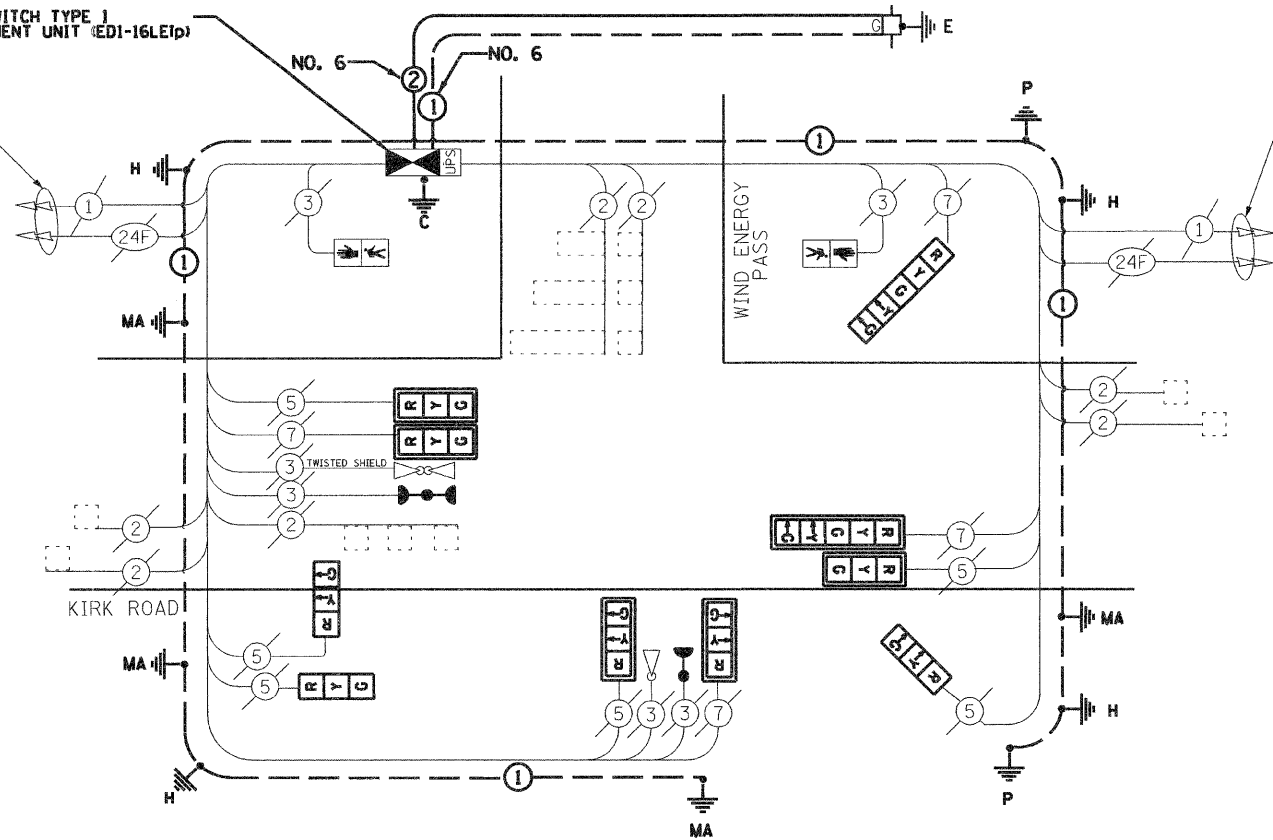
ENERGY COST TO : KANE COUNTY DIVISION OF TRANSPORTATION
41 W011 BURLINGTON ROAD
ST. CHARLES, ILLINOIS 60175

ENERGY SUPPLY CONTACT: COMED
PHONE: 1-800-EDISON1
COMPANY: COMED

FOUNDATION (DEPTH)	(FT.)	CABLE SLACK	(FT.)	VERTICAL	(FT.)
TYPE A - POST	4	HANDHOLE	6.5	ALL FOUNDATIONS	3.5
C - CONTROLLER W/LPS	4	DOUBLE HANDHOLE	13	MAST ARM (L) POLE	20'-4"-2"
D - CONTROLLER	4	SIGNAL POST	2	BRACKET MOUNTED	13
E - MAST ARM POLE		CONTROLLER CAB.	1	PED. PUSHBUTTON	6
	30"	FIBER OPTIC	13	ELECTRIC SERVICE	13.5
	36"	ELECTRIC SERVICE	1	SERVICE TO GROUND	13.5
	42"	GROUND CABLE	1	POST MOUNTED	6

ETHERNET MANAGED SWITCH TYPE 1
MALFUNCTION MANAGEMENT UNIT (ED1-16LE1p)
(SEE NOTE 2)

EXISTING INTERCONNECT TO MESA LANE



EXISTING INTERCONNECT TO PINE

- NOTES:
- 24F 15 FIBER OPTIC CABLE No. 62.5/125 MM 12F, SM12F
 - MALFUNCTION MANAGEMENT UNIT TO BE PAID FOR UNDER FULL-ACTUATED CONTROLLER AND TYPE IV CABINET

SEE SHEET 64 FOR TRAFFIC SIGNAL LEGEND

SCHEDULE OF QUANTITIES - KIRK ROAD AND WIND ENERGY PASS

PAY ITEM	UNIT	QUANTITY
EARTH EXCAVATION	CU YD	2
PORTLAND CEMENT CONCRETE SIDEWALK 5 INCH	SQ FT	23.2
MAINTENANCE OF EXISTING TRAFFIC SIGNAL INSTALLATION	EACH	1
FULL-ACTUATED CONTROLLER AND TYPE IV CABINET	EACH	1
ELECTRIC CABLE IN CONDUIT, SERVICE, NO. 6 2C	EACH	113
SIGNAL HEAD, LED, 1-FACE, 3-SECTION, BRACKET MOUNTED	EACH	1
SIGNAL HEAD, LED, 1-FACE, 3-SECTION, MAST-ARM MOUNTED	EACH	5
SIGNAL HEAD, LED, 1-FACE, 5-SECTION, BRACKET MOUNTED	EACH	1
SIGNAL HEAD, LED, 1-FACE, 5-SECTION, MAST-ARM MOUNTED	EACH	1
SIGNAL HEAD, LED, 2-FACE, 3-SECTION, BRACKET MOUNTED	EACH	1
PEDESTRIAN SIGNAL HEAD, LED, 1-FACE, BRACKET MOUNTED WITH COUNTDOWN TIMER	EACH	2
TRAFFIC SIGNAL BACKPLATE, LOUVERED	EACH	6
REMOVE EXISTING TRAFFIC SIGNAL EQUIPMENT	EACH	1
GROUNDING EXISTING HANDHOLE FRAME AND COVER	FOOT	4
UNINTERRUPTIBLE POWER SUPPLY, STANDARD	EACH	1
ELECTRIC CABLE IN CONDUIT, EQUIPMENT GROUNDING CONDUCTOR, NO. 6 1C	FOOT	393
ETHERNET MANAGED SWITCH TYPE 1	EACH	1
RE-OPTIMIZE TRAFFIC SIGNAL SYSTEM, LEVEL 2	EACH	1
CONFIRMATION BEACON	EACH	3