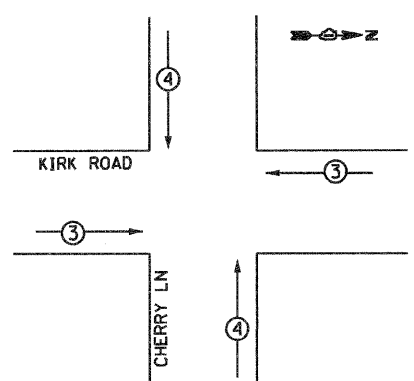


LEGEND
 ○ DUAL ENTRY PHASE
 □ SINGLE ENTRY PHASE
 ◇ OVERLAP
 ○ PEDESTRIAN PHASE
 • NUMBER REFERS TO ASSOCIATED PHASE

RIGHT TURN OVERLAP PHASE DIAGRAM

OVERLAP LETTER	PERMISSIVE PHASE	PROTECTED PHASE
B	4	5
C	8	7

EMERGENCY VEHICLE PREEMPTION SEQUENCE NOTES FOR DUAL ENTRY OPERATION - ALL LEGS



PROPOSED EMERGENCY VEHICLE PREEMPTORS

EMERGENCY VEHICLE PREEMPTOR	3	4
MOVEMENT	← →	↑ ↓

NOTES:
 1. 36F IS FIBER OPTIC CABLE No. 62.5/125 MM 12F, SM24F

SEE SHEET 64 FOR TRAFFIC SIGNAL LEGEND

SCHEDULE OF QUANTITIES - KIRK ROAD AND CHERRY ROAD

PAY ITEM	UNIT	QUANTITY
EARTH EXCAVATION	CU YD	2
PORTLAND CEMENT CONCRETE SIDEWALK 5 INCH	SO FT	23.2
MAINTENANCE OF EXISTING TRAFFIC SIGNAL INSTALLATION	EACH	1
ELECTRIC CABLE IN CONDUIT, SERVICE, NO. 6 2C	FOOT	42
REMOVE EXISTING TRAFFIC SIGNAL EQUIPMENT	EACH	1
SERVICE INSTALLATION-POLE MOUNTED	EACH	1
GROUNDING EXISTING HANDHOLE FRAME AND COVER	EACH	6
UNINTERRUPTABLE POWER SUPPLY, STANDARD	EACH	1
ELECTRIC CABLE IN CONDUIT, EQUIPMENT GROUNDING CONDUCTOR, NO. 6 1C	FOOT	372
RE-OPTIMIZE TRAFFIC SIGNAL SYSTEM, LEVEL 2	EACH	1
MALFUNCTION MANAGEMENT UNIT	EACH	1
CONFIRMATION BEACON	EACH	4
ETHERNET MANAGED SWITCH, TYPE 1	EACH	1
INTERSECTION VIDEO TRAFFIC MONITORING SYSTEM WITH PTZ CAMERA	EACH	1
OUTDOOR RATED NETWORK CABLE	FOOT	36
MODIFY EXISTING CONTROLLER CABINET	EACH	1

I.D.O.T. TRAFFIC SIGNAL INSTALLATION ELECTRICAL SERVICE REQUIREMENTS

TYPE	NO. OF LAMPS	WATTAGE		% OPERATION	TOTAL WATTAGE
		INCAND.	LED		
SIGNAL (RED)	10	17	0.50	85	
(YELLOW)	10	25	0.25	62.5	
(GREEN)	10	15	0.25	62.5	
ARROW	10	12	0.10	12	
PED. SIGNAL	2	25	1.0	50	
CONTROLLER	0	100	1.0	0	
ILLUM. SIGN	0	25	1.0	0	
FLASHER	0	-	-	0	
TOTAL =					272

ENERGY COST TO : KANE COUNTY DIVISION OF TRANSPORTATION
 41 WOLL BURLINGTON ROAD
 ST. CHARLES, ILLINOIS 60175

ENERGY SUPPLY CONTACT: COMED
 PHONE: 1-800-EDISONI
 COMPANY: COMED

FOUNDATION (DEPTH)	(FT.)	CABLE SLACK	(FT.)	VERTICAL	(FT.)
TYPE A - POST	4	HANDHOLE	6.5	ALL FOUNDATIONS	3.5
C - CONTROLLER #/UPS	4	DOUBLE HANDHOLE	13	MAST ARM (L) POLE	20'-L-2
D - CONTROLLER	4	SIGNAL POST	2	BRACKET MOUNTED	13
E - MAST ARM POLE		CONTROLLER CAB.	1	PED. PUSHBUTTON	6
	30"	FIBER OPTIC	13	ELECTRIC SERVICE	13.5
	36"	ELECTRIC SERVICE	1	SERVICE TO GROUND	13.5
	42"	GROUND CABLE	1	POST MOUNTED	6

JACOBS
 ONE NORTH FRANKLIN
 CHICAGO IL, 60606
 312-251-3000

USER NAME =	DESIGNED - CH	REVISED -
PLOT SCALE =	DRAWN - MO, DI	REVISED -
PLOT DATE = 11/7/2011	CHECKED - KG	REVISED -
	DATE - #DATE	REVISED -

KANE COUNTY DIVISION OF TRANSPORTATION

CABLE PLAN, PHASE DESIGNATION DIAGRAM, AND SCHEDULE OF QUANTITIES KIRK ROAD AND CHERRY LANE

F.A.P. RTE.	SECTION	COUNTY	TOTAL SHEETS	SHEET NO.
360	10-00403-00-TL	KANE	72	16
FED. ROAD DIST. NO. (ILLINOIS) FED. AID PROJECT			CONTRACT NO. 63648	