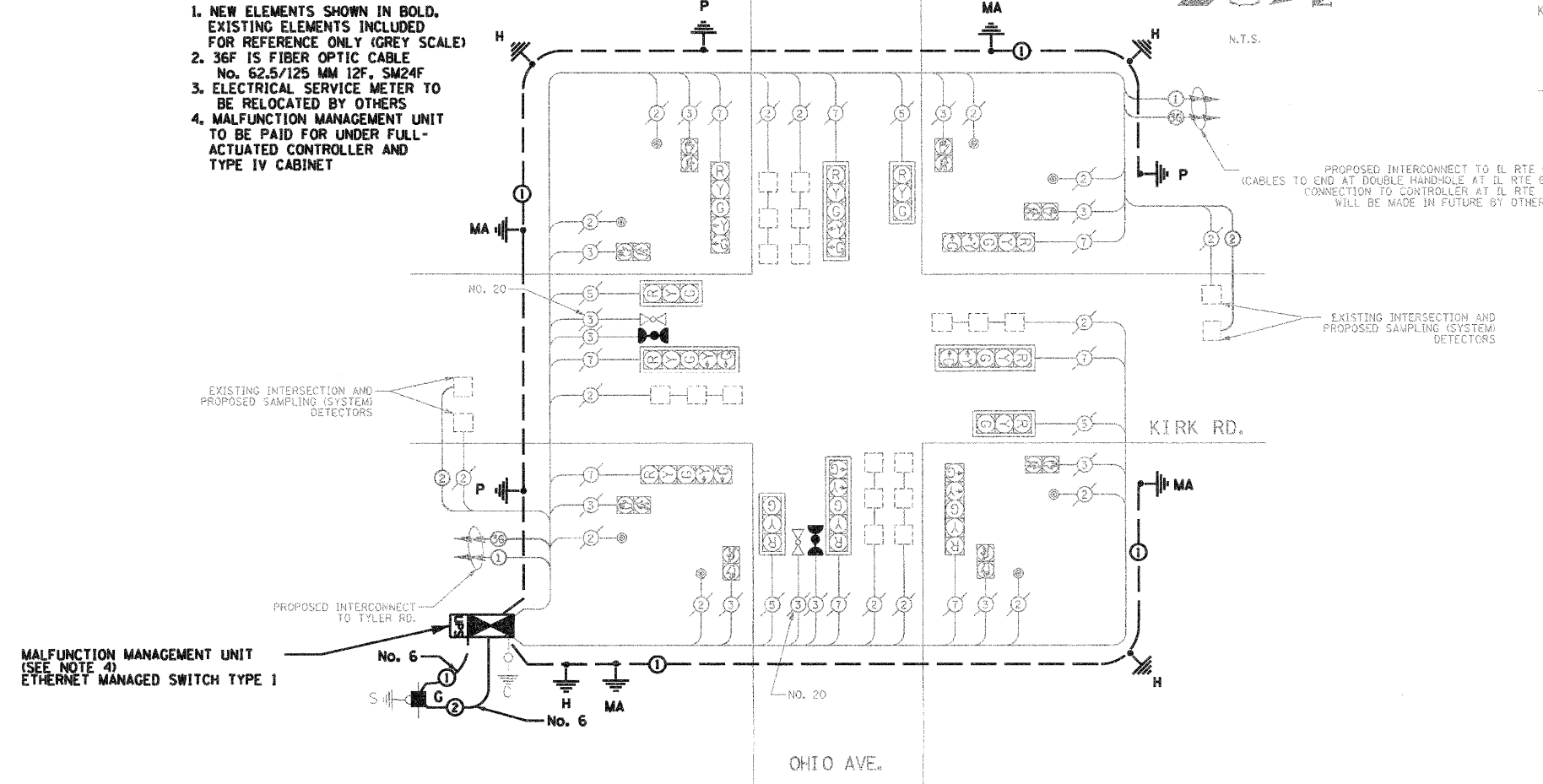


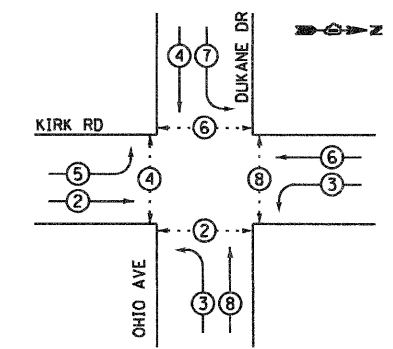
CABLE PLAN

NOTES:

1. NEW ELEMENTS SHOWN IN BOLD, EXISTING ELEMENTS INCLUDED FOR REFERENCE ONLY (GREY SCALE)
2. 36F IS FIBER OPTIC CABLE No. 62.5/125 MM 12F, SM24F
3. ELECTRICAL SERVICE METER TO BE RELOCATED BY OTHERS
4. MALFUNCTION MANAGEMENT UNIT TO BE PAID FOR UNDER FULL-ACTUATED CONTROLLER AND TYPE IV CABINET

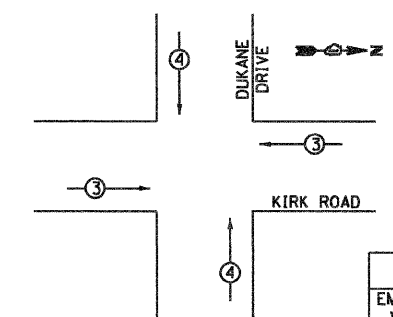


CONTROLLER SEQUENCE



- LEGEND**
- DUAL ENTRY PHASE
 - SINGLE ENTRY PHASE
 - OVERLAP
 - PEDESTRIAN PHASE
 - NUMBER REFERS TO ASSOCIATED PHASE

PHASE DESIGNATION DIAGRAM EMERGENCY VEHICLE PREEMPTION SEQUENCE



EMERGENCY VEHICLE PREEMPTOR	3	4
MOVEMENT	← →	↑ ↓

SEE SHEET 64 FOR TRAFFIC SIGNAL LEGEND

TYPE	NO. OF LAMPS	WATTAGE		% OPERATION	TOTAL WATTAGE
		INCAND.	LED		
SIGNAL (RED)	10	17	0.50	85	
(YELLOW)	10	25	0.25	62.5	
(GREEN)	10	15	0.25	62.5	
ARROW	10	12	0.10	12	
PED. SIGNAL	2	25	1.0	50	
CONTROLLER	0	100	1.0	0	
ILLUM. SIGN	0	25	1.0	0	
FLASHER	0	-	-	0	
TOTAL =					272

ENERGY COST TO : KANE COUNTY DIVISION OF TRANSPORTATION
41 W011 BURLINGTON ROAD
ST. CHARLES, ILLINOIS 60175

ENERGY SUPPLY CONTACT: COMED
PHONE: 1-800-EDISONI
COMPANY: COMED

FOUNDATION (DEPTH)	(FT.)	CABLE SLACK	(FT.)	VERTICAL	(FT.)
TYPE A - POST	4	HANDHOLE	6.5	ALL FOUNDATIONS	3.5
C - CONTROLLER W/UPS	4	DOUBLE HANDHOLE	13	MAST ARM (L) POLE	20'H-2'
D - CONTROLLER	4	SIGNAL POST	2	BRACKET MOUNTED	13
E - MAST ARM POLE		CONTROLLER CAB.	1	PED. PUSHBUTTON	6
	30"	FIBER OPTIC	13	ELECTRIC SERVICE	13.5
	36"	ELECTRIC SERVICE	1	SERVICE TO GROUND	13.5
	42"	GROUND CABLE	1	POST MOUNTED	6

SCHEDULE OF QUANTITIES - KIRK ROAD AND OHIO/DUKANE

PAY ITEM	UNIT	QUANTITY
EARTH EXCAVATION	CU YD	2
PORTLAND CEMENT CONCRETE SIDEWALK 5 INCH	SO FT	23.2
CONDUIT IN TRENCH, 2" DIA., GALVANIZED STEEL	FOOT	10
TRENCH AND BACKFILL FOR ELECTRICAL WORK	FOOT	10
MAINTENANCE OF EXISTING TRAFFIC SIGNAL INSTALLATION	EACH	1
FULL-ACTUATED CONTROLLER AND TYPE IV CABINET	EACH	1
ELECTRICAL CABLE IN CONDUIT, SERVICE, NO. 6 2C	FOOT	25
CONCRETE FOUNDATION, TYPE A	FOOT	4
DRILL EXISTING HANDHOLE	EACH	1
REMOVE EXISTING TRAFFIC SIGNAL EQUIPMENT	EACH	1
SERVICE INSTALLATION - GROUND MOUNTED	EACH	1
GROUNDING EXISTING HANDHOLE FRAME AND COVER	EACH	4
UNINTERRUPTABLE POWER SUPPLY, STANDARD	FOOT	1
ELECTRIC CABLE IN CONDUIT, EQUIPMENT GROUNDING CONDUCTOR, NO. 6 1C	EACH	410
ETHERNET MANAGED SWITCH TYPE 1	EACH	1
RE-OPTIMIZE TRAFFIC SIGNAL SYSTEM, LEVEL 2	EACH	1
CONFIRMATION BEACON	EACH	4

JACOBS
ONE NORTH FRANKLIN
CHICAGO IL, 60606
312-251-3000

USER NAME =	DESIGNED - CH	REVISED -
PLOT SCALE =	DRAWN - MO, DI	REVISED -
PLOT DATE = 11/7/2011	CHECKED - KG	REVISED -
	DATE - #DATE	REVISED -

**KANE COUNTY
DIVISION OF TRANSPORTATION**

CABLE PLAN, PHASE DESIGNATION DIAGRAM,
AND SCHEDULE OF QUANTITIES
KIRK ROAD AND OHIO AVENUE /DUKANE DRIVE

SCALE: SHEET NO. OF SHEETS STA. TO STA.

F.A.P. RTE. 360	SECTION 10-00403-00-TL	COUNTY KANE	TOTAL SHEETS 72	SHEET NO. 24
FED. ROAD DIST. NO. ILLINOIS FED. AID PROJECT			CONTRACT NO. 63648	