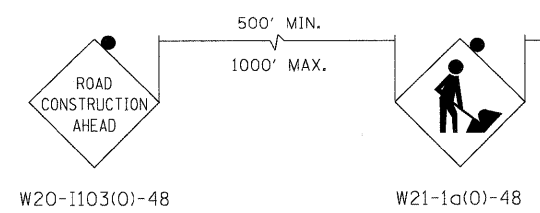
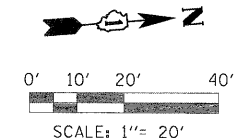


- LEGEND**
- WORK AREA
 - FLASHING ARROW BOARD
 - TRAFFIC LANE
 - TYPE III BARRICADES
 - VERTICAL PANELS @ 200' UNLESS OTHERWISE SHOWN
 - TEMPORARY SIGN
 - DRUMS @ 50' CENTERS UNLESS OTHERWISE SHOWN
 - IMPACT ATTENUATOR
 - PROPOSED ROW
 - EXISTING ROW
 - TEMPORARY EASEMENT
- ① TEMPORARY PAVEMENT MARKING TAPE, TYPE III, LETTERS AND SYMBOLS (WHITE)
 - ② TEMPORARY PAVEMENT MARKING TAPE, TYPE III, 4 INCH (WHITE)
 - ③ TEMPORARY PAVEMENT MARKING TAPE, TYPE III, 4 INCH (DOUBLE YELLOW)
 - ④ TEMPORARY PAVEMENT MARKING TAPE, TYPE III, 6 INCH (WHITE)
 - ⑤ TEMPORARY PAVEMENT MARKING TAPE, TYPE III, 12 INCH (WHITE)
 - ⑥ TEMPORARY PAVEMENT MARKING TAPE, TYPE III, 12 INCH (YELLOW)
 - ⑦ TEMPORARY PAVEMENT MARKING TAPE, TYPE III, 24 INCH (WHITE)
 - ⑧ TEMPORARY PAVEMENT MARKING TAPE, TYPE III, 6 INCH (WHITE DOTTED)



ADVANCE SIGN SEQUENCE



FILE NAME = ...
 USER NAME = mcoleman
 PLOT DATE = 11/10/2011

DESIGNED - MAC	REVISED -
DRAWN - TMB	REVISED -
CHECKED - RMT	REVISED -
DATE - 10/23/2011	REVISED -



CITY OF ST. CHARLES

**MAINTENANCE OF TRAFFIC
 IL 25 — STAGE 1**

SCALE: 1"=20' SHEET NO. 12 OF 20 SHEETS STA. BOP TO STA. 306+00.00

F.A. RTE.	SECTION	COUNTY	TOTAL SHEETS	SHEET NO.
	04-00092-00-BR	KANE	440	93
				CONTRACT NO. 63650
ILLINOIS FED. AID PROJECT				