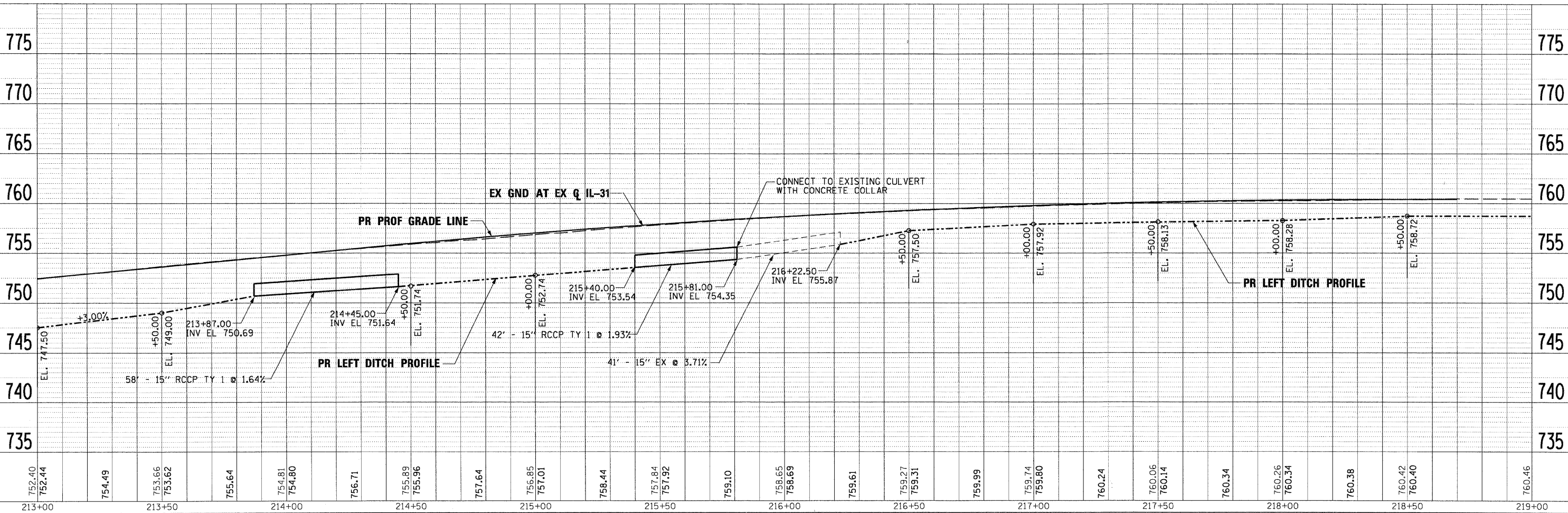


- F-2**
15" FES
STA 214+45.00, 37.0' LT
INV EL S 751.64
- F-3**
15" FES
STA 213+87.00, 39.0' LT
INV EL N 750.69
- F-2**
58' - 15" RCCP TY 1 @ 1.64%
- F-4**
15" FES
STA 215+40.00, 39.0' LT
INV EL S 753.54
- F-4**
42' - 15" RCCP TY 1 @ 1.93%

NOTE
REFER TO SPECIFICATIONS REGARDING POTENTIAL UTILITY CONFLICTS



PLAN	BY	DATE
SURVEYED		
ALIGNED		
CHECKED		
RT. OF WAY CHECKED		
NO. _____		

PROFILE	BY	DATE
DRAWN		
CHECKED		
STRUCTURE NOTATIONS CHKD		
NO. _____		

PLOT SCALE: 1/2"= 10'
 FILE NAME: ...
 USER NAME: tblank
 PLOT DATE: 11/29/2011

FILE NAME =	DESIGNED - MAC	REVISED -
...prp1n-abc sht IL31 drn plnprf-13.dgn	DRAWN - TMB	REVISED -
USER NAME = tblank	CHECKED - RMT	REVISED -
PLOT DATE = 11/29/2011	DATE - 10/23/2011	REVISED -



CITY OF ST. CHARLES

DRAINAGE AND UTILITY PLAN AND PROFILE
IL 31

SCALE: 1"=20' SHEET NO. 10 OF 19 SHEETS STA. 213+00.00 TO STA. EOP

F.A. RTE.	SECTION	COUNTY	TOTAL SHEETS	SHEET NO.
	04-00092-00-BR	KANE	440	134
CONTRACT NO. 63650			ILLINOIS FED. AID PROJECT	