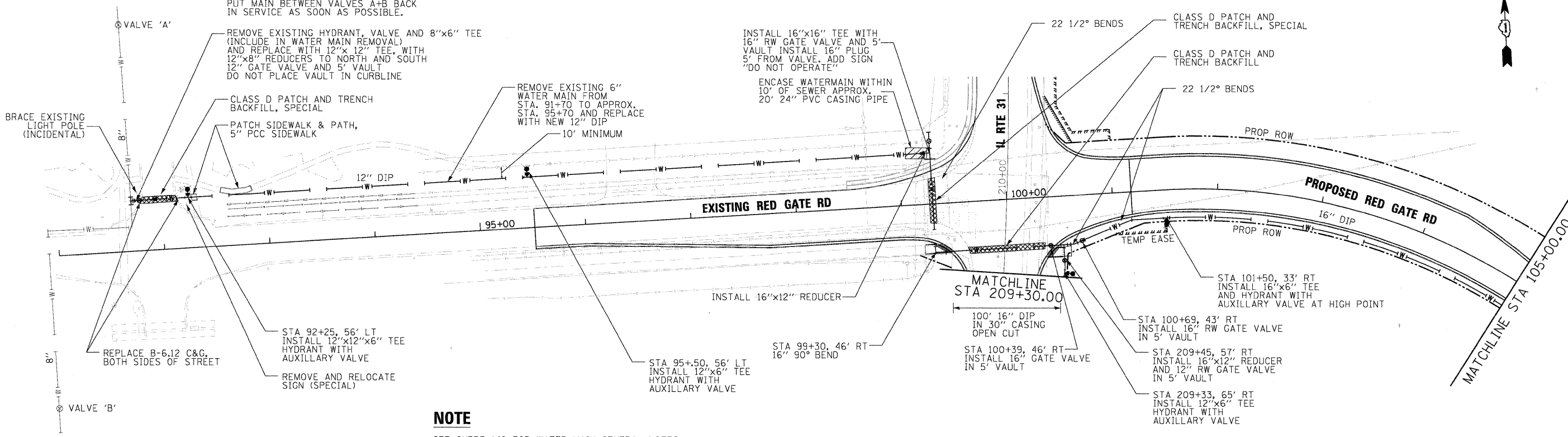
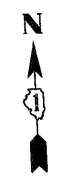
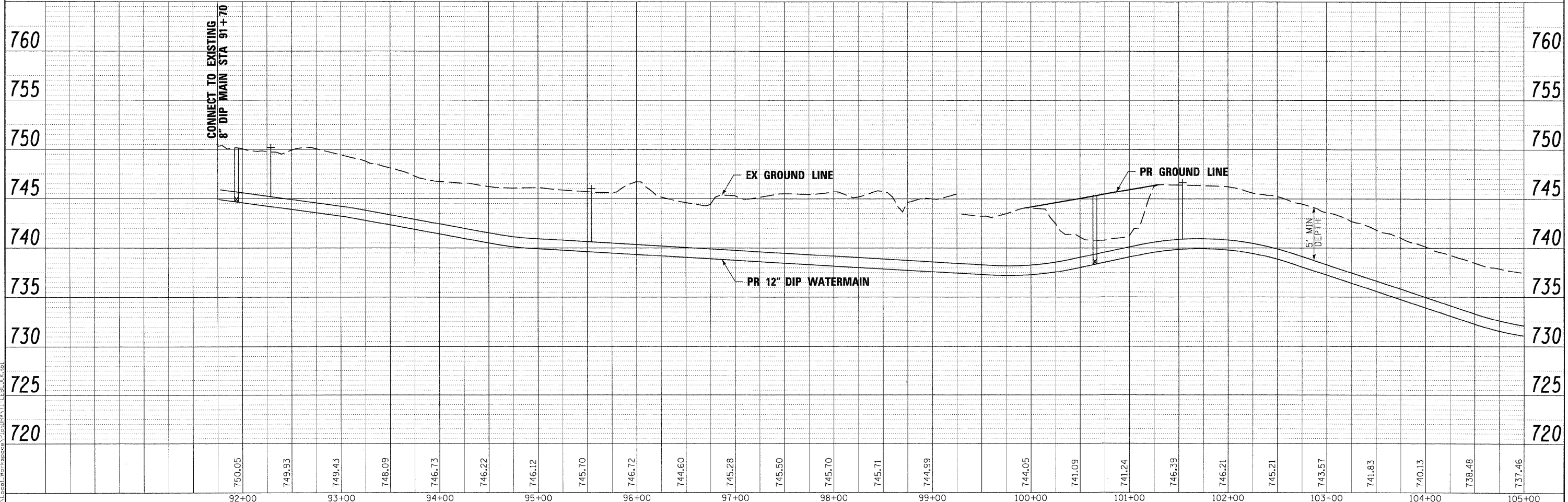


NOTE: CONTRACTOR TO COORDINATE WITH CITY TO CLOSE VALVES A+B. CITY TO OPERATE EXISTING VALVES. CONTRACTOR TO EXPEDITE WORK TO PUT MAIN BETWEEN VALVES A+B BACK IN SERVICE AS SOON AS POSSIBLE.



NOTE
SEE SHEET 149 FOR WATER MAIN GENERAL NOTES



DATE	
BY	
REVISIONS	
NO.	
DATE	
BY	
REVISIONS	
NO.	
DATE	
BY	
REVISIONS	
NO.	

DATE	
BY	
REVISIONS	
NO.	
DATE	
BY	
REVISIONS	
NO.	

PLOT SCALE: 1"=50'
X:\WORKSPACE\11\RedGate_50WM_PP.dgn
X:\WORKSPACE\11\RedGate_50WM_PP.dgn

FILE NAME =	DESIGNED - MAC	REVISED -		CITY OF ST. CHARLES	WATER MAIN PLAN & PROFILE RED GATE ROAD				F.A. RTE.	SECTION	COUNTY	TOTAL SHEETS	SHEET NO.
DRAWN - TMB	REVISED -	04-00092-00-BR							KANE	440	144		
USER NAME = tblank	CHECKED - RMT	REVISED -			SCALE: 1"=50" SHEET NO. 1 OF 10 SHEETS STA. TO STA.				CONTRACT NO. 63650				
DATE - 10/23/2011	REVISED -				ILLINOIS FED. AID PROJECT								