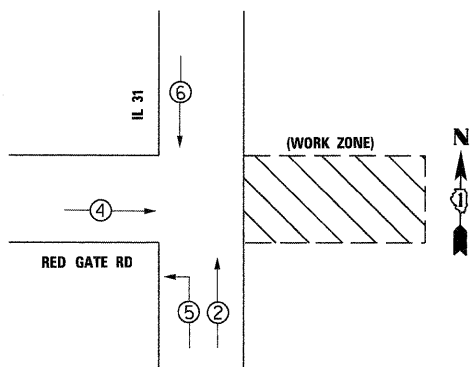
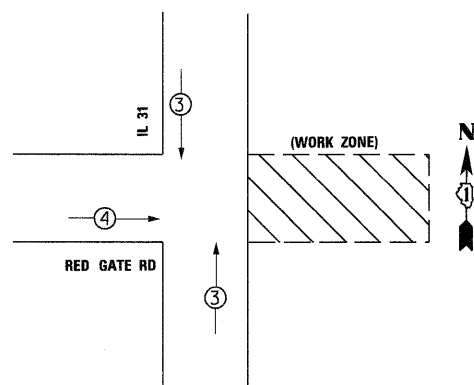


**TEMPORARY CONTROLLER SEQUENCE**



**TEMPORARY PHASE DESIGNATION DIAGRAM  
PRE-STAGE, STAGES 1 & 2**

**TEMPORARY EMERGENCY VEHICLE PREEMPTION  
SEQUENCE PRE-STAGE, STAGES 1 & 2**



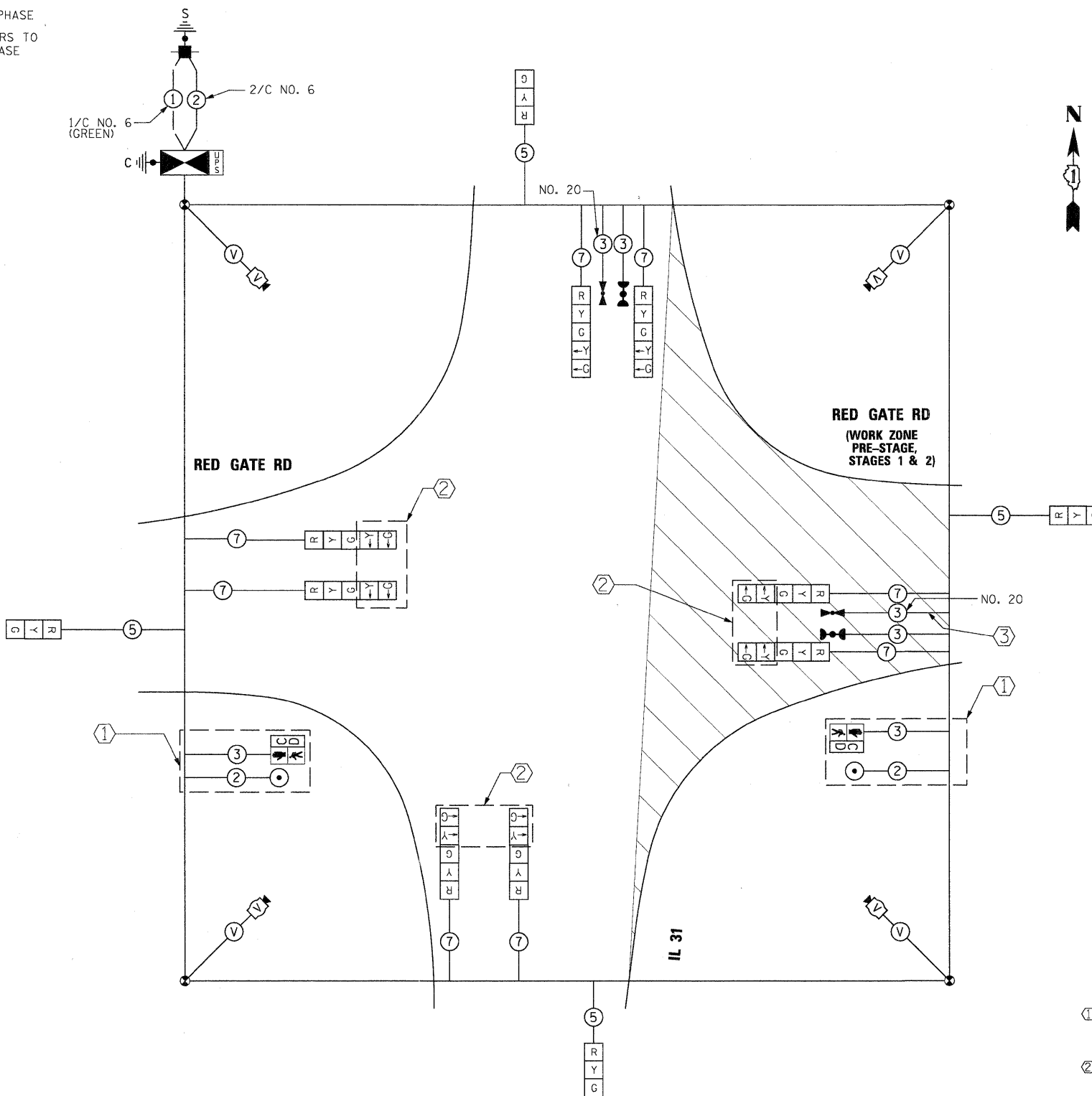
**TEMPORARY EMERGENCY VEHICLE PREEMPTORS  
PRE-STAGE, STAGES 1 & 2**

EMERGENCY VEHICLE PREEMPTORS	3	4
MOVEMENT	↑	→

I.D.O.T TRAFFIC SIGNAL INSTALLATION ELECTRICAL SERVICE REQUIREMENTS				TOTAL WATTAGE
TYPE	NO. LAMPS	WATTAGE INCAND. LED	%OPERATION	
SIGNAL (RED)	12	-	0.50	102
(YELLOW)	12	-	0.25	75
(GREEN)	12	-	0.25	45
ARROW	16	-	0.10	19
PED. SIGNAL	2	-	1.00	50
CONTROLLER	1	-	1.00	100
ILLUM. SIGN	0	25	0.05	-
VIDEO SYSTEM	1	150	1.00	150
FLASHER				0.50
ENERGY COSTS TO:				TOTAL = 541
<b>ILLINOIS DEPARTMENT OF TRANSPORTATION</b>				
201 W. CENTER COURT SCHAMBURG, ILLINOIS 60196				
ENERGY SUPPLY CONTACT:		GLYNN AMBURGEY		
PHONE:		630-377-4407		
COMPANY:		CITY OF ST. CHARLES		

**LEGEND**

- ⊙ DUAL ENTRY PHASE
- ⊠ SINGLE ENTRY PHASE
- OL OVERLAP
- ⊙ PEDESTRIAN PHASE
- \* - NUMBER REFERS TO ASSOCIATED PHASE



**TEMPORARY CABLE PLAN  
PRE-STAGE, STAGES 1 & 2**

**CONSTRUCTION NOTES:**

- ① TEMPORARY PEDESTRIAN SIGNALS SHALL BE BAGGED UNTIL THE PROPOSED SIDEWALK IS INSTALLED IN PRE-FINAL STAGE.
- ② LEFT-TURN ARROWS FOR RED GATE RD. SHALL BE BAGGED AND WILL NOT BE ACTIVATED UNTIL THE PRE-FINAL STAGE (EAST LEG OPEN TO TRAFFIC)
- ③ EVP FOR WESTBOUND RED GATE RD. SHALL NOT BE ACTIVATED UNTIL THE PRE-FINAL STAGE (EAST LEG OPEN TO TRAFFIC)

PLOT DATE = 11/22/2011  
 USER NAME = toddblank  
 FILE NAME = ...\\df1a-abc-sht-tempcable-IL31 Stage1.dgn  
 ...\\df1a-abc-sht-tempcable-IL31 Stage2.dgn  
 ...\\df1a-abc-sht-tempcable-IL31 Stage3.dgn  
 ...\\df1a-abc-sht-tempcable-IL31 Stage4.dgn  
 ...\\df1a-abc-sht-tempcable-IL31 Stage5.dgn  
 ...\\df1a-abc-sht-tempcable-IL31 Stage6.dgn  
 ...\\df1a-abc-sht-tempcable-IL31 Stage7.dgn  
 ...\\df1a-abc-sht-tempcable-IL31 Stage8.dgn  
 ...\\df1a-abc-sht-tempcable-IL31 Stage9.dgn  
 ...\\df1a-abc-sht-tempcable-IL31 Stage10.dgn  
 ...\\df1a-abc-sht-tempcable-IL31 Stage11.dgn  
 ...\\df1a-abc-sht-tempcable-IL31 Stage12.dgn  
 ...\\df1a-abc-sht-tempcable-IL31 Stage13.dgn  
 ...\\df1a-abc-sht-tempcable-IL31 Stage14.dgn  
 ...\\df1a-abc-sht-tempcable-IL31 Stage15.dgn  
 ...\\df1a-abc-sht-tempcable-IL31 Stage16.dgn  
 ...\\df1a-abc-sht-tempcable-IL31 Stage17.dgn  
 ...\\df1a-abc-sht-tempcable-IL31 Stage18.dgn  
 ...\\df1a-abc-sht-tempcable-IL31 Stage19.dgn  
 ...\\df1a-abc-sht-tempcable-IL31 Stage20.dgn  
 ...\\df1a-abc-sht-tempcable-IL31 Stage21.dgn  
 ...\\df1a-abc-sht-tempcable-IL31 Stage22.dgn  
 ...\\df1a-abc-sht-tempcable-IL31 Stage23.dgn  
 ...\\df1a-abc-sht-tempcable-IL31 Stage24.dgn  
 ...\\df1a-abc-sht-tempcable-IL31 Stage25.dgn  
 ...\\df1a-abc-sht-tempcable-IL31 Stage26.dgn  
 ...\\df1a-abc-sht-tempcable-IL31 Stage27.dgn  
 ...\\df1a-abc-sht-tempcable-IL31 Stage28.dgn  
 ...\\df1a-abc-sht-tempcable-IL31 Stage29.dgn  
 ...\\df1a-abc-sht-tempcable-IL31 Stage30.dgn  
 ...\\df1a-abc-sht-tempcable-IL31 Stage31.dgn  
 ...\\df1a-abc-sht-tempcable-IL31 Stage32.dgn  
 ...\\df1a-abc-sht-tempcable-IL31 Stage33.dgn  
 ...\\df1a-abc-sht-tempcable-IL31 Stage34.dgn  
 ...\\df1a-abc-sht-tempcable-IL31 Stage35.dgn  
 ...\\df1a-abc-sht-tempcable-IL31 Stage36.dgn  
 ...\\df1a-abc-sht-tempcable-IL31 Stage37.dgn  
 ...\\df1a-abc-sht-tempcable-IL31 Stage38.dgn  
 ...\\df1a-abc-sht-tempcable-IL31 Stage39.dgn  
 ...\\df1a-abc-sht-tempcable-IL31 Stage40.dgn  
 ...\\df1a-abc-sht-tempcable-IL31 Stage41.dgn  
 ...\\df1a-abc-sht-tempcable-IL31 Stage42.dgn  
 ...\\df1a-abc-sht-tempcable-IL31 Stage43.dgn  
 ...\\df1a-abc-sht-tempcable-IL31 Stage44.dgn  
 ...\\df1a-abc-sht-tempcable-IL31 Stage45.dgn  
 ...\\df1a-abc-sht-tempcable-IL31 Stage46.dgn  
 ...\\df1a-abc-sht-tempcable-IL31 Stage47.dgn  
 ...\\df1a-abc-sht-tempcable-IL31 Stage48.dgn  
 ...\\df1a-abc-sht-tempcable-IL31 Stage49.dgn  
 ...\\df1a-abc-sht-tempcable-IL31 Stage50.dgn  
 ...\\df1a-abc-sht-tempcable-IL31 Stage51.dgn  
 ...\\df1a-abc-sht-tempcable-IL31 Stage52.dgn  
 ...\\df1a-abc-sht-tempcable-IL31 Stage53.dgn  
 ...\\df1a-abc-sht-tempcable-IL31 Stage54.dgn  
 ...\\df1a-abc-sht-tempcable-IL31 Stage55.dgn  
 ...\\df1a-abc-sht-tempcable-IL31 Stage56.dgn  
 ...\\df1a-abc-sht-tempcable-IL31 Stage57.dgn  
 ...\\df1a-abc-sht-tempcable-IL31 Stage58.dgn  
 ...\\df1a-abc-sht-tempcable-IL31 Stage59.dgn  
 ...\\df1a-abc-sht-tempcable-IL31 Stage60.dgn  
 ...\\df1a-abc-sht-tempcable-IL31 Stage61.dgn  
 ...\\df1a-abc-sht-tempcable-IL31 Stage62.dgn  
 ...\\df1a-abc-sht-tempcable-IL31 Stage63.dgn  
 ...\\df1a-abc-sht-tempcable-IL31 Stage64.dgn  
 ...\\df1a-abc-sht-tempcable-IL31 Stage65.dgn  
 ...\\df1a-abc-sht-tempcable-IL31 Stage66.dgn  
 ...\\df1a-abc-sht-tempcable-IL31 Stage67.dgn  
 ...\\df1a-abc-sht-tempcable-IL31 Stage68.dgn  
 ...\\df1a-abc-sht-tempcable-IL31 Stage69.dgn  
 ...\\df1a-abc-sht-tempcable-IL31 Stage70.dgn  
 ...\\df1a-abc-sht-tempcable-IL31 Stage71.dgn  
 ...\\df1a-abc-sht-tempcable-IL31 Stage72.dgn  
 ...\\df1a-abc-sht-tempcable-IL31 Stage73.dgn  
 ...\\df1a-abc-sht-tempcable-IL31 Stage74.dgn  
 ...\\df1a-abc-sht-tempcable-IL31 Stage75.dgn  
 ...\\df1a-abc-sht-tempcable-IL31 Stage76.dgn  
 ...\\df1a-abc-sht-tempcable-IL31 Stage77.dgn  
 ...\\df1a-abc-sht-tempcable-IL31 Stage78.dgn  
 ...\\df1a-abc-sht-tempcable-IL31 Stage79.dgn  
 ...\\df1a-abc-sht-tempcable-IL31 Stage80.dgn  
 ...\\df1a-abc-sht-tempcable-IL31 Stage81.dgn  
 ...\\df1a-abc-sht-tempcable-IL31 Stage82.dgn  
 ...\\df1a-abc-sht-tempcable-IL31 Stage83.dgn  
 ...\\df1a-abc-sht-tempcable-IL31 Stage84.dgn  
 ...\\df1a-abc-sht-tempcable-IL31 Stage85.dgn  
 ...\\df1a-abc-sht-tempcable-IL31 Stage86.dgn  
 ...\\df1a-abc-sht-tempcable-IL31 Stage87.dgn  
 ...\\df1a-abc-sht-tempcable-IL31 Stage88.dgn  
 ...\\df1a-abc-sht-tempcable-IL31 Stage89.dgn  
 ...\\df1a-abc-sht-tempcable-IL31 Stage90.dgn  
 ...\\df1a-abc-sht-tempcable-IL31 Stage91.dgn  
 ...\\df1a-abc-sht-tempcable-IL31 Stage92.dgn  
 ...\\df1a-abc-sht-tempcable-IL31 Stage93.dgn  
 ...\\df1a-abc-sht-tempcable-IL31 Stage94.dgn  
 ...\\df1a-abc-sht-tempcable-IL31 Stage95.dgn  
 ...\\df1a-abc-sht-tempcable-IL31 Stage96.dgn  
 ...\\df1a-abc-sht-tempcable-IL31 Stage97.dgn  
 ...\\df1a-abc-sht-tempcable-IL31 Stage98.dgn  
 ...\\df1a-abc-sht-tempcable-IL31 Stage99.dgn  
 ...\\df1a-abc-sht-tempcable-IL31 Stage100.dgn

DESIGNED - BC	REVISED -
DRAWN - BC	REVISED -
CHECKED - MPM	REVISED -
DATE - 10/23/2011	REVISED -



**CITY OF ST. CHARLES**

**TEMPORARY CABLE PLAN IL 31 AT RED GATE RD  
PRE-STAGE, STAGES 1 & 2**

SCALE: NTS SHEET NO. 4 OF 12 SHEETS TOTAL TOTALS: N/A

F.A. RTE.	SECTION	COUNTY	TOTAL SHEETS	SHEET NO.
	04-00092-00-BR	KANE	440	190
CONTRACT NO. 63650				
ILLINOIS FED. AID PROJECT				