

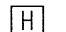


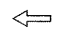
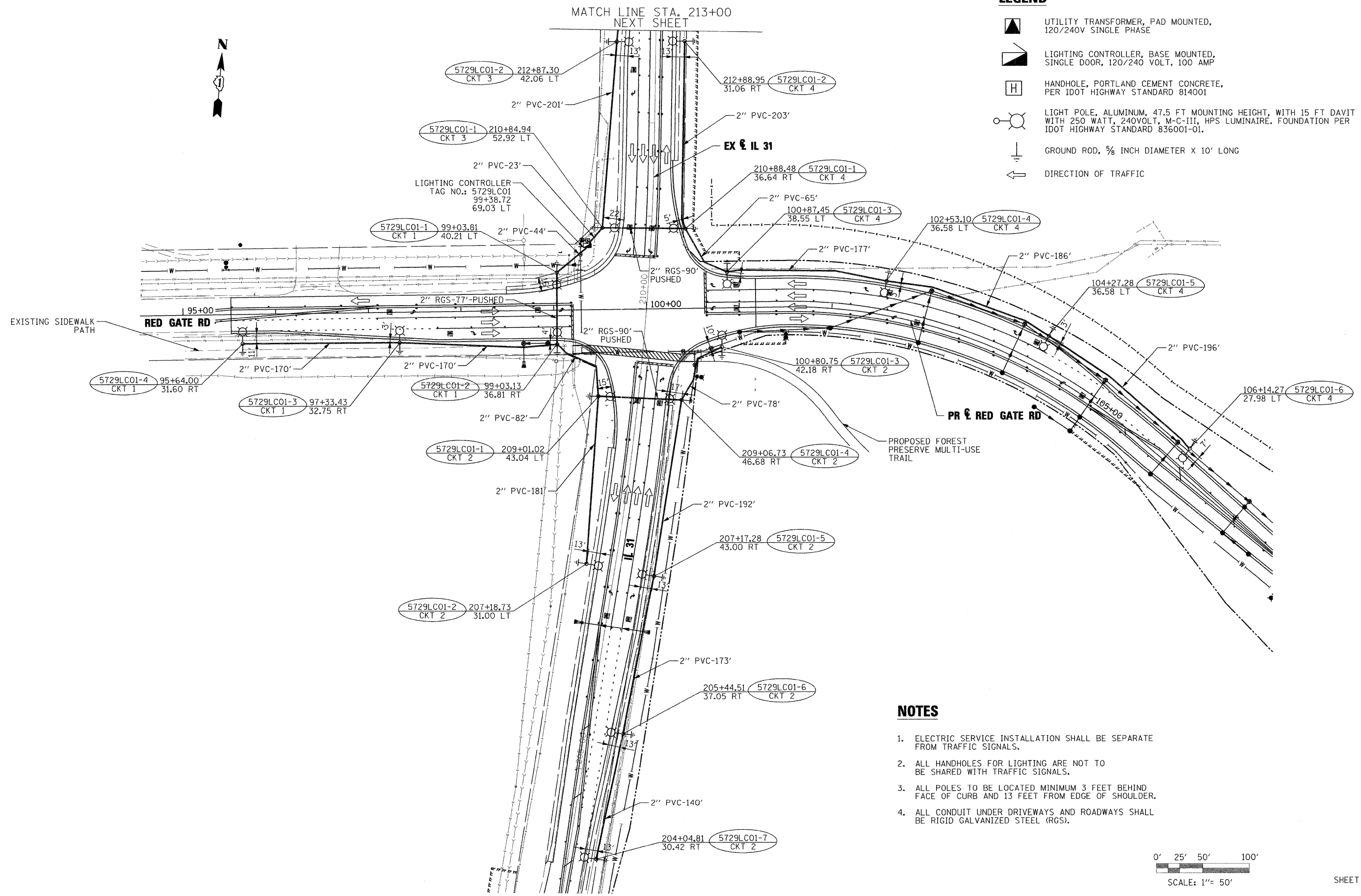


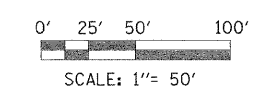
LEGEND

-  UTILITY TRANSFORMER, PAD MOUNTED, 120/240V SINGLE PHASE
-  LIGHTING CONTROLLER, BASE MOUNTED, SINGLE DOOR, 120/240 VOLT, 100 AMP
-  HANDHOLE, PORTLAND CEMENT CONCRETE, PER IDOT HIGHWAY STANDARD 814001
-  LIGHT POLE, ALUMINUM, 47.5 FT MOUNTING HEIGHT, WITH 15 FT DAVIT ARM WITH 250 WATT, 240VOLT, M-C-III, HPS LUMINAIRE. FOUNDATION PER IDOT HIGHWAY STANDARD 836001-01.
-  GROUND ROD, 5/8 INCH DIAMETER X 10' LONG
-  DIRECTION OF TRAFFIC



NOTES

1. ELECTRIC SERVICE INSTALLATION SHALL BE SEPARATE FROM TRAFFIC SIGNALS.
2. ALL HANDHOLES FOR LIGHTING ARE NOT TO BE SHARED WITH TRAFFIC SIGNALS.
3. ALL POLES TO BE LOCATED MINIMUM 3 FEET BEHIND FACE OF CURB AND 13 FEET FROM EDGE OF SHOULDER.
4. ALL CONDUIT UNDER DRIVEWAYS AND ROADWAYS SHALL BE RIGID GALVANIZED STEEL (RGS).



SHEET L-3

PLOT SCALE: HSB
 X:\000005\0002\Local\workspace\P10101A\01m\P10101B FULL SIZE.dwg
 X:\000005\0002\Local\workspace\P10101A\01m\P10101B.dwg

FILE NAME =	DESIGNED - BC	REVISED -
...prpIn-ABC-sht-IL-31-Redgate-light-cond.dwg	DRAWN - BC	REVISED -
USER NAME = mcoleman	CHECKED - MPM	REVISED -
PLOT DATE = 12/8/2011	DATE - 10/23/2011	REVISED -



CITY OF ST. CHARLES

**PROPOSED LIGHTING AND CONDUIT PLAN
IL RTE 31 & RED GATE ROAD**

SCALE: SHEET NO. 3 OF 10 SHEETS STA. TO STA.

F.A. RTE.	SECTION	COUNTY	TOTAL SHEETS	SHEET NO.
	04-0092-00-BR	KANE	440	211
CONTRACT NO. 63650			ILLINOIS FED. AID PROJECT	