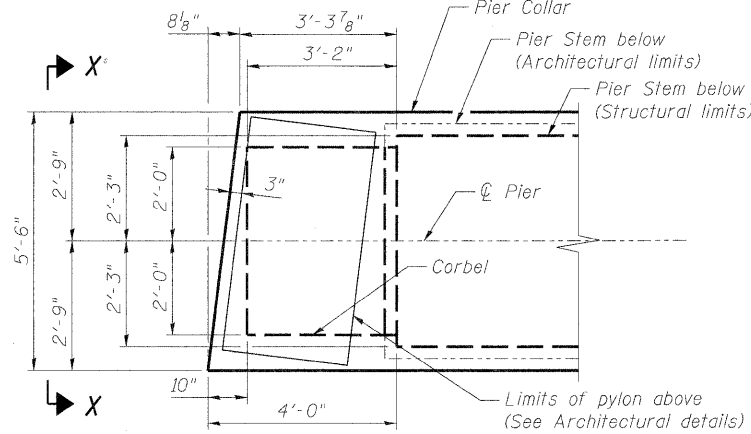
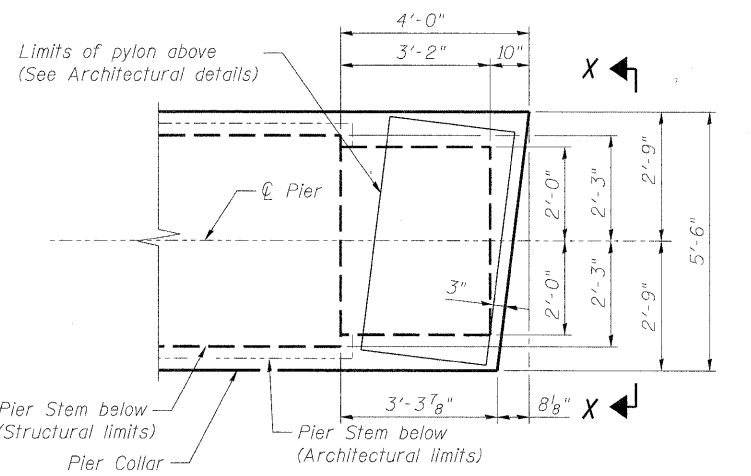


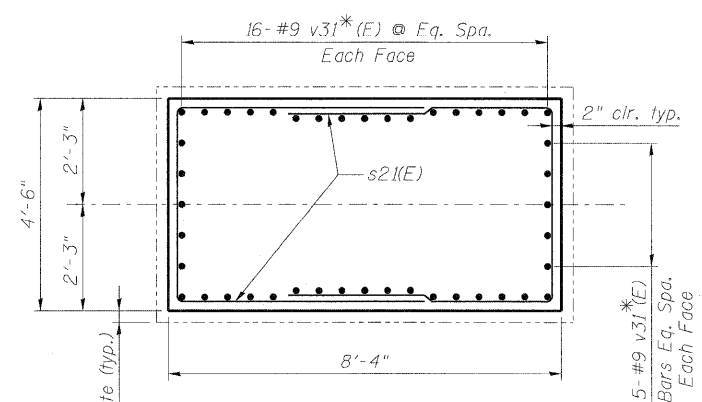
**SECTION A-A**



**DETAIL 1**

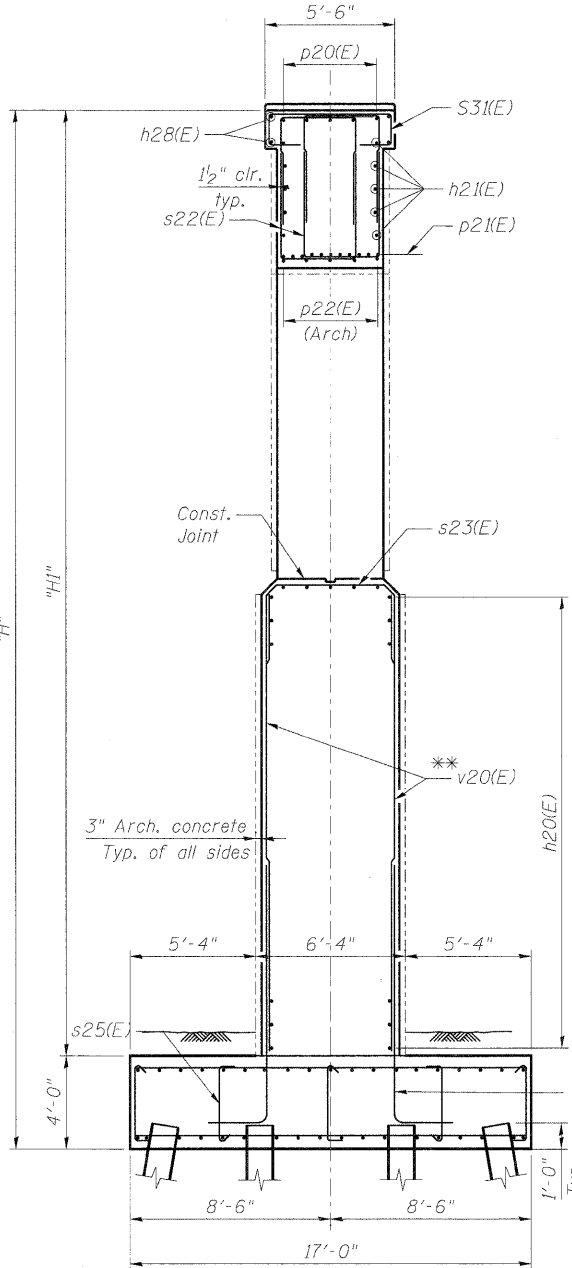


**DETAIL 2**

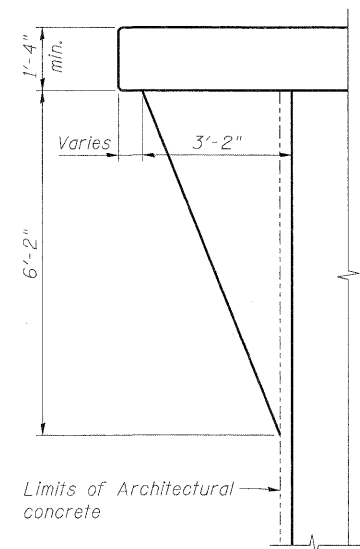


**SECTION B-B**

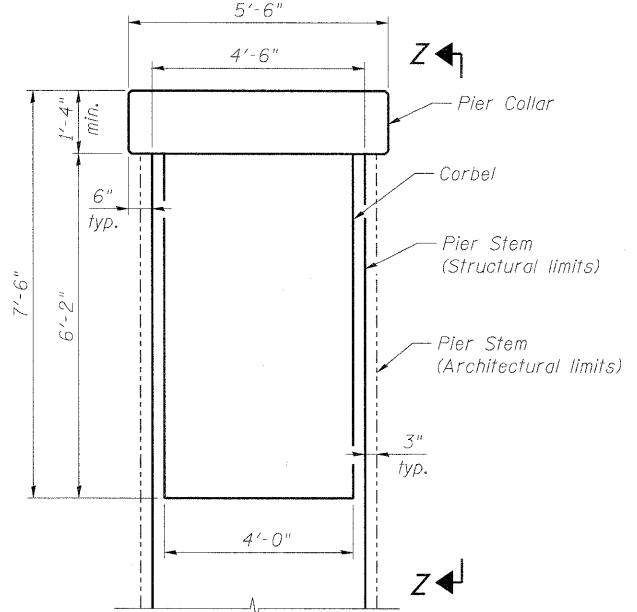
\* Bars v24(E) for Pier 6  
 \* Bars v25(E) for Pier 7  
 \* Bars v31(E) for Pier 1 thru 5



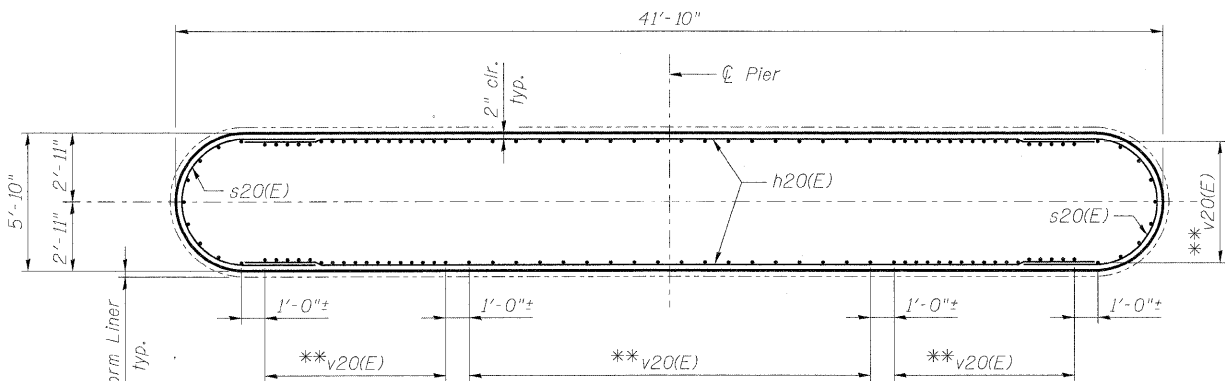
**SECTION D-D**  
 (At  $\phi$  Pier)



**VIEW Z-Z**



**VIEW X-X**



**SECTION C-C**

\*\* or v21(E), v22(E)

**NOTES:**

1. See sheet S41 thru S43 for pier plan and elevations.
2. For Bill of Materials, see sheet S46 and S47.
3. All clearance dimensions to reinforcement shall be measured from the structural limits of the pier. Architectural Concrete shall be paid for as "Concrete Structures."

**benesch**  
 engineers - scientists - planners  
 Alfred Benesch & Company  
 205 North Michigan Avenue, Suite 2400  
 Chicago, Illinois 60601  
 312-565-0450 Job No. 10092

FILE NAME =	USER NAME = akaeschall	DESIGNED - MJF	REVISD -
0456024_044_PierDtls4.dgn		CHECKED - AJK	REVISD -
	PLOT SCALE =	DRAWN - RMG	REVISD -
	PLOT DATE = 11/9/2011	CHECKED - AJK	REVISD -



**CITY OF ST. CHARLES**

**PIER DETAILS**  
**STRUCTURE NO. 045-6024 RED GATE ROAD OVER THE FOX RIVER**  
 SHEET NO. S44 OF S56 SHEETS

F.A.I. RTE.	SECTION	COUNTY	TOTAL SHEETS	SHEET NO.
	04-00092-00-BR	KANE	440	266
CONTRACT NO. 63650				
ILLINOIS FED. AID PROJECT				