

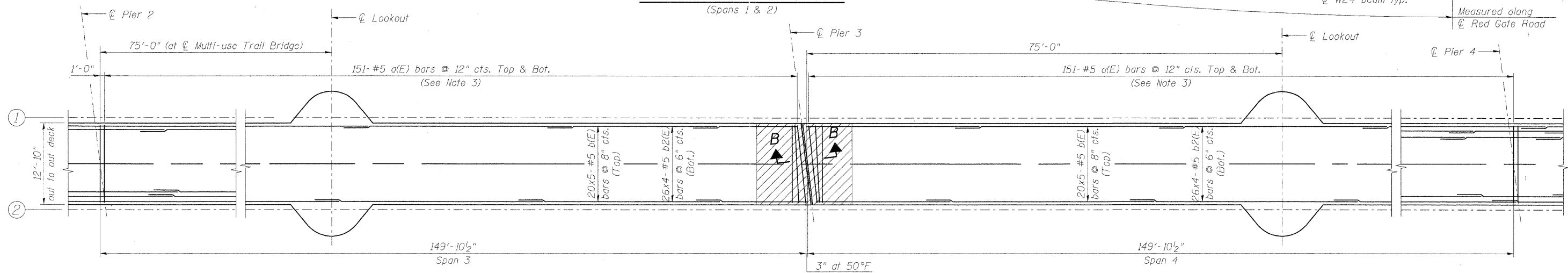
**NOTES:**

1. Edge beam reinforcement at Abutments and Pier 3 not shown for clarity. See Section A-A and Section B-B on Sheet SM5.
2. For details of reinforcement in Lookouts, see Sheet SM5.
3. Fan d(E) bars at Pier 3 to fit along skew.
4. Bars indicated thus 20x7-#5 etc., indicates 20 lines of bars with 7 lengths per line.

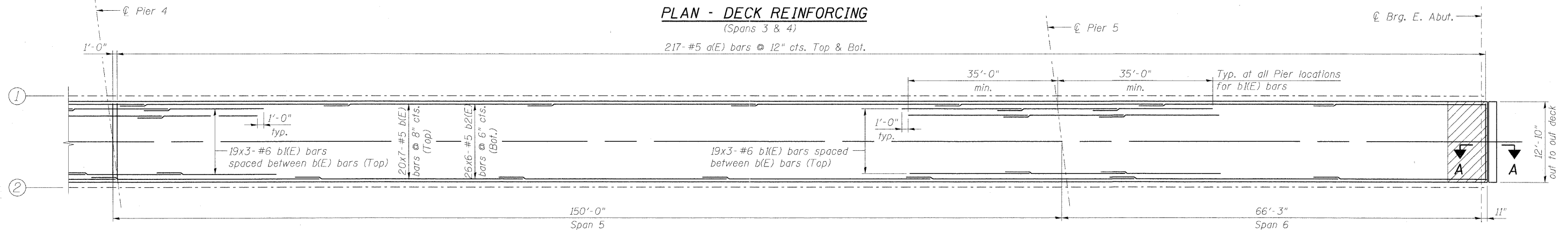
**MINIMUM BAR LAP**  
(Slab)  
#5 bar = 3'-3"  
#6 bar = 3'-10"

Indicates Conventional Formwork in lieu of metal decking to accommodate expansion joint. See sheet SM7.

**PLAN - DECK REINFORCING**  
(Spans 1 & 2)



**PLAN - DECK REINFORCING**  
(Spans 3 & 4)



**PLAN - DECK REINFORCING**  
(Spans 5 & 6)

**benesch**  
engineers · scientists · planners  
Alfred Benesch & Company  
205 North Michigan Avenue, Suite 2400  
Chicago, Illinois 60601  
312-565-0450 Job No. 10092

FILE NAME = 0456020.03_DeckPL1.dgn	USER NAME = akeaschal	DESIGNED - JLS	REVISED -
		CHECKED - LRB	REVISED -
	PLOT SCALE =	DRAWN - RMG	REVISED -
	PLOT DATE = 11/10/2011	CHECKED - AJK	REVISED -



**CITY OF ST. CHARLES**

**WALKWAY DECK REINFORCEMENT PLAN**  
**STRUCTURE NO. 045-6020 MULTI-USE TRAIL BRIDGE OVER FOX RIVER**  
SHEET NO. SM3 OF SM19 SHEETS

F.A.I. RTE.	SECTION	COUNTY	TOTAL SHEETS	SHEET NO.
	04-00092-00-BR	KANE	440	281
CONTRACT NO. 63650			ILLINOIS FED. AID PROJECT	

4:12:05 PM x:\10000s\10092\engineering\documents\redgatephases1\pedbridgeoverfoxriver\plans\0456020.03\_DeckPL1.dgn 11/10/2011