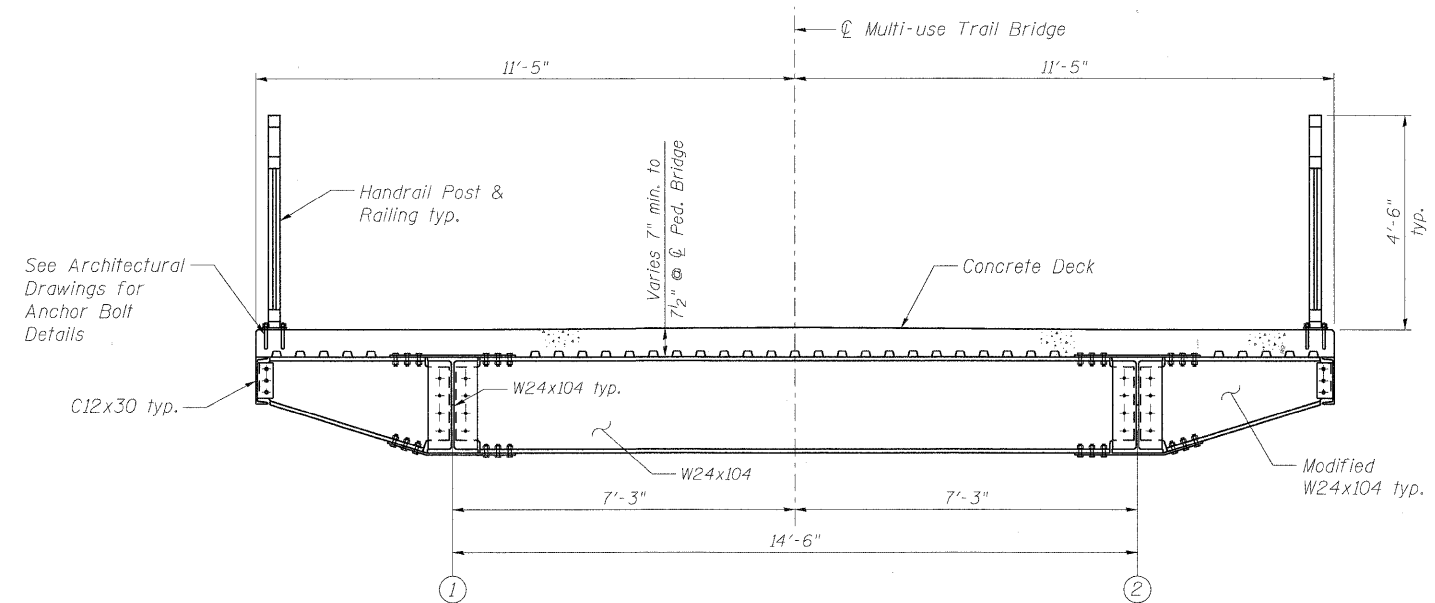
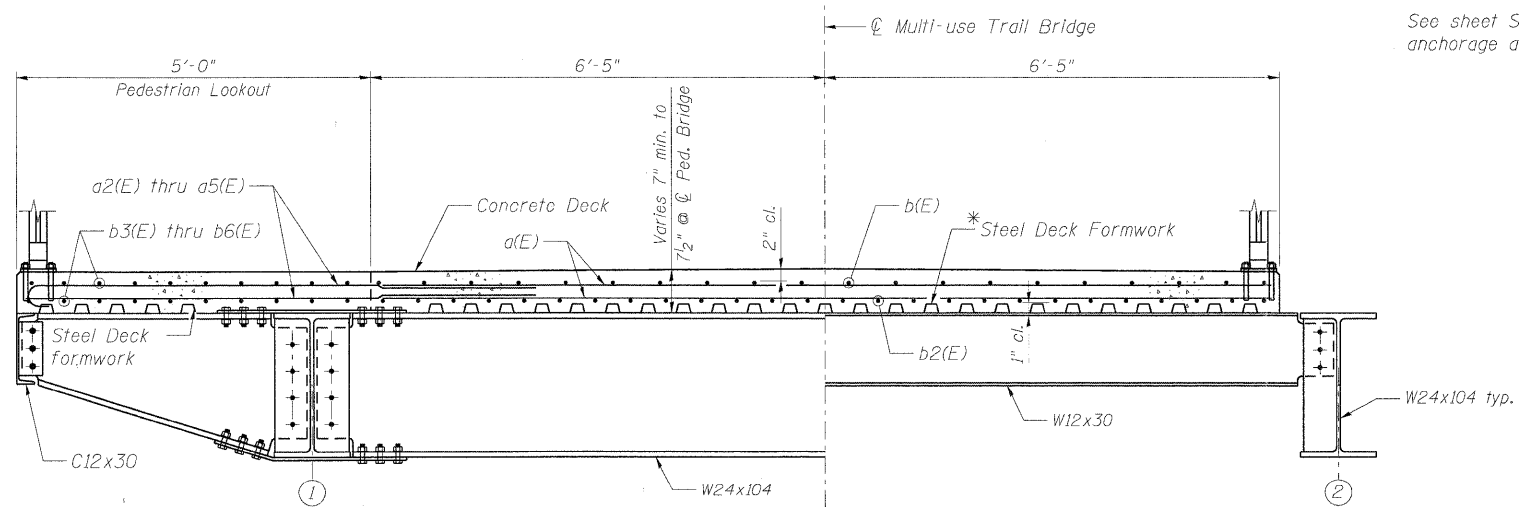


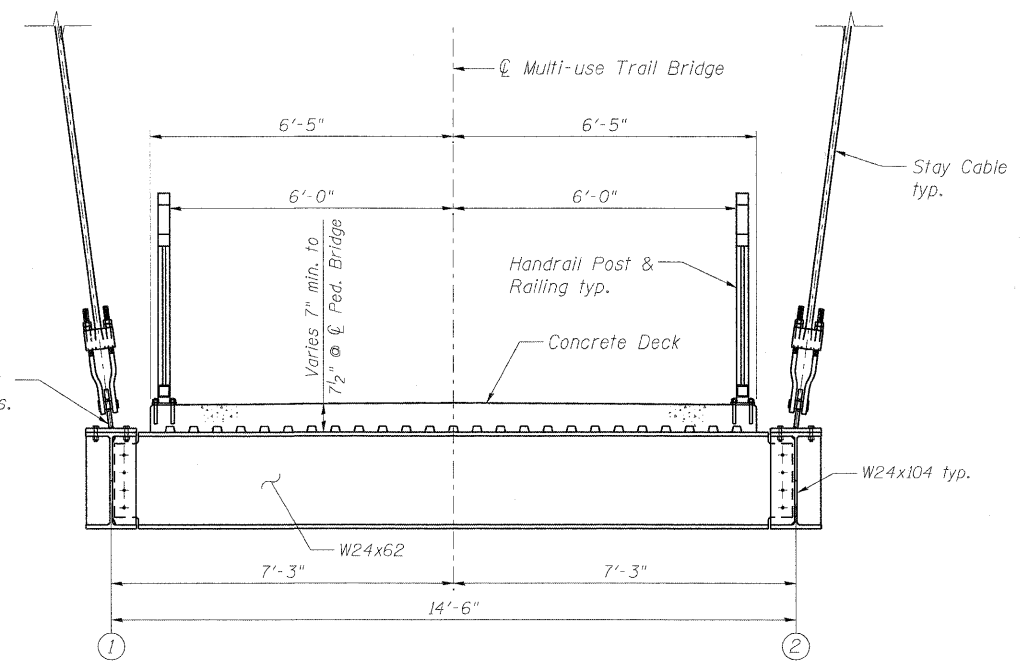
PIERS 1, 2, 4 & 5 PIER 3
MULTI-USE TRAIL BRIDGE SECTION AT PIERS
 (Looking East)



MULTI-USE TRAIL BRIDGE SECTION AT LOOKOUTS
 (Looking East)



SECTION AT PEDESTRIAN LOOKOUT **TYPICAL SECTION THRU WALKWAY**
DECK CROSS SECTION
 (Looking East)



MULTI-USE TRAIL BRIDGE SECTION AT STAY ANCHORS
 (Looking East)

NOTES:

1. The 7" slab (noncomposite) consists of 5 1/2" concrete on 1 1/2" tall stay in place, 16 gage, galvanized steel deck formwork. Steel deck formwork valleys to be spaced at 6" cts. to match bottom steel reinforcement spacing. Steel deck formwork shall have a minimum yield strength of 40 ksi and minimum section modulus of 0.411 in ³/ft. Deck must be continuous over a minimum of 3 spans.
2. Deck reinforcing shown only in "Deck Cross Section" for clarity.
3. Lateral bracing at bottom of main girders not shown for clarity.
4. See Architecture Plans for Handrail Post & Railing details.
5. The top surface of the concrete shall be finished according to Article 424.06 of the Standard Specifications, except the surface shall not be grooved.

* Cost of stay-in-place metal decking shall be included with the Cost of "Concrete Superstructures."

benesch
 engineers · scientists · planners
 Alfred Benesch & Company
 205 North Michigan Avenue, Suite 2400
 Chicago, Illinois 60601
 312-565-0450 Job No. 10092

FILE NAME =	USER NAME = akoeschall	DESIGNED - JLS	REVISED -
0456020_04_DeckXSec.dgn	PLLOT SCALE =	CHECKED - LRB	REVISED -
	PLLOT DATE = 11/10/2011	DRAWN - RMG	REVISED -
		CHECKED - AJK	REVISED -



CITY OF ST. CHARLES

WALKWAY DECK CROSS SECTIONS
STRUCTURE NO. 045-6020 MULTI-USE TRAIL BRIDGE OVER FOX RIVER
 SHEET NO. SM4 OF SM19 SHEETS

F.A.I. RTE.	SECTION	COUNTY	TOTAL SHEETS	SHEET NO.
	04-00092-00-BR	KANE	440	282
			CONTRACT NO. 63650	
ILLINOIS FED. AID PROJECT				

x:\10000s\10092\engineering\documents\redgatephase1\pedbridgeoverfoxriver\final\plans\0456020_04_DeckXSec.dgn 4:12:10 PM 11/10/2011