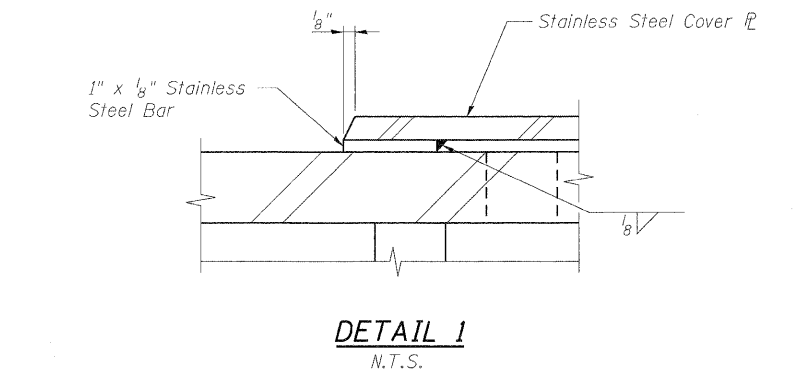
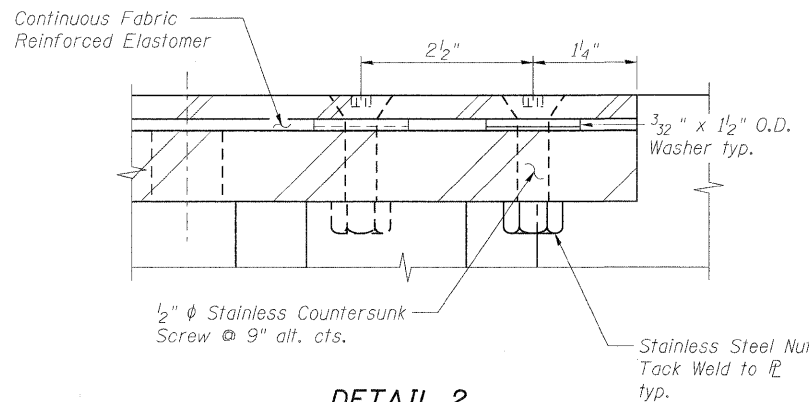


SECTION AT EXPANSION JOINT

Location	Rolled Rail	
	"A"	"B"
W. Abut.	2"	2 1/2"
Pier 3	2 1/2"	3"
E. Abut.	2"	2 1/2"



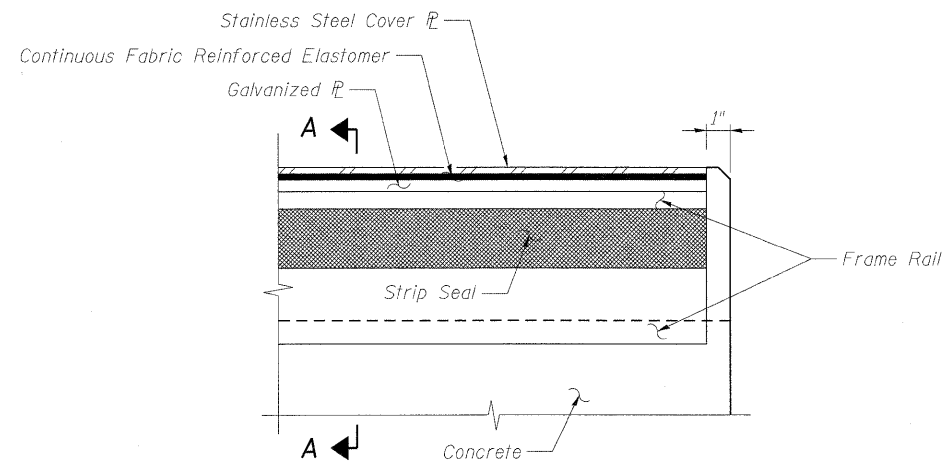
DETAIL 1
N.T.S.



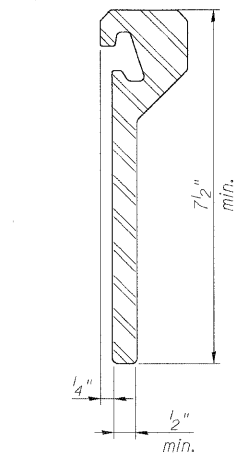
DETAIL 2
N.T.S.

NOTES:

1. The strip seal shall be made continuous and shall have a minimum thickness of 1/4". The configuration of the strip seal shall match the configuration of the Locking Edge Rails. Open or "webbed" strip seal gland configurations are not permitted. The gland shall be sized for a maximum rated movement of 4 inches.
2. The Locking Edge Rails depicted are conceptual only, except for the minimum dimensions shown. The actual configuration of the Locking Edge Rails and matching strip seal may vary from manufacturer to manufacturer. Flanged edge rails will not be allowed. Locking Edge Rails may be spliced at slope discontinuities.
3. The manufacturer's recommended installation methods shall be followed.
4. The joint opening and deck dimensions detailed on the superstructure are based on a rolled rail expansion joint.
5. All steel components shall be galvanized after fabrication according to Article 520.03 of the Standard Specifications.
6. Space railing posts at expansion joints to miss cover plates.



ELEVATION
(@ @ Joint)



ROLLED EXTRUDED RAIL

BILL OF MATERIAL

Item	Unit	Total
Preformed Joint Strip Seal	Foot	39.0

benesch
engineers · scientists · planners
Alfred Benesch & Company
205 North Michigan Avenue, Suite 2400
Chicago, Illinois 60601
312-565-0450 Job No. 10092

FILE NAME =	USER NAME =	DESIGNED -	REVISED -
0456020_06.Exp.J10.tls.dgn	akeaschell	JLS	-
	PLOT SCALE =	CHECKED -	REVISED -
		LRB	-
	PLOT DATE =	DRAWN -	REVISED -
	11/10/2011	RMG	-
		CHECKED -	REVISED -
		AJK	-



CITY OF ST. CHARLES

PREFORMED JOINT STRIP SEAL
STRUCTURE NO. 045-6020 MULTI-USE TRAIL BRIDGE OVER FOX RIVER

SHEET NO. SM6 OF SM19 SHEETS

F.A.I. RTE.	SECTION	COUNTY	TOTAL SHEETS	SHEET NO.
	04-00092-00-BR	KANE	440	284
				CONTRACT NO. 63650
ILLINOIS FED. AID PROJECT				