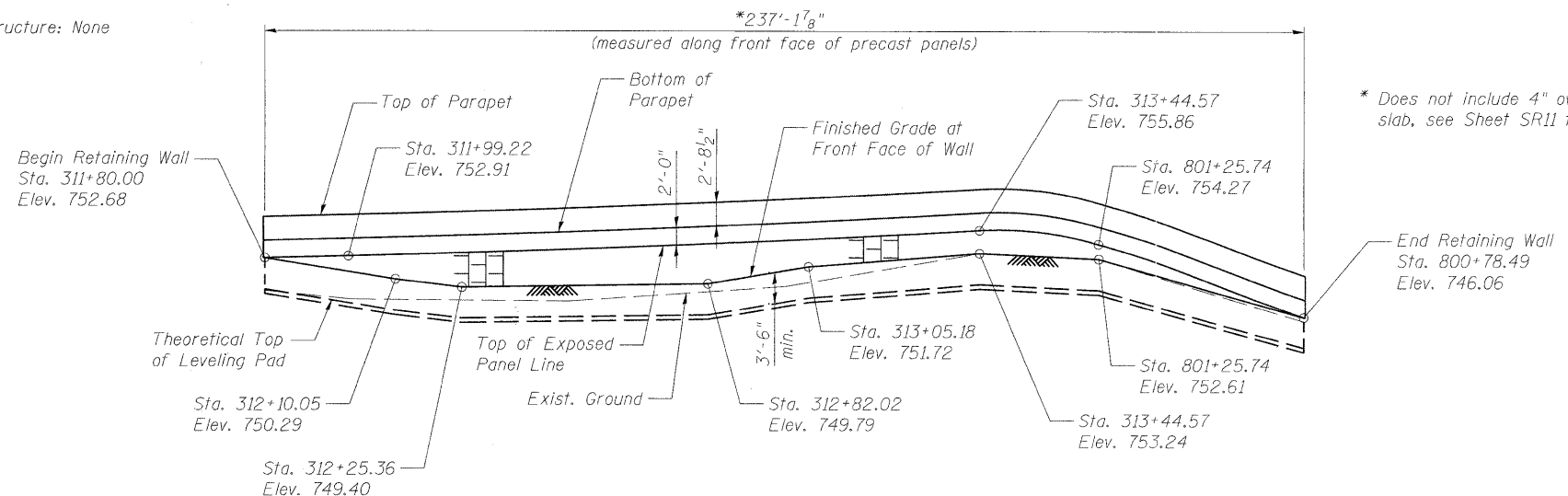


Benchmark: Steel Rod at GPS Monument KAN31 2B (Elev. 754.27)

Existing Structure: None

No Salvage



* Does not include 4" overhang on moment slab, see Sheet SR11 for details.

ELEVATION
(Reflected View, 2:1 Vertical Scale)

CURVE DATA

(IL25CUR3)
 PI = Sta. 313+16.36
 $\Delta = 10^{\circ}02'46.60''$ (LT)
 R = 2,462.03'
 T = 216.40'
 L = 431.69'
 E = 9.49'
 e = NC
 TR = N/A
 SE Run = N/A
 PC = Sta. 310+99.96
 PT = Sta. 315+31.65

DESIGN SPECIFICATIONS

2010 AASHTO LRFD Bridge Design Specifications

CONSTRUCTION SPECIFICATIONS

Standard Specifications for the State of Illinois

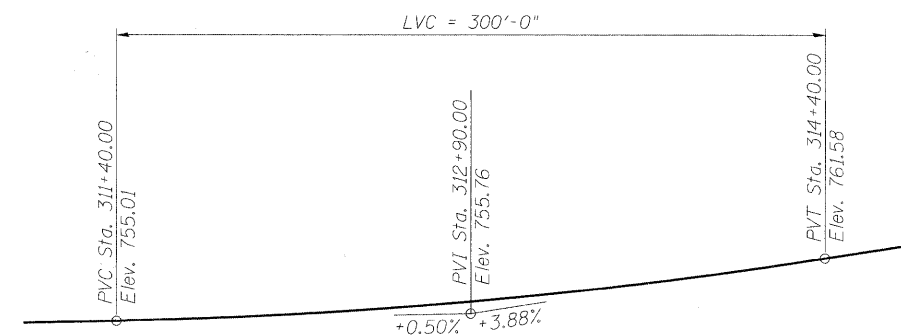
DESIGN STRESSES

FIELD UNITS

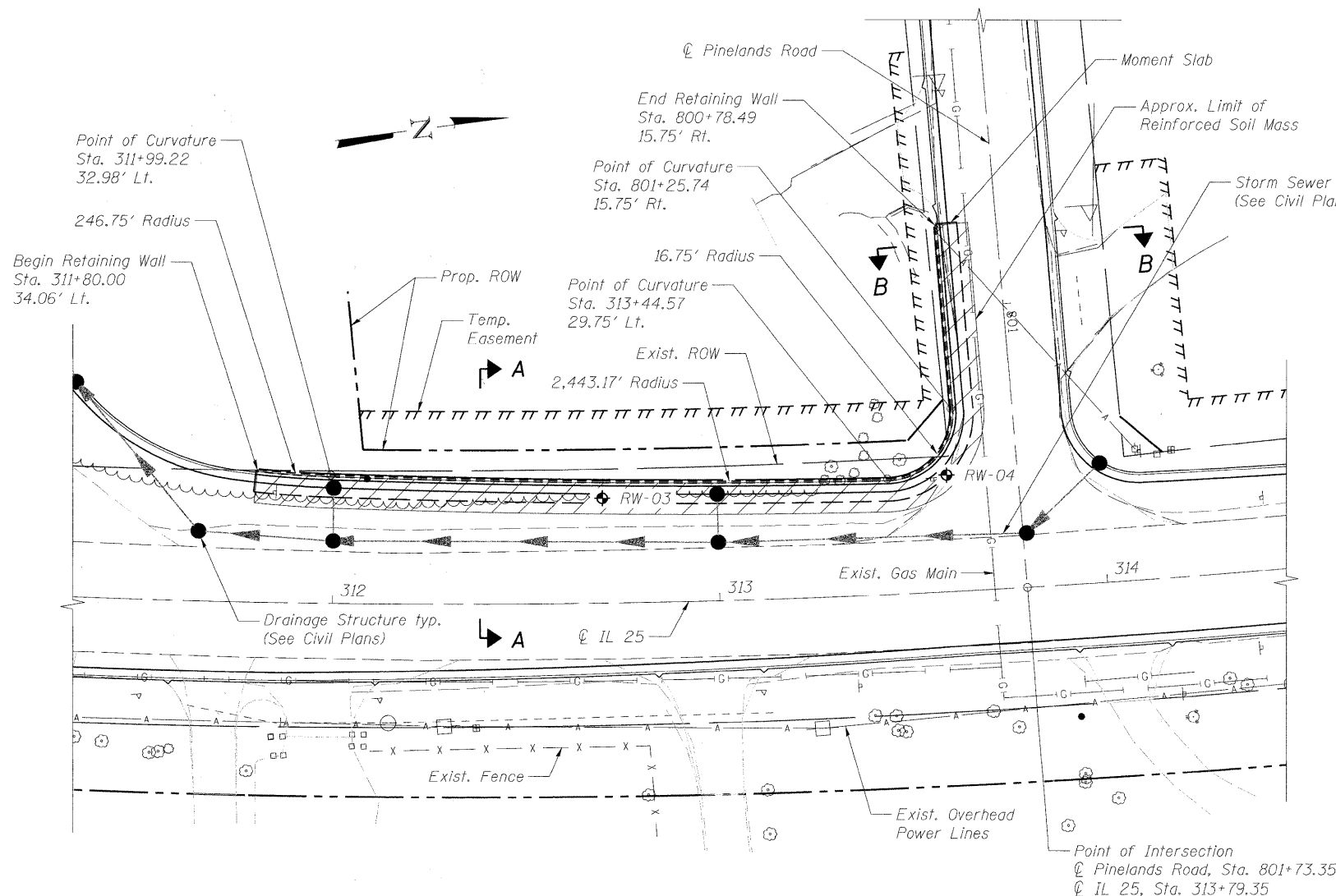
Reinforced Concrete:
 f'_c = Compressive Strength = 3,500 psi
 Reinforcing Bars:
 f_y = Yield Strength (Grade 60) = 60,000 psi

PRECAST UNITS

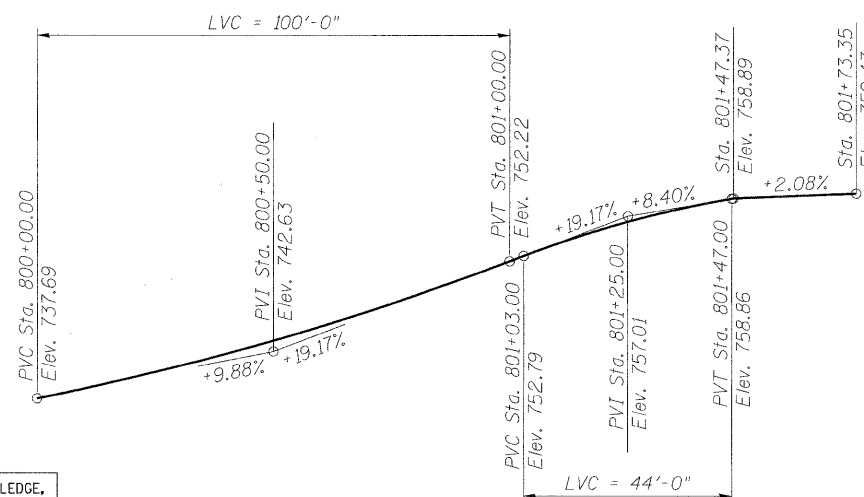
Precast Panels:
 f'_c = Compressive Strength = 4,500 psi



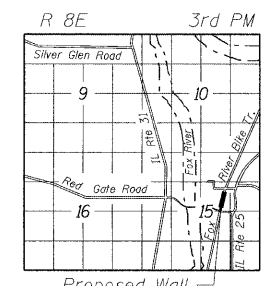
IL 25 PROFILE GRADE
(4:1 Vertical Scale, Along $\text{\textcircled{C}}$)



PLAN



PINELANDS ROAD PROFILE GRADE
(2:1 Vertical Scale, Along $\text{\textcircled{C}}$)



LOCATION SKETCH

I CERTIFY THAT TO THE BEST OF MY KNOWLEDGE, INFORMATION AND BELIEF, THIS BRIDGE IS STRUCTURALLY ADEQUATE FOR THE DESIGN LOADINGS SHOWN ON THE PLANS. THE DESIGN IS AN ECONOMICAL ONE FOR THE STYLE OF STRUCTURE AND COMPLIES WITH REQUIREMENTS OF THE CURRENT AASHTO STANDARD SPECIFICATIONS FOR HIGHWAY BRIDGES.



EXPIRATION DATE 11-30-12
 DATE OCTOBER 20, 2011

ALFRED BENESCH & COMPANY

NOTES:

1. For Section A-A and B-B see Sheet SR10.
2. See Special Provisions for Mechanically Stabilized Earth Retaining Wall for design and construction requirements.
3. Stations, offsets, and radii are given at the front face of precast panels.
4. See Intersection Details in Civil Plans for edge of pavement elevations.



Alfred Benesch & Company
 205 North Michigan Avenue, Suite 2400
 Chicago, Illinois 60601
 312-565-0450 Job No. 10092

FILE NAME = PINELANDS_WALLS_001_GP.dgn

USER NAME = akesschall
 DESIGNED - MFH
 CHECKED - AJK
 DRAWN - MFH
 CHECKED - HMA
 PLOT SCALE =
 PLOT DATE = 11/9/2011

DESIGNED - MFH
 CHECKED - AJK
 DRAWN - MFH
 CHECKED - HMA

REVISED -
 REVISED -
 REVISED -
 REVISED -



CITY OF ST. CHARLES

PLAN AND ELEVATION
 RETAINING WALL AT IL 25 AND PINELANDS ROAD

SHEET NO. SR9 OF SR13 SHEETS

F.A.I. RTE.	SECTION	COUNTY	TOTAL SHEETS	SHEET NO.
	04-0092-00-BR	KANE	440	307
			CONTRACT NO. 63650	
ILLINOIS FED. AID PROJECT				

x:\100200s\10092\engineer-ing-documents\redgate\phase1\retaining walls\pinelands WALLS_001_GP.dgn 3:21:55 PM 11/9/2011