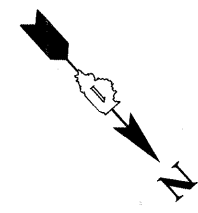
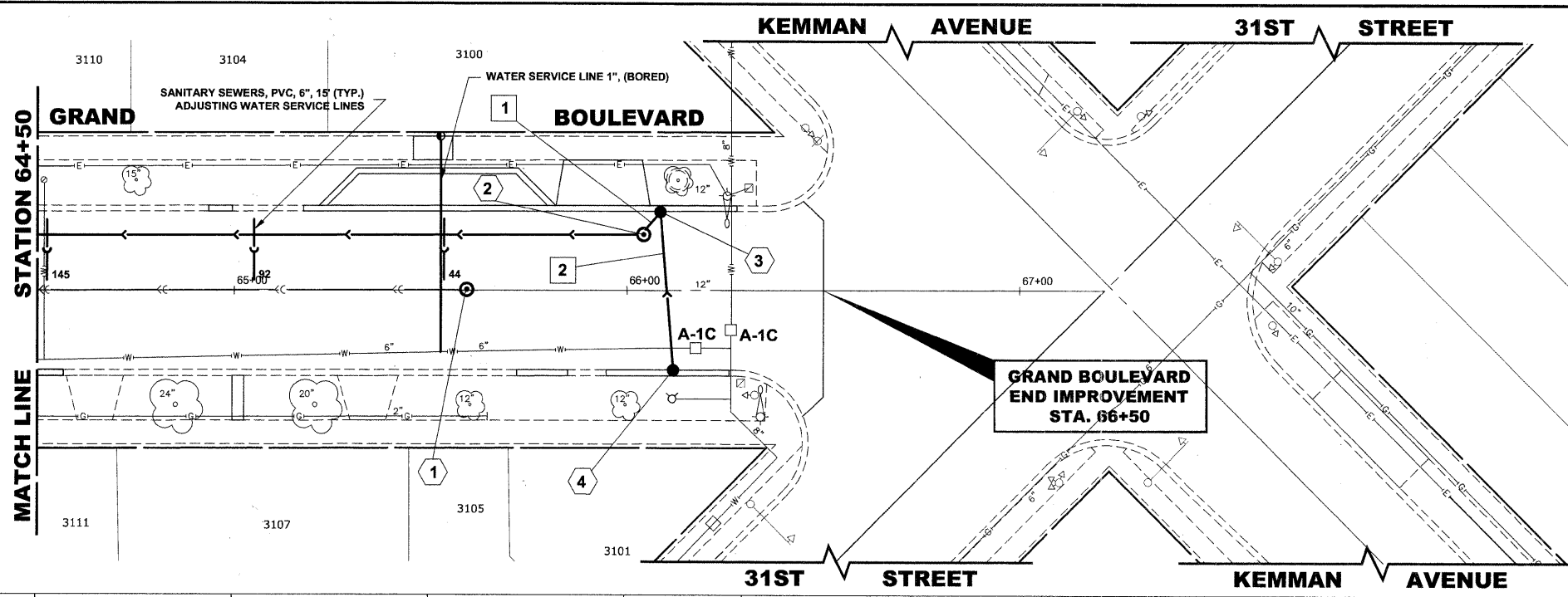


| STRUCTURE NO. | STATION | OFFSET | TYPE | RIM EL. | INVERT ELEVATION |
|---------------|---------|--------|---|---------|--|
| 1 | 65+59 | 0' LT | COMBINED SEWER MANHOLE, 4' DIA TYPE 1 FRAME, CLOSED LID | 623.55 | 616.80 (12" SE) |
| 2 | 66+00 | 14' LT | MANHOLES, TYPE A, 4' DIA TYPE 1 FRAME, CLOSED LID | 622.75 | 616.83 (18" SE) 618.57 (10" W) 618.58 (10" NE) |
| 3 | 66+08 | 20' LT | CATCH BASINS, TYPE A, 4' DIA, TYPE 1 FRAME, OPEN LID | 622.42 | 618.67 (10" E) |
| 4 | 66+11 | 20' RT | CATCH BASINS, TYPE A, 4' DIA, TYPE 1 FRAME, OPEN LID | 622.68 | 618.93 (10" S) |

EXISTING TOPOGRAPHY



| PIPE NO. | LENGTH | PAY ITEM | SLOPE | C.Y.T.B. |
|----------|--------|---------------------|-------|----------|
| 1 | 10 | STORM SEW CL B 2 10 | 1.00% | 0.8 |
| 2 | 35 | STORM SEW CL B 2 10 | 1.00% | 2.0 |

NOTE :
 FIGURES SHOWN AT THE END OF THE 6" SANITARY SEWER SERVICES INDICATE THE DISTANCE THE SERVICE IS FROM THE COMBINED SEWER MANHOLE.

PROPOSED IMPROVEMENTS

| STA | 65+00 | +50 | 66+00 | +30 | +73 | |
|-----|-------|-----|-------|-----|-----|-----|
| 622 | | | | | | 622 |
| 618 | | | | | | 618 |
| 614 | | | | | | 614 |
| 610 | | | | | | 610 |
| 606 | | | | | | 606 |



| | | |
|--------------|--------------------|-----------|
| USER NAME - | DESIGNED - WOP, JG | REVISED - |
| PLOT SCALE - | DRAWN - MK, DMM | REVISED - |
| PLOT DATE - | CHECKED - WOP, JG | REVISED - |
| | DATE - 10-24-11 | REVISED - |

**STATE OF ILLINOIS
 DEPARTMENT OF TRANSPORTATION**

**GRAND BOULEVARD
 UTILITY PLAN AND PROFILE**

SCALE: 1"=20'H, 1"=4'V. SHEET NO. 10 OF 10 SHEETS STA. 64+50 TO STA. 66+37

| | | | | |
|---|----------------|--------------|--------------|-----------|
| ROUTE NO. | SECTION | COUNTY | TOTAL SHEETS | SHEET NO. |
| FAU 1694 | 07-00122-01-PV | COOK | 86 | 43 |
| FIELD BOOK NO. | -AERIALS/ILL | CONTRACT NO. | 63651 | |
| FED. ROAD DIST. NO. 1 ILLINOIS FED. AID PROJECT M-9003(875) | | | | |

Drawing file: W:\Projects\12509232 - Grand Blvd. Design\Engineer\Grand Blvd\Grand Blvd.dwg Oct 24, 2011 - 4:45pm