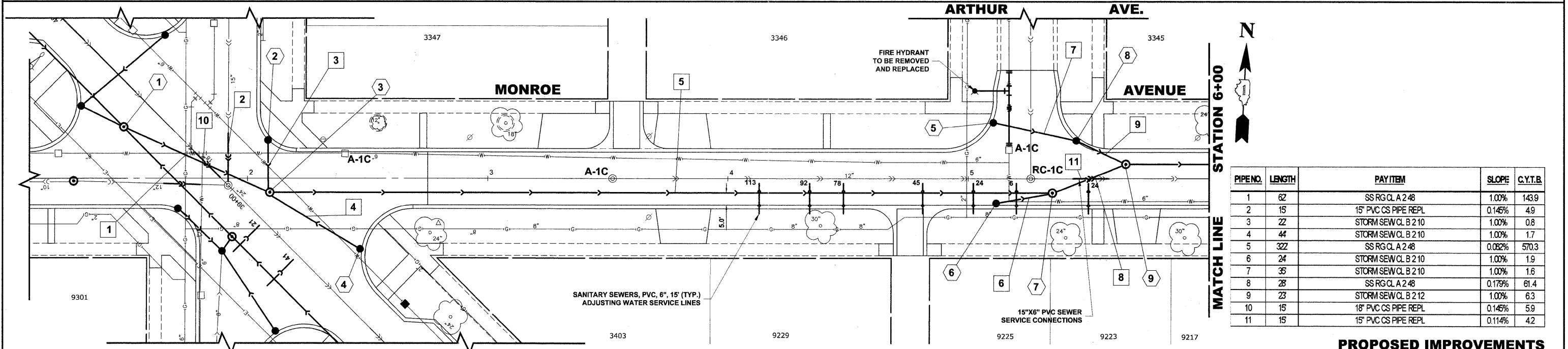


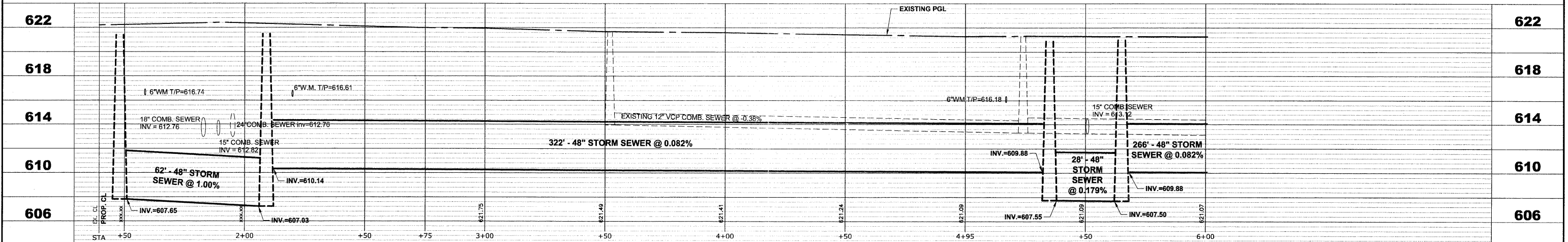
STRUCTURE NO.	STATION	OFFSET	TYPE	RM EL.	INVERT ELEVATION
1	1+48	21 LT	MANHOLES, TYPE A 6 DIA TYPE 1 FRAME, CLOSED LID	621.20	607.64 (48" E) 610.74 (42" NW) 612.48 (21" SE) 615.33 (12" WNW)
2	2+06	16 LT	CATCH BASINS, TYPE A 4 DIA, TYPE 1 FRAME, OPEN LID	620.95	617.20 (10" S)
3	2+06	6 RT	MANHOLES, TYPE A 6 DIA TYPE 1 FRAME, CLOSED LID	621.30	607.03 (48" NW) 610.14 (48" E) 616.66 (10" SE) 616.98 (10" N)
4	2+45	29 RT	CATCH BASINS, TYPE A 4 DIA, TYPE 1 FRAME, OPEN LID	621.05	617.30 (10" NW)
5	5+10	23 LT	CATCH BASINS, TYPE A 4 DIA, TYPE 1 FRAME, OPEN LID	620.45	616.55 (10" E)
6	5+12	10 RT	CATCH BASINS, TYPE A 4 DIA, TYPE 1 FRAME, OPEN LID	620.47	616.70 (10" ENE)
7	5+35	6 RT	MANHOLES, TYPE A 6 DIA TYPE 1 FRAME, CLOSED LID	620.70	607.55 (48" NE) 609.68 (48" W) 616.45 (10" WSW)
8	5+45	15 LT	CATCH BASINS, TYPE A 4 DIA, TYPE 1 FRAME, OPEN LID, SPECIAL	620.40	616.60 (10" WNW) 616.60 (12" SE)
9	5+65	6 LT	MANHOLES, TYPE A 6 DIA TYPE 1 FRAME, CLOSED LID	620.80	607.50 (48" SW) 609.68 (48" E) 616.37 (12" NW)

EXISTING TOPOGRAPHY



PIPE NO.	LENGTH	PAY ITEM	SLOPE	C.Y.T.B.
1	62	SS RG CL A 2 48	1.00%	143.9
2	15	15" PVC CS PIPE REPL	0.145%	4.9
3	22	STORM SEW CL B 2 10	1.00%	0.8
4	44	STORM SEW CL B 2 10	1.00%	1.7
5	322	SS RG CL A 2 48	0.082%	570.3
6	24	STORM SEW CL B 2 10	1.00%	1.9
7	35	STORM SEW CL B 2 10	1.00%	1.6
8	28	SS RG CL A 2 48	0.179%	61.4
9	23	STORM SEW CL B 2 12	1.00%	6.3
10	15	18" PVC CS PIPE REPL	0.145%	5.9
11	15	15" PVC CS PIPE REPL	0.114%	4.2

PROPOSED IMPROVEMENTS



<p>Civil Engineers Municipal Consultants Established 1911</p>	USER NAME -	DESIGNED - WOP, JG	REVISED -	STATE OF ILLINOIS DEPARTMENT OF TRANSPORTATION	MONROE AVENUE UTILITY PLAN AND PROFILE	ROUTE NO. -	SECTION -	COUNTY -	TOTAL SHEETS -	SHEET NO. -
	PLOT SCALE -	DRAWN - MK, DMM	REVISED -			FAU 1694	07-00122-01-PV	COOK	86	44
	PLOT DATE -	CHECKED - WOP, JG	REVISED -			FIELD BOOK NO. -	JAERIALS/LL	CONTRACT NO. -	63651	
		DATE - 10-24-11	REVISED -			FED. ROAD DIST. NO. 1	ILLINOIS	FED. AID PROJECT	M-9003(875)	
SCALE: 1"=20'H. 1"=4'V.						SHEET NO. 1 OF 8 SHEETS		STA. -		TO STA. 6+00
E.H.E. PROJECT NO. 125-09-23201										

Drawing file: W:\Projects\12509232 - Grand Blvd. Design\Engineer\Grand Blvd\Grand Blvd.dwg
 Oct. 24, 2011 - 4:52pm