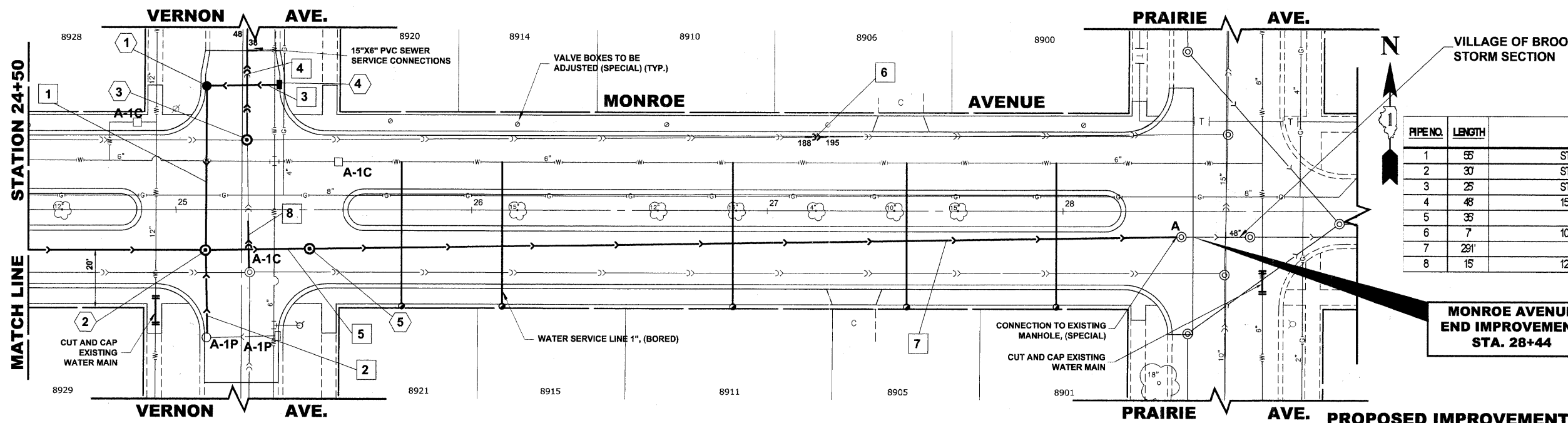


STRUCTURE NO.	STATION	OFFSET	TYPE	RIM EL.	INVERT ELEVATION
1	25+10	42' LT	CATCH BASINS, TYPE A, 4' DIA. TYPE 1 FRAME, OPEN LID	618.50	614.75 (10' E) 613.00 (12' S)
2	25+10	13' RT	MANHOLES, TYPE A 6' DIA TYPE 1 FRAME, CLOSED LID	618.80	605.95 (48' E) 608.30 (48' W) 612.45 (12' S) 614.13 (12' N)
3	25+23	23' LT	COMBINED SEWER MANHOLE, 4' DIA TYPE 1 FRAME, CLOSED LID	619.25	611.35 (15' N-S) 611.79 (12' E) 611.81 (12' W)
4	25+36	42' LT	INLETS, TYPE A TYPE 1 FRAME, OPEN LID	618.50	615.00 (10' W)
5	25+45	13' RT	MANHOLES, TYPE A 6' DIA TYPE 1 FRAME, CLOSED LID	618.75	608.30 (48' E) 605.60 (48' W)

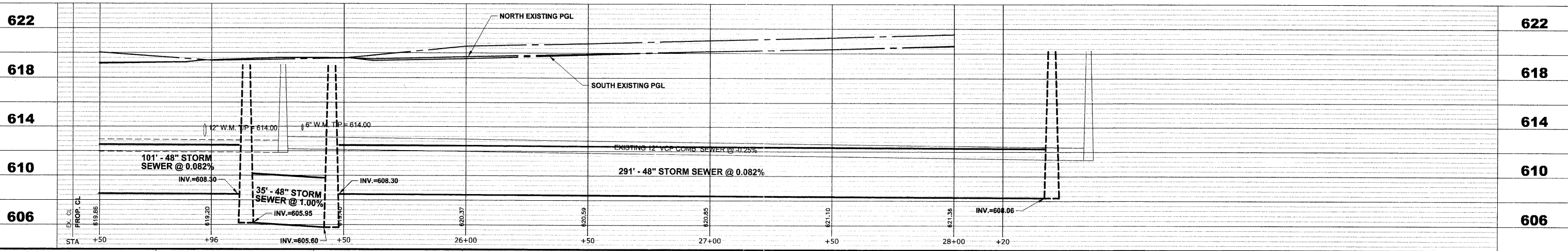
**MONROE AVENUE  
END IMPROVEMENT  
STA. 28+44**



VILLAGE OF BROOKFIELD  
STORM SECTION

PIPE NO.	LENGTH	PAY ITEM	SLOPE	C.Y.T.B
1	55'	STORM SEW CL B 2 12	1.00%	3.6
2	30'	STORM SEW CL B 2 12	1.00%	1.7
3	25'	STORM SEW CL B 2 10	1.00%	0.0
4	48'	15" PVC CS PIPE REPL	0.145%	11.6
5	35'	SS RG CL A 2 48	1.00%	75.2
6	7'	10" PVC CS PIPE REPL	0.194%	1.3
7	291'	SS RG CL A 2 48	0.082%	534.8
8	15'	12" PVC CS PIPE REPL	0.194%	3.0

**MONROE AVENUE  
END IMPROVEMENT  
STA. 28+44**



Drawing file: W:\Projects\12509232 - Grand Blvd. Design\_Engineer\Grand Blvd\Grand Blvd.dwg Oct. 26, 2011 - 11:36am

<p><b>HANCOCK ENGINEERING</b> Civil Engineers Municipal Consultants Established 1911</p>	USER NAME -	DESIGNED - WOP, JG	REVISED -	<b>STATE OF ILLINOIS DEPARTMENT OF TRANSPORTATION</b>	<b>MONROE AVENUE UTILITY PLAN AND PROFILE</b>	ROUTE NO.	SECTION	COUNTY	TOTAL SHEETS	SHEET NO.
	PLOT SCALE -	DRAWN - MK, DMM	REVISED -			FAU 1694	07-00122-01-PV	COOK	86	51
	PLOT DATE -	CHECKED - WOP, JG	REVISED -			FIELD BOOK NO. -AERIALS/ILL	CONTRACT NO. 63651			
		DATE - 10-24-11	REVISED -			FED. ROAD DIST. NO. 1 ILLINOIS	FED. AID PROJECT M-9003(875)			

SCALE: 1"=20'H, 1"=4'V. SHEET NO. 8 OF 8 SHEETS STA. 24+50 TO STA. 28+37

E.H.E. PROJECT NO. 125-09-23201