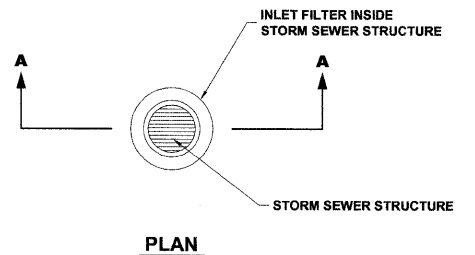
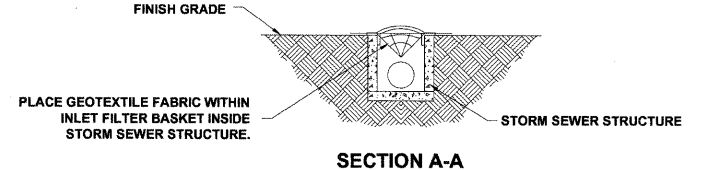


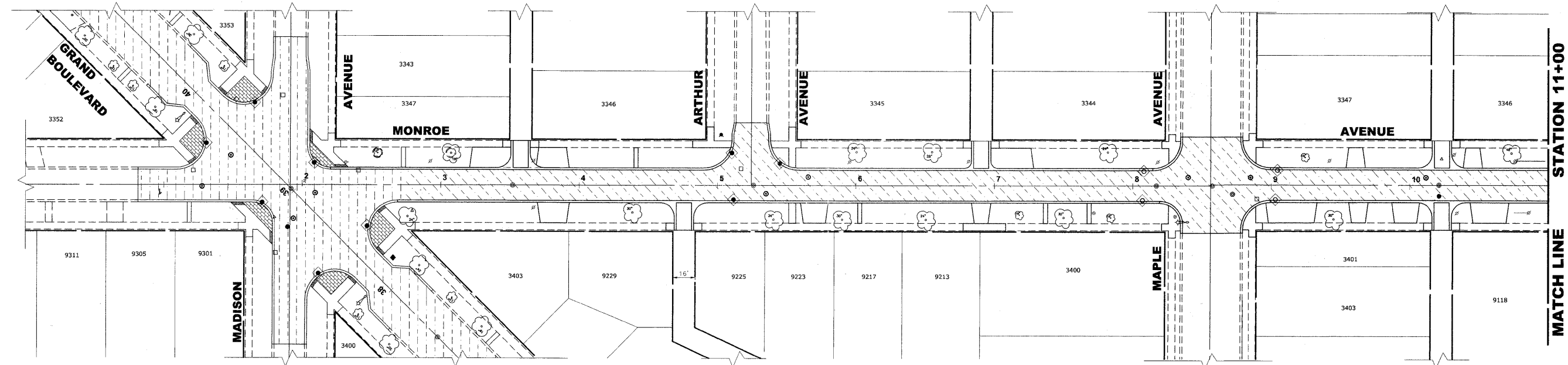
LEGEND

SYMBOL	DESCRIPTION
	INLET FILTER/SEDIMENT CONTROL, DRAINAGE STRUCTURE



EROSION CONTROL NOTES

1. SEE IDOT STANDARD 280001-06 FOR TEMPORARY EROSION CONTROL SYSTEMS.
2. THE CONTRACTOR SHALL ENSURE THAT ADJACENT PROPERTIES REMAIN PROTECTED FROM SEDIMENT DEPOSITION.
3. SOIL STOCKPILES SHALL BE PROTECTED WITH PERIMETER EROSION BARRIER OR OTHER EROSION PROTECTION SPECIFIED BY THE RESIDENT ENGINEER. THE COST SHALL BE INCLUDED IN THE UNIT PRICE FOR THE INDIVIDUAL SOIL MATERIALS.
4. WHEREVER CONSTRUCTION VEHICLE ACCESS ROUTES INTERSECT PAVED PUBLIC ROADS, PROVISIONS SHALL BE MADE TO MINIMIZE THE TRANSPORT OF SEDIMENT BY RUNOFF OR VEHICLE TRACKING ONTO THE PAVED SURFACE. THE PROVISIONS MAY INCLUDE SPRAYING VEHICLE WHEELS TO CLEAR SEDIMENT BEFORE EXITING THE CONSTRUCTION SITE OR OTHER MEASURES APPROVED BY THE ENGINEER.
5. THE CONTRACTOR SHALL UTILIZE A SPECIFIC CONCRETE WASH OUT AREA LOCATED AWAY FROM DRAINAGE STRUCTURES, AT A FREQUENCY OF NO MORE THEN 1 X PER 1000' LOCATION TO BE DETERMINED IN FIELD



Drawing file: W:\Projects\12509232 - Grand Blvd. Design\Engineering\Grand Blvd 40_Schedule.dwg Oct 24, 2011 - 1:53pm

HANCOCK ENGINEERING
 Civil Engineers
 Municipal Consultants
 Established 1911

9301 Riverside Road
 Wheeling, Illinois 60094-2790
 Phone: 708-465-0400
 Fax: 708-465-5122

USER NAME -	DESIGNED - WOP, JG	REVISED -
PLOT SCALE -	DRAWN - MK, DMM	REVISED -
PLOT DATE -	CHECKED - WOP, JG	REVISED -
	DATE - 10-24-11	REVISED -

**STATE OF ILLINOIS
 DEPARTMENT OF TRANSPORTATION**

EROSION CONTROL PLAN

SCALE: 1" = 40' SHEET NO. 3 OF 4 SHEETS STA. - TO STA. -

ROUTE NO.	SECTION	COUNTY	TOTAL SHEETS	SHEET NO.
FAU 1694	07-00122-01-PV	COOK	86	57
FIELD BOOK NO. -AERIALS/ILL		CONTRACT NO. 63651		
FED. ROAD DIST. NO. 1 ILLINOIS		FED. AID PROJECT M-9003(875)		

E.H.E. PROJECT NO. 125-09-23201