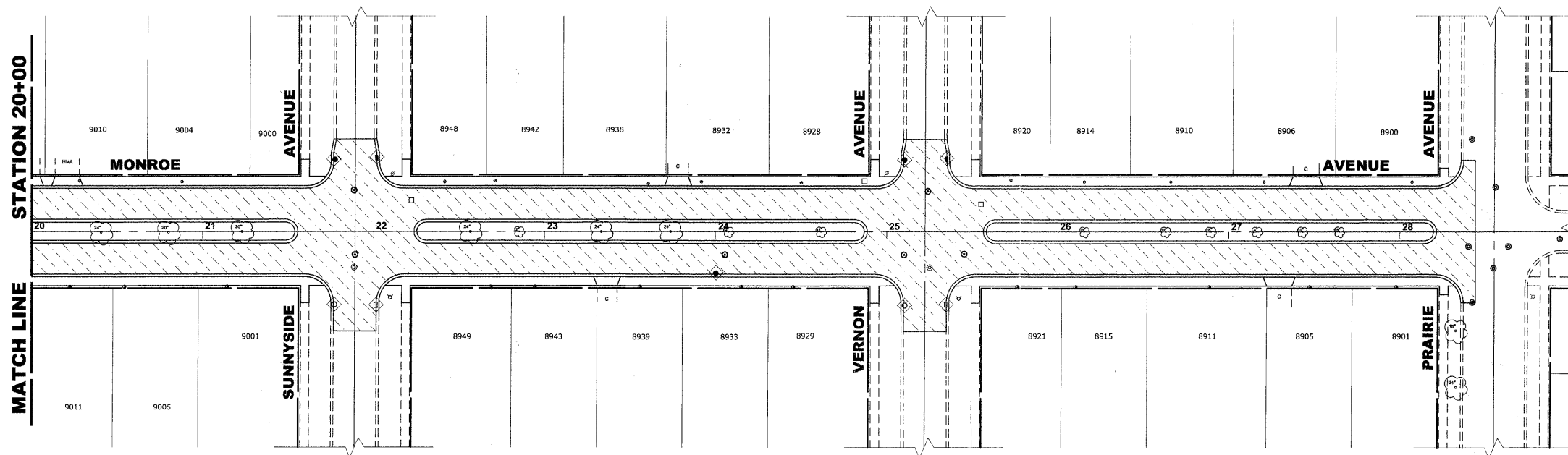
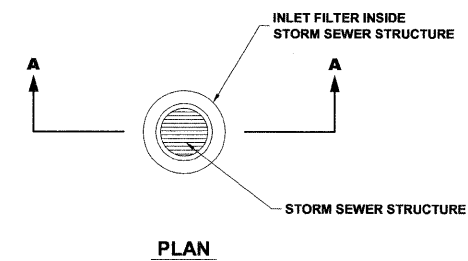
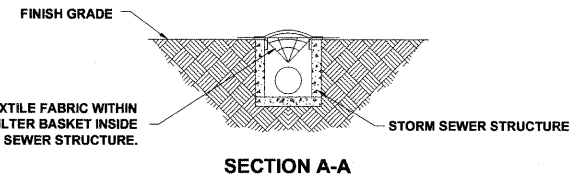


EROSION CONTROL NOTES

1. SEE IDOT STANDARD 280001-05 FOR TEMPORARY EROSION CONTROL SYSTEMS.
2. THE CONTRACTOR SHALL ENSURE THAT ADJACENT PROPERTIES REMAIN PROTECTED FROM SEDIMENT DEPOSITION.
3. SOIL STOCKPILES SHALL BE PROTECTED WITH PERIMETER EROSION BARRIER OR OTHER EROSION PROTECTION SPECIFIED BY THE RESIDENT ENGINEER. THE COST SHALL BE INCLUDED IN THE UNIT PRICE FOR THE INDIVIDUAL SOIL MATERIALS.
4. WHEREVER CONSTRUCTION VEHICLE ACCESS ROUTES INTERSECT PAVED PUBLIC ROADS, PROVISIONS SHALL BE MADE TO MINIMIZE THE TRANSPORT OF SEDIMENT BY RUNOFF OR VEHICLE TRACKING ONTO THE PAVED SURFACE. THE PROVISIONS MAY INCLUDE SPRAYING VEHICLE WHEELS TO CLEAR SEDIMENT BEFORE EXITING THE CONSTRUCTION SITE OR OTHER MEASURES APPROVED BY THE ENGINEER.
5. THE CONTRACTOR SHALL UTILIZE A SPECIFIC CONCRETE WASH OUT AREA LOCATED AWAY FROM DRAINAGE STRUCTURES, AT A FREQUENCY OF NO MORE THEN 1 X PER 1000' LOCATION TO BE DETERMINED IN FIELD

LEGEND

| SYMBOL | DESCRIPTION |
|--------|---|
| | INLET FILTER/SEDIMENT CONTROL, DRAINAGE STRUCTURE |



Drawing file: W:\Projects\12509232 - Grand Blvd. Design\Engineer\Grand Blvd 40_Scotte.dwg Oct. 24, 2011 1:53pm

HANCOCK ENGINEERING
 Civil Engineers
 Municipal Consultants
 Established 1911

| | | |
|--------------|--------------------|-----------|
| USER NAME - | DESIGNED - WOP, JG | REVISED - |
| PLOT SCALE - | DRAWN - MK, DMM | REVISED - |
| PLOT DATE - | CHECKED - WOP, JG | REVISED - |
| | DATE - 10-24-11 | REVISED - |

**STATE OF ILLINOIS
 DEPARTMENT OF TRANSPORTATION**

EROSION CONTROL PLAN

SCALE: 1" = 40' SHEET NO. 4 OF 4 SHEETS STA. - TO STA. -

| | | | | |
|---|----------------|--------------------|--------------|-----------|
| ROUTE NO. | SECTION | COUNTY | TOTAL SHEETS | SHEET NO. |
| FAU 1684 | 07-00122-01-PV | COOK | 86 | 58 |
| FIELD BOOK NO. -JAERIALS/ILL | | CONTRACT NO. 63651 | | |
| FED. ROAD DIST. NO. 1 ILLINOIS FED. AID PROJECT M-9003(875) | | | | |

E.H.E. PROJECT NO. 125-09-23201