

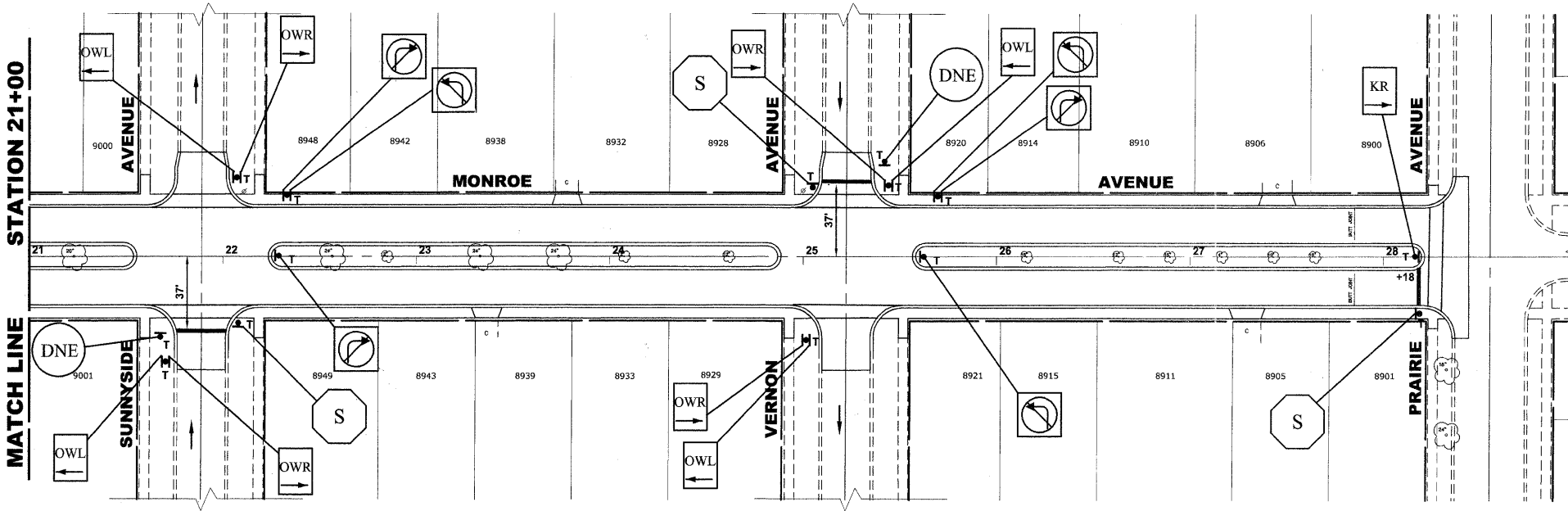
SIGNING NOTES

STREET NAME SIGNS AND POSTS ARE TO BE REMOVED BY CONTRACTOR AT THE BEGINNING OF CONSTRUCTION, SAFELY STORED BY THE CONTRACTOR AND REINSTALLED BY THE CONTRACTOR AT THE COMPLETION OF THE PROJECT (COST IS TO BE INCLUDED IN TRAFFIC CONTROL AND PROTECTION, SPECIAL)

**SIGNING PLAN
LEGEND OF SYMBOLS**

SYMBOL	DESCRIPTION
T	PROPOSED TRAFFIC SIGN (TELESCOPING STEEL SIGN SUPPORT)

NOTE: "2T" SHALL DENOTE TWO (2) TELESCOPING STEEL SIGN SUPPORTS, RESPECTIVELY.



PAVEMENT MARKINGS LEGENDS

ITEM DESCRIPTION	SYMBOL
THERMOPLASTIC PAVEMENT MARKING - LINE 4", PARKING LANE LINE, WHITE	A
THERMOPLASTIC PAVEMENT MARKING - LINE 4", NO PARKING AREA, YELLOW	B
THERMOPLASTIC PAVEMENT MARKING - LINE 4", PAVEMENT CENTERLINE SKIP DASH, YELLOW	C
THERMOPLASTIC PAVEMENT MARKING - LINE 6", CROSS WALK, WHITE	D
THERMOPLASTIC PAVEMENT MARKING - LINE 12", SCHOOL CROSSWALK, WHITE	E
THERMOPLASTIC PAVEMENT MARKING - LINE 24", STOP BAR, WHITE	F
THERMOPLASTIC PAVEMENT MARKING - LETTERS AND SYMBOLS, WHITE	G
THERMOPLASTIC PAVEMENT MARKING - LINE 6", TURN LANE MARKINGS, SKIP-DASH, WHITE	H
THERMOPLASTIC PAVEMENT MARKING - LINE 6", TURN LANE MARKINGS, SOLID LINE, WHITE	I
THERMOPLASTIC PAVEMENT MARKING - LINE 4", PAVEMENT CENTERLINE DOUBLE @ 11" C-C, YELLOW	J

Drawing file: W:\Projects\12509232 - Grand Blvd. Design_Engineering\Grand Blvd 40_Schedule.dwg Oct 26, 2011 11:40am

HANCOCK ENGINEERING
 Civil Engineers
 Municipal Consultants
 Established 1911

USER NAME -	DESIGNED - WOP, JG	REVISED -
PLOT SCALE -	DRAWN - MK, DMM	REVISED -
PLOT DATE -	CHECKED - WOP, JG	REVISED -
	DATE - 10-24-11	REVISED -

**STATE OF ILLINOIS
DEPARTMENT OF TRANSPORTATION**

**PAVEMENT MARKING AND
SIGNING PLAN**

SCALE: 1" = 40'
 SHEET NO. 4 OF 4 SHEETS STA. - TO STA. -

ROUTE NO. FAU 1694	SECTION 07-00122-01-PV	COUNTY COOK	TOTAL SHEETS 86	SHEET NO. 63
FIELD BOOK NO. -AERIALS/LL		CONTRACT NO. 63651		
FED. ROAD DIST. NO. 1 ILLINOIS		FED. AID PROJECT M-9003(875)		