

F.A.J. RTE.	SECTION	COUNTY	TOTAL SHEETS	SHEET NO.
2678/2676	11-00179-00-LS	DUPAGE	28	1
ILLINOIS		CONTRACT NO. 63652		

INDEX OF SHEETS

- 1 COVER SHEET AND INDEX OF SHEETS
- 2 GENERAL NOTES AND HIGHWAY STANDARDS
- 3 SUMMARY OF QUANTITIES
- 4-5 TYPICAL SECTIONS
- 6-11 EXISTING AND PROPOSED PLANS
- 12-14 LIGHTING PLANS
- 15 LIGHTING WIRING DIAGRAMS
- 16-17 LIGHTING DETAILS
- 18 BD-02 DRIVEWAY DETAILS DISTANCE BETWEEN ROW AND FACE OF CURB <= 15' (4.5m)
- 19 BD-07 DETAIL OF STORM SEWER CONNECTION TO EXISTING SEWER
- 20 BD-08 DETAILS FOR FRAMES AND LIDS ADJUSTMENT WITH MILLING
- 21 BD-22 PAVEMENT PATCHING FOR HMA SURFACED PAVEMENT
- 22 BD-32 BUTT JOINT AND HMA TAPER DETAILS
- 23 TC-10 TRAFFIC CONTROL AND PROTECTION FOR SIDE ROADS, INTERSECTIONS AND DRIVEWAYS
- 24 TC-13 DISTRICT ONE TYPICAL PAVEMENT MARKINGS
- 25 TC-16 PAVEMENT MARKING LETTERS AND SYMBOLS FOR TRAFFIC STAGING
- 26 TC-22 ARTERIAL ROAD INFORMATION SIGN
- 27 TC-26 DRIVEWAY ENTRANCE SIGNING
- 28 STREETScape DETAILS

STATE OF ILLINOIS DEPARTMENT OF TRANSPORTATION DIVISION OF HIGHWAYS

PLANS FOR PROPOSED FEDERAL AID HIGHWAY PROJECT

**FAU ROUTE 2678 (YORK STREET),
FAU ROUTE 2676 (ADDISON AVENUE), AND THIRD STREET
ROBERT PALMER DRIVE TO NORTH AVENUE,
FIRST STREET TO THIRD STREET,
AND ADDISON AVENUE TO MICHIGAN STREET
STREETScape ENHANCEMENTS**

**SECTION 11-00179-00-LS
PROJECT NO. TE-0001(880)
CITY OF ELMHURST
DUPAGE COUNTY
JOB NO. C-91-588-11**

FOR INDEX OF HIGHWAY STANDARDS, SEE SHEET NO. 2

TRAFFIC DATA:

ADT:
SOUTH YORK STREET 4,600 VPD (2008)
NORTH YORK STREET 15,400 VPD (2008)
ADDISON AVENUE 4,700 VPD (2008)
ROBERT PALMER DRIVE 15,400 (2008)

**YORK STREET, ADDISON AVENUE,
THIRD STREET, ROBERT PALMER DRIVE**

POSTED SPEED	DESIGN SPEED
25 MPH (EXISTING)	35 MPH (EXISTING)
25 MPH (PROPOSED)	35 MPH (PROPOSED)

NORTH AVENUE

POSTED SPEED	DESIGN SPEED
30 MPH (EXISTING)	35 MPH (EXISTING)
30 MPH (PROPOSED)	35 MPH (PROPOSED)

PROJECT IS LOCATED IN THE CITY OF ELMHURST

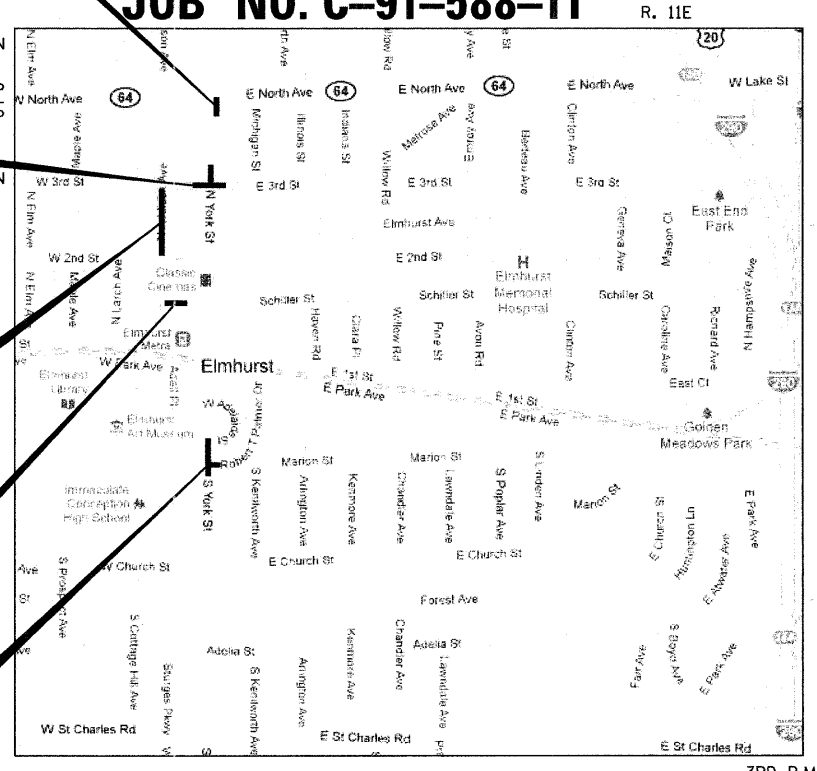
PROJECT IMPROVEMENTS
YORK ST/NORTH AVE
BEGIN STA 800+69.9
END STA 802+05.4

PROJECT IMPROVEMENTS
THIRD ST/YORK ST
BEGIN STA 500+31.4
END STA 501+82.5
BEGIN STA 600+24.5
END STA 602+15.6 &
BEGIN STA 700+36.3
END STA 702+22.7

PROJECT IMPROVEMENTS
ADDISON AVE
BEGIN STA 400+43.8
END STA 406+64.3

PROJECT IMPROVEMENTS
SCHILLER PEDESTRIAN ALLEY
BEGIN STA 300+22.9
END STA 302+24.3

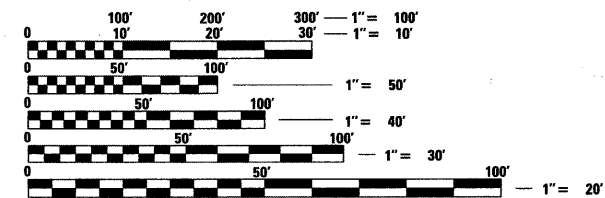
PROJECT IMPROVEMENTS
YORK ST /
ROBERT PALMER DR
BEGIN STA 200+69.3
END STA 204+13.2



LOCATION MAP

NOT TO SCALE

PROJECT LENGTH (GROSS /NET)
YORK STREET 671 FT (0.13 MILES)
SCHILLER PEDESTRIAN ALLEY 201 FT (0.04 MILES)
THIRD STREET 338 FT (0.06 MILES)
ADDISON AVENUE 621 FT (0.12 MILES)
GROSS AND NET LENGTH 1,831 FT (0.35 MILES)



FULL SIZE PLANS HAVE BEEN PREPARED USING STANDARD ENGINEERING SCALES. REDUCED SIZED PLANS WILL NOT CONFORM TO STANDARD SCALES. IN MAKING MEASUREMENTS ON REDUCED PLANS, THE ABOVE SCALES MAY BE USED.

J.U.L.I.E.
JOINT UTILITY LOCATION INFORMATION FOR EXCAVATION
1-800-892-0123
OR 811

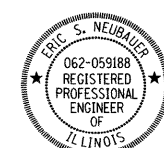
CONTRACT NO. 63652



LOCATION OF SECTION INDICATED THUS: -



Louis G. Beugnet
LOUIS G. BEUGNET, P.E.
NO. 062-050843
EXP. DATE 11/30/11
(SHEET NOS. 12 TO 17)



Eric Neubaier
ERIC S. NEUBAUER
NO. 062-059188
EXP. DATE 11/30/11
(REMAINING SHEETS)

**STATE OF ILLINOIS
DEPARTMENT OF TRANSPORTATION
DIVISION OF HIGHWAYS**

APPROVED ON OCTOBER 24, 2011
Wei Tiben
CITY OF ELMHURST, CITY ENGINEER

PASSED NOVEMBER 15, 2011
Chad Cramer
DISTRICT 1 ENGINEER OF LOCAL ROADS & STREETS

RELEASING FOR BID
BASED ON LIMITED
REVIEW NOVEMBER 16, 2011
Diane M. O'Keefe
DEPUTY DIRECTOR OF HIGHWAYS, REGION 1 ENGINEER

TranSystems
222 SOUTH RIVERSIDE PLAZA, SUITE 2320
CHICAGO, ILLINOIS 60606
(312) 669-9601

**PRINTED BY THE AUTHORITY
OF THE STATE OF ILLINOIS**

PROGRAM AND OFFICE ENGINEER: CHARLES F. RIDDLE, P.E. (847) 705-4406 SCHAUMBURG, IL