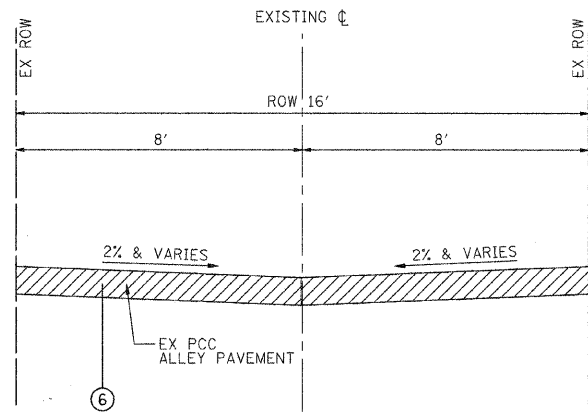
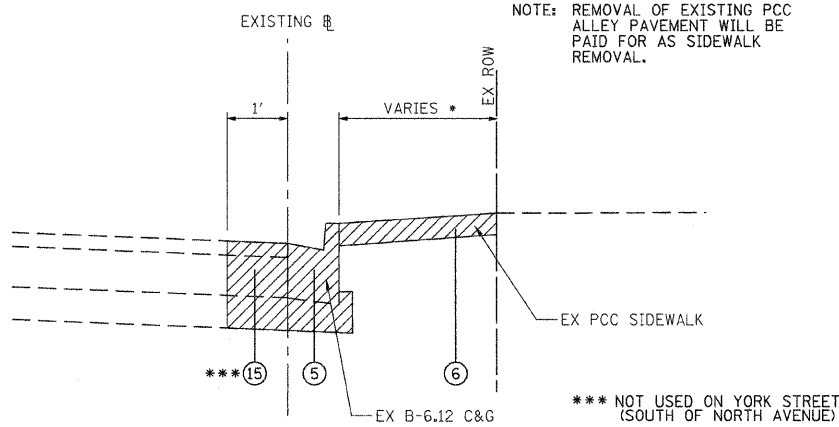


**LEGEND**

- ① EXISTING HOT-MIX ASPHALT PAVEMENT, VARIABLE DEPTH
- ② EXISTING PORTLAND CEMENT CONCRETE PAVEMENT, 6"
- ③ EXISTING SUBBASE GRANULAR MATERIAL, CA-6, 4"
- ④ EXISTING COMBINATION CURB & GUTTER (OF THE TYPE SPECIFIED)
- ⑤ COMBINATION CURB AND GUTTER REMOVAL (AS SHOWN ON PLANS AND AS DIRECTED BY ENGINEER) (SHALL INCLUDE REMOVAL AND DISPOSAL OF MATERIAL NECESSARY TO INSTALL PROPOSED SUB-BASE GRANULAR MATERIAL, TYPE B)
- ⑥ SIDEWALK REMOVAL (AS SHOWN ON THE PLANS AND AS DIRECTED BY THE ENGINEER)
- ⑦ SUBBASE GRANULAR MATERIAL, TYPE B 4"
- ⑧ CONCRETE PAVER PAVEMENT
- ⑨ SAND CUSHION, 1 1/2" (INCLUDED IN THE COST OF BRICK PAVER SIDEWALK)
- ⑩ BRICK PAVER SIDEWALK ("PREST" OR APPROVED EQUAL)
- ⑪ CONCRETE EDGING, SPECIFIED WIDTH
- ⑫ COMBINATION CONCRETE CURB AND GUTTER TYPE B-6.12 (AS SHOWN ON THE PLANS AND AS DIRECTED BY THE ENGINEER)
- ⑬ LIGHT POLE FOUNDATION NO CHAMFER, BEVELED CORNER FLUSH WITH PAVERS
- ⑭ HMA SURFACE COURSE, MIX "D", N70 (IL 9.5mm), 2"
- ⑮ PAVEMENT REMOVAL (FULL DEPTH)
- ⑯ TIE BARS, No. 5, 30" LONG, 30" O.C. (INCLUDED IN THE COST OF THE COMBINATION CONCRETE CURB AND GUTTER)

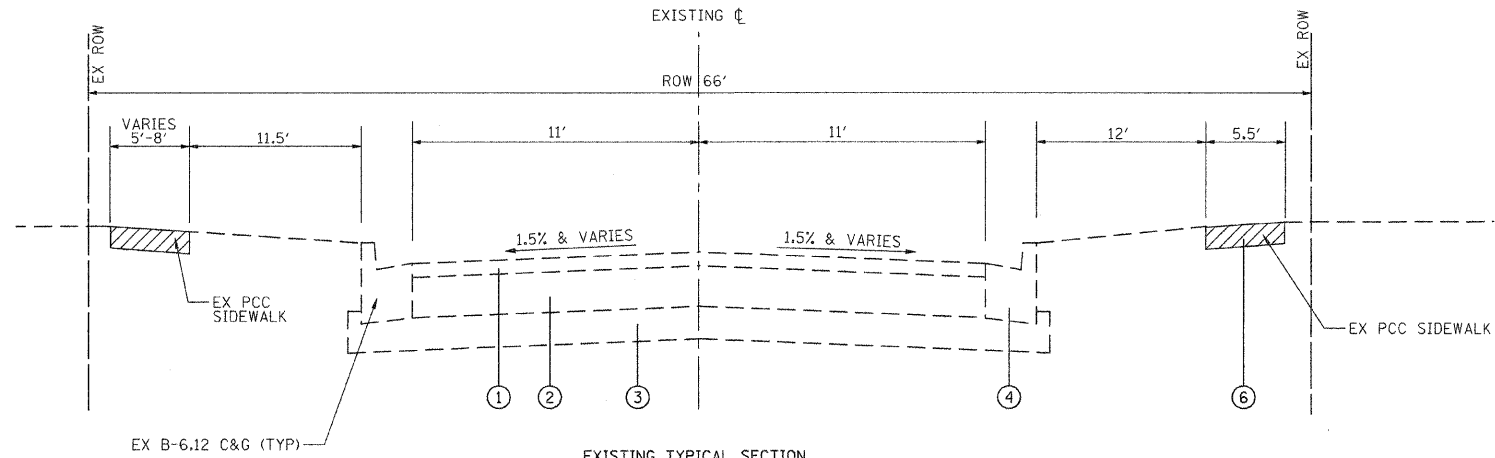


**EXISTING TYPICAL SECTION**  
SCHILLER PEDESTRIAN ALLEY (LOOKING EAST)  
(EAST-WEST ALLEY BETWEEN FIRST STREET AND SECOND STREET)  
(STA. 300+22.9 TO STA. 302+24.3)

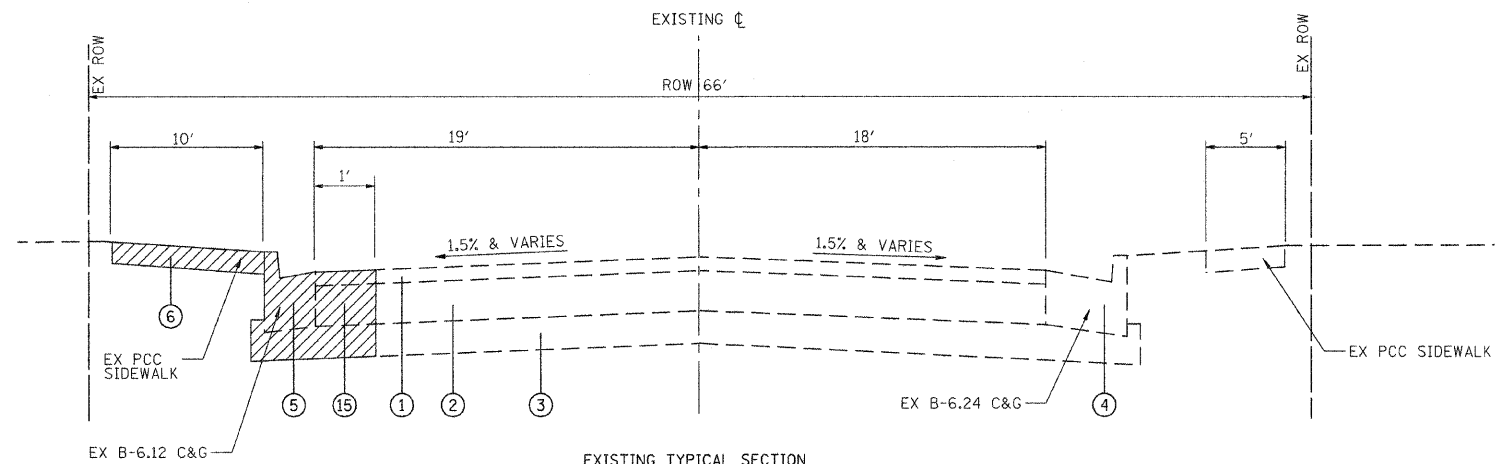


**EXISTING TYPICAL SECTION**  
TYPICAL SIDEWALK AND C&G (VARIOUS LOCATIONS)  
ADDISON AVENUE (BETWEEN SECOND STREET AND THIRD STREET) (STA. 400+43.8 TO STA. 406+64.3)  
THIRD STREET (WEST OF YORK STREET) (STA. 500+31.4 TO STA. 501+82.5)  
YORK STREET (NORTH TO THIRD STREET) (STA. 600+24.5 TO STA. 602+15.6)  
YORK STREET (SOUTH OF NORTH AVENUE) (STA. 800+69.9 TO STA. 802+05.4)

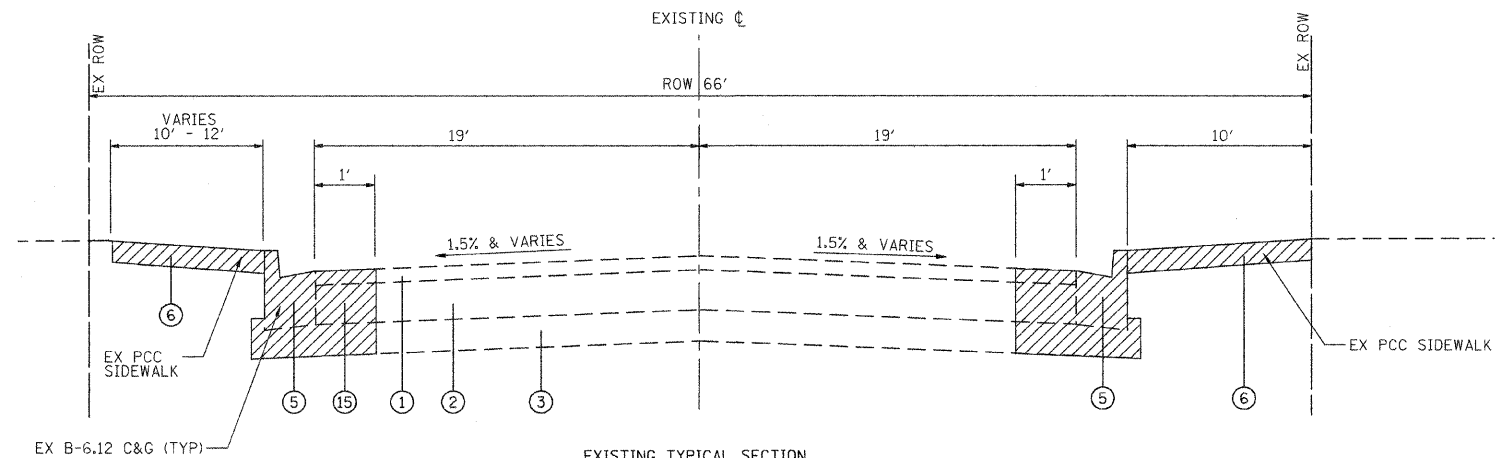
- \* SIDEWALK WIDTHS**
- 9.5' & VARIES - ADDISON AVENUE (BETWEEN SECOND STREET AND THIRD STREET)
  - 11' & VARIES - THIRD STREET (WEST OF YORK STREET)
  - 4' & VARIES - YORK STREET (NORTH OF THIRD STREET)
  - 7' & VARIES - YORK STREET (SOUTH OF NORTH AVENUE)



**EXISTING TYPICAL SECTION**  
THIRD STREET (LOOKING EAST)  
EAST OF YORK STREET TO NORTH-SOUTH ALLEY  
(STA. 700+36.3 TO STA. 702+22.7)



**EXISTING TYPICAL SECTION**  
YORK STREET (LOOKING NORTH)  
SOUTH OF ROBERT PALMER DRIVE  
(STA. 200+69.3 TO STA. 201+84.3)



**EXISTING TYPICAL SECTION**  
YORK STREET (LOOKING NORTH)  
ROBERT PALMER DRIVE TO VIRGINIA STREET  
(STA. 201+84.3 TO STA. 203.73.6)

FILE NAME =	USER NAME = a_jpondexter	DESIGNED - KB	REVISED -
D:\CD\11\0813\Road\Sheets\6-184-Typ Sects.SHT		DRAWN - AJP	REVISED -
		CHECKED - ESN	REVISED -
		DATE - 11/16/2011	REVISED -

**STATE OF ILLINOIS  
DEPARTMENT OF TRANSPORTATION**

**ELMHURST STREETSCAPE ENHANCEMENTS  
EXISTING TYPICAL SECTIONS**

SCALE: NOT TO SCALE SHEET NO. 1 OF 2 SHEETS STA. TO STA.

F.A.U. RTE.	SECTION	COUNTY	TOTAL SHEETS	SHEET NO.
2678/2676	11-00179-00-LS	DUPAGE	28	4
FED. ROAD DIST. NO. 7 ILLINOIS FED. AID PROJECT			CONTRACT NO. 63652	