

| ROUTE NO. | SECTION | COUNTY | TOTAL SHEETS | SHEET NO. |
|-----------|----------------|--------|--------------|-----------|
| FAU 1026 | 10-00116-00-SW | COOK | 40 | 1 |

ILLINOIS PROJECT M-TE-00D1(825)
CONTRACT NO. 63654



LOCATION OF SECTION INDICATED THIS:

INDEX OF SHEETS ON SHEET NO. 2

STATE OF ILLINOIS DEPARTMENT OF TRANSPORTATION DIVISION OF HIGHWAYS

PLANS FOR PROPOSED FEDERAL AID HIGHWAY FAU ROUTE 1026 (DIVISION STREET) 25th AVENUE TO 9th AVENUE SECTION NO. 10-00116-00-SW PROJECT M-TE-00D1(825) VILLAGE OF MELROSE PARK COOK COUNTY JOB NO. C-91-512-10

TRAFFIC DATA
ADT (2010) = 4,500
POSTED SPEED LIMIT = 30 MPH
DESIGN SPEED LIMIT = 35 MPH

DESIGN DESIGNATION
COLLECTOR

PROJECT LOCATED IN THE VILLAGE OF MELROSE PARK

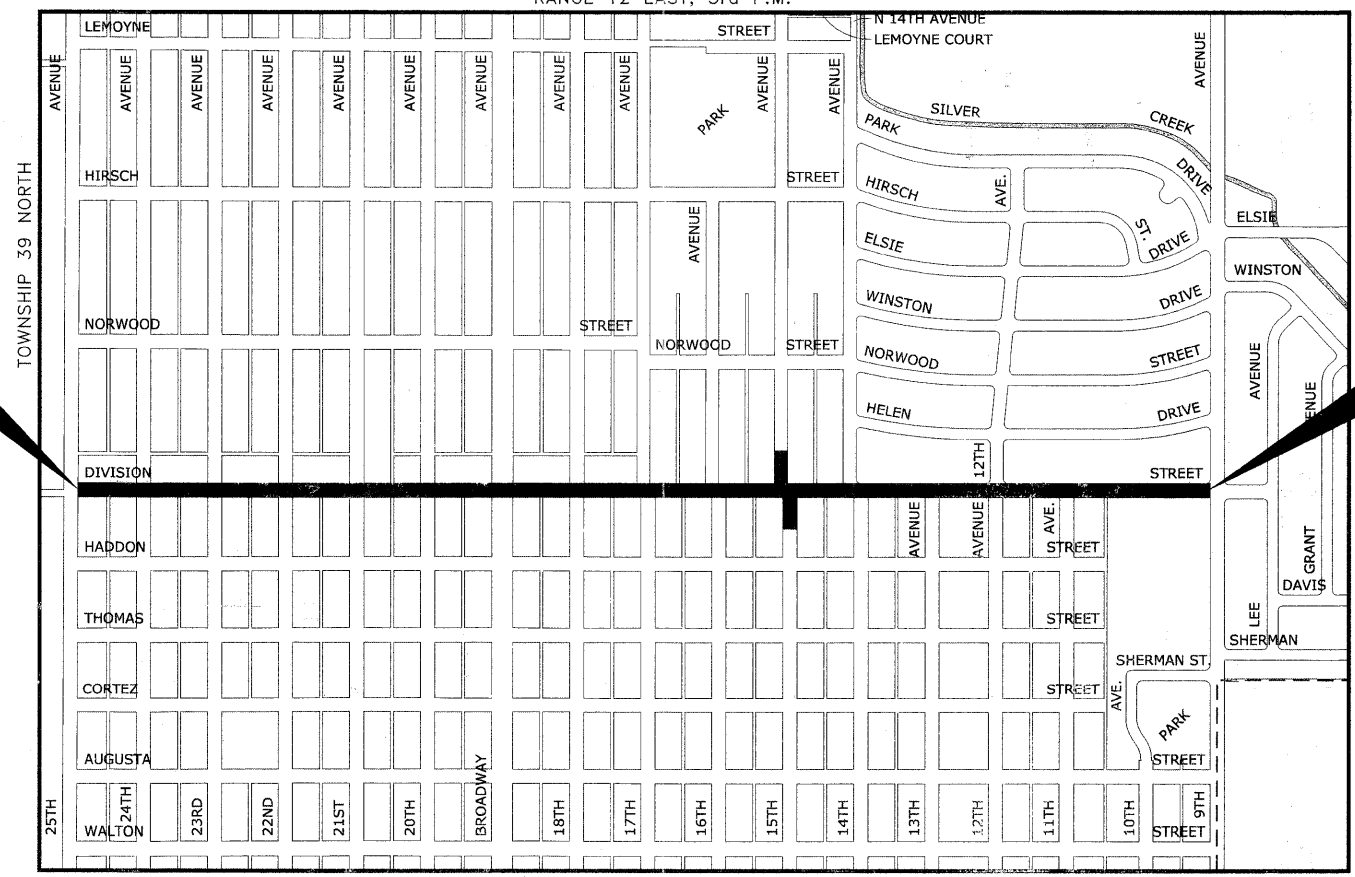


**Know what's below.
Call before you dig.**
OR
800-896-0123

PROJECT BEGINS
STATION 0+99
DIVISION STREET

PROJECT ENDS
STATION 53+76
DIVISION STREET

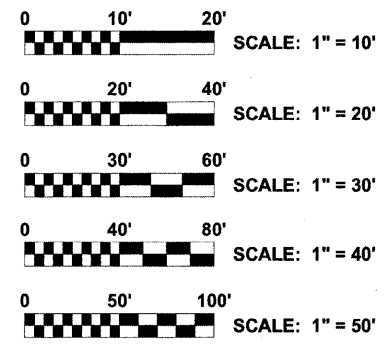
LOCATION MAP
RANGE 12 EAST, 3rd P.M.



AREA OF IMPROVEMENT

PROVISO TOWNSHIP
MAP SCALE : NONE

GROSS LENGTH OF IMPROVEMENT = 5,277 FT ≈ 1.00 MI.
NET LENGTH OF IMPROVEMENT = 5,277 FT ≈ 1.00 MI.



FULL SIZE PLANS HAVE BEEN PREPARED USING STANDARD ENGINEERING SCALES. REDUCED SIZED PLANS WILL NOT CONFORM TO STANDARD SCALES. IN MAKING MEASUREMENTS ON REDUCED PLANS, THE ABOVE SCALES MAY BE USED.

CONTRACT NO. 63654

| | |
|--|--|
| STATE OF ILLINOIS ILLINOIS DEPARTMENT OF TRANSPORTATION DIVISION OF HIGHWAYS | |
| APPROVED | NOVEMBER 21 2011 <i>Paul M. Anderson</i> VILLAGE OF MELROSE PARK, PRESIDENT |
| PASSED | NOVEMBER 17 2011 <i>Chris A. ...</i> DISTRICT ENGINEER OF LOCAL ROADS & STREETS |
| RELEASED FOR BID BASED ON LIMITED REVIEW | NOVEMBER 16, 2011 <i>Diana M. O'Neil</i> DEPUTY DIRECTOR OF HIGHWAYS, REGION 1 ENGINEER |



SIGNED: *Edwin L. Stoelting*
DATE: NOV. 2, 2011 LICENSE EXPIRES :11-30-11

EDWIN HANCOCK ENGINEERING COMPANY
9933 ROOSEVELT ROAD PHONE : (708) 865-0300
WESTCHESTER, ILLINOIS 60154

PROGRAM AND OFFICE ENGINEER: CHARLES F. RIDDLE, P.E. (847) 705-4406 SCHAUMBURG

Drawing file: W:\Projects\60011046 - Division Street IEP\Cover-DivisionStreet.dwg Nov 01, 2011 - 11:12am