

1-20-2012 LETTING ITEM 033

STATE OF ILLINOIS
DEPARTMENT OF TRANSPORTATION
DIVISION OF HIGHWAYS

F.A.U. RTE.	SECTION	COUNTY	TOTAL SHEETS	SHEET NO.
NA	10-00094-00-SW	LAKE	10	1
ILLINOIS CONTRACT NO.			63657	

PLANS FOR PROPOSED FEDERAL AID HIGHWAY

SAFE ROUTES TO SCHOOL
VARIOUS LOCATIONS WITHIN THE VILLAGE OF MUNDELEIN
SIDEWALK IMPROVEMENTS
SECTION 10-00094-00-SW
PROJECT SRTS-4009(037)
VILLAGE OF MUNDELEIN
LAKE COUNTY
C-40-008-10

FOR INDEX OF SHEETS, SEE SHEET NO. 2
FOR HIGHWAY STANDARDS, SEE SHEET NO. 2

TRAFFIC DATA

ADT:
VARIOUS ROUTES < 500

POSTED SPEED

30 MPH (EXISTING)
30 MPH (PROPOSED)

DESIGN SPEED

30 MPH (EXISTING)
30 MPH (PROPOSED)

DESIGN DESIGNATION

VARIOUS ROUTES - LOCAL ROADS AND STREETS

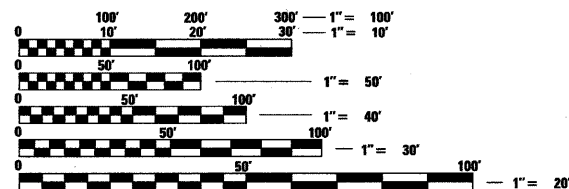


PROGRAM AND OFFICE ENGINEER: CHARLES F. RIDDLER, P.E. 847-705-4406 SCHAMBURG, IL

J.U.L.I.E.
JOINT
UTILITY
LOCATION
INFORMATION FOR
EXCAVATION
CALL 811

811

Know what's below.
Call before you dig.



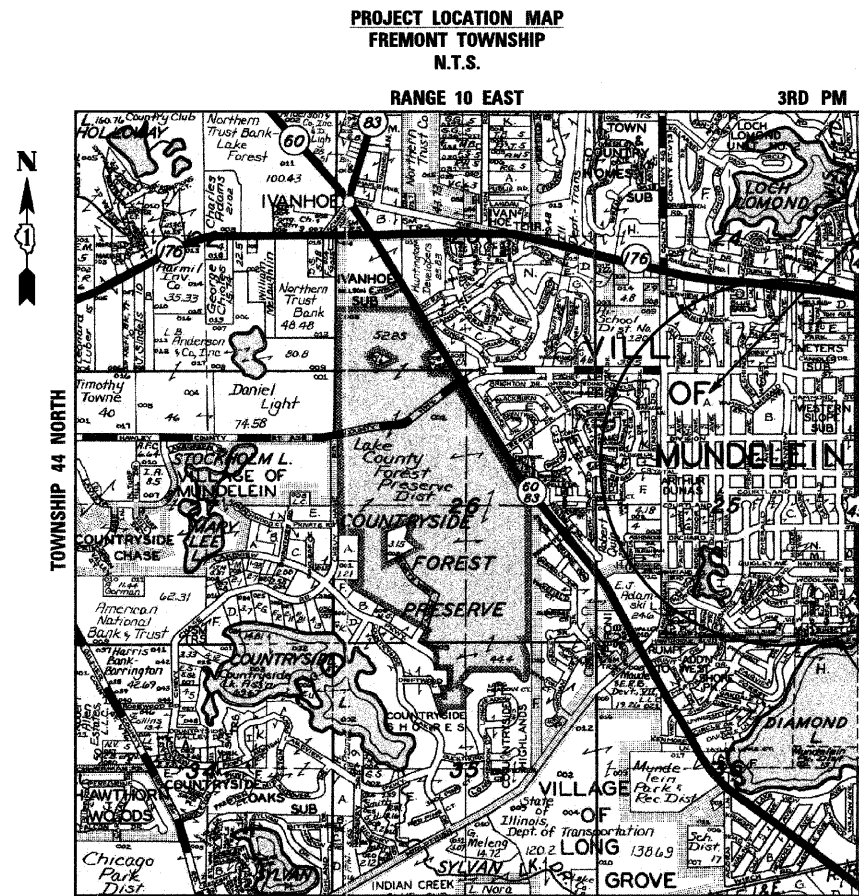
FULL SIZE PLANS HAVE BEEN PREPARED USING STANDARD
ENGINEERING SCALES. REDUCED SIZED PLANS WILL NOT
CONFORM TO STANDARD SCALES. IN MAKING MEASUREMENTS
ON REDUCED PLANS, THE ABOVE SCALES MAY BE USED.



420 NORTH FRONT STREET, SUITE 100 | McHENRY, ILLINOIS 60050
Phone: 815.385.1778 | Toll Free: 800.728.7805 | Fax: 815.385.1781 | HRGreen.com
ILLINOIS PROFESSIONAL DESIGN FIRM #184-001322

PROJECT ENGINEER: J. STRZALKA
PROJECT MANAGER: J. PISHA

CONTRACT NO. 63657



STATE OF ILLINOIS
DEPARTMENT OF TRANSPORTATION
DIVISION OF HIGHWAYS

APPROVED 10/19 20 11
Will Curran
VILLAGE OF MUNDELEIN

PASSED NOVEMBER 4 20 11
CHUCK CHRISTOPHER HOLT
DISTRICT ONE ENGINEER OF LOCAL ROADS AND STREETS

RELEASING FOR BID REVIEW NOVEMBER 4, 20 11
Diane M. O'Neil
DEPUTY DIRECTOR OF HIGHWAYS, REGION ONE ENGINEER

PROFESSIONAL ENGINEER'S SIGN & SEAL

J. Pisha

JEFFREY L. PISHA, P.E.
EXPIRES: 11-30-2013

SEAL

PRINTED BY THE AUTHORITY
OF THE STATE OF ILLINOIS

COMPANY NAME: HRGreen
PROJECT CONTACT: BILL EMERICH
VILLAGE OF MUNDELEIN
DATE PLOTTED: 10/26/2011 10:00:00 AM
PLOT DRIVER: MHP009-050-001011-AS-1501
PEN TABLE: STANDARD-TRANS.TBL

INDEX OF SHEETS

- 1 COVER SHEET
- 2 GENERAL NOTES, HIGHWAY STANDARDS AND BENCHMARKS
- 3 SUMMARY OF QUANTITIES
- 4 TYPICAL SECTIONS
- 5 SCHEDULE OF QUANTITIES
- 6-9 SIDEWALK PLANS
- 10 CONSTRUCTION DETAILS

HIGHWAY STANDARDS

- 000001-06 STANDARD SYMBOLS, ABBREVIATIONS AND PATTERNS
- 424001-06 PERPENDICULAR CURB RAMPS FOR SIDEWALKS
- 424006 DIAGONAL CURB RAMPS FOR SIDEWALKS
- 424011 CORNER PARALLEL CURB RAMPS FOR SIDEWALKS
- 424021 DEPRESSED CORNER FOR SIDEWALKS
- 606001-04 CONCRETE CURB TYPE B AND COMBINATION CONCRETE CURB AND GUTTER
- 701101-02 OFF-ROAD OPERATIONS, MULTILANE, 15' TO 24" FROM PAVEMENT EDGE
- 701801-05 LANE CLOSURE MULTILANE 1W OR 2W CROSSWALK OR SIDEWALK CLOSURE
- 701901-02 TRAFFIC CONTROL DEVICES

BENCHMARKS

- BM1: WEST SOUTHWEST BOLT ON TOP FLANGE OF HYDRANT LOCATED APPROXIMATELY 175 FEET SOUTHWEST OF THE CENTERLINE OF PERSHING AVENUE AND ON THE SOUTH SIDE OF ORCHARD STREET. ELEVATION=757.96 NAVD88
- BM2: RAILROAD SPIKE IN NORTHWEST FACE OF UTILITY POLE LOCATED AT THE SOUTHEAST CORNER AT THE INTERSECTION OF CALIFORNIA AVENUE AND COURTLAND STREET. ELEVATION=746.76 NAVD88
- BM3: EAST SOUTHEAST BOLT OF TOP FLANGE OF HYDRANT LOCATED APPROXIMATELY 365 FEET WEST OF THE CENTERLINE OF CALIFORNIA AVENUE AND ON THE NORTH SIDE OF COURTLAND STREET. ELEVATION=755.96 NAVD88

GENERAL NOTES

1. ALL REFERENCES TO "STANDARD SPECIFICATIONS" IN THESE GENERAL NOTES SHALL BE INTERPRETED TO MEAN "STANDARD SPECIFICATIONS FOR ROAD AND BRIDGE CONSTRUCTION" ADOPTED BY THE ILLINOIS DEPARTMENT OF TRANSPORTATION (IDOT), JANUARY 1, 2012.
2. ALL REFERENCES TO "ENGINEER" SHALL BE INTERPRETED TO MEAN THE RESIDENT ENGINEER.
3. PRIOR TO COMMENCEMENT OF CONSTRUCTION, THE CONTRACTOR SHALL VERIFY ALL DIMENSIONS AND CONDITIONS AFFECTING THEIR WORK WITH THE ACTUAL CONDITIONS AT THE JOB SITE. IN ADDITION, THE CONTRACTOR MUST VERIFY THE ENGINEER'S LINE AND GRADE STAKES. IF THERE ARE ANY DISCREPANCIES FROM WHAT IS SHOWN ON THE CONSTRUCTION PLANS, HE MUST IMMEDIATELY REPORT SAME TO THE ENGINEER BEFORE DOING ANY WORK, OTHERWISE THE CONTRACTOR ASSUMES FULL RESPONSIBILITY. IN THE EVENT OF DISAGREEMENT BETWEEN THE CONSTRUCTION PLANS, STANDARD SPECIFICATIONS AND/OR SPECIAL DETAILS, THE CONTRACTOR SHALL SECURE WRITTEN INSTRUCTIONS FROM THE ENGINEER PRIOR TO PROCEEDING WITH ANY PART OF THE WORK AFFECTED BY OMISSIONS OR DISCREPANCIES. FAILING TO SECURE SUCH INSTRUCTIONS, THE CONTRACTOR WILL BE CONSIDERED TO HAVE PROCEEDED AT HIS OWN RISK AND EXPENSE. IN THE EVENT OF ANY DOUBT OR QUESTION ARISING WITH RESPECT TO THE TRUE MEANING OF THE CONSTRUCTION PLANS OR SPECIFICATIONS, THE DECISION OF THE ENGINEER SHALL BE FINAL AND CONCLUSIVE.
4. IT IS THE CONTRACTOR'S RESPONSIBILITY TO ASCERTAIN EXISTING FIELD CONDITIONS PRIOR TO BIDDING ON THE PROJECT.
5. BEFORE STARTING ANY EXCAVATION, THE CONTRACTOR SHALL CALL "JULIE" (JOINT UTILITY LOCATION INFORMATION FOR EXCAVATION) AT 8-1-1 FOR FIELD LOCATIONS OF BURIED UTILITIES (48 HOURS NOTIFICATION IS REQUIRED).
6. THE CONTRACTOR WILL NOT BE ALLOWED TO SET UP A YARD OR FIELD OFFICE ON STATE OR VILLAGE PROPERTY WITHOUT WRITTEN PERMISSION FROM IDOT OR VILLAGE.
7. SAW CUTTING OF PAVEMENTS, SIDEWALK, ETC. SHALL BE TO FULL DEPTH AND SHALL RESULT IN A CLEAN STRAIGHT EDGE ON THE PORTION REMAINING. ALL SAW CUTTING SHALL BE CONSIDERED INCLUDED IN THE COST OF THE ITEM REMOVED.
8. THE CONTRACTOR SHALL PROTECT AND CAREFULLY PRESERVE ALL SECTION OR SUBSECTION MONUMENTS, PROPERTY CORNERS, AND REFERENCE MARKERS UNTIL THE OWNER, HIS AGENT, OR AN AUTHORIZED SURVEYOR HAS WITNESSED OR OTHERWISE REFERENCED THEIR LOCATIONS.
9. OFFSET LOCATIONS GIVEN IN THE PLANS FOR STRUCTURES, EDGE OF PAVEMENT, ETC. ARE FROM THE ROADWAY CENTERLINE.
10. THE INDISCRIMINATE USE OF FIRE HYDRANTS, EXISTING STREAMS, CREEKS, WETLANDS, OR PONDS IS STRICTLY PROHIBITED. THE CONTRACTOR SHALL PROVIDE A WATER TRUCK AND DRIVER AS REQUIRED TO OBTAIN AND TRANSPORT THIS WATER. THE CONTRACTOR SHALL BE RESPONSIBLE FOR OBTAINING WATER FROM AN APPROVED SOURCE. IF THIS WATER IS FROM A SOURCE OTHER THAN HIS YARD, WRITTEN APPROVAL FROM THE AGENCY HAVING JURISDICTION FOR THE SOURCE OF THE WATER MUST BE RECEIVED BY THE CONTRACTOR PRIOR TO USE OF THE WATER.
11. THE CONTRACTOR SHALL BE RESPONSIBLE FOR SWEEPING AND CLEANING STREETS OF ANY DEBRIS AND MATERIAL THAT HAS ACCUMULATED AS A RESULT OF THE CONSTRUCTION ACTIVITY. A MECHANICAL SWEEPER, MECHANICALLY DRIVEN AIR AND HANDWORK WITH SHOVEL AND BROOM SHALL BE UTILIZED TO PROVIDE A CLEAN STREET FOR THE MOTORING PUBLIC. WITHIN 24 HOURS OF PLACING PRIME COAT AND THE LAYING OF HMA, THE CONTRACTOR SHALL SWEEP THE PAVEMENT AND REMOVE STANDING WATER, EARTH, WEEDS, LEAVES, DIRT, CONSTRUCTION DEBRIS AND ALL LOOSE MATERIAL.
12. THE CONTRACTOR WILL BE REQUIRED TO TEMPORARILY RESET ALL SUCH SIGNS THAT INTERFERE WITH CONSTRUCTION OPERATIONS. ALL SUCH SIGNS MUST BE MAINTAINED STRAIGHT AND CLEAN FOR THE DURATION OF THE TEMPORARY SETTING AND MUST BE RE-ERECTED AT A TEMPORARY LOCATION IN A WORKMANLIKE MANNER AND BE VISIBLE TO THE TRAFFIC FOR WHICH IT IS INTENDED. THIS WORK WILL NOT BE PAID FOR SEPERATELY, BUT SHALL BE INCLUDED IN THE UNIT BID PRICES OF THE CONTRACT.
13. AT LOCATIONS OF COMBINATION CONCRETE CURB AND GUTTER REMOVAL AND REPLACEMENT, RESTORATION WILL NOT BE PAID FOR SEPERATELY IN ACCORDANCE WITH THE STANDARD DETAIL. SODDING, SALT TOLERANT (SPECIAL) WILL BE MEASURED FOR PAYMENT ONLY AT LOCATIONS WHERE SIDEWALK DID NOT PREVIOUSLY EXIST AND NEW SIDEWALK HAS BEEN PROPOSED.

BOXED ITEMS INDICATE WORK INCIDENTAL TO THE CONTRACT OR BY OTHERS.

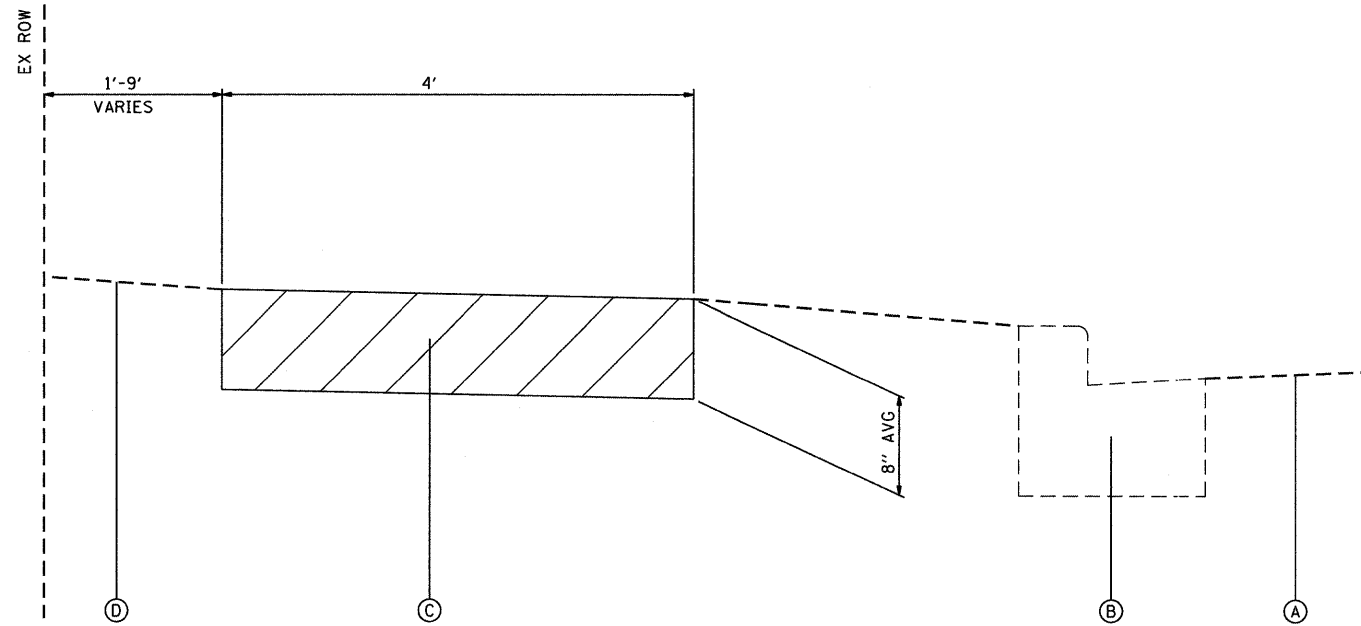
GENERAL NOTES (CONT.)

STORM SEWERS, WATER MAINS, AND UTILITIES

1. THE CONTRACTOR SHALL BE RESPONSIBLE FOR CONTACTING THE OWNERS OF ALL UTILITIES PRIOR TO CONSTRUCTION TO DETERMINE THE LOCATION OF ALL UTILITY EQUIPMENT. THE CONTRACTOR SHALL COOPERATE WITH ALL UTILITY OWNERS IN ACCORDANCE WITH THE STANDARD SPECIFICATIONS IF UTILITY RELOCATION, ADJUSTMENT, OR PROTECTION IS NECESSARY.
2. THE LOCATION OF EXISTING DRAINAGE STRUCTURES, STORM SEWERS, WATER MAINS, SANITARY SEWERS, AND ANY OTHER PUBLIC UTILITIES AS SHOWN ON THE PLANS IS APPROXIMATE AND THEIR EXACT LOCATION IS TO BE DETERMINED IN THE FIELD BY THE CONTRACTOR.
3. THE CONTRACTOR SHALL BE RESPONSIBLE FOR THE PROTECTION OF ALL UNDERGROUND AND SURFACE UTILITIES EVEN THOUGH THEY MIGHT NOT BE SHOWN ON THE PLANS. ANY UTILITY PROPERTY DAMAGED DURING CONSTRUCTION SHALL BE REPAIRED OR REPLACED TO THE SATISFACTION OF THE OWNER AT THE CONTRACTOR'S EXPENSE.
4. THE CONTRACTOR SHALL USE ALL NECESSARY PRECAUTIONS AND PROTECTION MEASURES REQUIRED TO MAINTAIN EXISTING UTILITIES, SEWERS, AND APPURTENANCES THAT MUST BE KEPT IN OPERATION.
5. THE CONTRACTOR SHALL ENSURE THAT ALL WATER SYSTEM VALVES, VALVE VAULTS, AND SANITARY SEWER MANHOLES REMAIN READILY ACCESSIBLE TO THE VILLAGE FOR EMERGENCY OPERATIONS. THE LOCATIONS OF ALL WATER AND SANITARY FACILITIES SHALL BE MARKED AND READILY VISIBLE AT ALL TIMES.

SUMMARY OF QUANTITIES

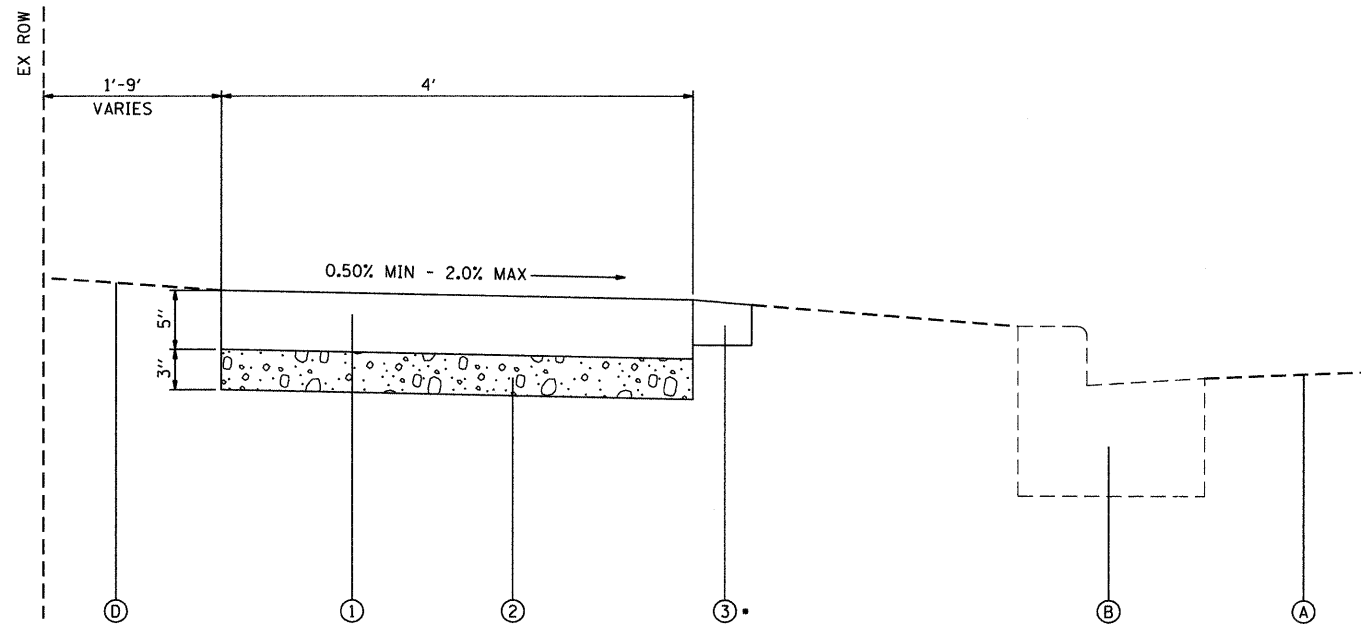
SPECIALTY ITEMS (Δ)	SPECIAL PROVISION (*)	PAY ITEM NUMBER	PAY ITEM DESCRIPTION	UNITS	TOTAL QUANTITY	SIDEWALKS 100% FEDERAL 0021
Δ	*	20101200	TREE ROOT PRUNING	EACH	10	10
		20201200	REMOVAL AND DISPOSAL OF UNSUITABLE MATERIAL	CU YD	88	88
	*	42400800	DETECTABLE WARNINGS	SQ FT	648	648
		44000600	SIDEWALK REMOVAL	SQ FT	16,131	16,131
		67100100	MOBILIZATION	L SUM	1	1
		70102640	TRAFFIC CONTROL AND PROTECTION, STANDARD 701801	L SUM	1	1
	*	Z0004562	COMBINATION CONCRETE CURB AND GUTTER REMOVAL AND REPLACEMENT	FOOT	361	361
	*	Z0017400	DRAINAGE & UTILITY STRUCTURES TO BE ADJUSTED	EACH	5	5
Δ	*	X2520650	SODDING, SALT TOLERANT (SPECIAL)	SQ YD	4,482	4,482
	*	X4240430	PORTLAND CEMENT CONCRETE SIDEWALK 5 INCH, SPECIAL	SQ FT	19,276	19,276



EXISTING TYPICAL SECTION

EXISTING LEGEND

- (A) EXISTING HOT-MIX ASPHALT PAVEMENT; 4"±
- (B) EXISTING CONCRETE CURB AND GUTTER
- (C) REMOVAL AND DISPOSAL OF UNSUITABLE MATERIAL
- (D) EXISTING GROUND



PROPOSED TYPICAL SECTION

PROPOSED LEGEND

- (1) PORTLAND CEMENT CONCRETE SIDEWALK 5 INCH, SPECIAL
- (2) SUB-BASE GRANULAR MATERIAL, TYPE B, 3 INCH (INCLUDED IN THE COST OF PORTLAND CEMENT CONCRETE SIDEWALK 5 INCH, SPECIAL)
- (3) SODDING, SALT TOLERANT (SPECIAL)

*NOTE: SODDING, SALT TOLERANT (SPECIAL) WILL BE MEASURED FOR PAYMENT ONLY AT LOCATIONS WHERE SIDEWALK DID NOT PREVIOUSLY EXIST AND NEW SIDEWALK IS PROPOSED.

RESTORATION, WITH TOPSOIL 4 INCH AND SEEDING CLASS 2A, AT LOCATIONS OF SIDEWALK REMOVAL AND REPLACEMENT WILL NOT BE MEASURED FOR PAYMENT BUT INCLUDED IN THE COST OF PORTLAND CEMENT CONCRETE SIDEWALK 5 INCH, SPECIAL.



USER NAME = JStuzel	DESIGNED - JJS	REVISED -
PLOT SCALE = N.T.S.	DRAWN - JJS	REVISED -
PLOT DATE = 10/13/2011	CHECKED - JLP	REVISED -
	DATE -	REVISED -

VILLAGE OF MUNDELEIN

**SAFE ROUTES TO SCHOOL
TYPICAL SECTIONS**

SCALE: N.T.S. SHEET NO. 1 OF 1 SHEETS STA. TO STA.

F.A.J. RTE.	SECTION	COUNTY	TOTAL SHEETS	SHEET NO.
NA	10-00094-00-SW	LAKE	10	4
CONTRACT NO.			63657	
ILLINOIS FED. AID PROJECT				

SCHEDULE OF QUANTITIES

SIDEWALK REMOVAL

STREET NAME	LENGTH (FT)	AREA (SQ FT)
CALIFORNIA AVE	6	60
PERSHING AVE	821	3,370
FARINA COURT	90	370
WINSTEAD PLACE	100	420
ALEXANDRIA COURT	50	220
HILLSIDE DRIVE	490	2,050
LAKEVIEW DRIVE	77	355
BALMORAL DRIVE	154	636
NORTH SHORE DRIVE	520	2,080
CARDINAL COURT	395	1,595
QUIGLEY STREET	364	1,539
WOODLAWN DRIVE	130	520
ORCHARD STREET	75	300
COURTLAND STREET	593	2,616
TOTALS	3,865	16,131

PORTLAND CEMENT CONCRETE SIDEWALK 5 INCH, SPECIAL (REMOVAL & REPLACEMENT LOCATIONS)

STREET NAME	LENGTH (FT)	AREA (SQ FT)
CALIFORNIA AVE	6	60
PERSHING AVE	821	3,370
FARINA COURT	90	370
WINSTEAD PLACE	100	420
ALEXANDRIA COURT	50	220
HILLSIDE DRIVE	490	2,050
LAKEVIEW DRIVE	77	355
BALMORAL DRIVE	154	636
NORTH SHORE DRIVE	520	2,080
CARDINAL COURT	395	1,595
QUIGLEY STREET	364	1,539
WOODLAWN DRIVE	130	520
ORCHARD STREET	75	300
COURTLAND STREET	593	2,616
TOTALS	3,865	16,131

PORTLAND CEMENT CONCRETE SIDEWALK 5 INCH, SPECIAL (NEW SIDEWALK LOCATIONS)

STREET NAME	LENGTH (FT)	AREA (SQ FT)
PERSHING AND ORCHARD	325	1,296
ORCHARD AND CALIFORNIA	83	330
CALIFORNIA AND COURTLAND	13	167
CALIFORNIA AND COURTLAND	8	34
CALIFORNIA AND COURTLAND	195	803
CALIFORNIA AND COURTLAND	10	92
HILLSIDE AND FARNIA	8	48
COURTLAND AND TALL GRASS	2	12
COURTLAND AND RIDGEMOOR	13	65
COURTLAND AND RIDGEMOOR	13	65
COURTLAND AND IDELVILD	12	60
COURTLAND AND PERSHING	8	48
ORCHARD AND MICHAEL	11	50
ORCHARD STREET	15	75
TOTALS	716	3,145

COMBINATION CONCRETE CURB & GUTTER REMOVAL & REPLACEMENT

STREET NAME	LENGTH (FT)
PERSHING AVE	10
WINSTEAD PLACE	15
HILLSIDE DRIVE	12
QUIGLEY STREET	42
COURTLAND STREET	282
TOTALS	361

DETECTABLE WARNINGS

STREET NAME	AREA (SQ FT)
CALIFORNIA AVE	32
PERSHING AVE	120
FARINA COURT	16
WINSTEAD PLACE	32
ALEXANDRIA COURT	32
HILLSIDE DRIVE	48
LAKEVIEW DRIVE	24
BALMORAL DRIVE	32
CARDINAL COURT	8
QUIGLEY STREET	88
COURTLAND STREET	216
TOTALS	648



HRGreen.com
 Illinois Professional Design Firm
 # 194-001322
 USER NAME = JStzsl
 PLOT SCALE = N.T.S.
 PLOT DATE = 10/13/2011

DESIGNED - JJS
 DRAWN - JJS
 CHECKED - JLP
 DATE -

REVISED -
 REVISED -
 REVISED -
 REVISED -

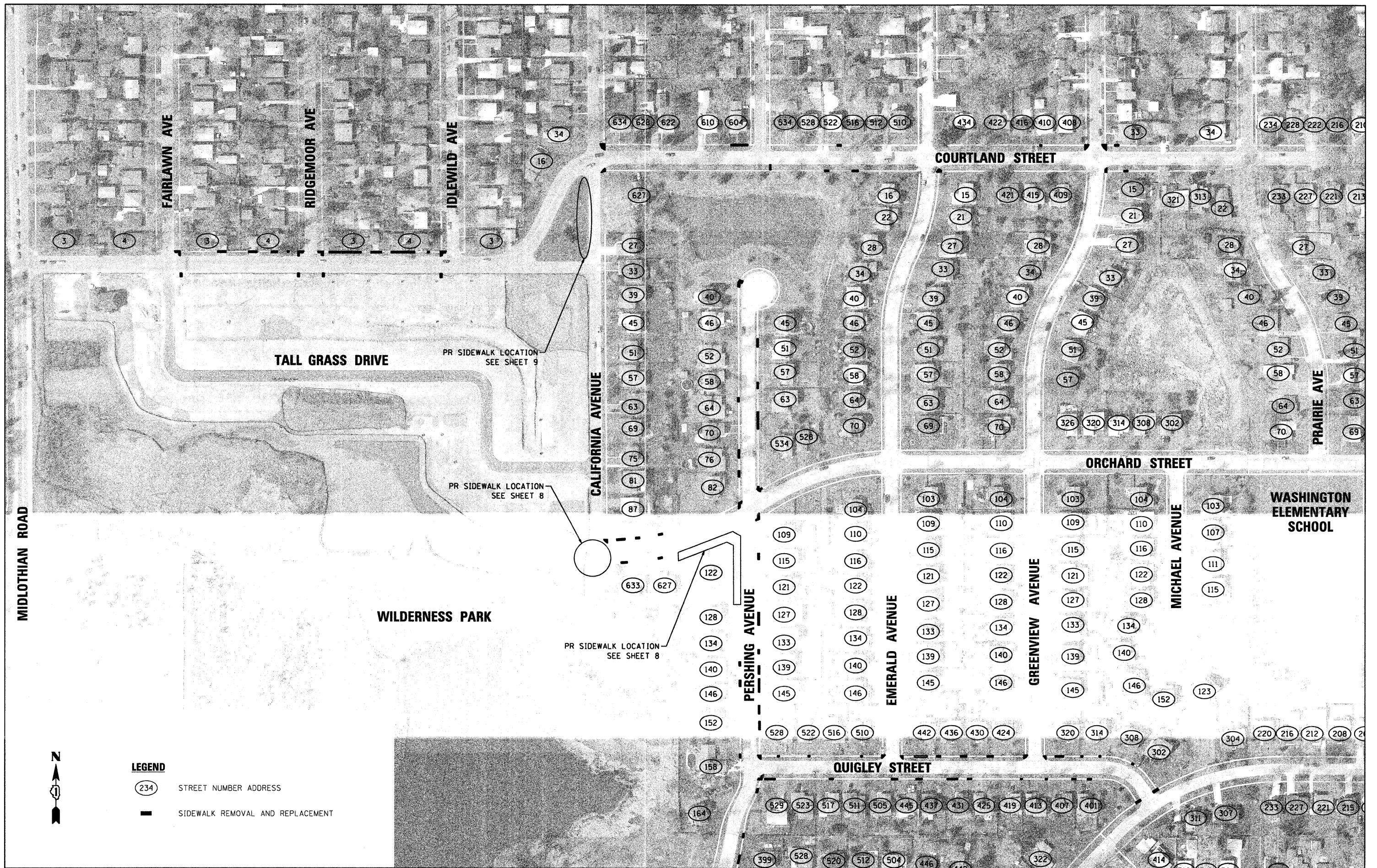
VILLAGE OF MUNDELEIN

SAFE ROUTES TO SCHOOL SCHEDULE OF QUANTITIES

SCALE: N.T.S. SHEET NO. 1 OF 1 SHEETS STA. TO STA.

F.A.J. RTE.	SECTION	COUNTY	TOTAL SHEETS	SHEET NO.
NA	10-00094-00-SW	LAKE	10	5
CONTRACT NO.			63657	

ILLINOIS FED. AID PROJECT



LEGEND

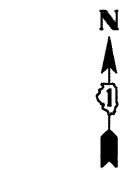
(234) STREET NUMBER ADDRESS

— SIDEWALK REMOVAL AND REPLACEMENT

PR SIDEWALK LOCATION
SEE SHEET 8

PR SIDEWALK LOCATION
SEE SHEET 8

PR SIDEWALK LOCATION
SEE SHEET 9



	USER NAME = JStrzel DESIGNED - JJS DRAWN - JJS CHECKED - JLP DATE -	REVISED - REVISED - REVISED - REVISED -	VILLAGE OF MUNDELEIN	SAFE ROUTES TO SCHOOL SIDEWALK REMOVAL AND REPLACEMENT PLAN				F.A.U. RTE. NA	SECTION 10-00094-00-SW	COUNTY LAKE	TOTAL SHEETS 10	SHEET NO. 6
	PLOT SCALE = 1"=100' PLOT DATE = 10/13/2011	SCALE: 1"=100' SHEET NO. 1 OF 2 SHEETS STA. TO STA.		CONTRACT NO. 63657 <small>ILLINOIS FED. AID PROJECT</small>								



LEGEND

- 234 STREET NUMBER ADDRESS
- SIDEWALK REMOVAL AND REPLACEMENT



USER NAME = JSrzel
 PLOT SCALE = 1"=100'
 PLOT DATE = 10/13/2011

DESIGNED - JJS
 DRAWN - JJS
 CHECKED - JLP
 DATE -

REVISED -
 REVISED -
 REVISED -
 REVISED -

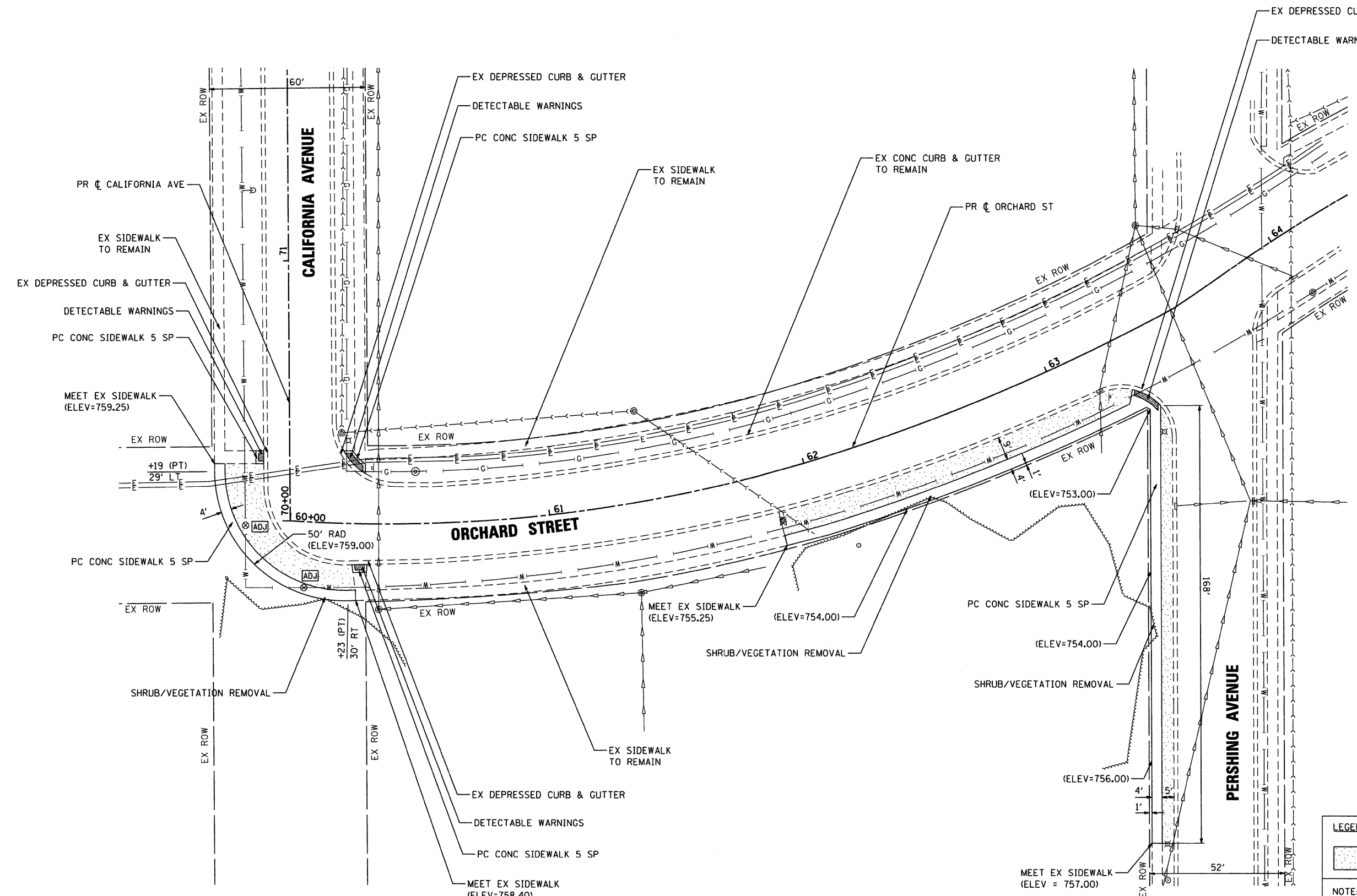
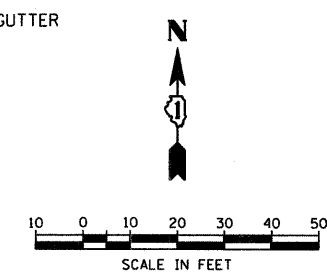
VILLAGE OF MUNDELEIN

**SAFE ROUTES TO SCHOOL
 SIDEWALK REMOVAL AND REPLACEMENT PLAN**

SCALE: 1"=100' SHEET NO. 2 OF 2 SHEETS STA. TO STA.

F.A.U. RTE.	SECTION	COUNTY	TOTAL SHEETS	SHEET NO.
NA	10-00094-00-SW	LAKE	10	7
CONTRACT NO.			63657	

ILLINOIS FED. AID PROJECT

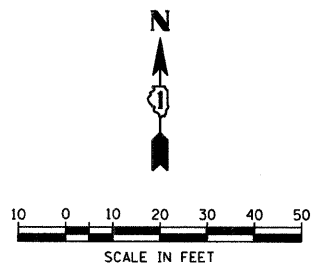
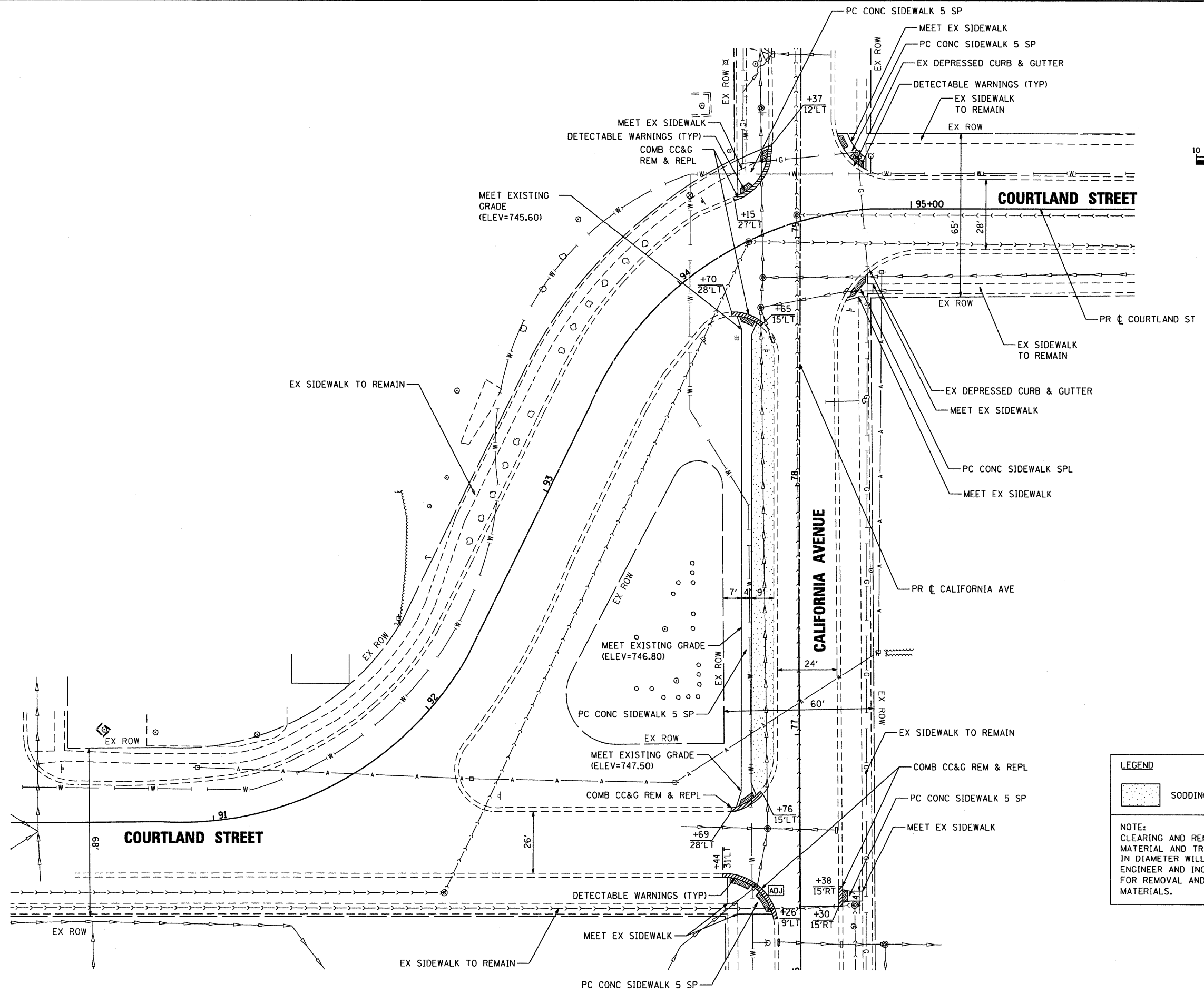


LEGEND

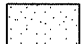
SODDING, SALT TOLERANT (SPECIAL)

NOTE:
 CLEARING AND REMOVAL OF EXISTING PLANT MATERIAL AND TREES LESS THAN 6 INCHES IN DIAMETER WILL BE MARKED BY THE ENGINEER AND INCLUDED IN THE UNIT COST FOR REMOVAL AND DISPOSAL OF UNSUITABLE MATERIALS.

	USER NAME = JSrzel PLOT SCALE = 1"=20' PLOT DATE = 10/13/2011	DESIGNED - JJS DRAWN - JJS CHECKED - JLP DATE -	REVISED - REVISED - REVISED - REVISED -	VILLAGE OF MUNDELEIN	SAFE ROUTES TO SCHOOL PROPOSED SIDEWALK PLAN			F.A.J. RTE. NA SECTION 10-00094-00-SW COUNTY LAKE TOTAL SHEETS 10 SHEET NO. 8
	SCALE: 1"=20' SHEET NO. 1 OF 2 SHEETS STA. TO STA.				CONTRACT NO. 63657 ILLINOIS FED. AID PROJECT			



LEGEND

 SODDING, SALT TOLERANT (SPECIAL)

NOTE:
 CLEARING AND REMOVAL OF EXISTING PLANT MATERIAL AND TREES LESS THAN 6 INCHES IN DIAMETER WILL BE MARKED BY THE ENGINEER AND INCLUDED IN THE UNIT COST FOR REMOVAL AND DISPOSAL OF UNSUITABLE MATERIALS.

 HRGreen.com Illinois Professional Design Firm # 194-01322	USER NAME = JSrzel	DESIGNED - JJS	REVISED -	VILLAGE OF MUNDELEIN	SAFE ROUTES TO SCHOOL PROPOSED SIDEWALK PLAN		F.A.U. RTE. NA	SECTION 10-00094-00-SW	COUNTY LAKE	TOTAL SHEETS 10	SHEET NO. 9	
	PLOT SCALE = 1"=100'	CHECKED - JLP	REVISED -		SCALE: 1"=100'	SHEET NO. 2 OF 2 SHEETS	STA. TO STA.	CONTRACT NO. 63657				
	PLOT DATE = 10/13/2011	DATE -	REVISED -			ILLINOIS FED. AID PROJECT						

VARIABLE - TO MEET EXISTING DIMENSIONS AND FIELD CONDITIONS (SEE NOTE ②)

PROP. CONC. CURB OR CURB AND GUTTER REPLACEMENT IN ACCORDANCE WITH STATE STANDARD 606001. (SEE NOTE ②)

SAW CUT FULL DEPTH - INCLUDED IN THE COST OF SIDEWALK, DRIVEWAY OR MEDIAN SURFACE REMOVAL PAY ITEM.

SEE STATE STANDARD 606001
EXISTING OR PROPOSED HMA SURFACE (IF APPLICABLE)

18" (450) MAX.

1/4" (5) **

EXISTING SIDEWALK, DRIVEWAY, MEDIAN SURFACE, SOD OR GROUND.

PROPOSED SIDEWALK, DRIVEWAY PAVEMENT, MEDIAN SURFACE OR SODDING SALT TOLERANT WITH TOP SOIL, 4" (100) SOD RESTORATION (SEE NOTE ①).

EXISTING CONCRETE PAVEMENT, CONCRETE BASE COURSE OR FLEXIBLE PAVEMENT

3" (75) MIN.

SUITABLE BACKFILL MATERIAL (INCLUDED IN THE COST OF CURB OR CURB AND GUTTER REMOVAL AND REPLACEMENT)

PROPOSED 3/4" (20) PREFORMED EXPANSION JOINT AT CONCRETE SIDEWALKS, DRIVEWAYS, AND MEDIANS. (INCLUDED IN THE COST OF CURB OR CURB AND GUTTER REMOVAL AND REPLACEMENT.)

* 3" (75) MINIMUM FROM TOP AND BOTTOM OF THE CONCRETE PAVEMENT OR BASE COURSE.

** IF THE FINAL SURFACE OF THE PAVEMENT IS CONCRETE, THE GUTTER IS TO BE FLUSH WITH THE PAVEMENT.

NOTE: ① SIDEWALK, DRIVEWAY PAVEMENT OR MEDIAN SURFACE SHALL BE SIMILAR TO THE MATERIAL BEING REMOVED AND WILL BE PAID FOR SEPARATELY.

SODDING, SALT TOLERANT AND TOP SOIL, FURNISH AND PLACE 4" WILL BE PAID FOR SEPARATELY,

② FERTILIZER FOR THE PLACEMENT OF THE SOD IS NOT REQUIRED

③ CURB OR CURB AND GUTTER REPLACEMENT SHALL MATCH THE SHAPE OF THE EXISTING CURB OR CURB AND GUTTER UNLESS OTHERWISE SPECIFIED.

④ FOR CURB OR CURB AND GUTTER REMOVAL AND REPLACEMENT ADJACENT TO FLEXIBLE PAVEMENT DELETE EPOXY COATED TIE BARS.

⑤ LONGITUDINAL BARS, IF ENCOUNTERED IN THE EXISTING CURB OR CURB AND GUTTER, ARE NOT TO BE REPLACED. CUTTING AND REMOVING LONGITUDINAL BARS SHALL BE INCLUDED IN THE COST OF CURB OR CURB AND GUTTER REMOVAL AND REPLACEMENT.

⑥ THE COST OF HMA SURFACE REMOVAL IN THE EXISTING GUTTER FLAG SHALL BE INCLUDED IN THE COST OF THE CURB AND GUTTER REMOVAL AND REPLACEMENT.

⑦ THE REMOVAL AND REPLACEMENT OF THE EXISTING CURB OR CURB AND GUTTER SHALL BE DONE IN ACCORDANCE WITH THE APPLICABLE PORTIONS OF SECTION 440 AND 606 OF THE STANDARD SPECIFICATIONS.

⑧ THE LOCATIONS OF REMOVAL AND REPLACEMENT OF EXISTING CURB OR CURB AND GUTTER SHALL BE DETERMINED BY THE RESIDENT ENGINEER AT THE TIME OF CONSTRUCTION.

UNSUITABLE SUB-BASE MATERIAL TO BE REMOVED, IF DIRECTED BY THE ENGINEER, SHALL BE REPLACED WITH EITHER SUB-BASE GRANULAR MATERIAL, TYPE B OR ADDITIONAL THICKNESS OF CONCRETE.

REMOVAL AND REPLACEMENT 4" (100) OR LESS IS INCLUDED IN THE COST OF CURB OR CURB AND GUTTER REMOVAL AND REPLACEMENT.

REMOVAL AND REPLACEMENT IN EXCESS OF 4" (100) WILL BE PAID FOR IN ACCORDANCE WITH ARTICLE 109.04 OF THE STANDARD SPECIFICATIONS.

PROPOSED #6 (20) EPOXY COATED TIE BARS 24" (600) LONG AT 24" (600) CENTERS WILL NOT BE PAID FOR SEPARATELY. DELETE EPOXY COATED TIE BARS IF EXISTING TIE BARS ARE USUABLE AS DETERMINED BY THE ENGINEER. (SEE NOTE ③).

BASIS OF PAYMENT:

THIS WORK WILL BE PAID FOR AT THE CONTRACT UNIT PRICE PER FOOT (METER) FOR "CURB REMOVAL AND REPLACEMENT" OR "COMBINATION CONCRETE CURB AND GUTTER REMOVAL AND REPLACEMENT".

CURB OR CURB AND GUTTER REMOVAL AND REPLACEMENT

ALL DIMENSIONS ARE IN INCHES (MILLIMETERS) UNLESS OTHERWISE SHOWN.

 HRGreen.com Illinois Professional Design Firm #184-001322	USER NAME = JStzsl	DESIGNED - A. HOUSEH	REVISED - R. SHAH 10-03-96	VILLAGE OF MUNDELEIN	CURB OR CURB AND GUTTER REMOVAL AND REPLACEMENT			F.A.U. RTE.	SECTION	COUNTY	TOTAL SHEETS	SHEET NO.
	PLOT SCALE =	DRAWN -	REVISED - A. ABBAS 03-21-97		SCALE: NONE	SHEET NO. 1 OF 1 SHEETS	STA. NA	TO STA. NA	NA	10-00094-00-SW	LAKE	10
PLOT DATE = 10/13/2011	CHECKED -	DATE - 03-11-94	REVISED - M. GOMEZ 01-22-01					CONTRACT NO. 63657		(ILLINOIS) FED. AID PROJECT		
	REVISED - R. BORO 12-15-09											